

Article

# Identification of an IGF2BP2-Targeted Peptide for Near-Infrared Imaging of Esophageal Squamous Cell Carcinoma

Wenbin Shu <sup>1,†</sup>, Yitai Xiao <sup>2,†</sup>, Lizhu Wang <sup>3,†</sup>, Mingzhu Liang <sup>3</sup>, Zhihong Li <sup>4</sup>, Xiangwen Wu <sup>1,\*</sup> and Qingdong Cao <sup>1,\*</sup>

<sup>1</sup> Department of Cardiothoracic Surgery, The Fifth Affiliated Hospital of Sun Yat-Sen University, Zhuhai 519000, China

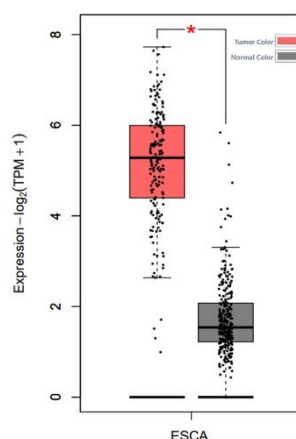
<sup>2</sup> Guangdong Provincial Key Laboratory of Biomedical Imaging and Guangdong Provincial Engineering Research Center of Molecular Imaging, The Fifth Affiliated Hospital of Sun Yat-Sen University, Zhuhai 519000, China

<sup>3</sup> Department of Radiology, The Fifth Affiliated Hospital of Sun Yat-Sen University, Zhuhai 519000, China

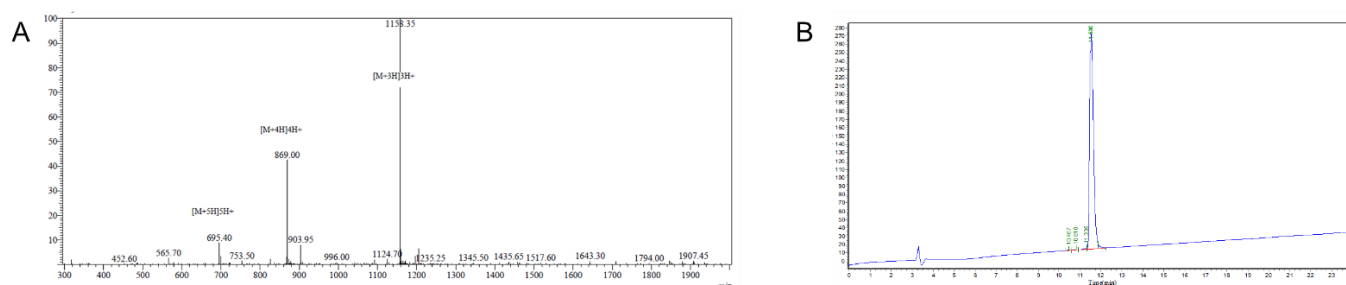
<sup>4</sup> School of Medicine, South China University of Technology, Guangzhou 510006, China

\* Correspondence: wuxw29@mail.sysu.edu.cn (X.W.); caoqd@mail.sysu.edu.cn (Q.C.)

† These authors contributed equally to this work.



**Figure S1.** *IGF2BP2* expression profile in tumor tissues and normal tissues (TPM: transcript per million).



**Figure S2.** The characteristic of P12 peptide. (A) Mass spectrometry profile of P12 peptide. (B) The stability of P12 peptide analyzed by analytical HPLC.