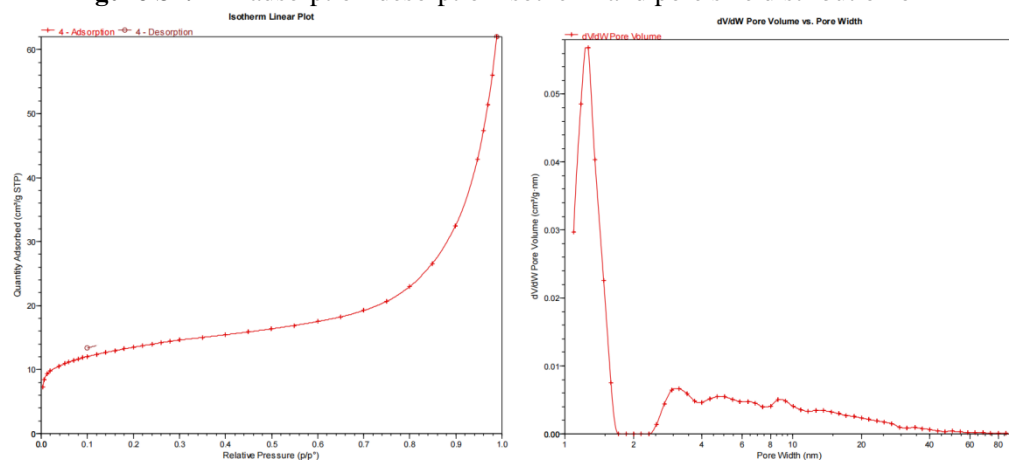
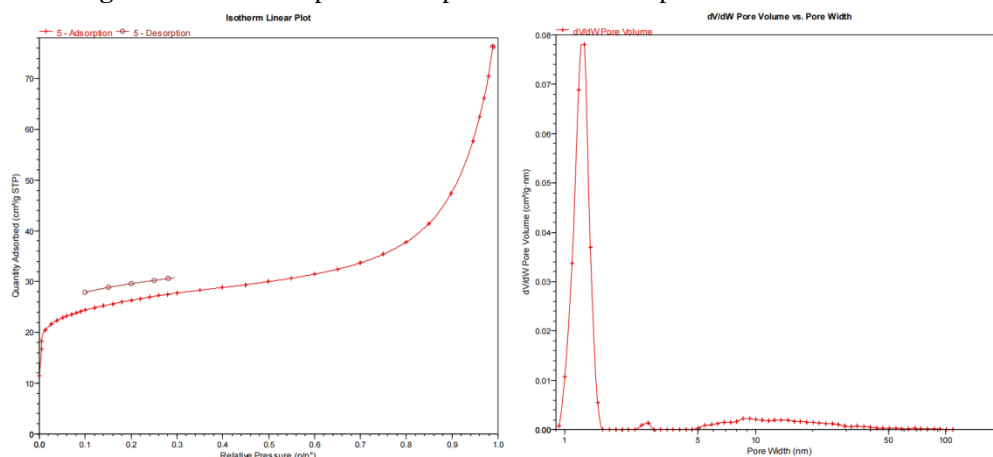


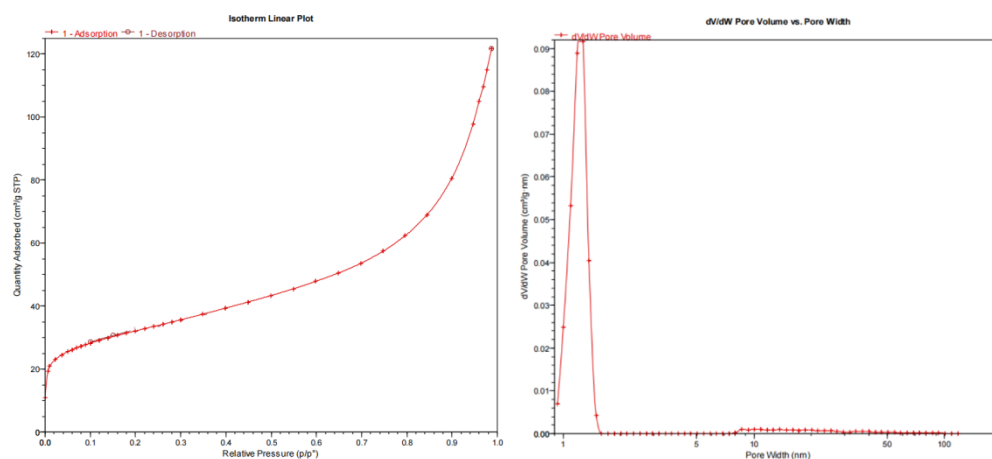
**Figure S1.** The adsorption-desorption isotherm and pore size distribution of ATP.



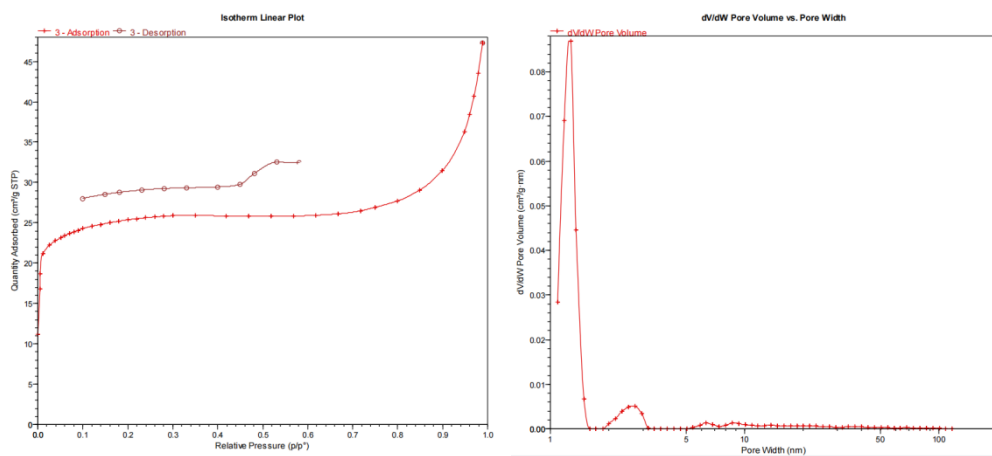
**Figure S2.** The adsorption-desorption isotherm and pore size distribution of BC.



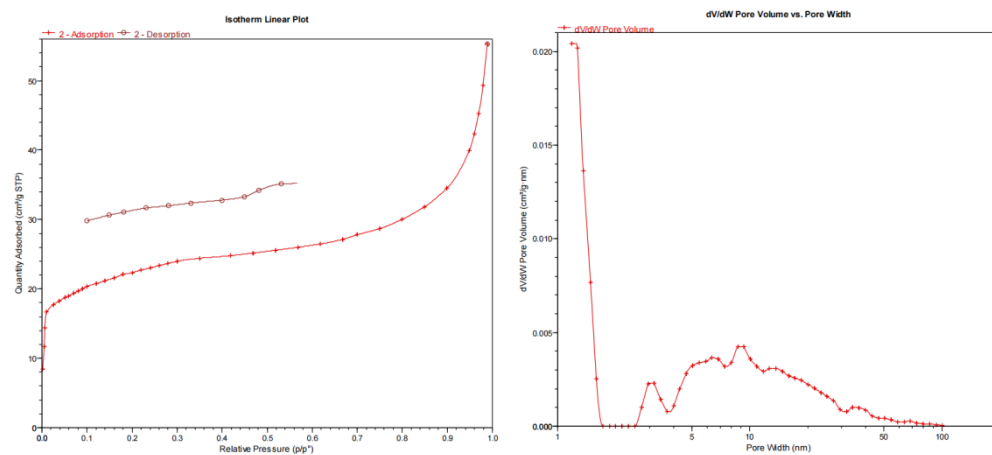
**Figure S3.** The adsorption-desorption isotherm and pore size distribution of ATP/BC-0.01.



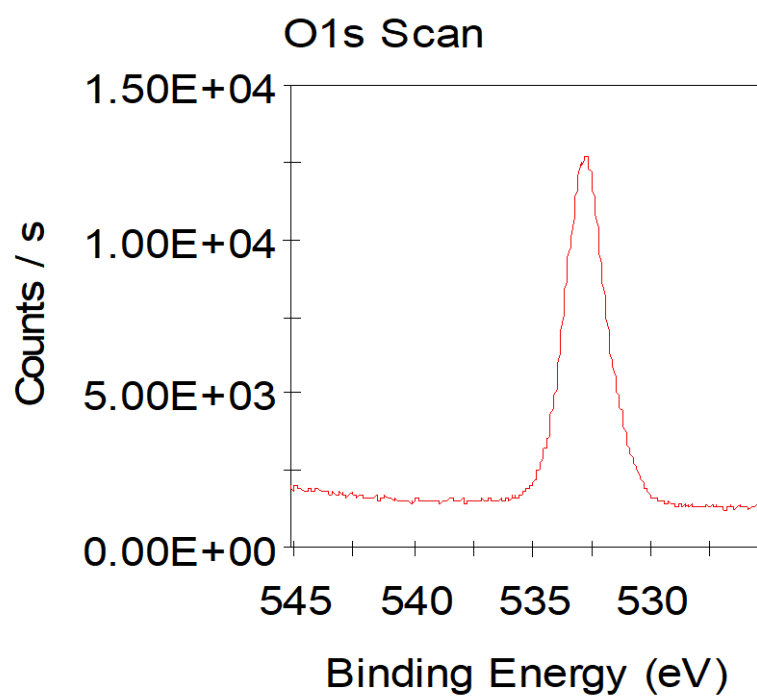
**Figure S4.** The adsorption-desorption isotherm and pore size distribution of ATP/BC-0.1.



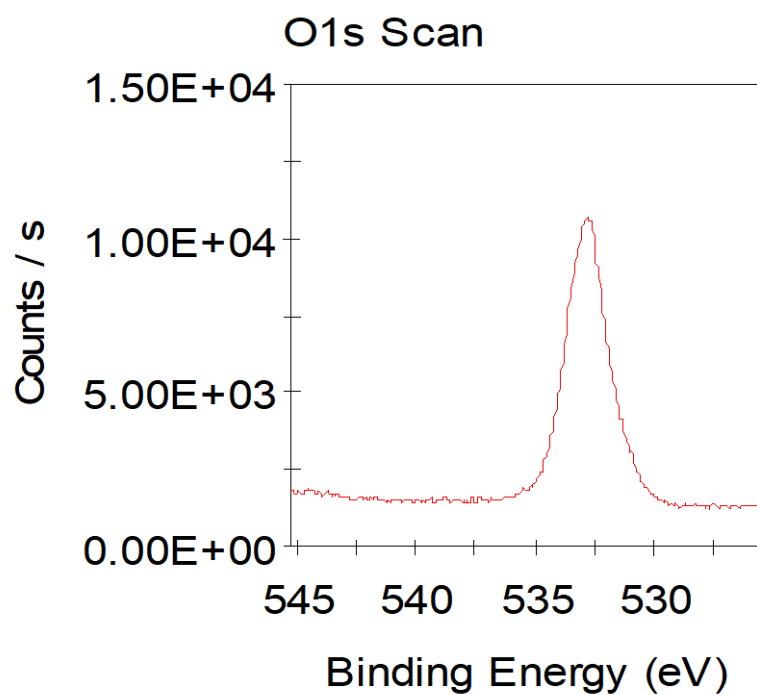
**Figure S5.** The adsorption-desorption isotherm and pore size distribution of ATP/BC-0.3.



**Figure S6.** The adsorption-desorption isotherm and pore size distribution of ATP/BC-0.5.



**Figure S7.** The XPS O1s scan of BC.



**Figure S8.** The XPS O1s scan of ATP/BC.