

Figure S1. a) *Larrea tridentata* plant, b) *L. tridentata* flower, c) *L. tridentata* leaf and fruit.

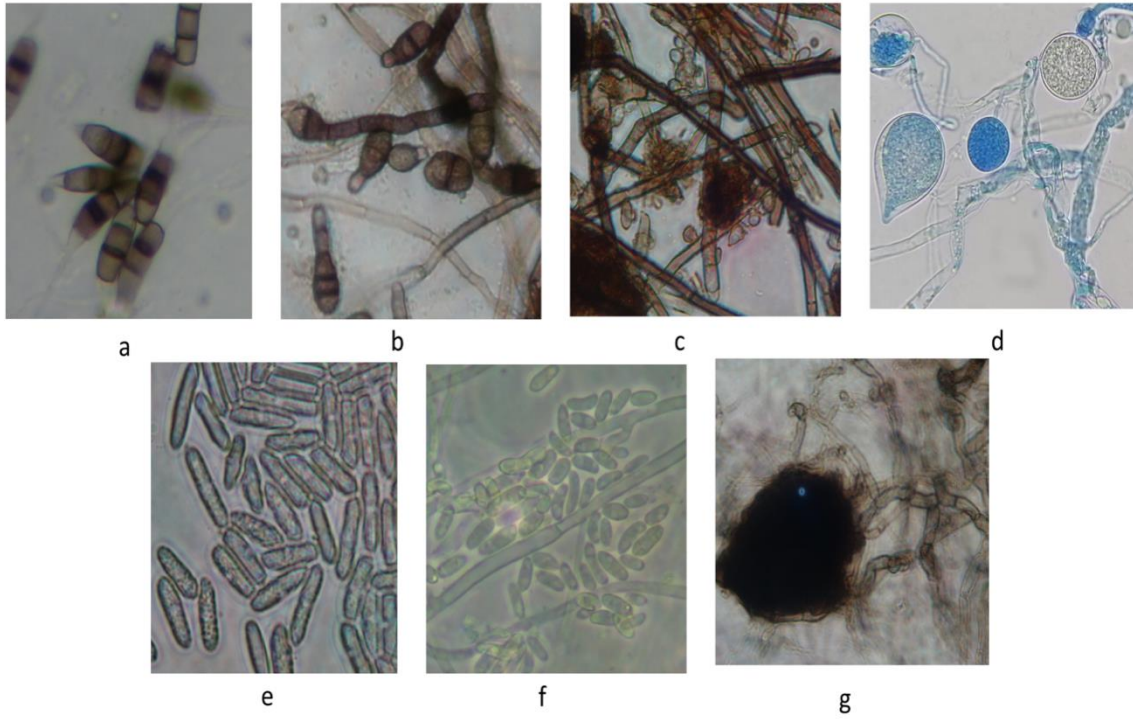


Figure S2. a) Conidia of *Pestalotia* sp., b) Conidia of *Alternaria solani*, c) Conidiophores and conidia of *Botrytis cinerea*, d) Sporangium of *Phytophthora* sp., e) Conidia of *Colletotrichum gloeosporoides*, f) Microconidia of *Fusarium oxysporum*, and g) Mycelium and sclerotium of *Macrophomina* sp. This was examined at 40X magnification under a compound binocular microscope (Carl ZEISS Axio Scope A1).