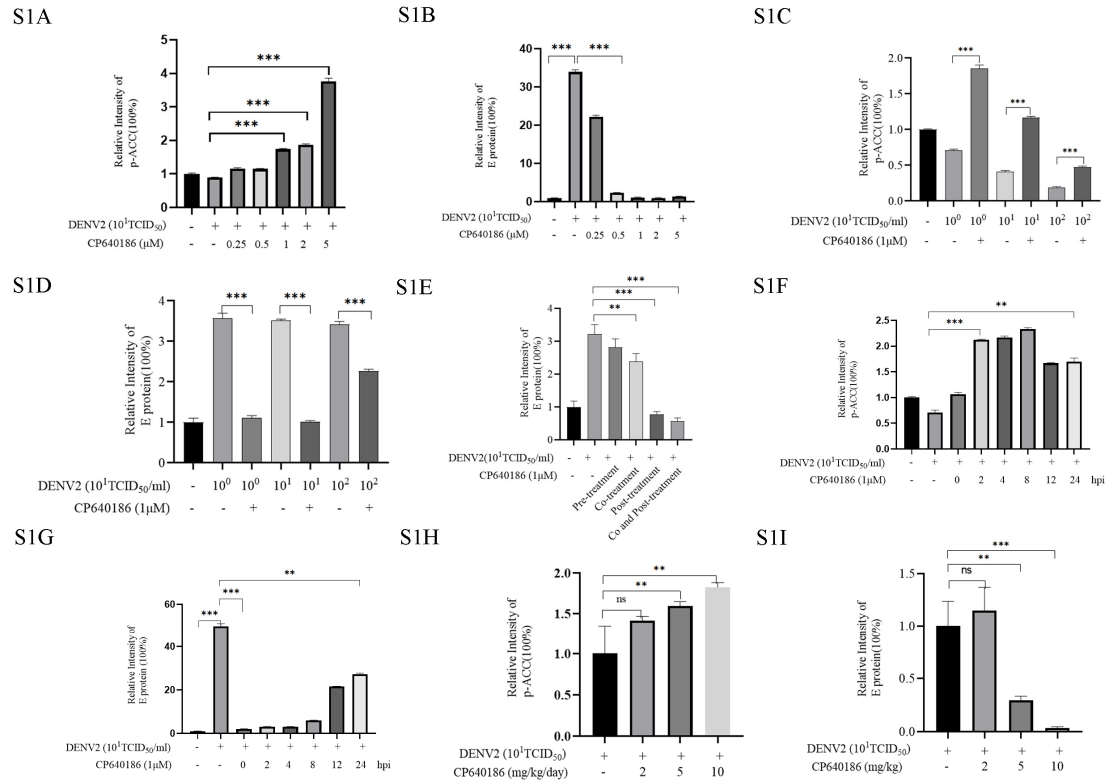
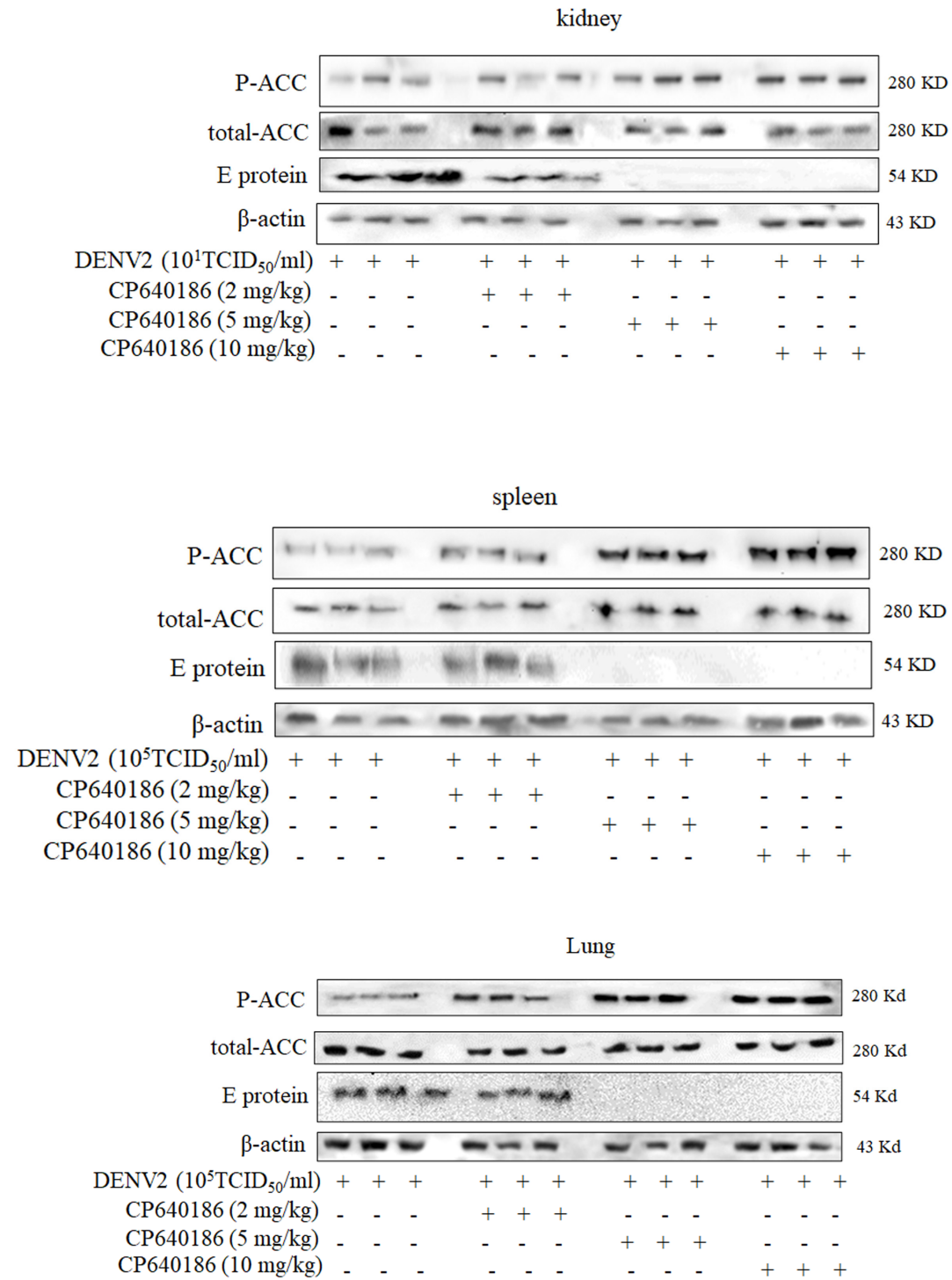


## Supplemental Figures



**Figure S1.** The quantification of western blotting results. (A,B) The quantification of the P-ACC and E protein level in Figure 2A. (C,D) The quantification of the P-ACC and E protein level in Figure 3A. (E) The quantification of E protein level in Figure 4B. (F,G) The quantification of the P-ACC and E protein level in Figure 4F. (H,I) The quantification of the P-ACC and E protein level in Figure 5E. \*\* indicates  $p < 0.01$ . \*\*\* indicates  $p < 0.001$ .



**Figure S2.** The western blotting results in mice tissues.