

Stability and Formulation of Erlotinib in Skin Creams

David Nguyen ^{1,†}, Philippe-Henri Secrétan ^{1,2,†}, Camille Cotteret ¹, Emmanuelle Jacques-Gustave ¹, Céline Greco ^{3,4}, Christine Bodemer ^{4,5}, Joel Schlatter ^{1,6,*},† and Salvatore Cisternino ^{1,7,*},†

Supplemental Results of the stress testing study

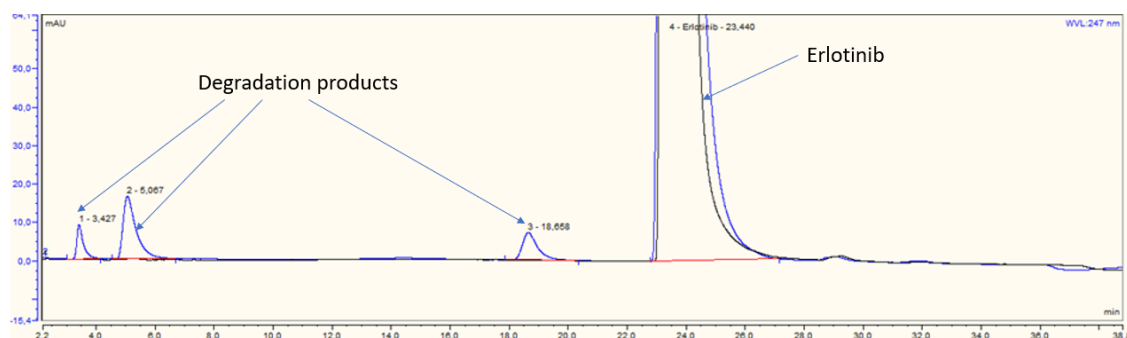


Figure S1: HPLC chromatograms of ERL in acidic conditions. Black chromatogram: the solution analyzed just after exposure to acidic conditions. Blue chromatogram: same solution analyzed after 21 days of exposure to acidic conditions.

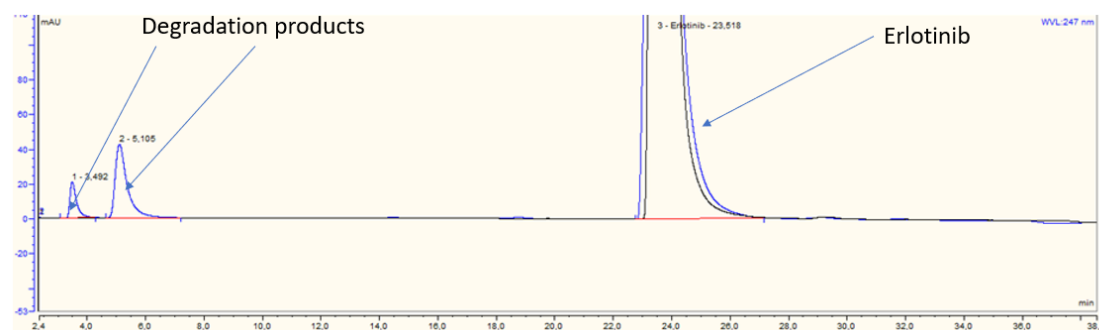


Figure S2: HPLC chromatograms of ERL in alkaline conditions. Black chromatogram: the solution analyzed just after exposure to alkaline conditions. Blue chromatogram: same solution analyzed after 21 days of exposure to alkaline conditions.

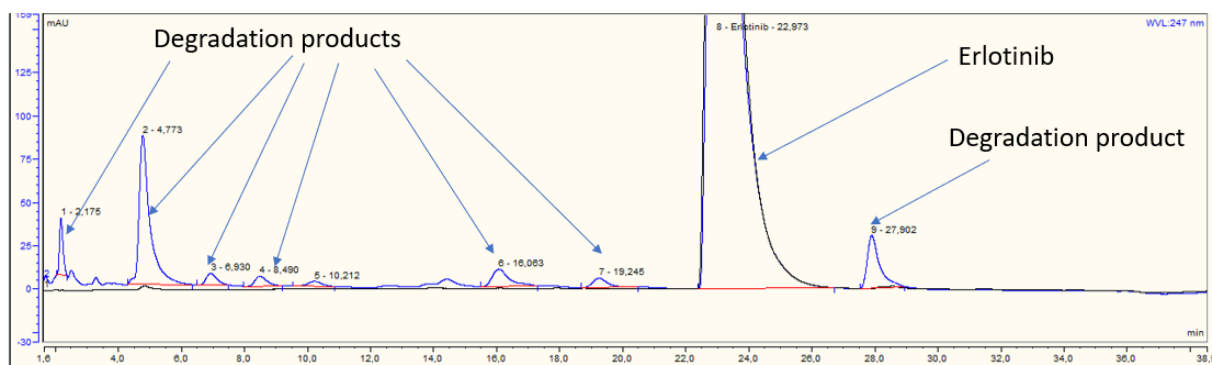


Figure S3: HPLC chromatograms of ERL in oxidative conditions. Black chromatogram: the solution analyzed just after exposure to oxidative conditions. Blue chromatogram: same solution analyzed after 8 hours of exposure to oxidative conditions.

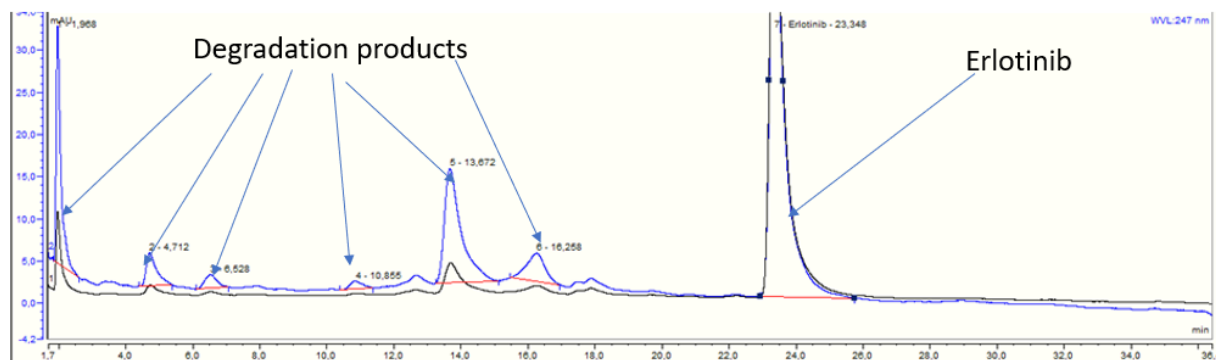


Figure S4: HPLC chromatograms of ERL in photolytic conditions. Black chromatogram: the solution analyzed prior to exposure to photolytic conditions. Blue chromatogram: same solution analyzed after 24 hours to simulated light.