

## Supporting Information

### Preparation and Application of a Chemical Probe for Identifying the Targets of the Marine Cyclic Peptide Kapakahine A

Rie Kamihira <sup>1</sup>, Yoichi Nakao <sup>1,2,\*</sup>

<sup>1</sup> Research Institute for Science and Engineering, Waseda University, 3-4-1 Okubo, Shinjuku-ku, Tokyo 169-8555, Japan

<sup>2</sup> School of Advanced Science and Engineering, Waseda University, Shinjuku-ku, Tokyo 169-8555, Japan

\* Correspondence: ayocha@waseda.jp; Tel.: +81-3-5286-3100

#### Table of contents

#### Experimental section

**Figure S1.** HRESIMS (neg.) of Kap A-probe (3).

**Figure S2.** <sup>1</sup>H NMR spectrum (600 MHz, methanol-*d*<sub>4</sub>) of Kap A-probe (3). **Figure S3.** HPLC chart of Kap A-probe (3).

200109nega1723 #26 RT: 0.12 AV: 1 NL: 3.76E5  
T: FTMS - p ESI Full ms [133.4000-2000.0000]

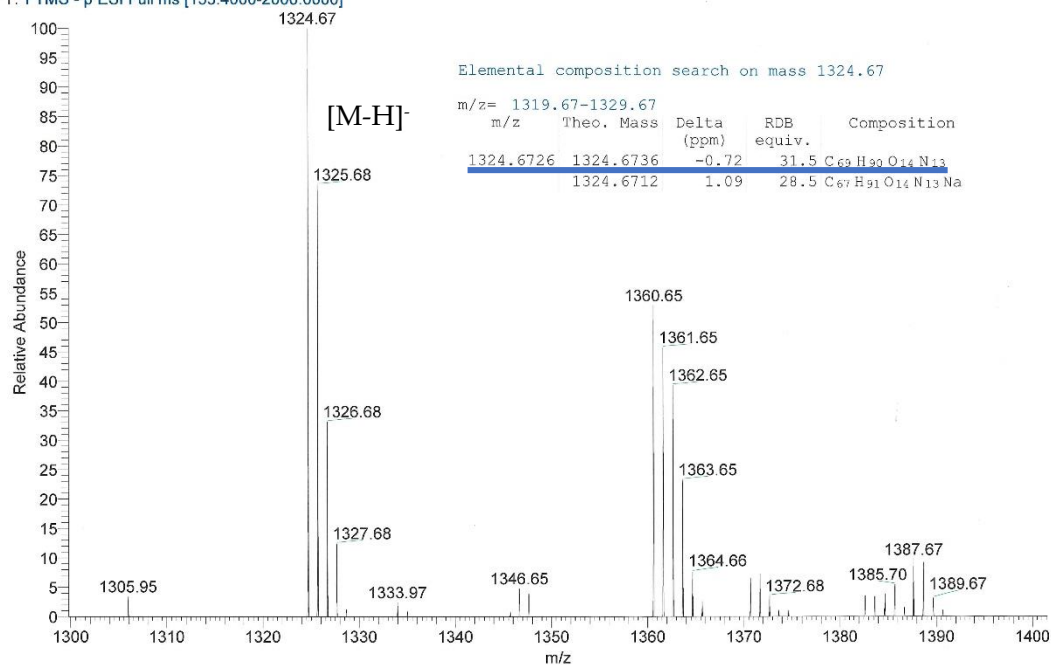


Figure S1. HRESIMS (neg.) of Kap A-probe (3).

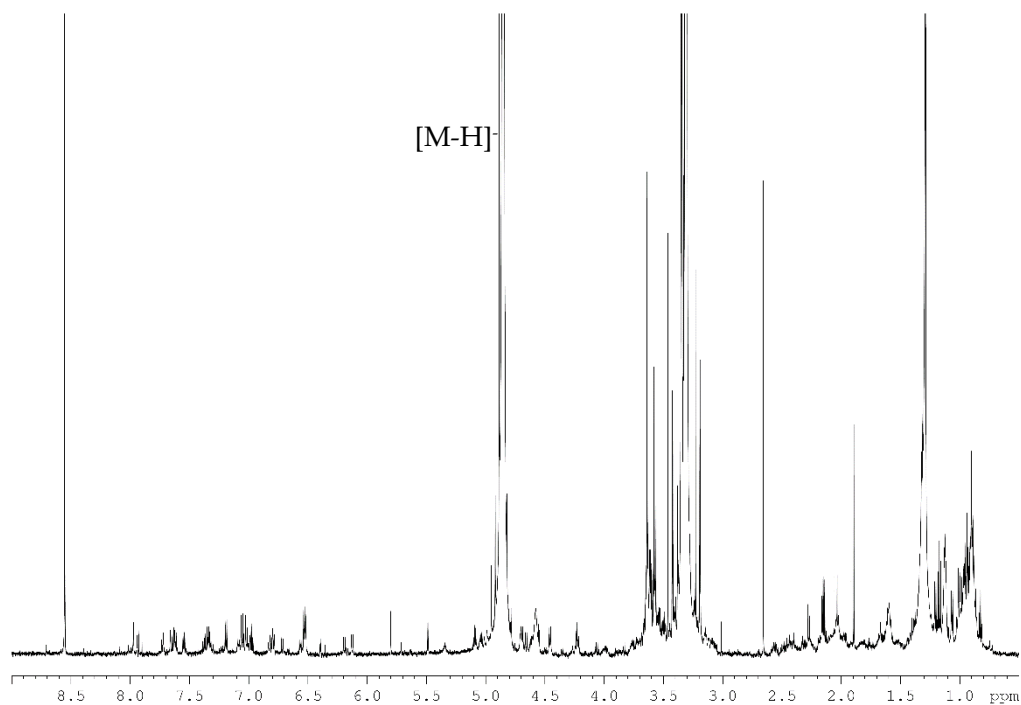
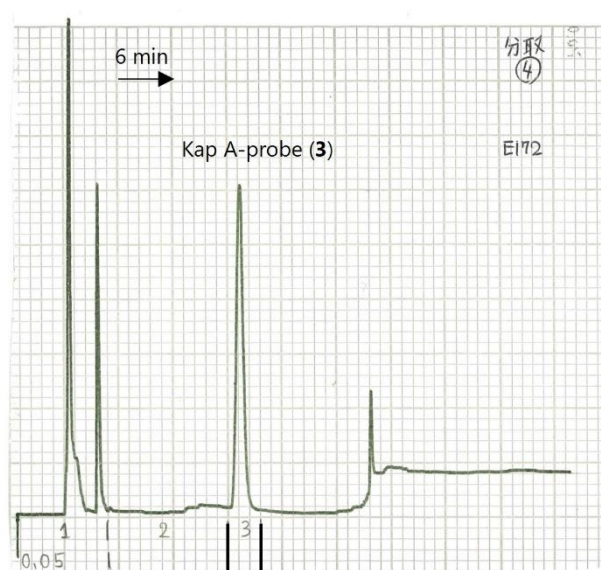


Figure S2. <sup>1</sup>H NMR spectrum (600 MHz, methanol-*d*<sub>4</sub>) of Kap A-probe (3).



**Figure S3.** HPLC chart of Kap A probe (3).