

Table S1. The *Solanum tuberosum* L. metabolites of samples irrigated with treated and untreated AMD. The retention times (min), compounds name, and accurate masses (m/z).

Peaks	Compound Name	Molecular formula	r <sub>T</sub> (min)	Accurate mass (m/z)	Literature
1	Calystegine A3	C <sub>7</sub> H <sub>13</sub> NO <sub>3</sub>	0.79	160.0969	Petersson <i>et al.</i> 2013
2	Quinic acid	C <sub>7</sub> H <sub>12</sub> O <sub>6</sub>	0.95	193.0342	Villegas and Kojima, 1985
3	Kukoamine A	C <sub>28</sub> H <sub>42</sub> N <sub>4</sub> O <sub>6</sub>	4.21	531.3184	Funayama <i>et al.</i> 1980
4	Chlorogenic acid	C <sub>16</sub> H <sub>18</sub> O <sub>9</sub>	4.89	355.1030	Villegas and Kojima, 1985
5	Caffeic acid	C <sub>9</sub> H <sub>8</sub> O <sub>4</sub>	5.36	181.0497	Mattila and Hellström, 2007
6	Rutin	C <sub>27</sub> H <sub>30</sub> O <sub>16</sub>	6.53	611.1616	Oliveira <i>et al.</i> 2013
7	Chaconine	C <sub>45</sub> H <sub>73</sub> NO <sub>14</sub>	7.02	852.5094	Duggan <i>et al.</i> 2020
8	Solanidine	C <sub>27</sub> H <sub>43</sub> NO	7.06	398.3419	Wang <i>et al.</i> 2020
9	Solanine	C <sub>45</sub> H <sub>73</sub> NO <sub>15</sub>	7.07	868.5056	Duggan <i>et al.</i> 2020
10	Azelaic acid	C <sub>9</sub> H <sub>16</sub> O <sub>4</sub>	7.29	189.1129	Martins <i>et al.</i> 2016
11	Limonene	C <sub>10</sub> H <sub>16</sub>	10.39	137.1325	Schieberle <i>et al.</i> 1987
12	Oleamide	C <sub>18</sub> H <sub>35</sub> NO	11.44	282.2788	Cravatt <i>et al.</i> 1996
13	Linolenic acid	C <sub>18</sub> H <sub>30</sub> O <sub>2</sub>	11.61	281.2476	Alexandri <i>et al.</i> 2012

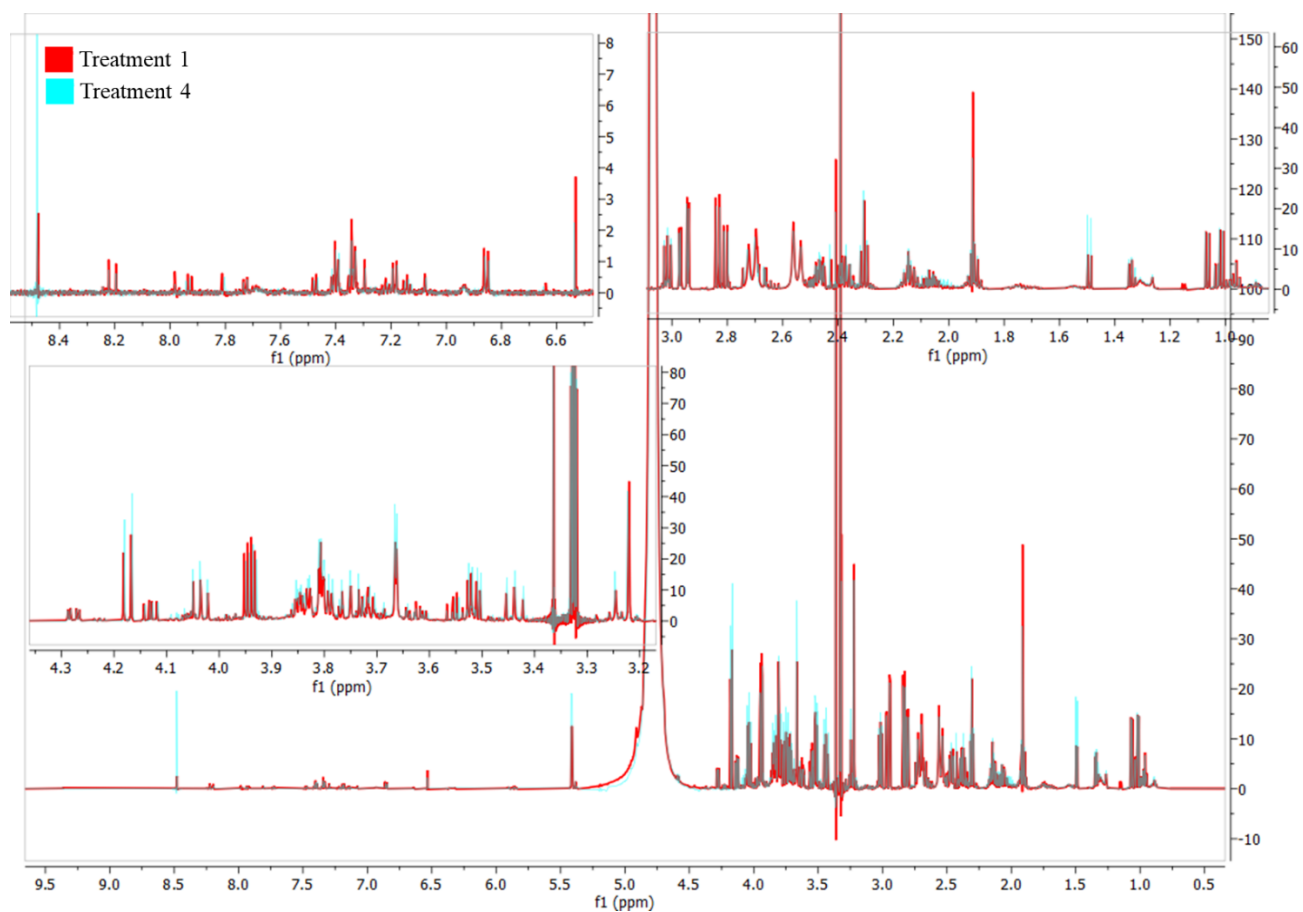


Figure S1.  $^1\text{H}$  NMR spectra (superimposed) of *Solanum tuberosum* L. irrigated with treatment 1 and 4.

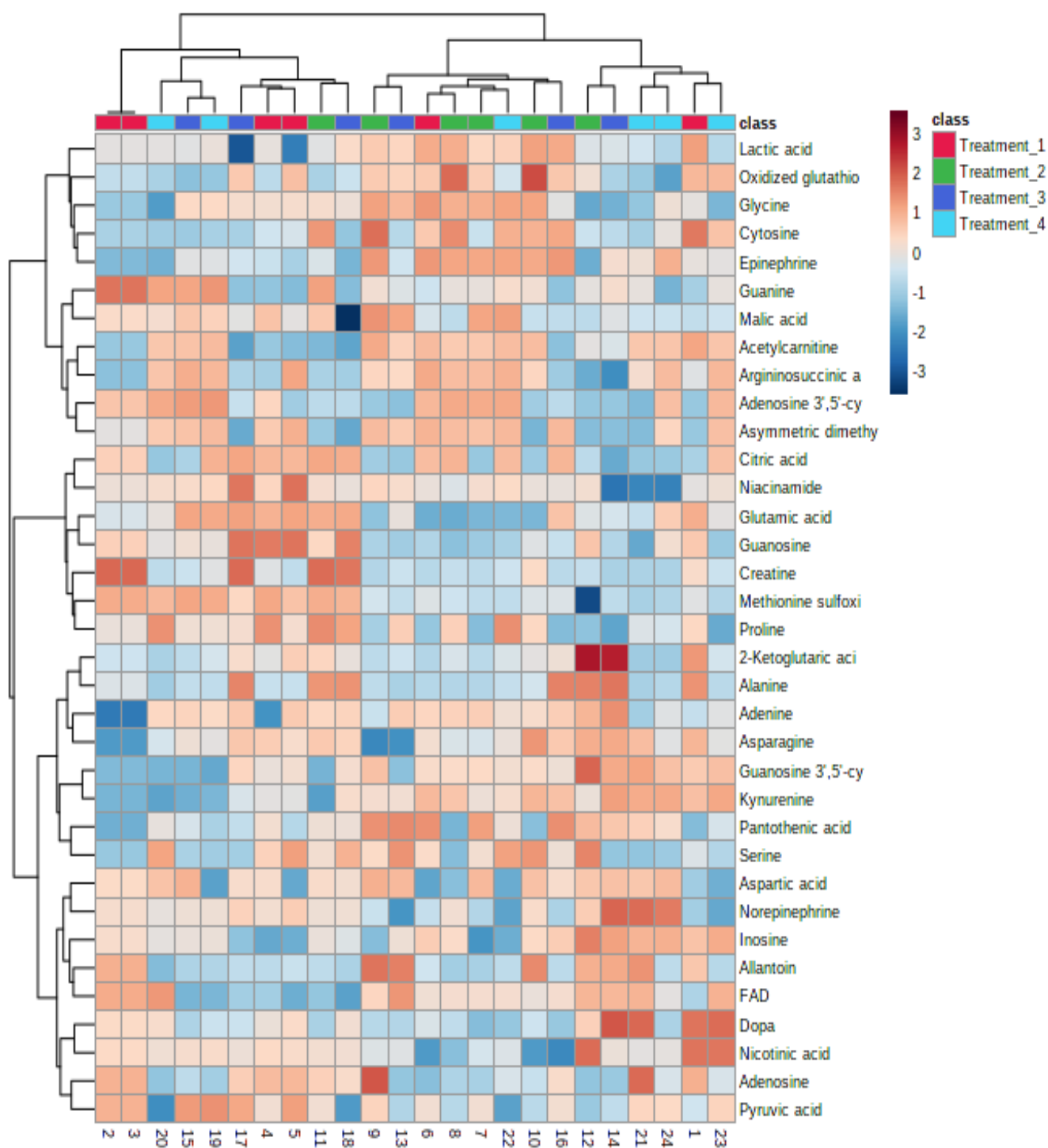


Figure S2. The heatmap for FA: AMD treatments on *Solanum tuberosum* L. samples primary metabolites identified from LC-MS/MS (Liquid Chromatography with Tandem Mass Spectrometry) triple quadrupole using unsupervised hierarchical clustering. The row represents the primary metabolites and the column represents samples irrigated with FA: AMD treatments.

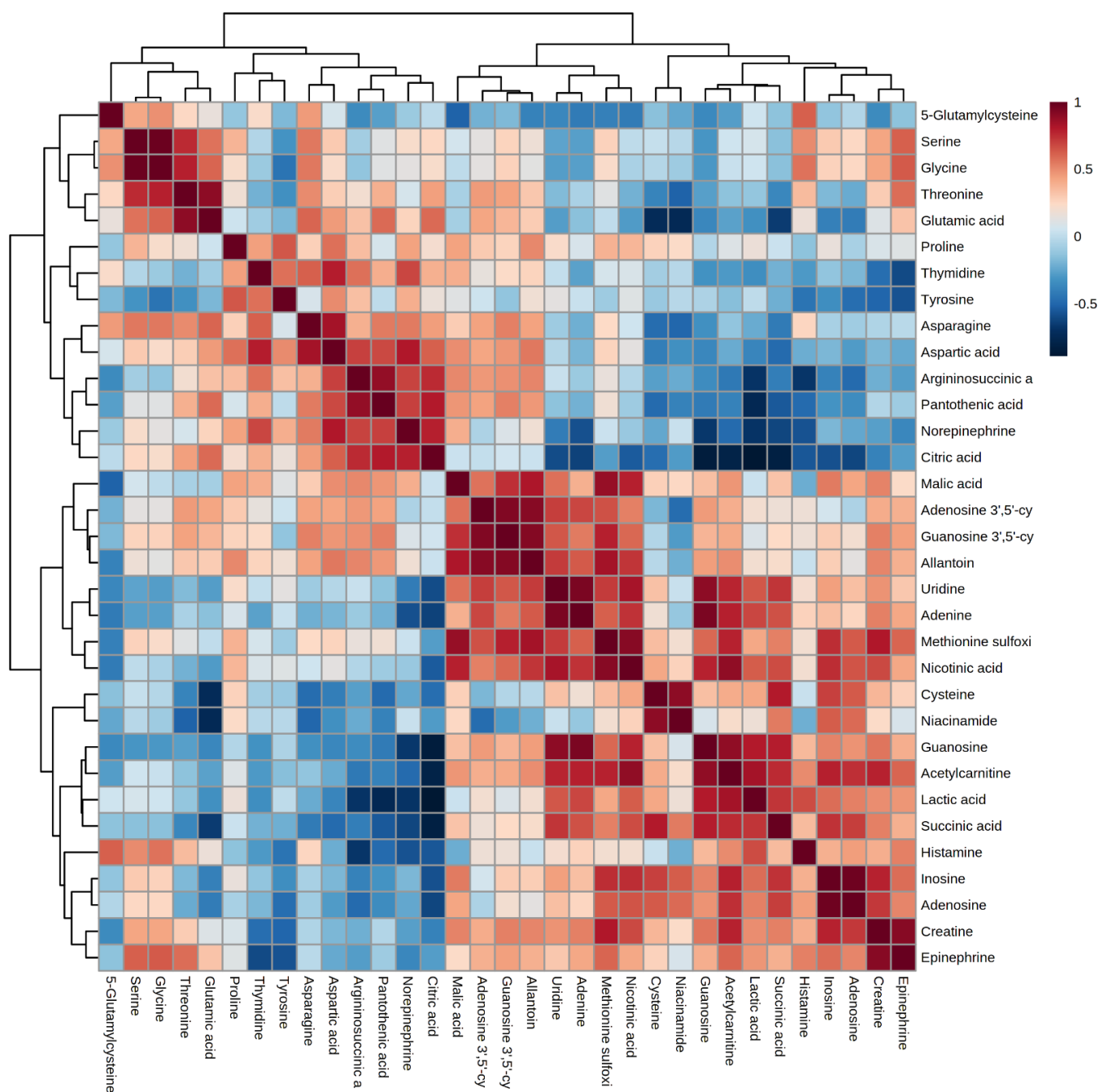


Figure S3. A correlation heatmap produced by MetaboAnalyst for *Solanum tuberosum* L. samples irrigated with treated and untreated AMD during the growing season. Red squares in the heatmap indicate increased excretion, while blue squares indicate decreased excretion.