

## Supporting Information

### Identification of $\alpha$ -Glucosidase Inhibitors from *Scutellaria edelbergii*: ESI-LCMS and computational approach

Muddaser Shah<sup>1,2</sup>, Hazir Rahman<sup>3</sup>, Ajmal Khan<sup>2</sup>, Shabana Bibi<sup>4,5</sup>, Obaid Ullah<sup>2,6</sup>, Saeed Ullah<sup>2,7</sup>, Najeeb Ur Rehman<sup>2\*</sup>, Waheed Murad<sup>1\*</sup>, and Ahmed Al-Harrasi<sup>2\*</sup>

<sup>1</sup> Department of Botany, Abdul Wali Khan University Mardan, Mardan 23200, Pakistan; muddasersshah@awkum.edu.pk (M.S)

<sup>2</sup> Natural and Medical Sciences Research Center, University of Nizwa, P.O. Box 33, Birkat Al Mauz, Nizwa 616, Oman; ajmalkhan@unizwa.edu.om (A.K); aharrasi@unizwa.edu.om (A.A.-H); najeeb@unizwa.edu.om (N.U.R)

<sup>3</sup> Department of Microbiology, Abdul Wali Khan University Mardan, Mardan 23200, Pakistan; hazirrahman@awkum.edu.pk

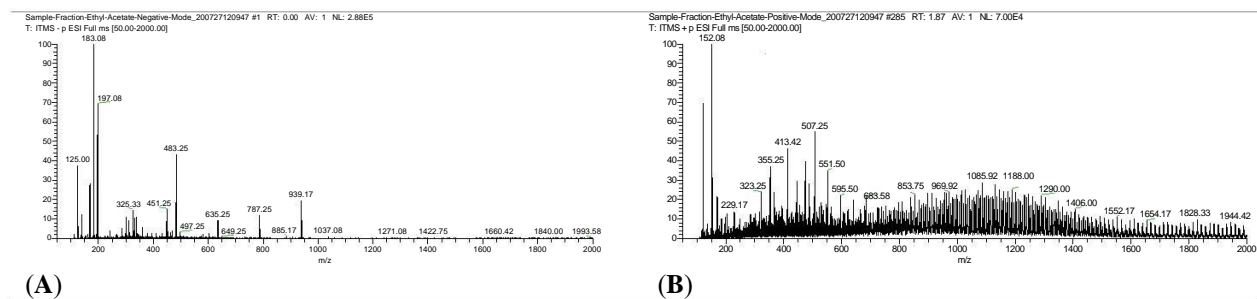
<sup>4</sup> Yunnan Herbal Laboratory, College of Ecology and Environmental Sciences, Yunnan University, Kunming 650091, Yunnan, China

<sup>5</sup> International Joint Research Center for Sustainable Utilization of Cordyceps Bioresources in China and Southeast Asia, Yunnan University, Kunming 650091, Yunnan, China; shabana\_bibi@ynu.edu.cn (S.B).

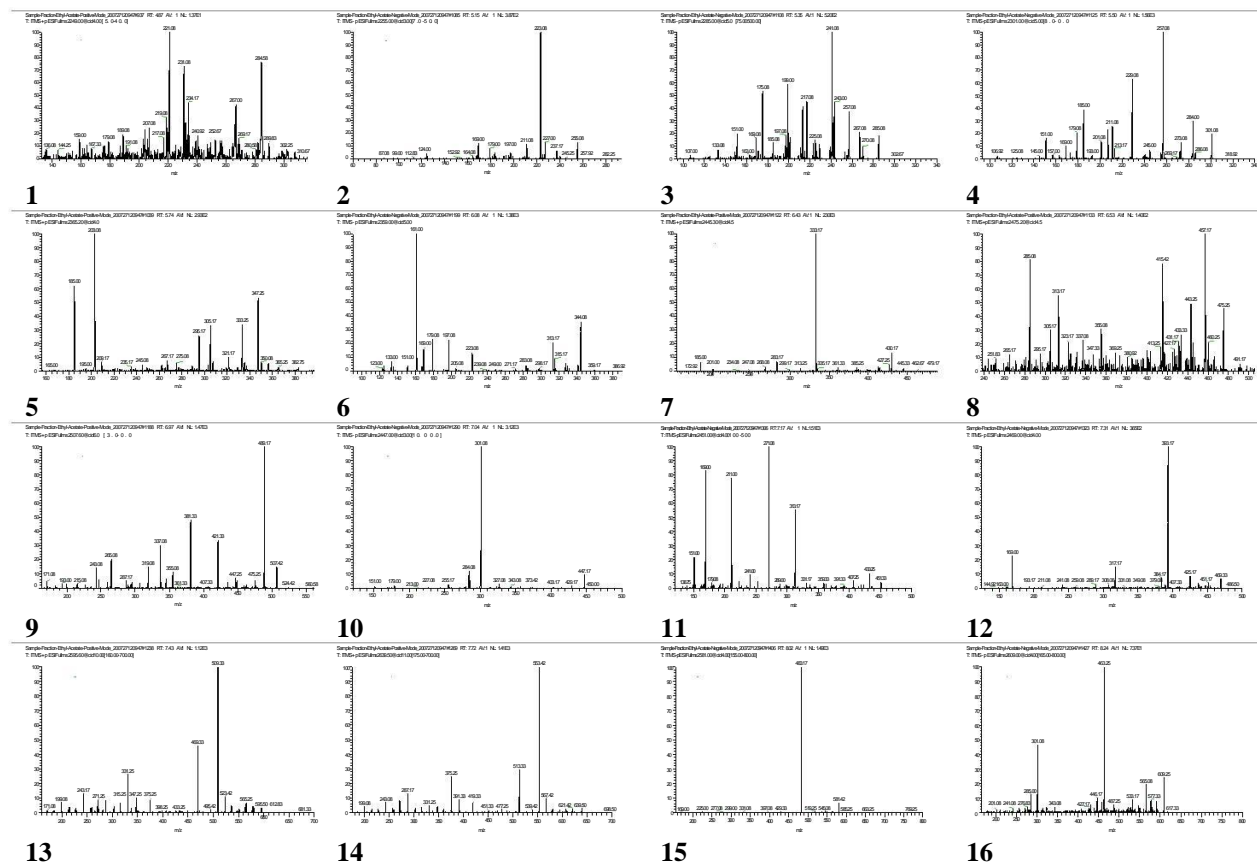
<sup>6</sup> Department of Chemistry, University of Malakand, Chakdara 18800, Pakistan; obaidullah@unizwa.edu.om (O.U)

<sup>7</sup> H.E.J. Research Institute of Chemistry, International Center for Chemical and Biological Science, University of Karachi, Karachi-75270, Pakistan. saeedullah@iccs.edu (S.U).

Correspondence: waheedmurad@awkum.edu.pk (W.M); najeeb@unizwa.edu.om (N.U.R); aharrasi@unizwa.edu.om (A.A.-H).



**Figure S1.** Full-scan ESI-LCMS chromatogram of the EtOAc fraction of *S.edelbergii*. (A) Negative ionization mode and (B) positive ionization mode.



**Figure S2.** Chromatograms of ESI-LCMS identified compounds in the EtOAc fraction of *S.edelbergii*.