

Figure S1. The transparent flowchart of the materials and methods section.

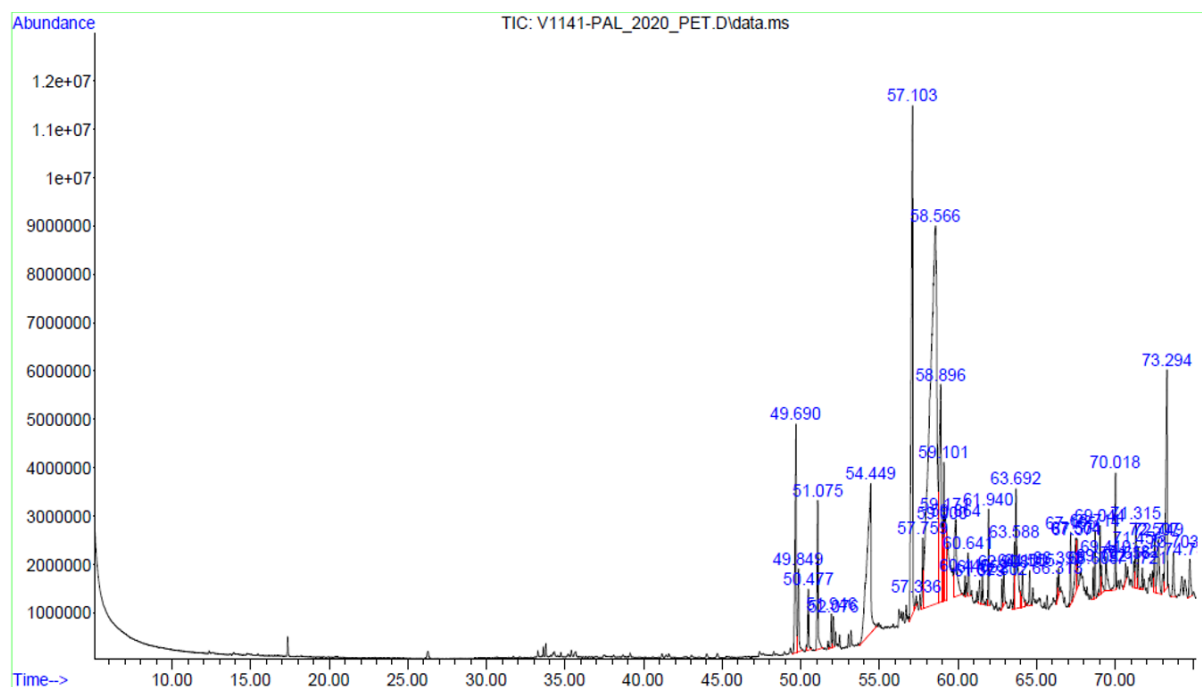


Figure S2. Representative full scan chromatographic profile of ethanolic extract (leaves) of *Physalis angulata*

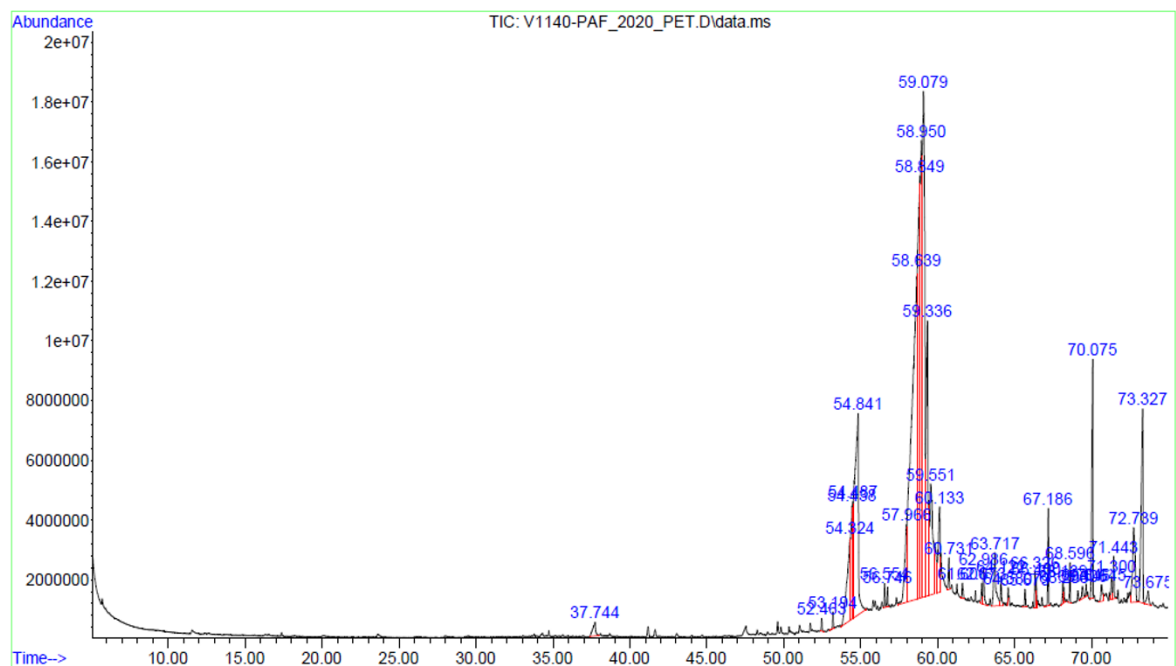


Figure S3. Representative full scan chromatographic profile of ethanolic extract (fruits) of *Physalis angulata*.

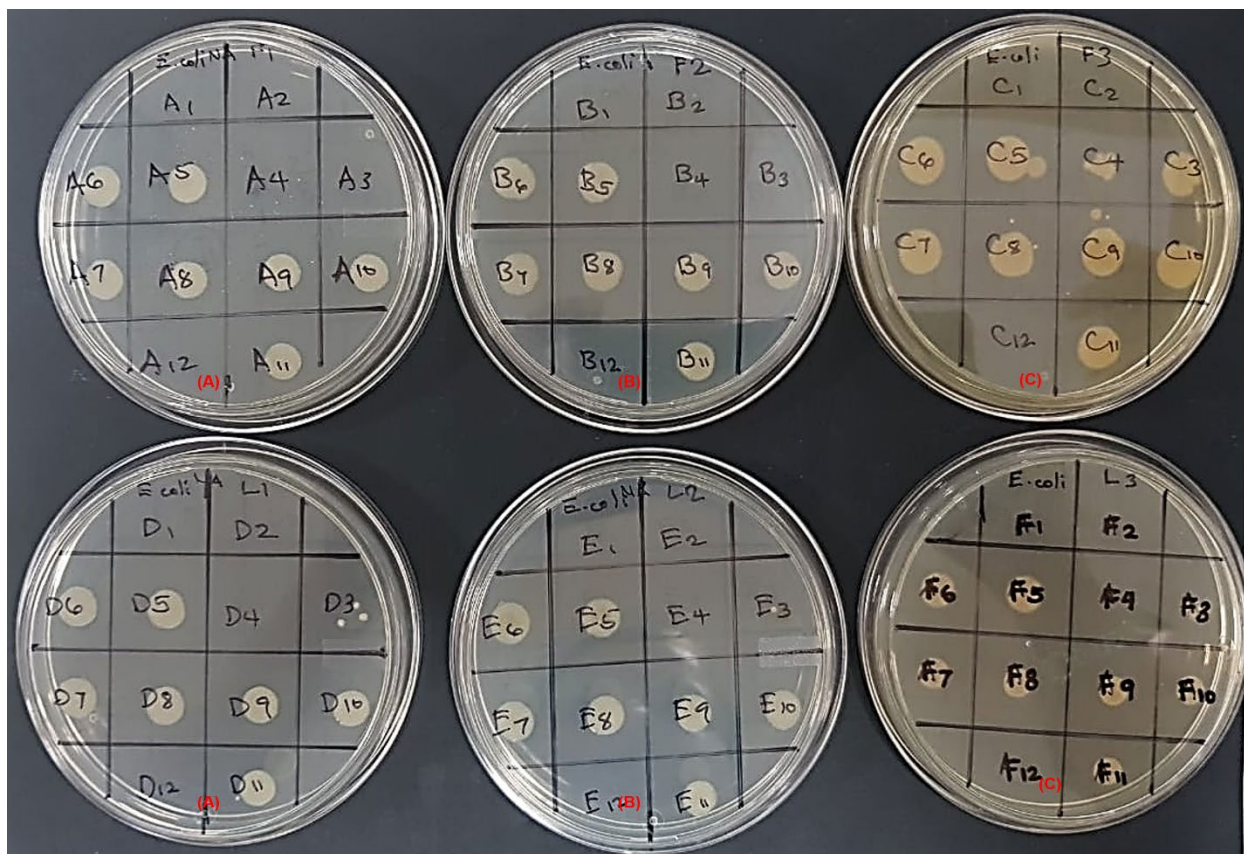


Figure S4. Antibacterial activity of *Physalis angulata* fruit extracts. Plate A: petroleum ether, Plate B: ethyl acetate, and Plate C: ethanol extracts.

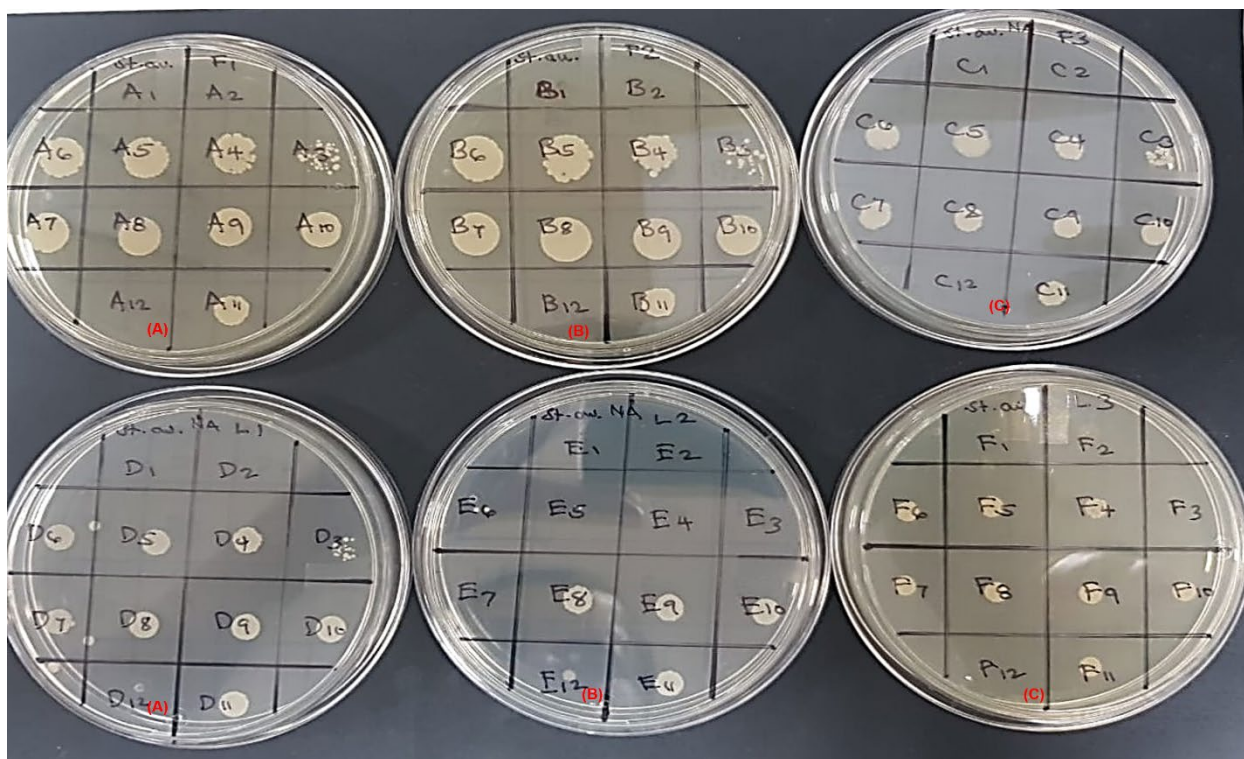


Figure S5. Antibacterial activity of *Physalis angulata* leaves extracts. Plate A: petroleum ether, Plate B: ethyl acetate, and Plate C: ethanol extracts