

Figure S1. Effects of jasminin on expression of IFN- α and IFN- β in RAW 264.7 cells. RAW 264.7 cells were stimulated with jasminin (3.1, 12.5, 50, and 200 μ M) for 24 h. IFN- α and IFN- β were measured by ELISA after the cell culture supernatants were harvested, and 0.25 μ g/ml poly (I:C) was added as a positive control. *** p <0.001 Values are expressed as mean \pm SD, $n \geq 3$. * p <0.05, ** vs control (0: jasminin-untreated).

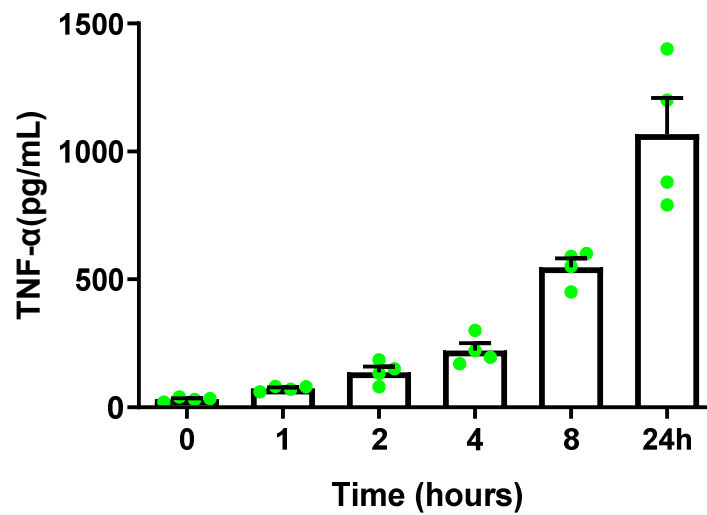


Figure S2. Kinetics of TNF- α production in RAW264.7 cells stimulated with jasminin (50 μ M). Supernatants collected at different times were tested for the presence of TNF- α using a commercial ELISA kit. Means \pm SD from four duplicate experiments.