

Supplementary Materials

**Figure S1** The  $^1\text{H}$ -NMR spectrum of compound **1**

**Figure S2** The  $^{13}\text{C}$ -NMR spectrum of compound **1**

**Figure S3** The  $^1\text{H}$ -NMR spectrum of compound **2**

**Figure S4** The  $^{13}\text{C}$ -NMR spectrum of compound **2**

**Figure S5** The  $^1\text{H}$ -NMR spectrum of compound **3**

**Figure S6** The  $^{13}\text{C}$ -NMR spectrum of compound **3**

**Figure S7** The  $^1\text{H}$ -NMR spectrum of compound **4**

**Figure S8** The  $^{13}\text{C}$ -NMR spectrum of compound **4**

**Figure S9** The  $^1\text{H}$ -NMR spectrum of compound **5**

**Figure S10** The  $^{13}\text{C}$ -NMR spectrum of compound **5**

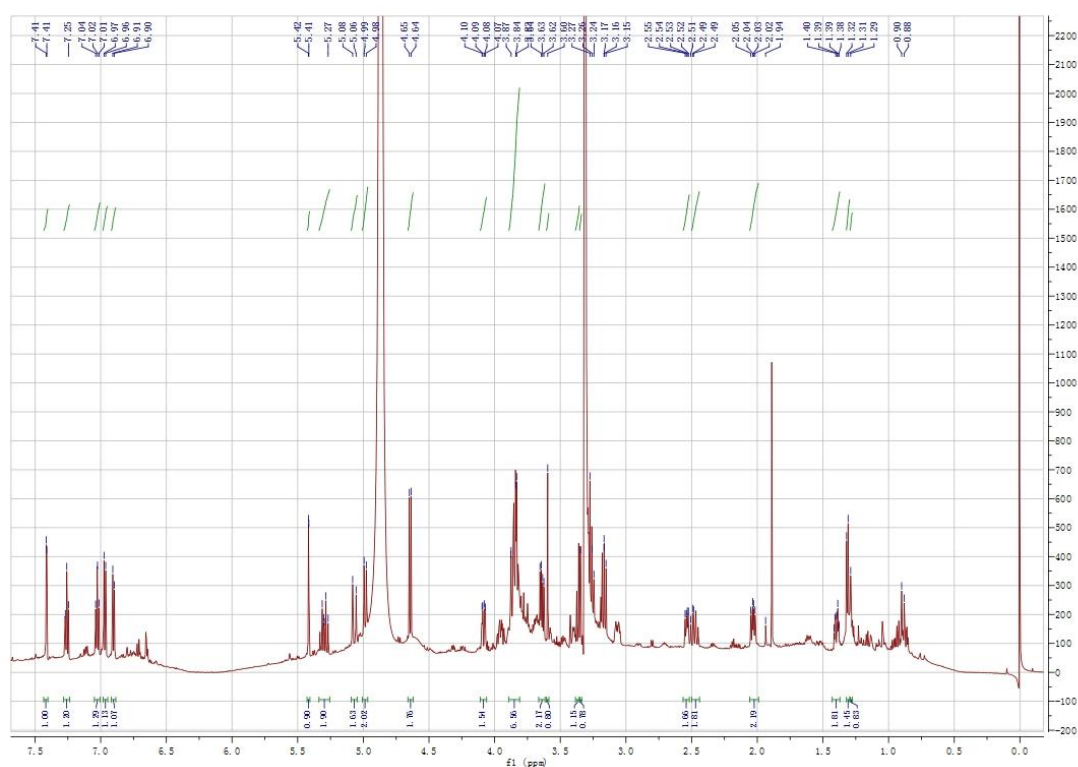
**Figure S11** The HR-ESI-MS spectrum of compound **1**

**Figure S12** The HR-ESI-MS spectrum of compound **2**

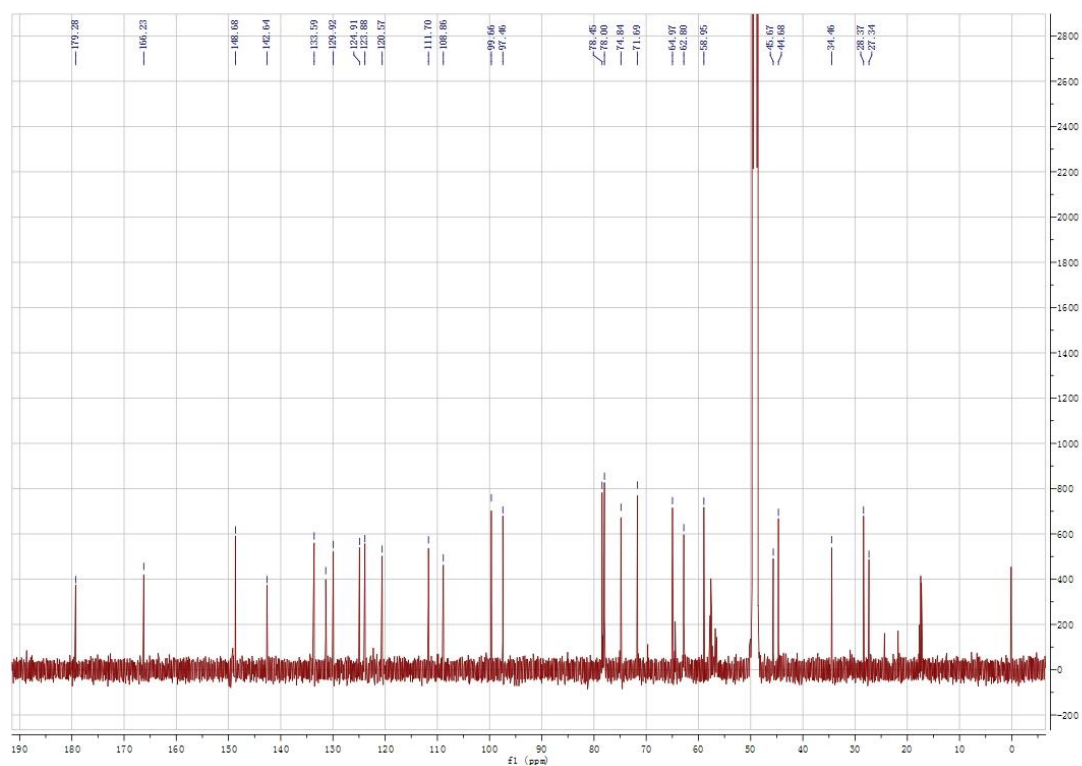
**Figure S13** The HR-ESI-MS spectrum of compound **3**

**Figure S14** The HR-ESI-MS spectrum of compound **4**

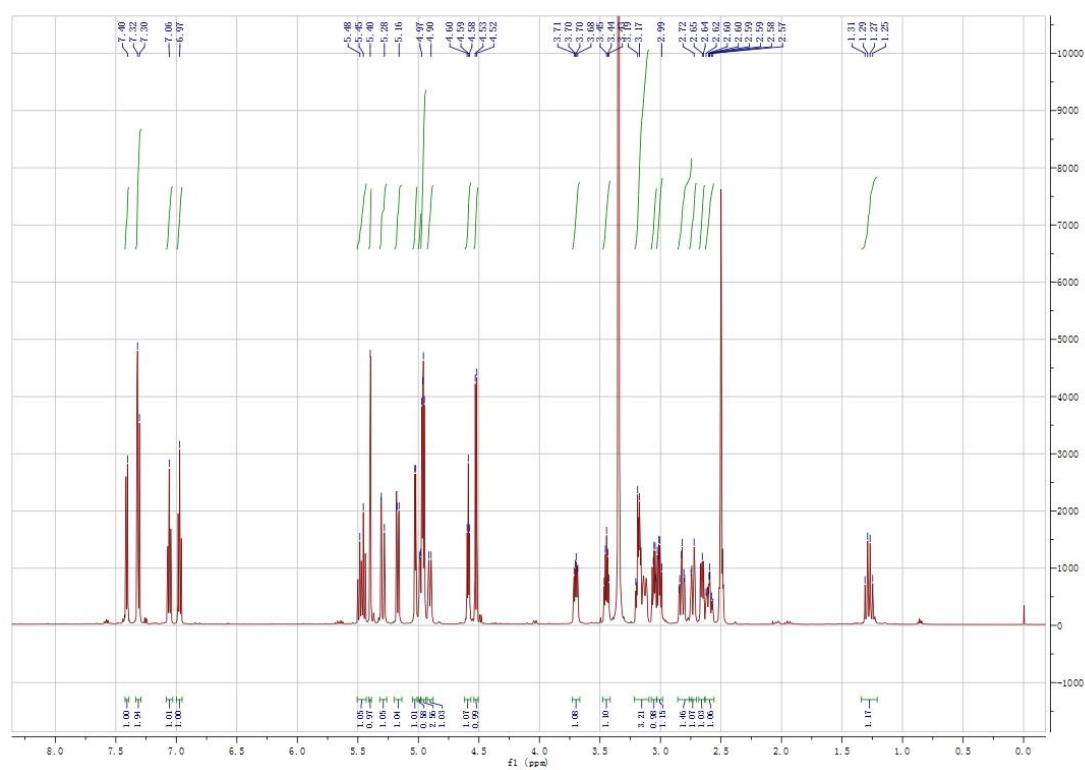
**Figure S15** The HR-ESI-MS spectrum of compound **5**



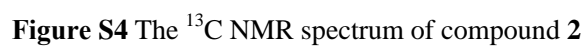
**Figure S1** The  $^1\text{H}$ -NMR spectrum of compound **1**

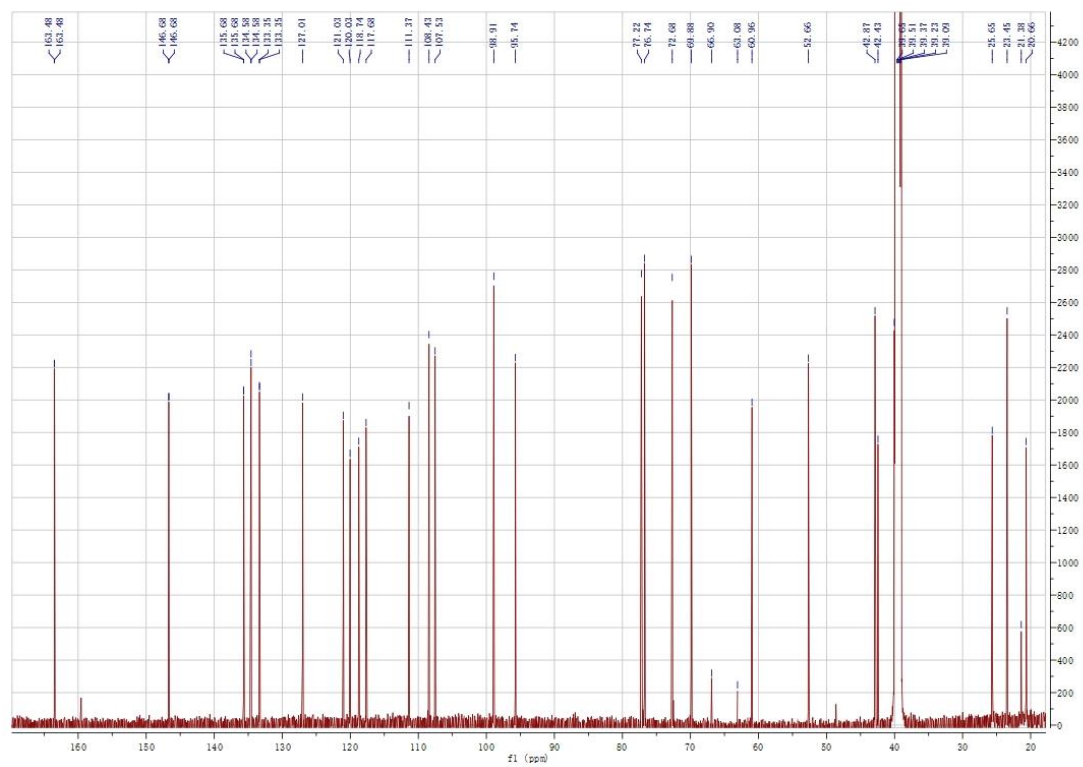


**Figure S2** The  $^{13}\text{C}$  NMR spectrum of compound **1**

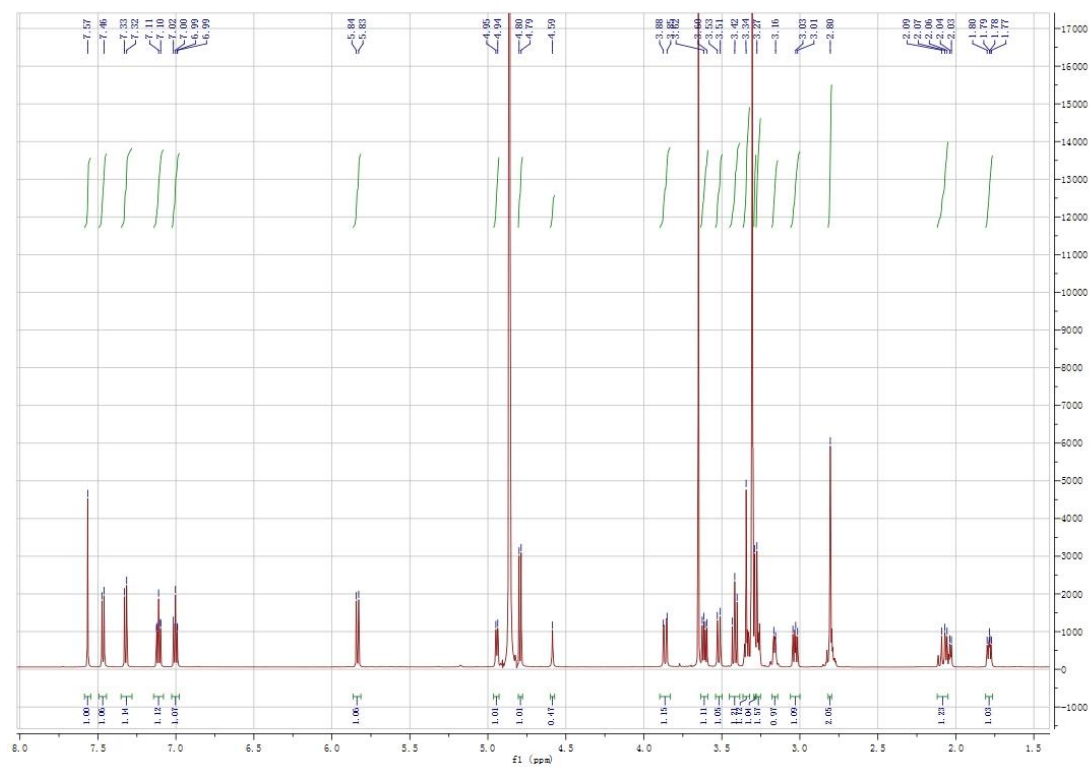


**Figure S3** The  $^1\text{H}$  NMR spectrum of compound **2**

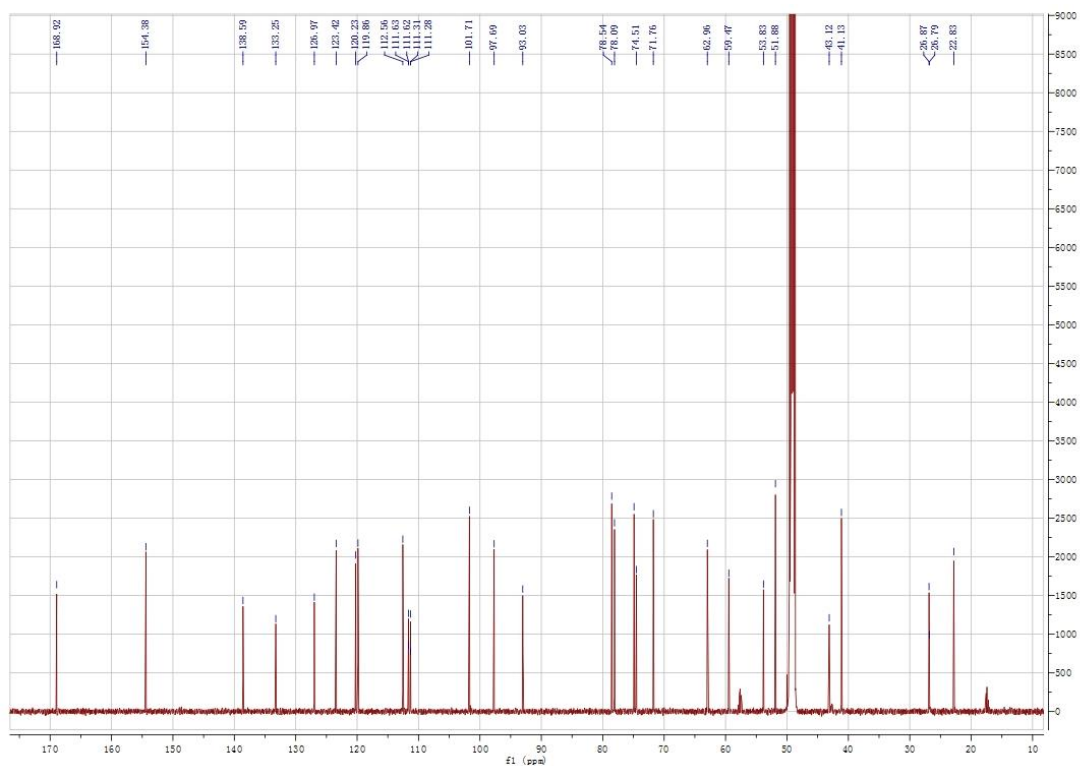




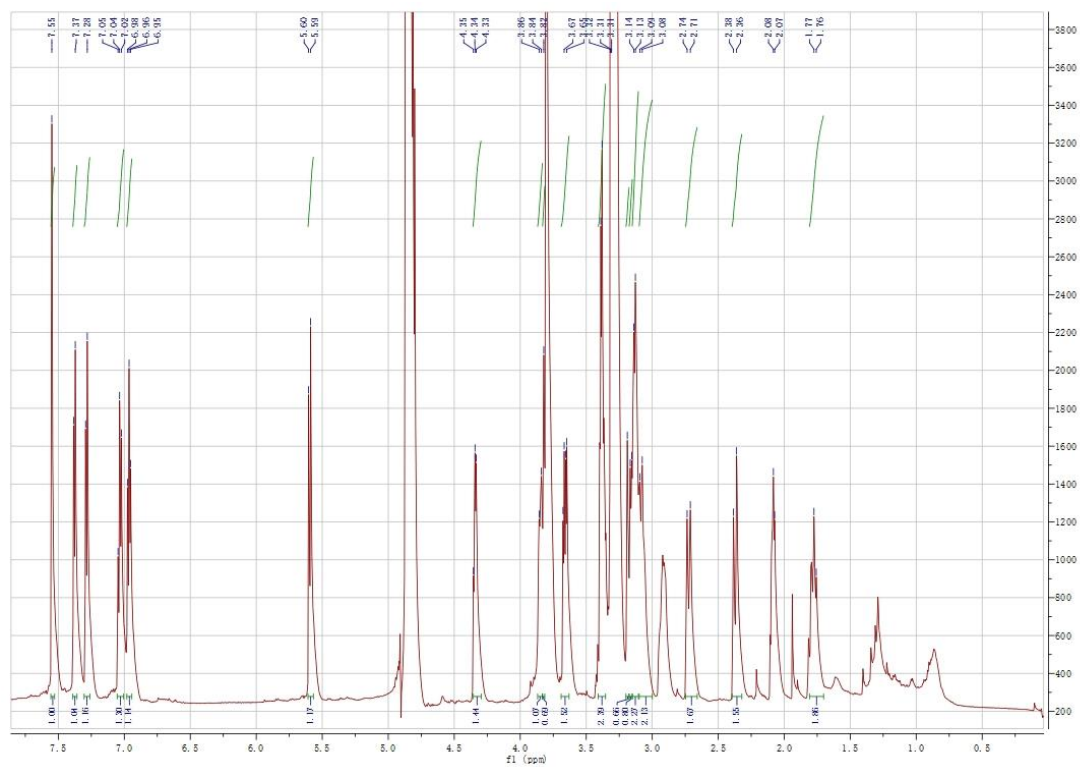
**Figure S6** The <sup>13</sup>C NMR spectrum of compound **3**



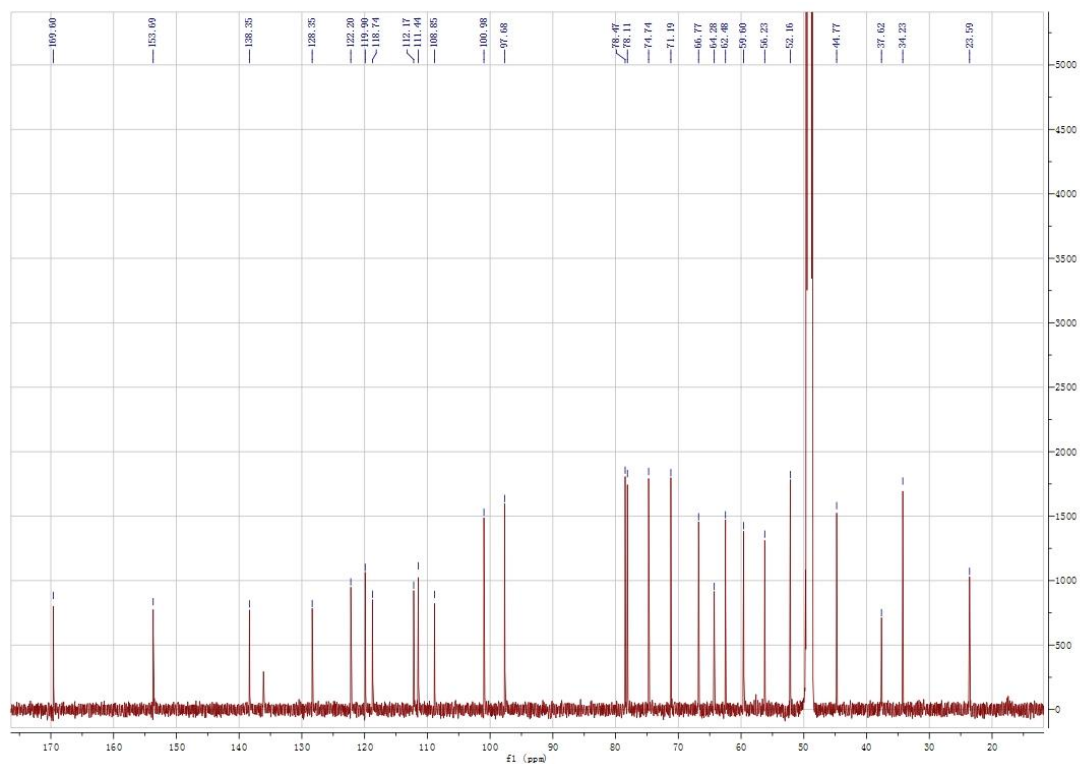
**Figure S7** The <sup>1</sup>H NMR spectrum of compound **4**



**Figure S8** The  $^{13}\text{C}$  NMR spectrum of compound **4**



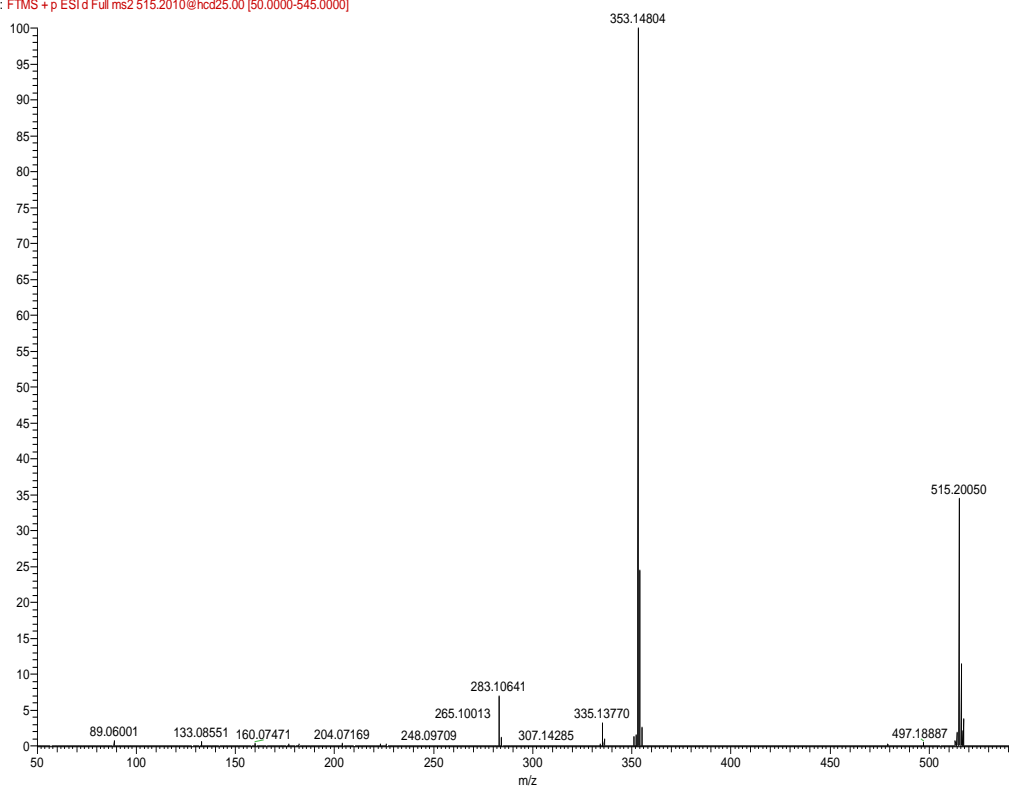
**Figure S9** The  $^1\text{H}$  NMR spectrum of compound **5**



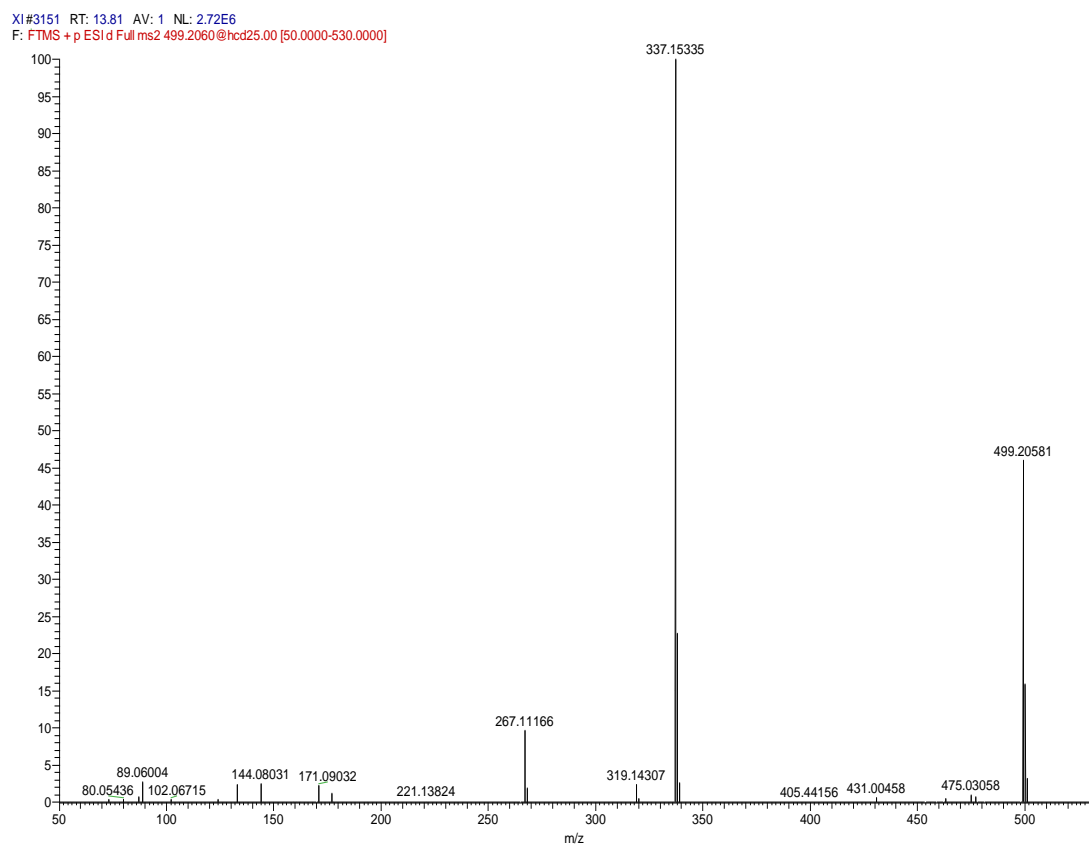
**Figure S10** The  $^{13}\text{C}$  NMR spectrum of compound **5**

7EPI#2970 RT: 13.02 AV: 1 NL: 1.19E7

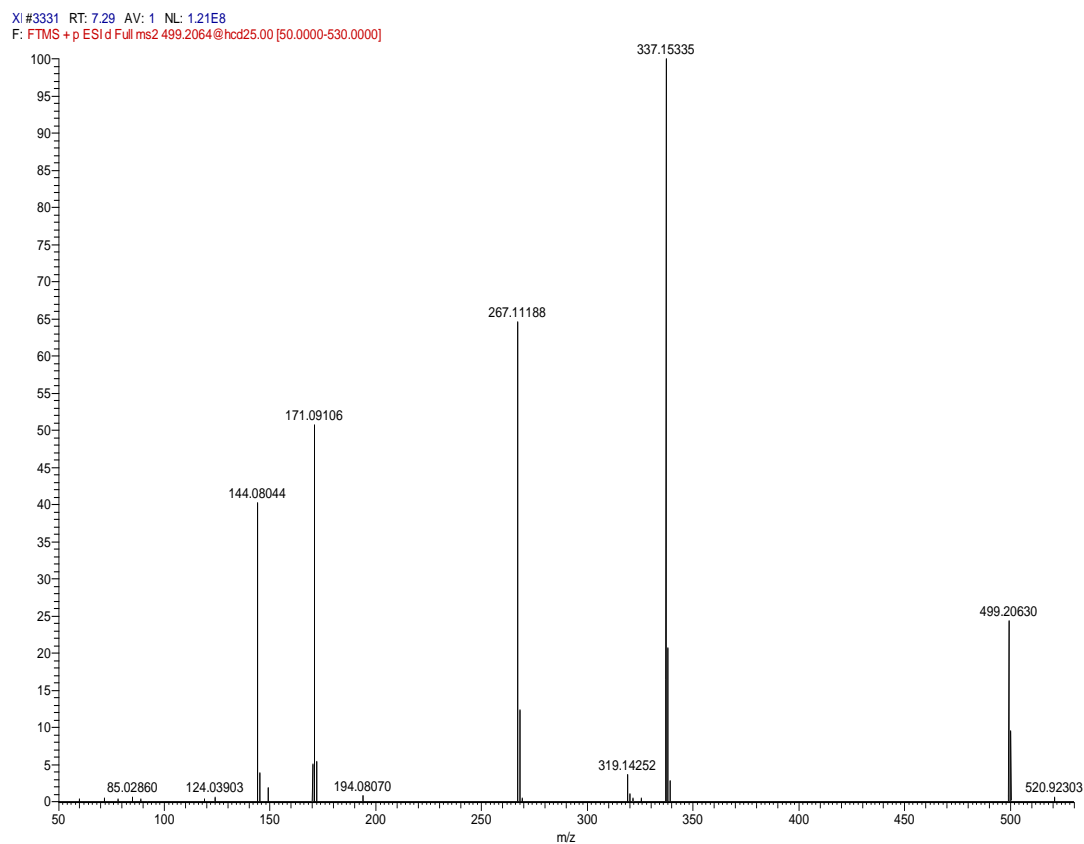
F: FTMS + p ESI d Full ms2 515.2010@hcd25.00 [50.0000-545.0000]



**Figure S11** The HR-ESI-MS of compound **1**

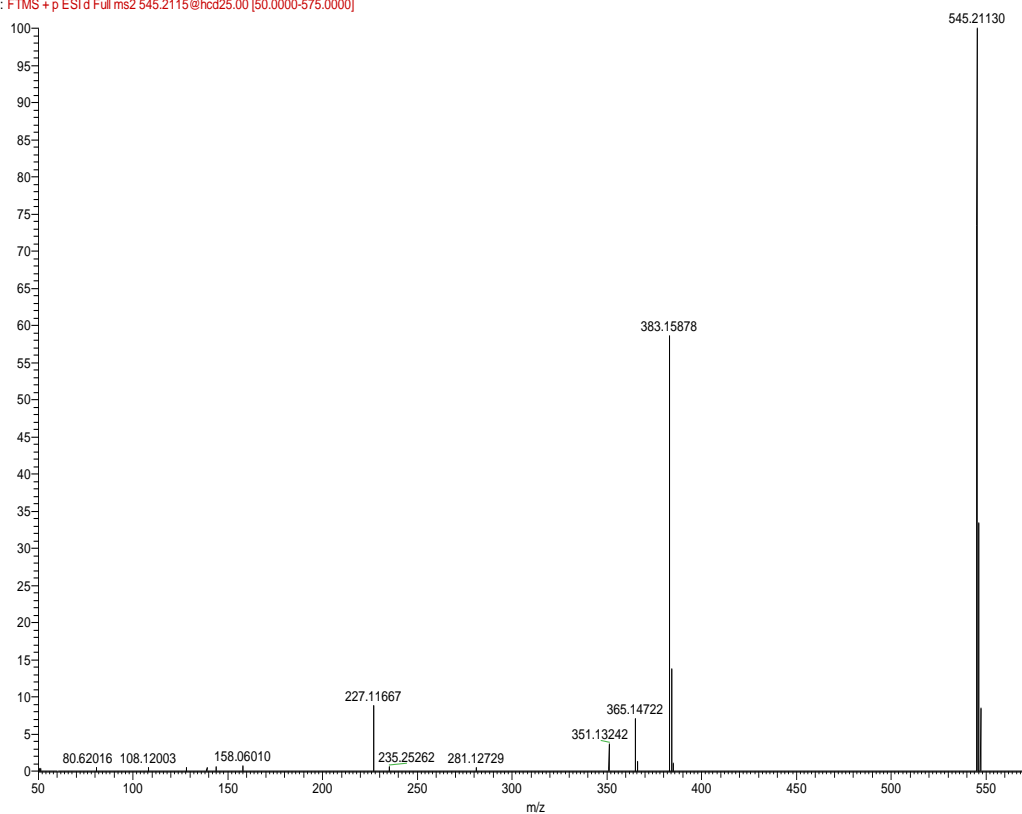


**Figure S12** The HR-ESI-MS of compound 2



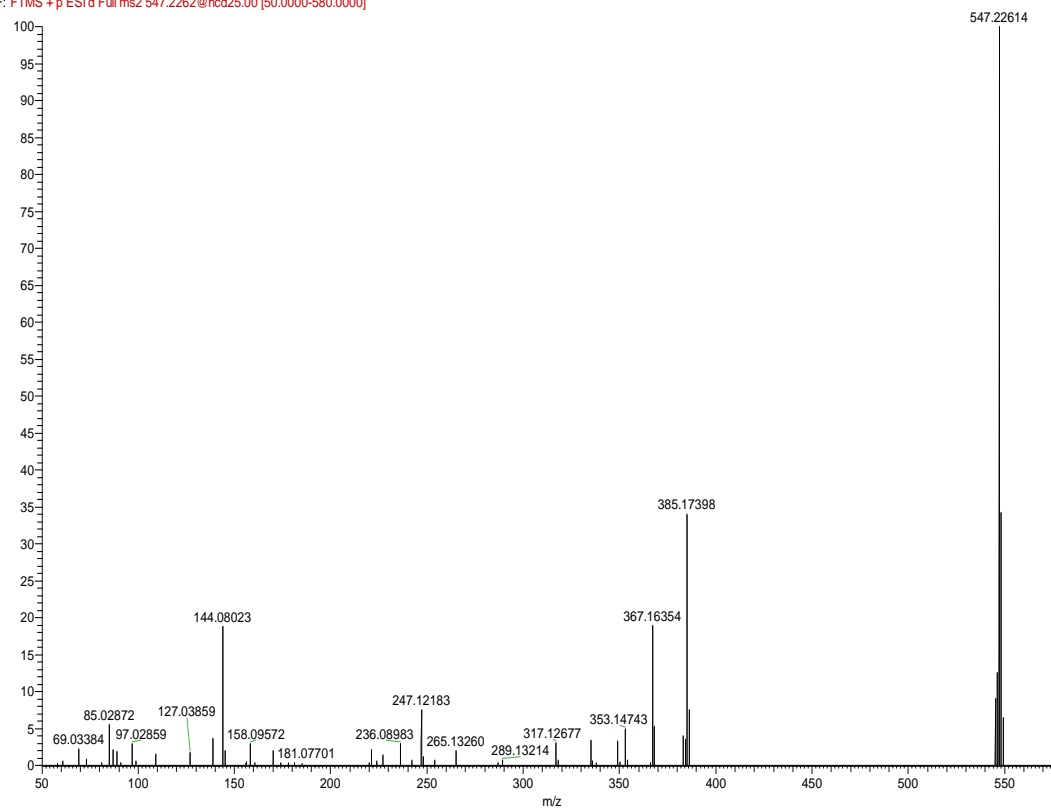
**Figure S13** The HR-ESI-MS of compound 3

CA #947 RT: 3.86 AV: 1 NL: 7.78E6  
F: FTMS + p ESI d Full ms2 545.2115@hcd25.00 [50.0000-575.0000]



**Figure S14** The HR-ESI-MS of compound **4**

SAN #4453 RT: 17.38 AV: 1 NL: 1.90E6  
F: FTMS + p ESI d Full ms2 547.2262@hcd25.00 [50.0000-580.0000]



**Figure S15** The HR-ESI-MS of compound **5**



