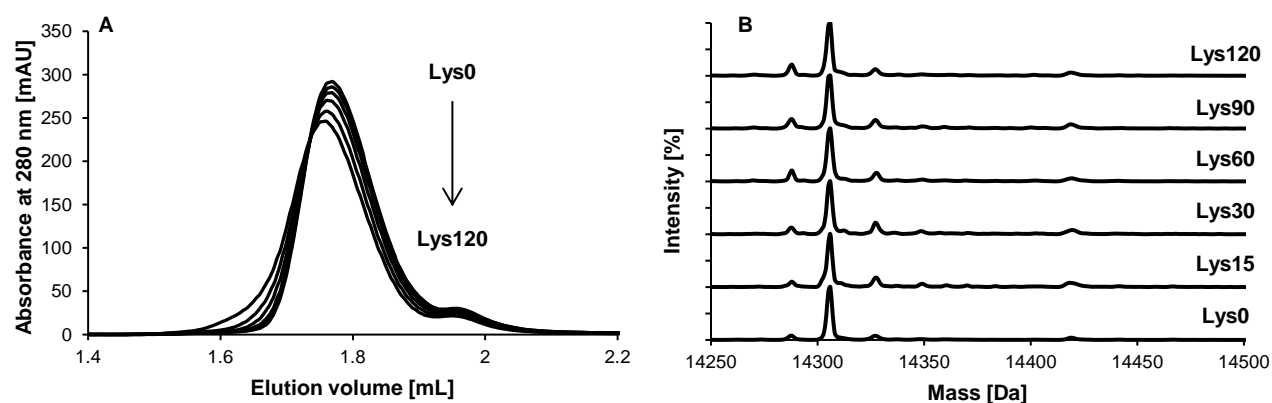
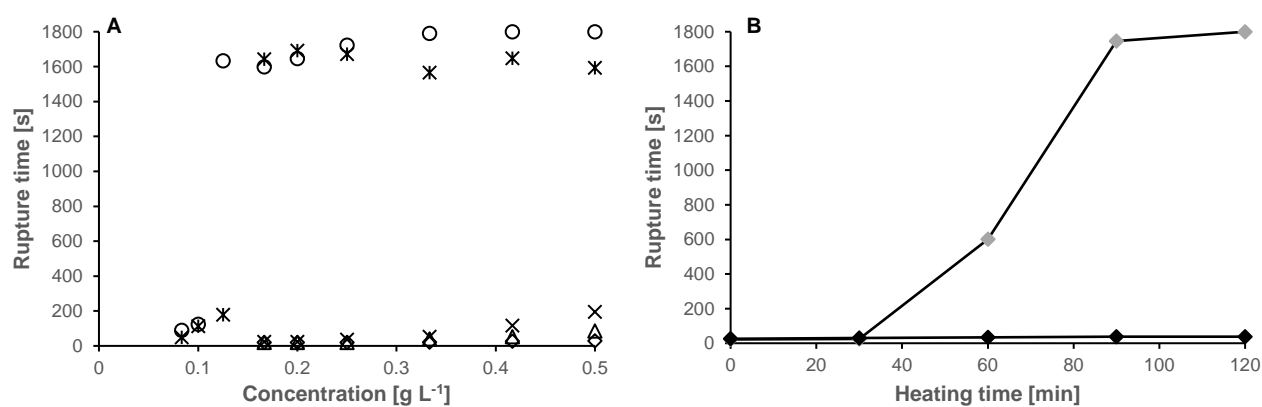


## Supplementary information



**Figure S1.** Size-exclusion chromatogram (A) and mass spectra (B) of the (un-)heated lysozyme variants.



**Figure S2.** Thin liquid film rupture times (after 5 minutes aging) as a function of concentration for (un-)heated lysozyme; 0 (◇), 30 (△), 60 (×), 90 (\*) and 120 minutes (○; A) and thin liquid film rupture times (after 20 minutes aging) for (un-)heated lysozyme at 0.25 g L<sup>-1</sup> before (◇) and after (◆) exchange of the interior protein solution with buffer (B) (10 mM sodium phosphate buffer pH 5.7, 25 °C). The lines in panel B are guides to the eye. It should be noted that these lysozyme variants are heated at 75 °C rather than 77 °C.