

---

## Supplementary Information

# An Enhanced Photothermal Therapeutic Iridium Hybrid Platform Reversing the Tumor Hypoxic Microenvironment

Hang Zhang <sup>1</sup>, Xiaoxiao Chen <sup>1</sup>, Shengliang Li <sup>2</sup>, Jianliang Shen <sup>3,4,\*</sup> and Zong-Wan Mao <sup>1,\*</sup>

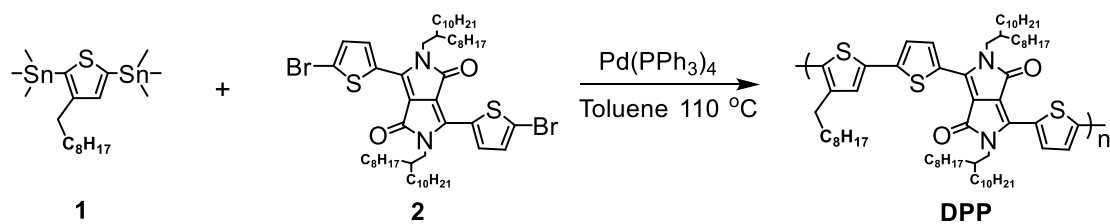
<sup>1</sup> MOE key Laboratory of Bioinorganic and Synthetic Chemistry, School of Chemistry, Sun Yat-Sen University, Guangzhou, 510275, China; zhangh5@mail2.sysu.edu.cn (H. Z.); chenxx265@mail2.sysu.edu.cn (X. C.)

<sup>2</sup> College of Pharmaceutical Sciences, Soochow University, Suzhou 215123, China; lishengliang@iccas.ac.cn (S. L.)

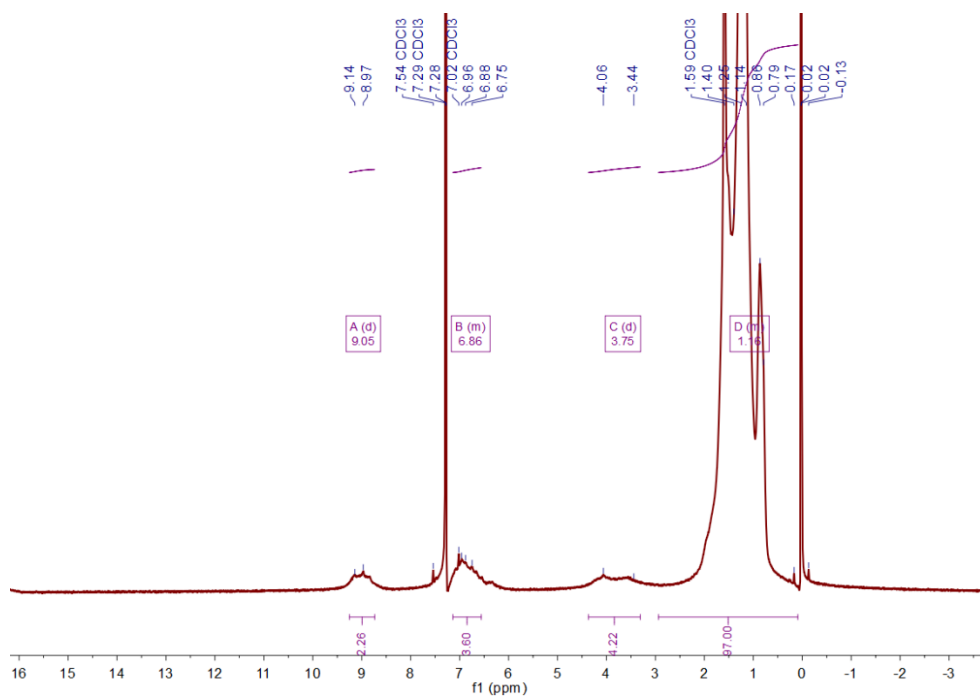
<sup>3</sup> State Key Laboratory of Ophthalmology, Optometry and Vision Science, School of Ophthalmology and Optometry, School of Biomedical Engineering, Wenzhou Medical University, Wenzhou 325027, China

<sup>4</sup> Wenzhou Institute, University of Chinese Academy of Sciences, Wenzhou 325001, China

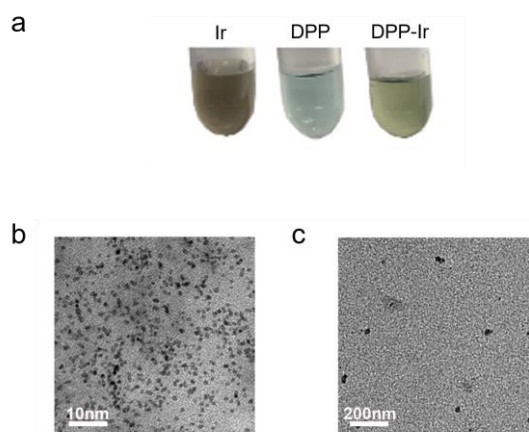
\* Correspondence: cesmzw@mail.sysu.edu.cn (Z.-W. M.), shenjl@wiucas.ac.cn (J. S.)



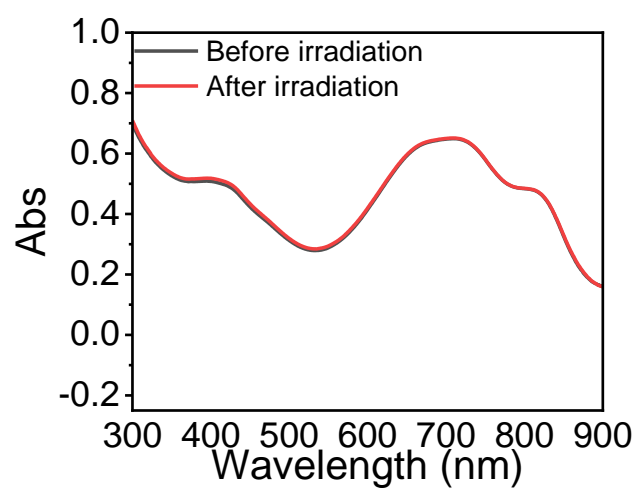
**Figure S1.** Synthetic route of DPP polymer.



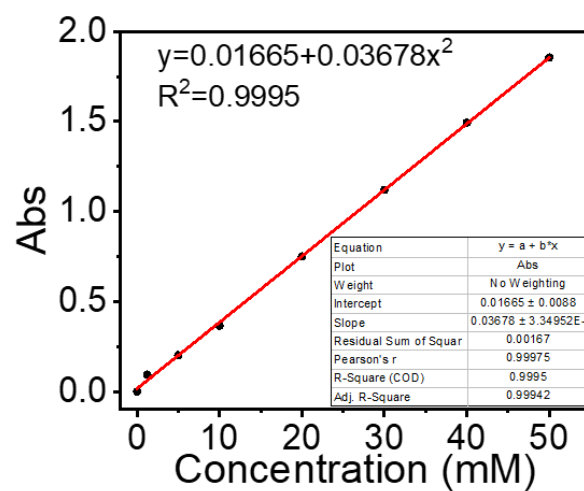
**Figure S2.**  $^1\text{H}$  NMR of DPP polymer in  $\text{CDCl}_3$ .



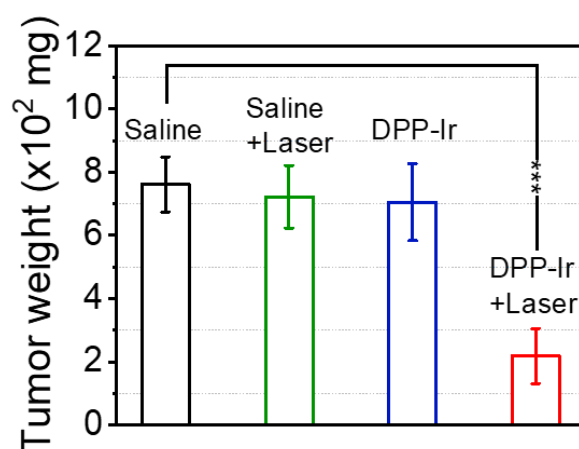
**Figure S3.** (a) Images of three different indicated nanoparticles in water. (b) TEM image of Ir nanoparticles. (c) TEM image of DPP nanoparticles.



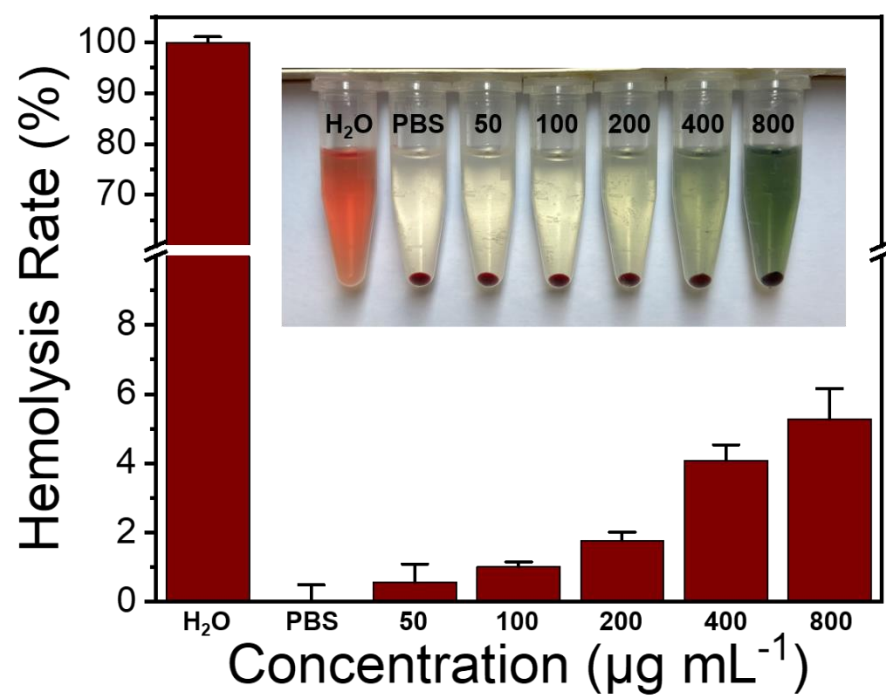
**Figure S4.** The absorption spectra of DPP-Ir nanoparticles before and after irradiation.



**Figure S5.** Linear regression equation of H<sub>2</sub>O<sub>2</sub> standard curve.



**Figure S6.** Tumor weight changes after variously indicated treatments. \*\*\* p<0.001.



**Figure S7.** Hemolytic tests after incubation with DPP-Ir nanoparticles for 3 h.