

Encapsulating *Calendula arvensis* (Vail.) L. Florets: UHPLC-HRMS Insights into Bioactive Compounds Preservation and Oral Bioaccessibility

Marika Fiorentino ¹, Simona Piccolella ¹, Claudia Gravina ¹, Adriano Stinca ¹, Assunta Esposito ^{1,*}, Michelina Catauro ², Severina Pacifico ^{1,*}

¹ Department of Environmental, Biological and Pharmaceutical Sciences and Technologies, University of Campania "Luigi Vanvitelli" Via Vivaldi, 43 81100 Caserta; marika.fiorentino@unicampania.it (M.F.); simona.piccolella@unicampania.it (S.P.); claudia.gravina@unicampania.it (C.G.); adriano.stinca@unicampania.it (A.S.); assunta.esposito@unicampania.it (A.E.); severina.pacifico@unicampania.it (S.P.)

² Department of Engineering, University of Campania "Luigi Vanvitelli", Via Roma 29, I-813031, Aversa, Italy michelina.catauro@unicampania.it

Correspondence: severina.pacifico@unicampania.it; assunta.esposito@unicampania.it

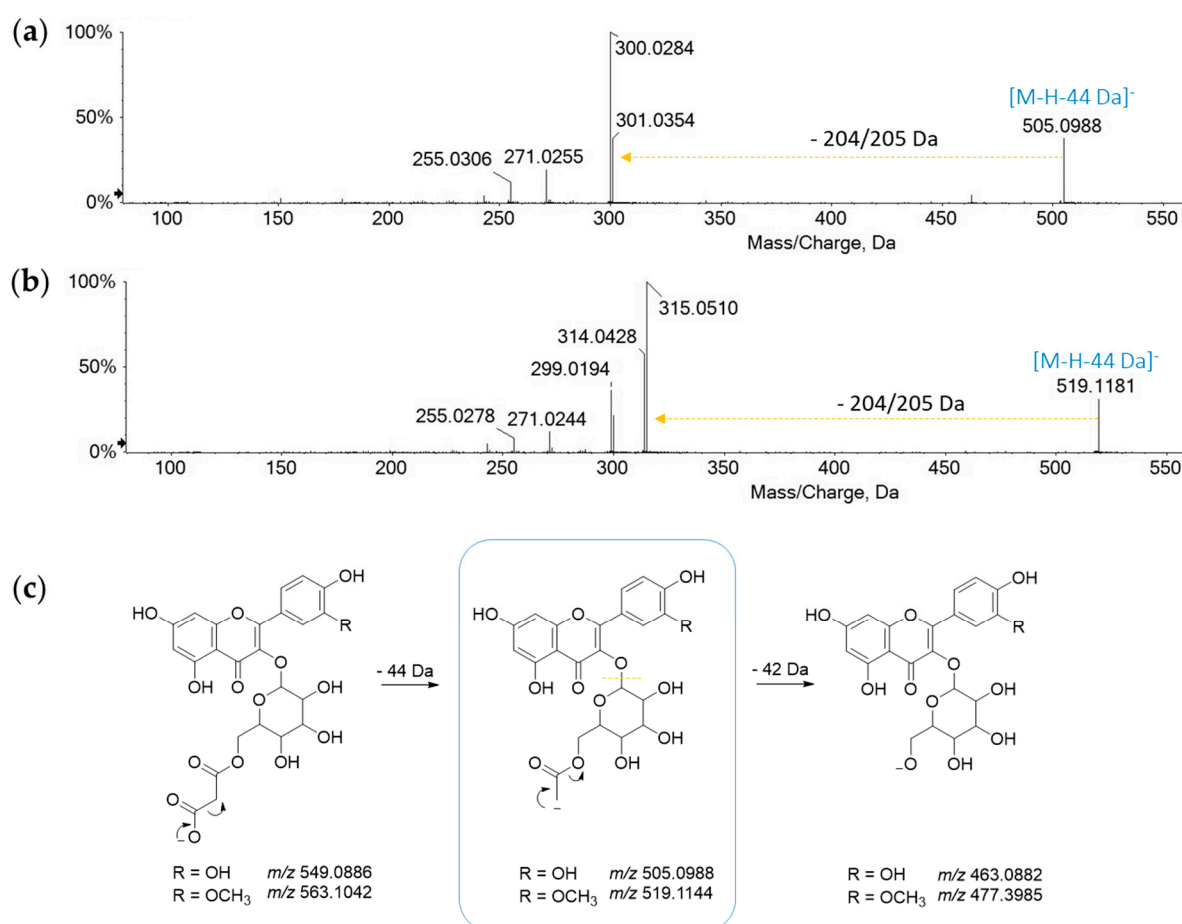


Figure S1. TOF-MS/MS spectra of compounds (a) 12 and (b) 20, and (c) their fragmentation pathways.

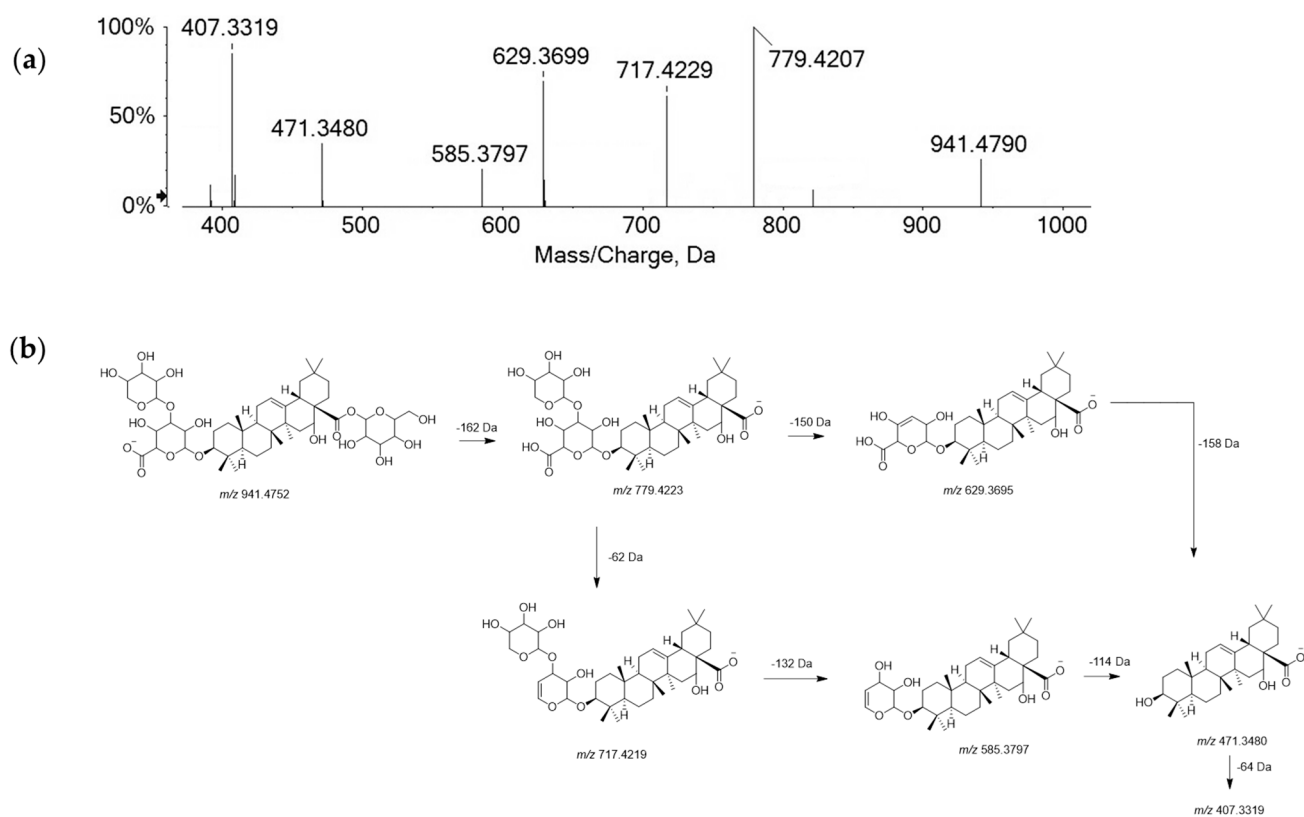


Figure S2. (a) TOF-MS/MS spectrum of compound **21**; (b) its hypothesized fragmentation pathway.

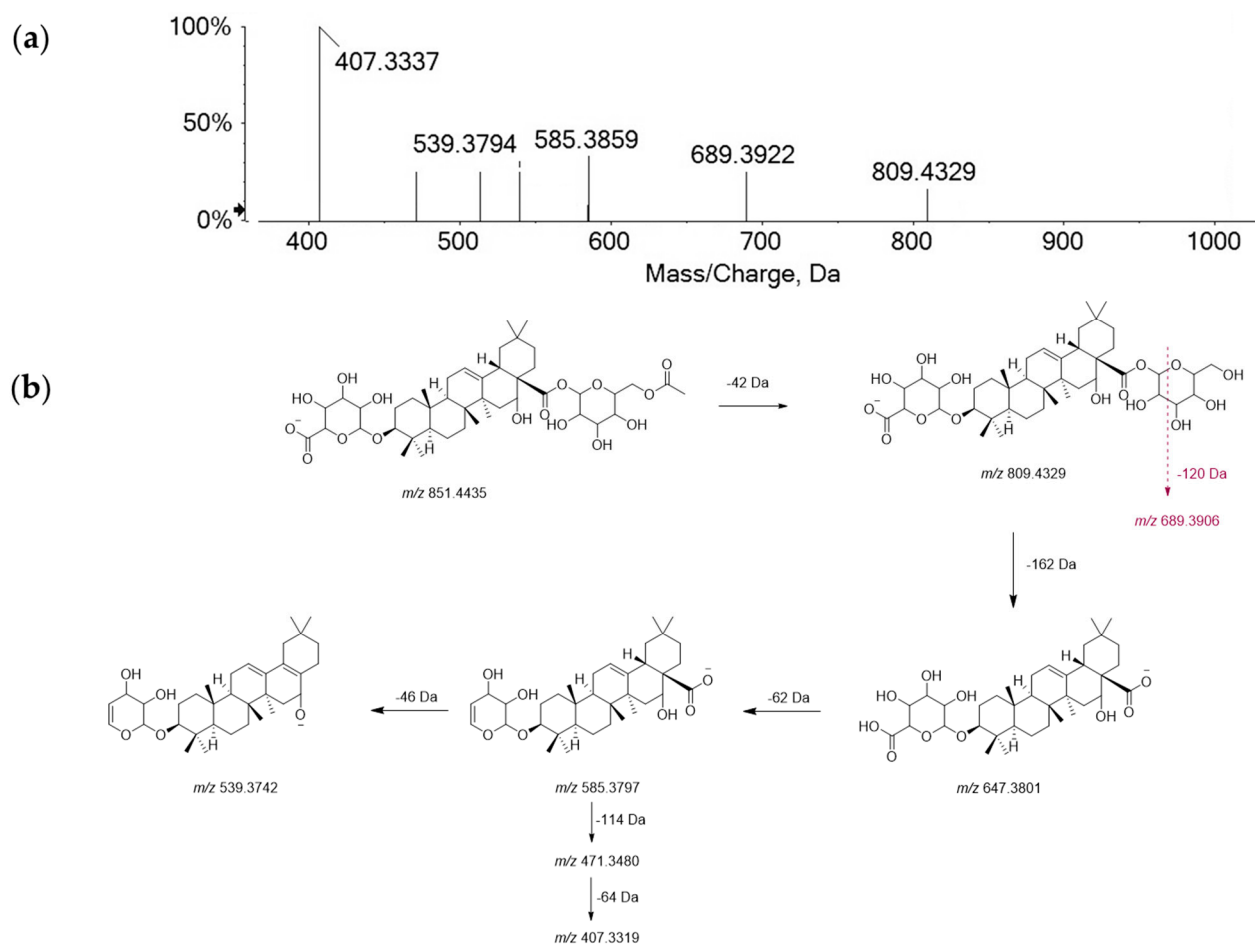


Figure S3. (a) TOF-MS/MS spectrum of compound **25**; (b) its hypothesized fragmentation pathway.

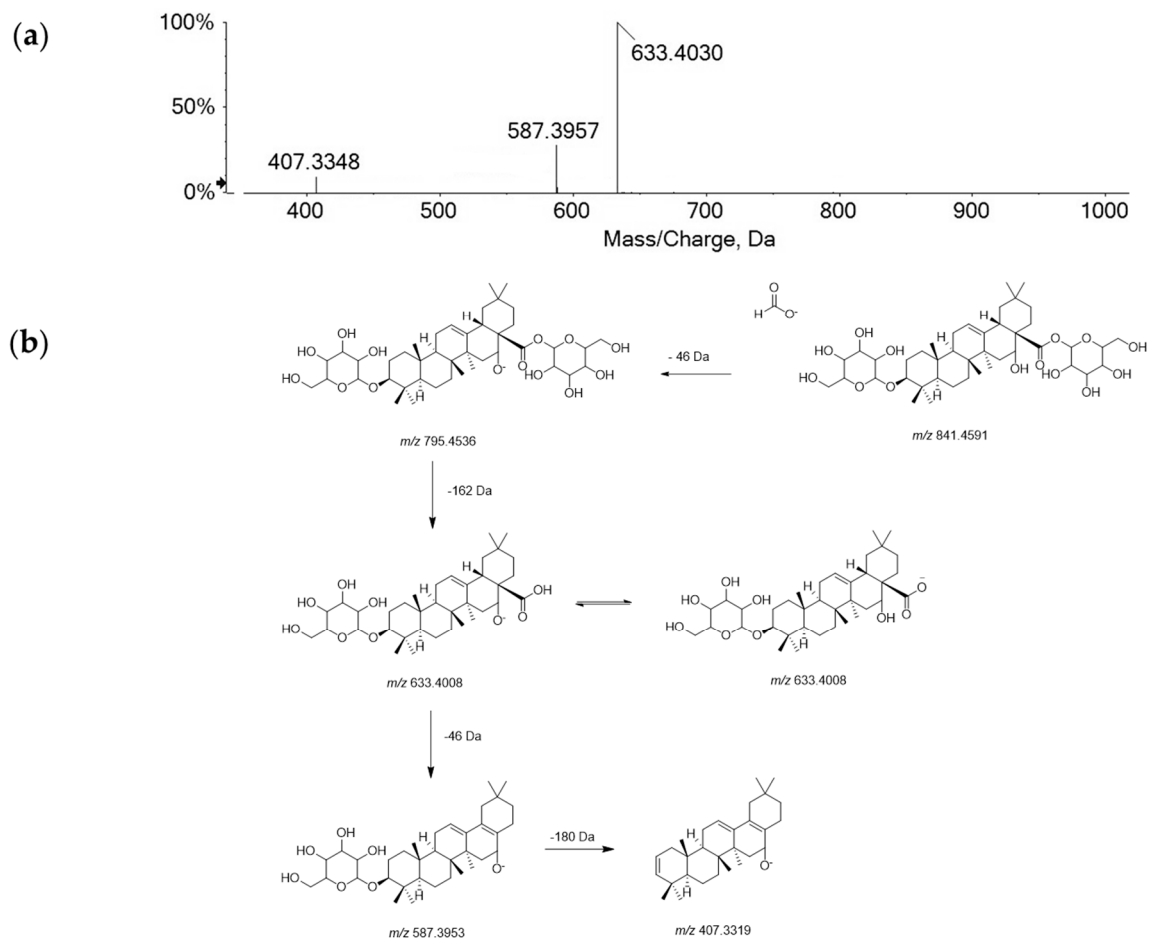


Figure S4. (a) TOF-MS/MS spectrum of compound **24**; (b) its hypothesized fragmentation pathway.

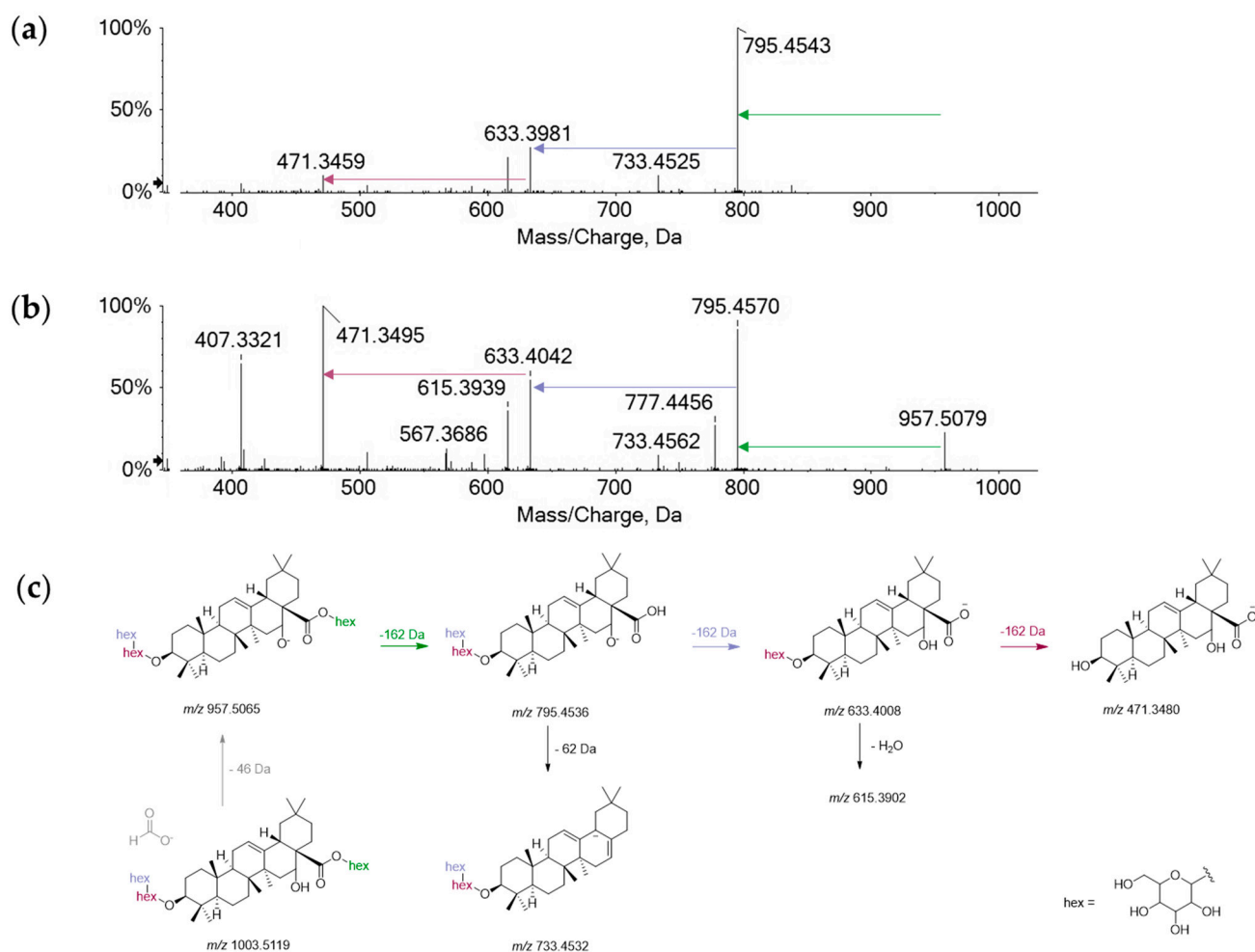
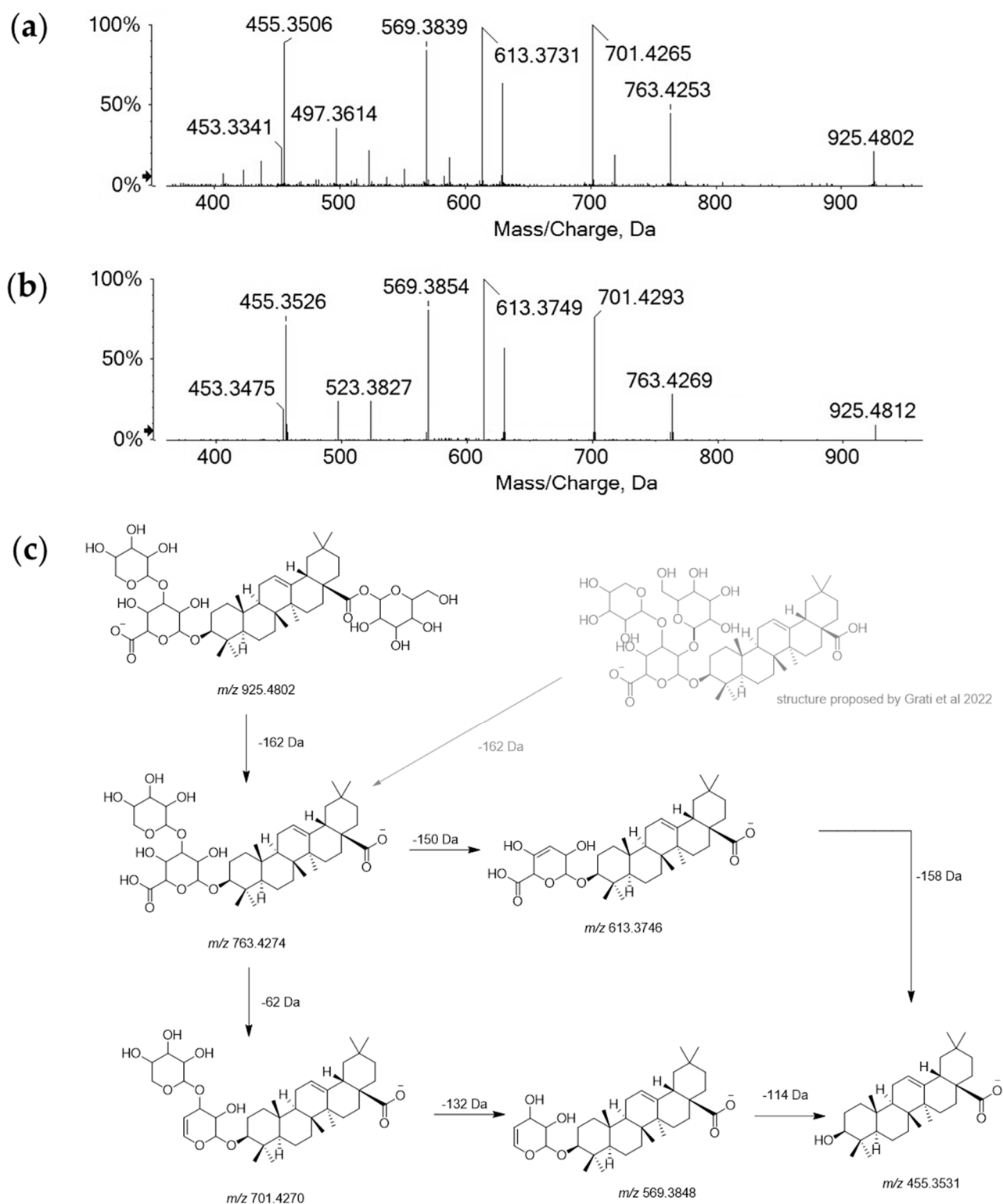


Figure S5. TOF-MS/MS spectra of compounds (a) **22** and (b) **28**, and (c) the putative fragmentation pathway.



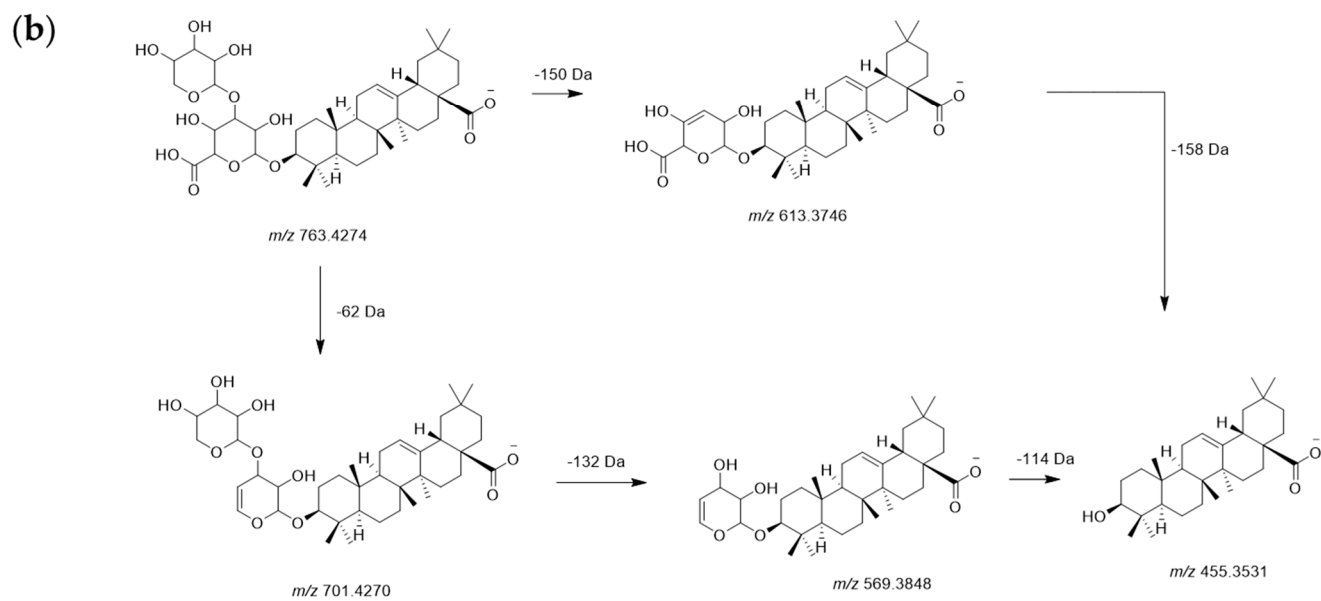
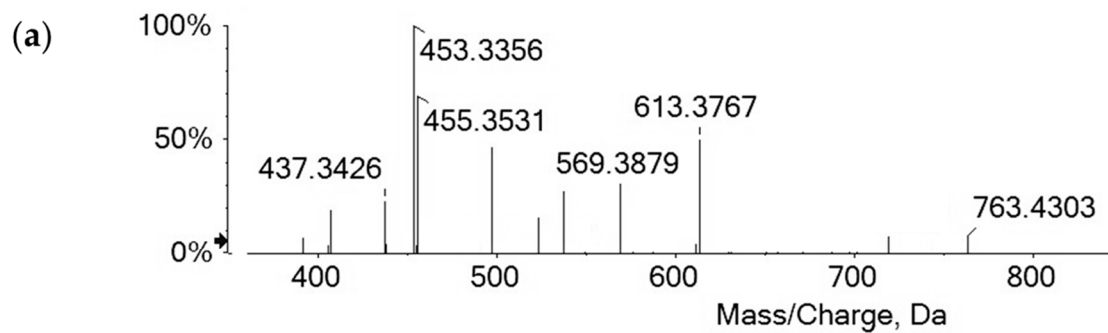


Figure S7. (a) TOF-MS/MS spectrum of compound 37; (b) its hypothesized fragmentation pathway.

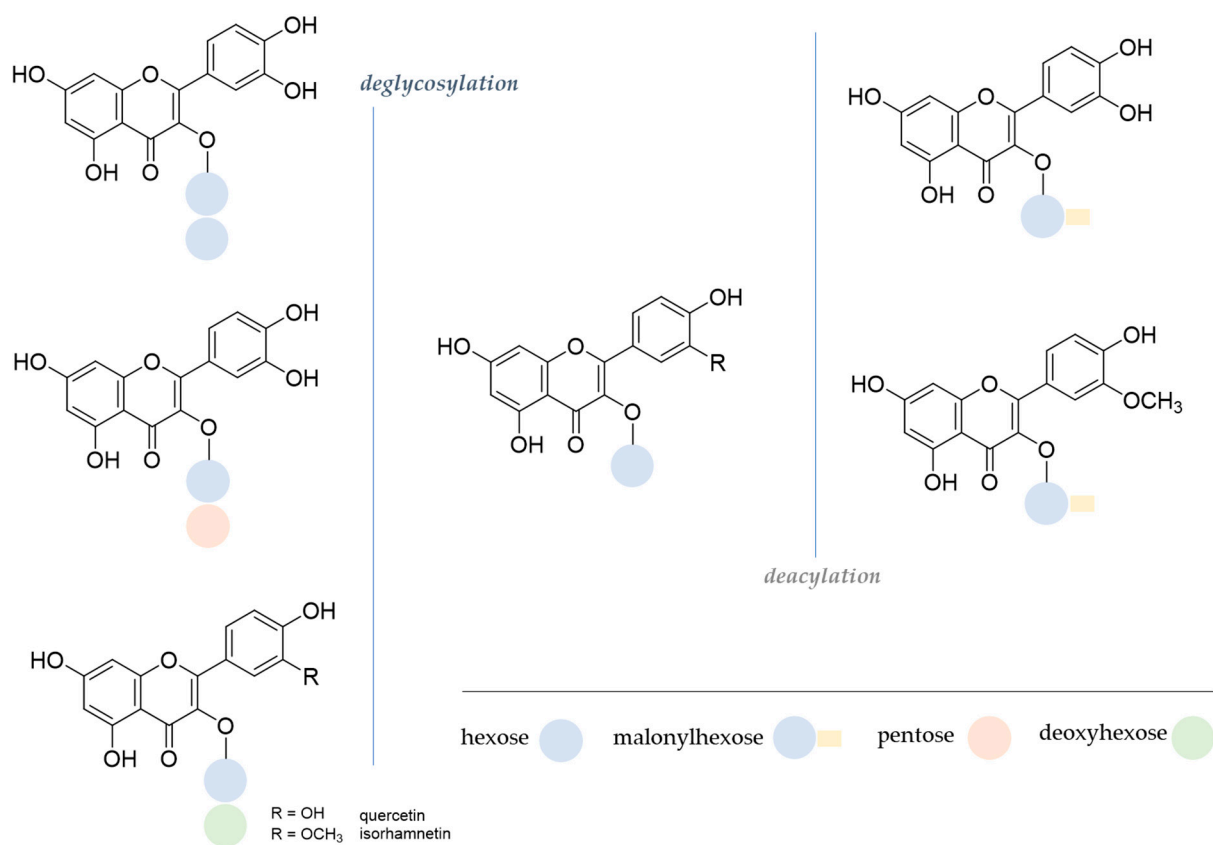


Figure S8. Proposed biotransformation pattern for glycosylated flavonols *during in vitro simulated digestion*.