

Supporting Information

Synthesis and Antiproliferative activity against cancer cells of Indole-Aryl-Amide Derivatives

Junwei Zhao,¹ Jacopo Carbone,¹ Giovanna Farruggia², Anna Janecka,³ Luca Gentilucci,^{1, *} Natalia Calonghi.^{2, *}

¹ Department of Chemistry "G. Ciamician", University of Bologna, Via Selmi 2, 40126-Bologna, Italy; juwzhao@ucdavis.edu (J.Z.), jacopo.carbone2@studio.unibo.it (J.C.)

² Department of Pharmacy and Biotechnology (FaBiT), University of Bologna, Via Irnerio 48, 40126 Bologna, Italy; giovanna.farruggia@unibo.it (GF)

³ Department of Biomolecular Chemistry, Medical University of Lodz, Mazowiecka 6/8, 92-215 Lodz, Poland; anna.janecka@umed.lodz.pl (AJ).

* Correspondence: luca.gentilucci@unibo.it (L.G.); natalia.calonghi@unibo.it (N.C.);
Tel: +39-05-1209-9570 (L.G.); +39-05-1209-1231 (N.C.)

Table of Contents

Figures S1–S7. ¹ H NMR of 1–7 in CDCl ₃ , 400 MHz.	pS2
Figure S8. Alternative views of the binding poses of 2 and 5 in KOR	pS5

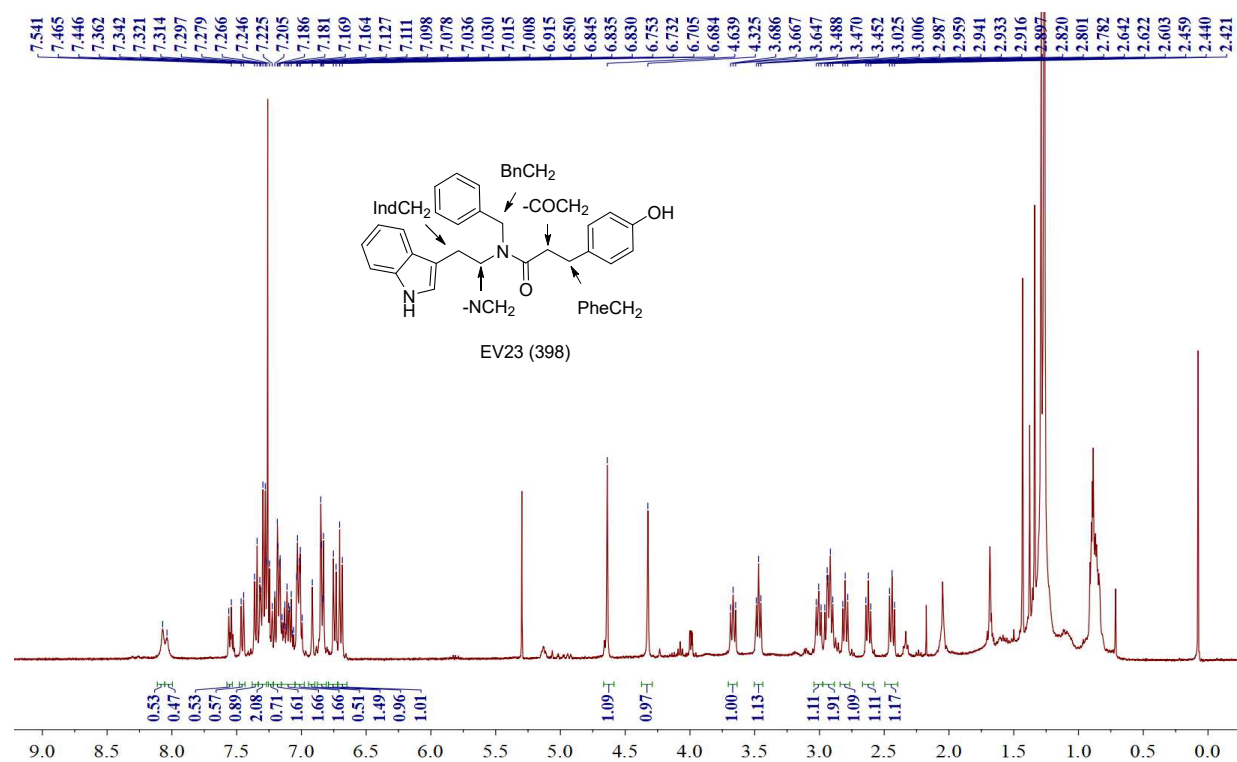


Figure S1. ^1H NMR of **1** in CDCl_3 , 400 MHz.

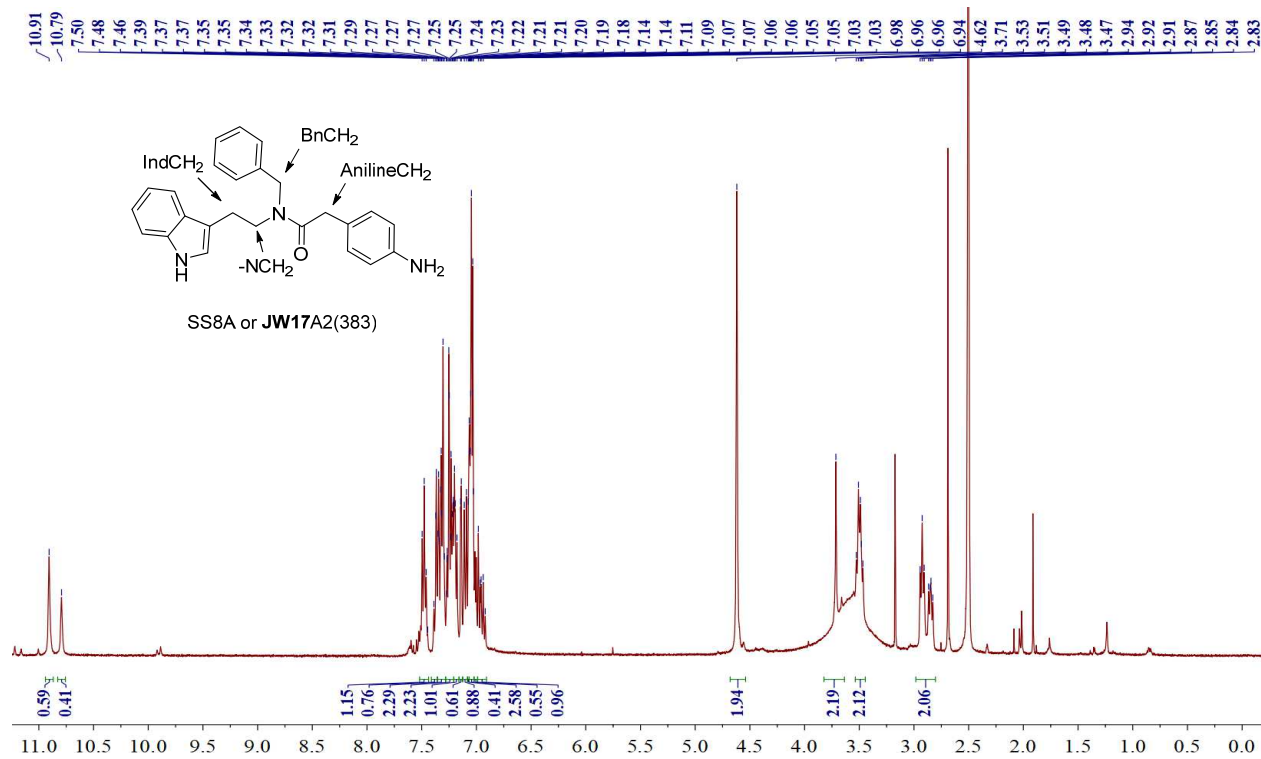
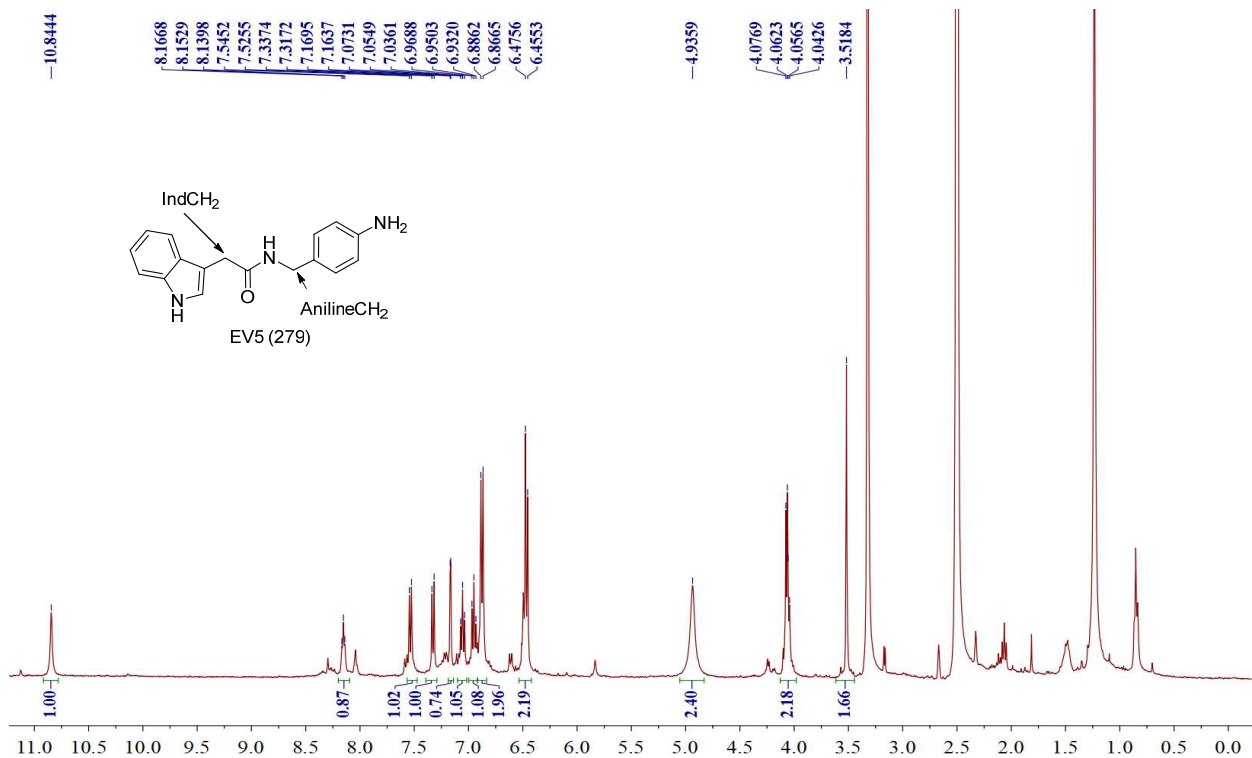
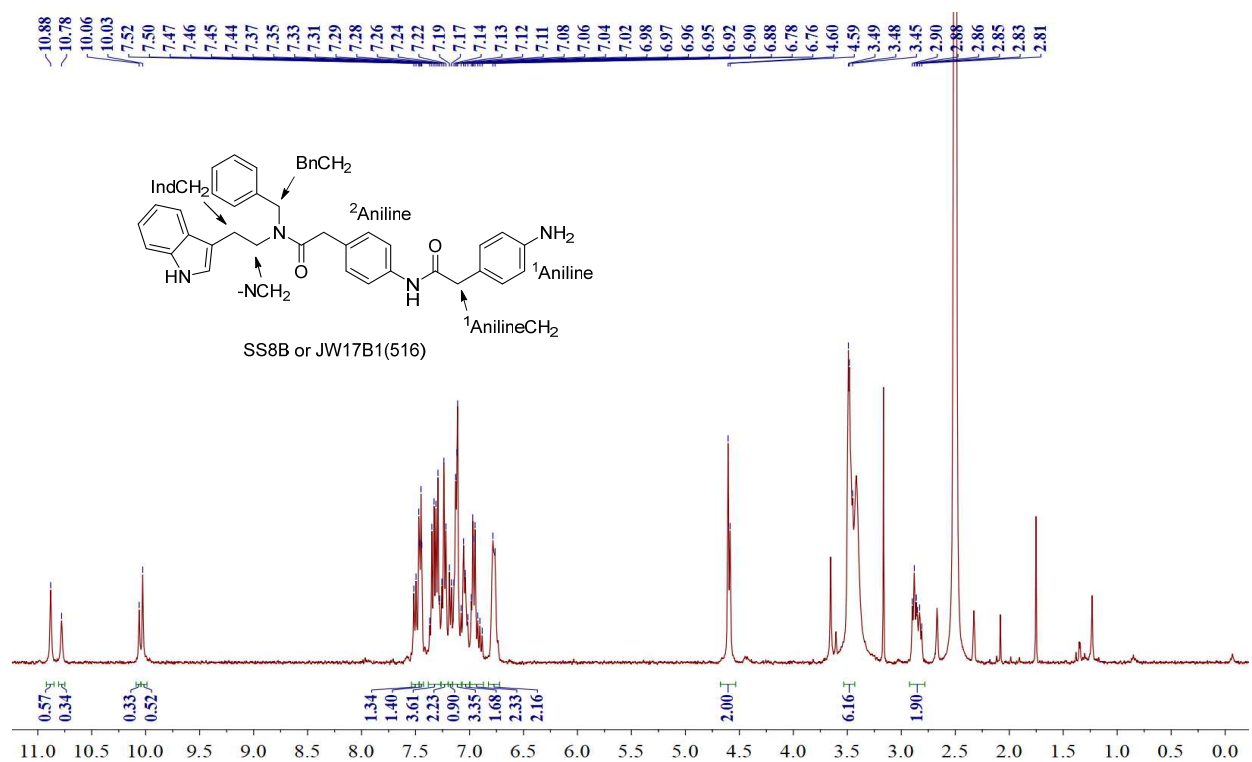


Figure S2. ^1H NMR of **2** in CDCl_3 , 400 MHz.



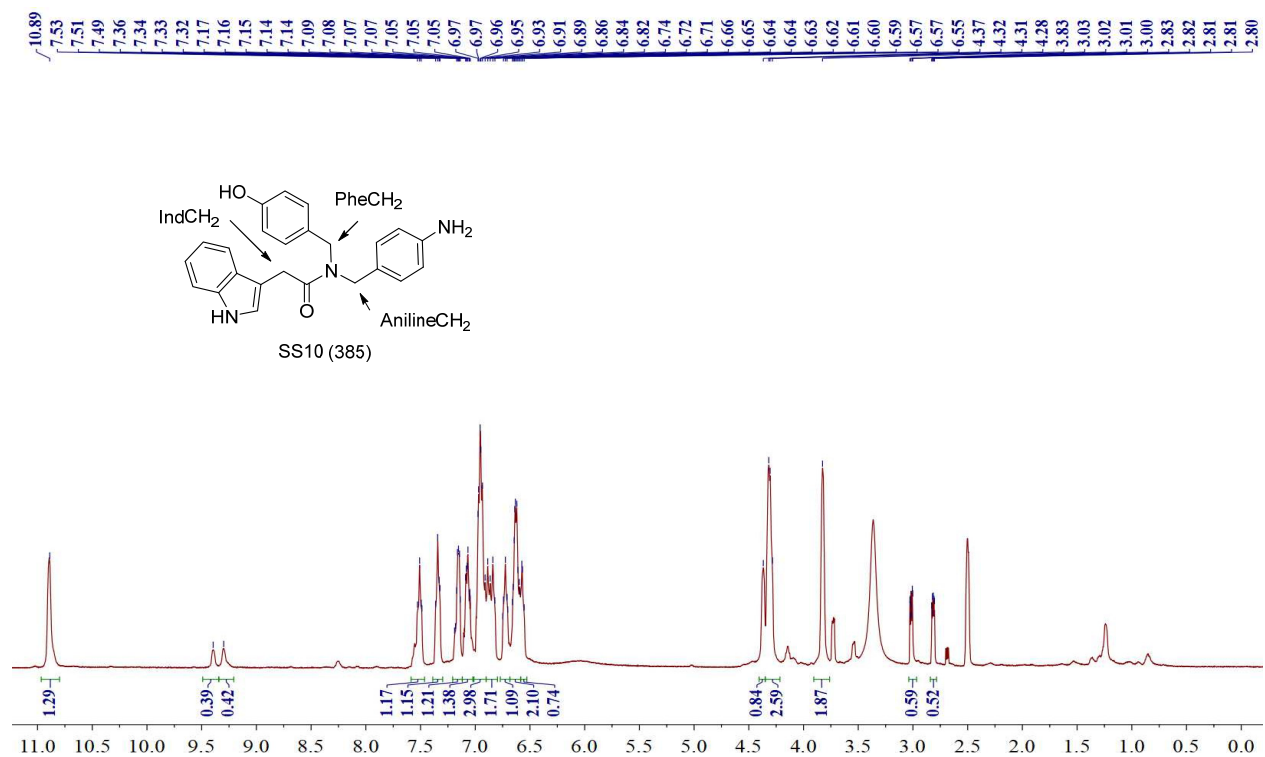


Figure S5. ¹H NMR of **5** in CDCl₃, 400 MHz.

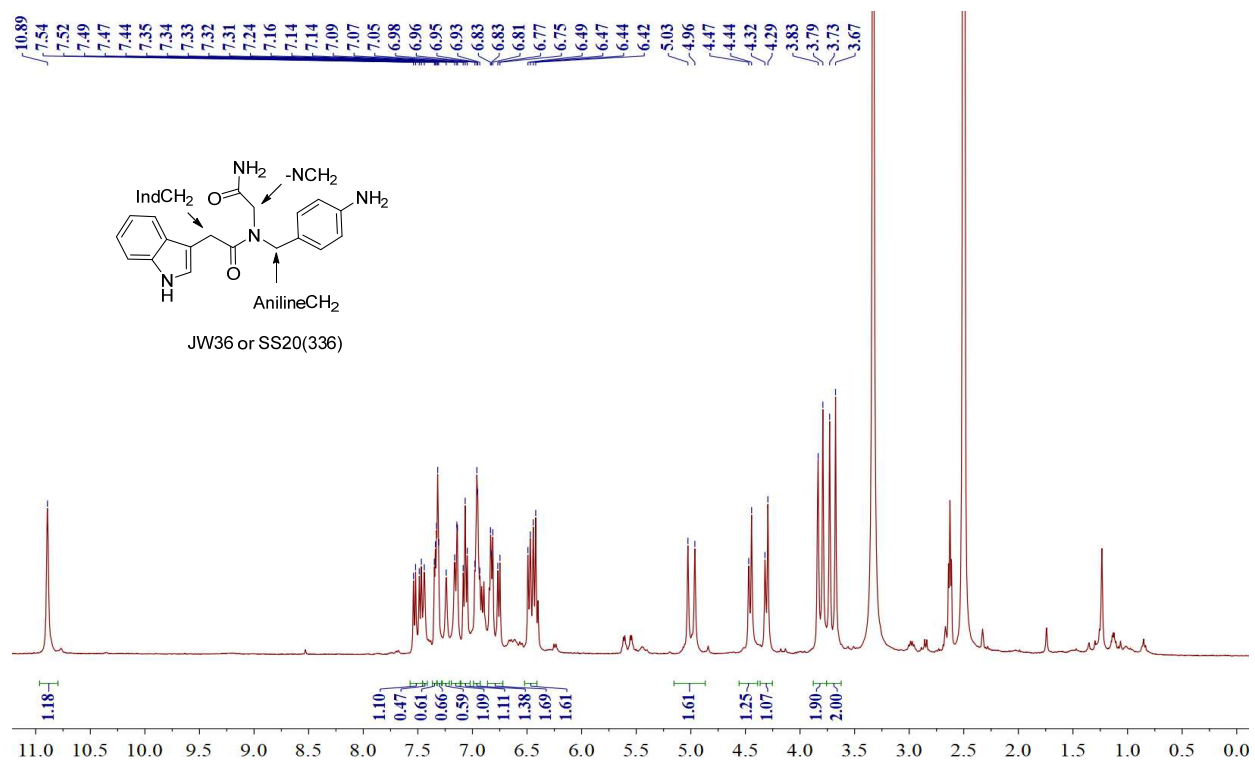


Figure S6. ¹H NMR of **6** in CDCl₃, 400 MHz.

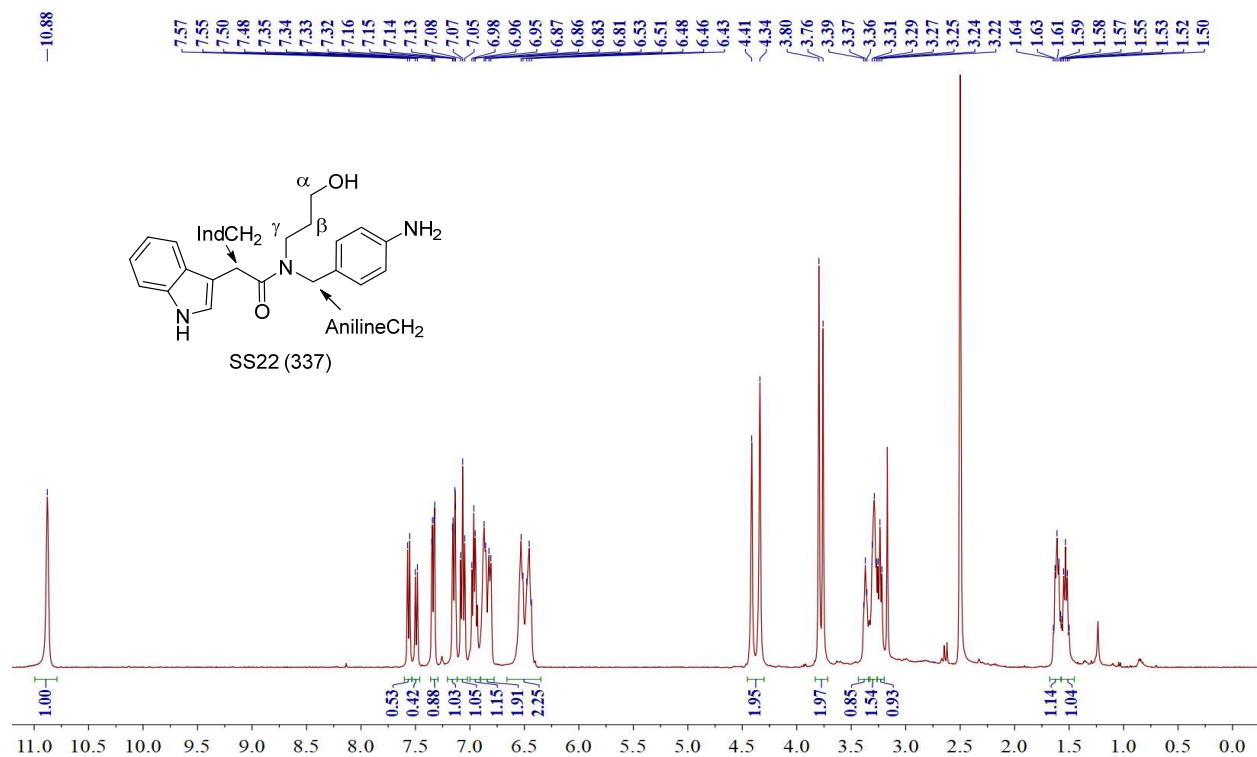


Figure S7. ^1H NMR of **7** in CDCl_3 , 400 MHz.

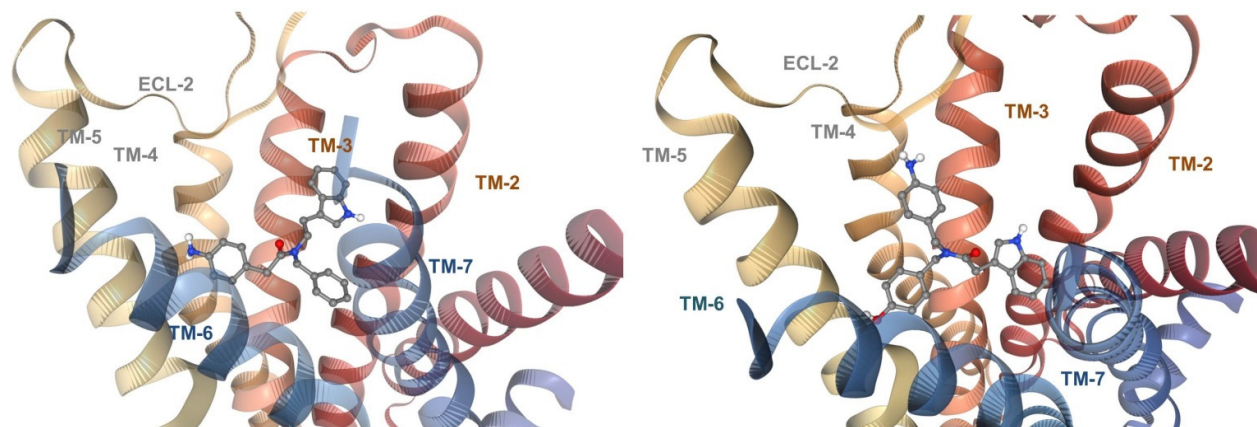


Figure S8. Top views of the predicted binding poses of **2** (left) and **5** (right) in KOR. The ligands are rendered in thick lines; C is rendered in grey, N in blue, and O in red. Figure obtained with PacDOCK web server (<https://pegasus.lbic.unibo.it/pacdock/>)