

# Supporting Information for

## Structure-Activity Relationship Studies on 6-Chloro-1-phenylbenzazepines Leads to the Identification of a New Dopamine D1 Receptor Antagonist

Rajan Giri <sup>1,2</sup>, Hari K. Namballa <sup>1</sup>, Vishwashiv Emogaje <sup>1</sup> and Wayne W. Harding <sup>1,2,3,\*</sup>

<sup>1</sup>*Department of Chemistry, Hunter College, City University of New York, 695 Park Avenue, NY 10065, USA*

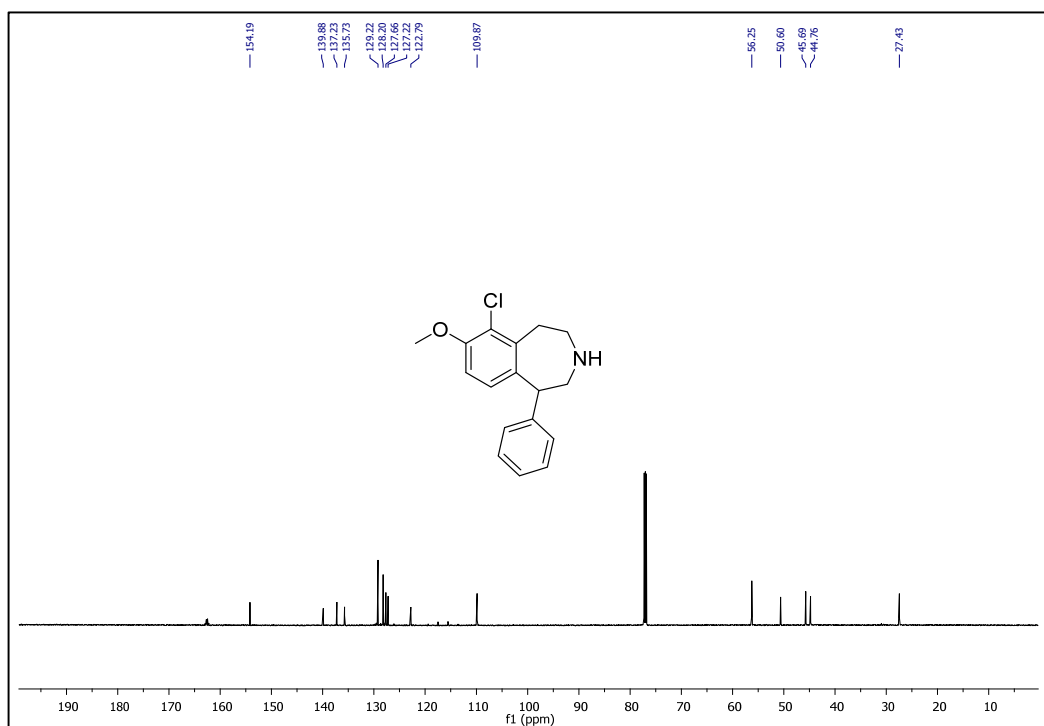
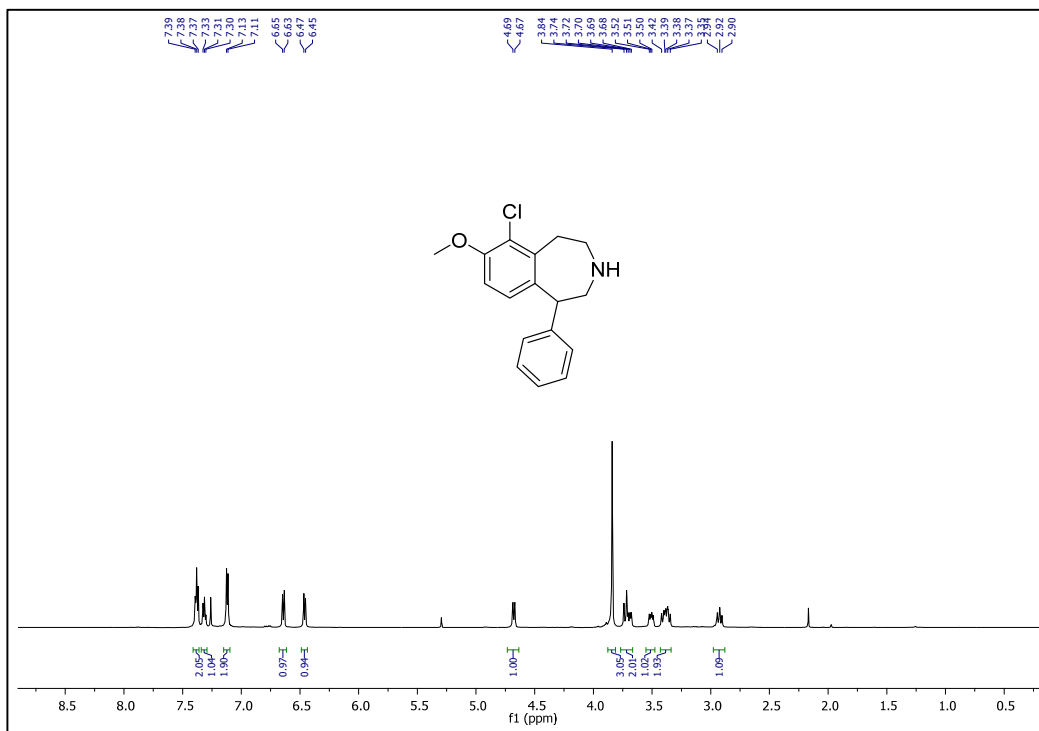
<sup>2</sup>*Program in Chemistry, CUNY Graduate Center, 365 5th Avenue, New York, NY 10016, USA*

<sup>3</sup>*Program in Biochemistry, CUNY Graduate Center, 365 5th Avenue, New York, NY 10016, USA*

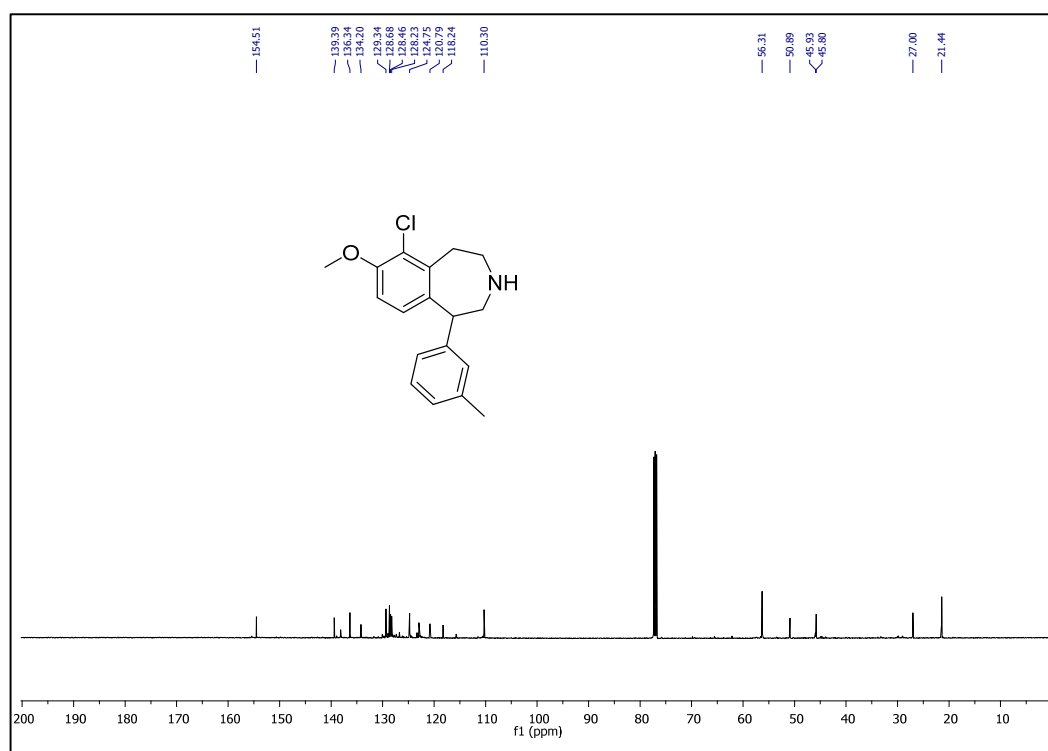
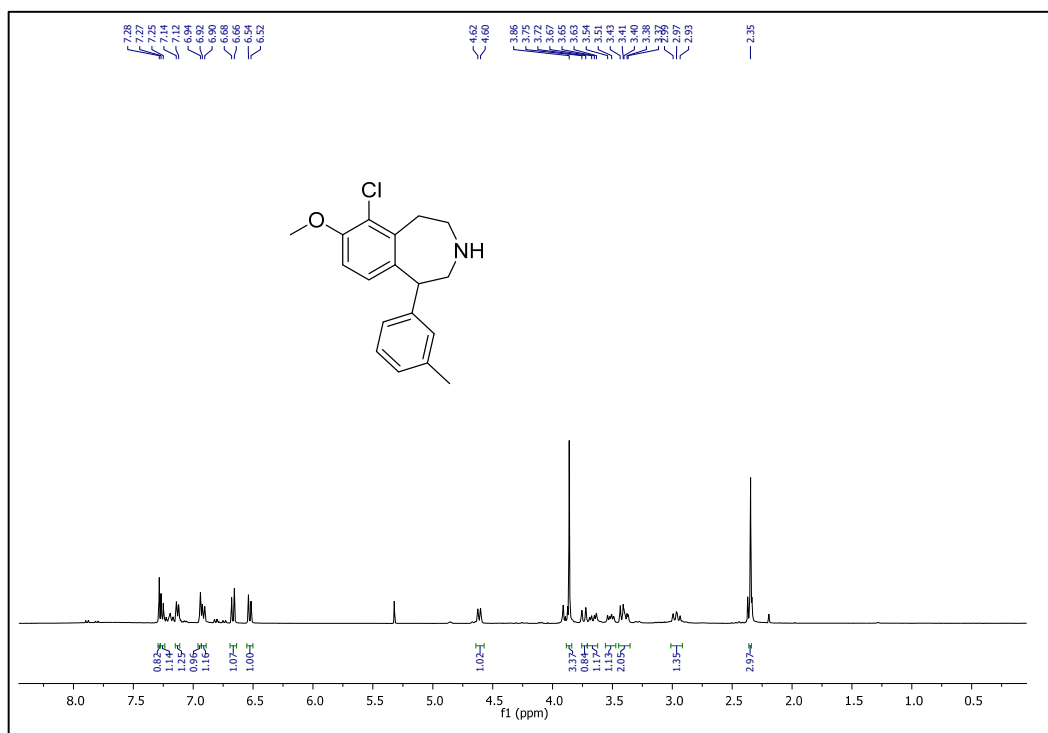
### Table of Contents:

1. <sup>1</sup> H NMR and <sup>13</sup> C NMR spectra	S2-S29
---	--------

# 10a

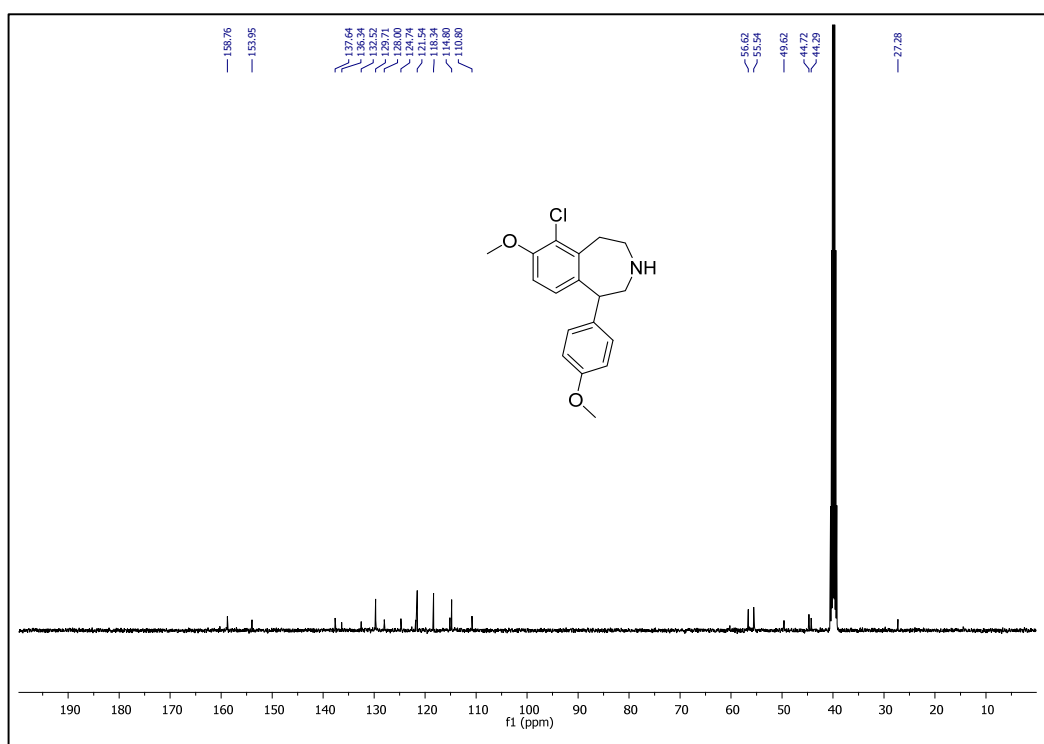
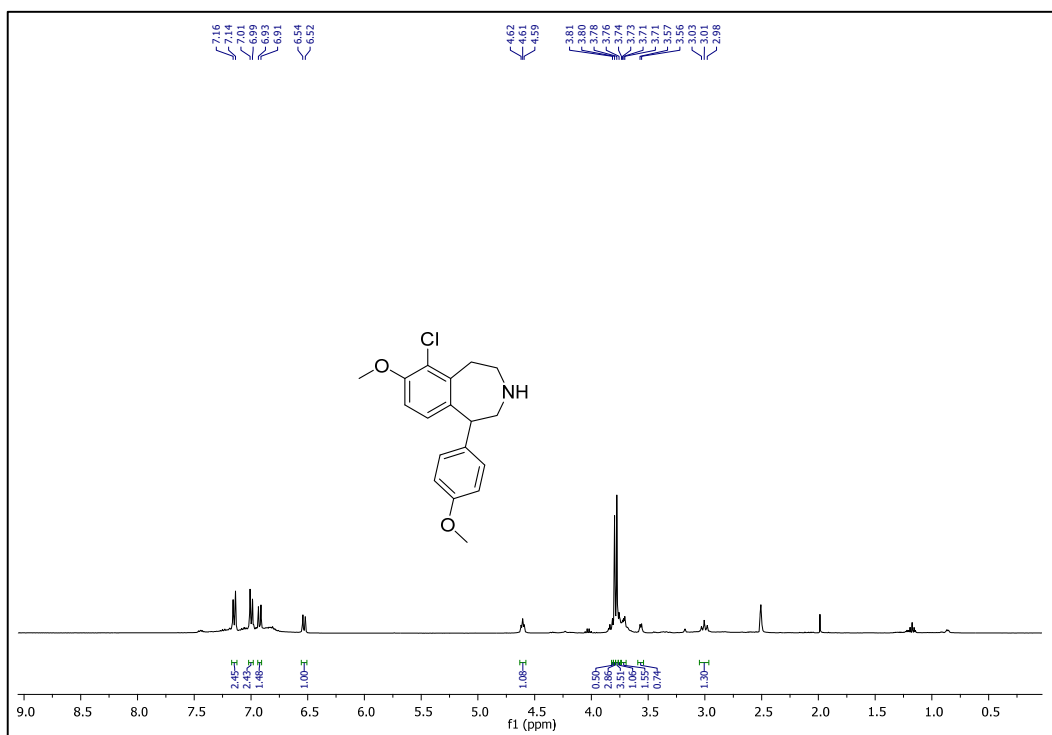


10b

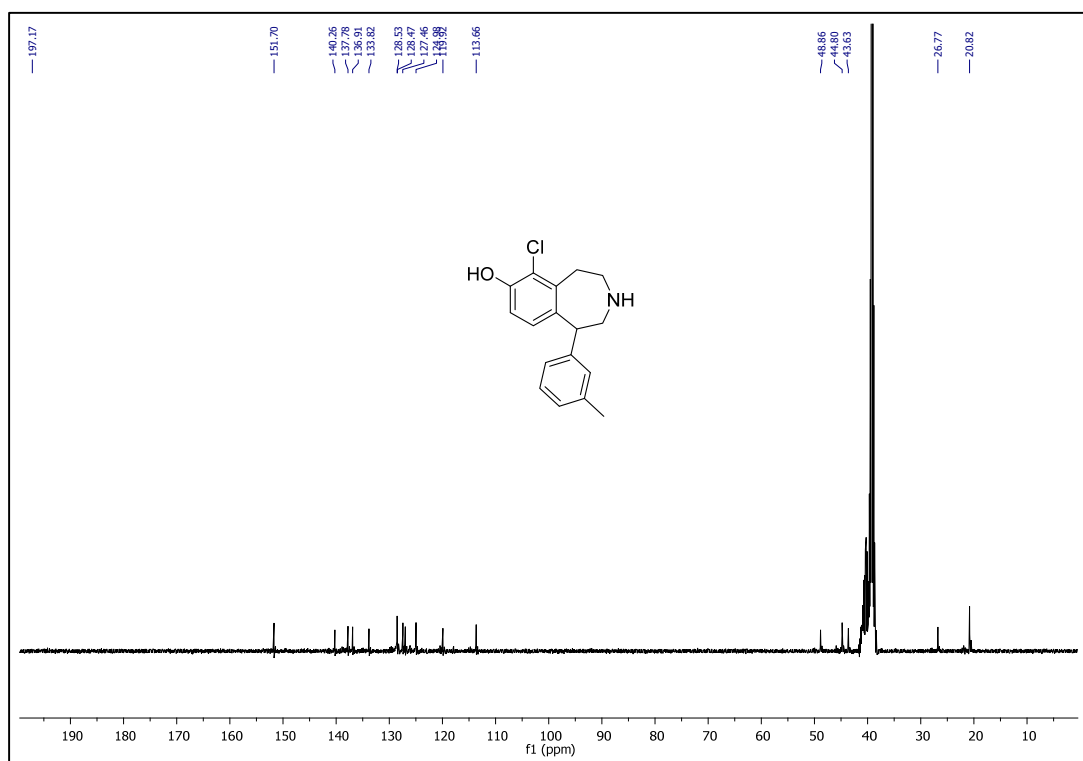
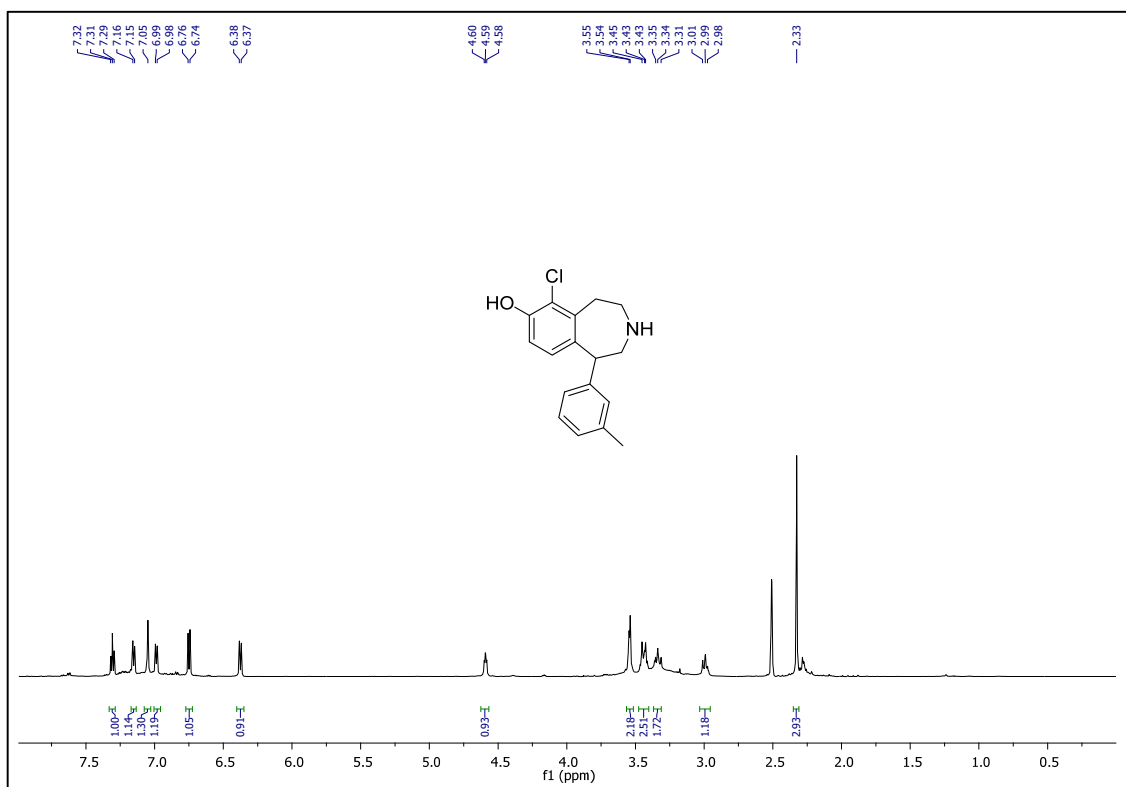


S3

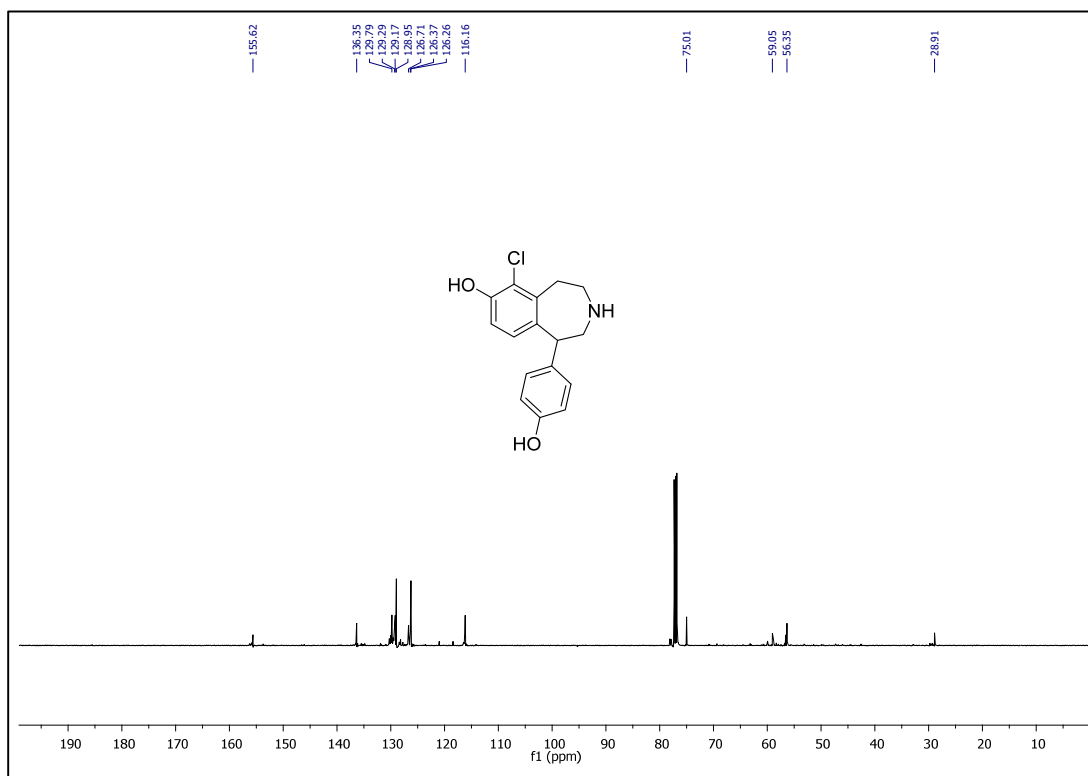
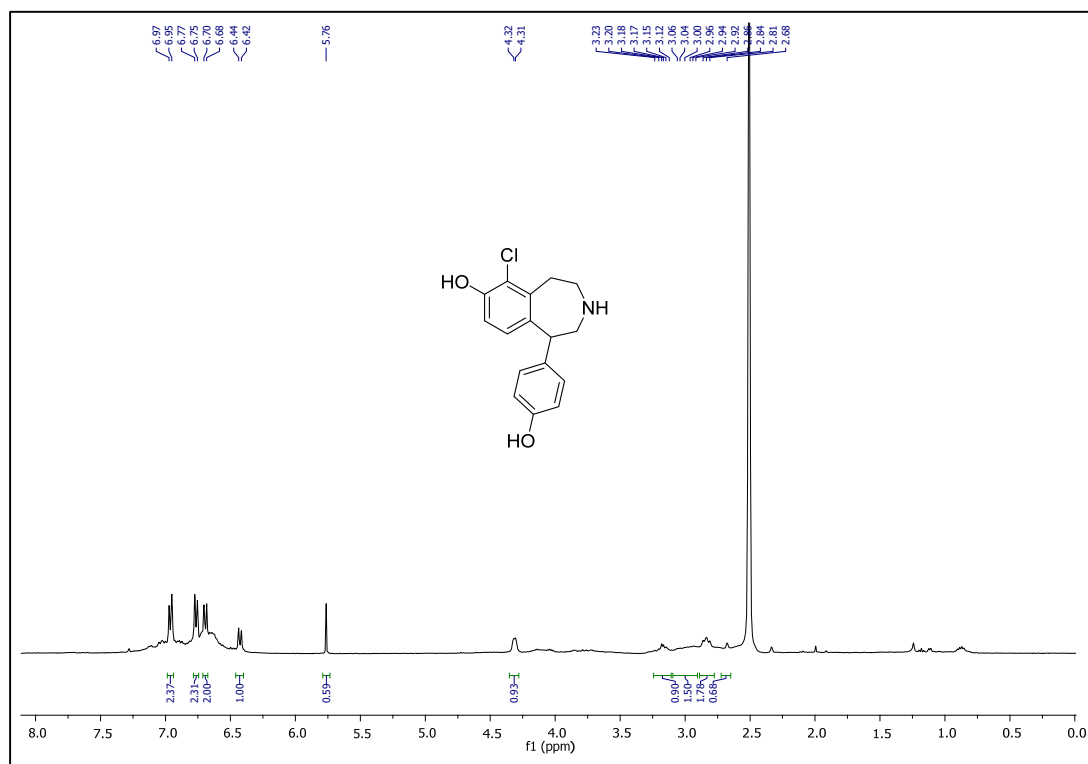
10c



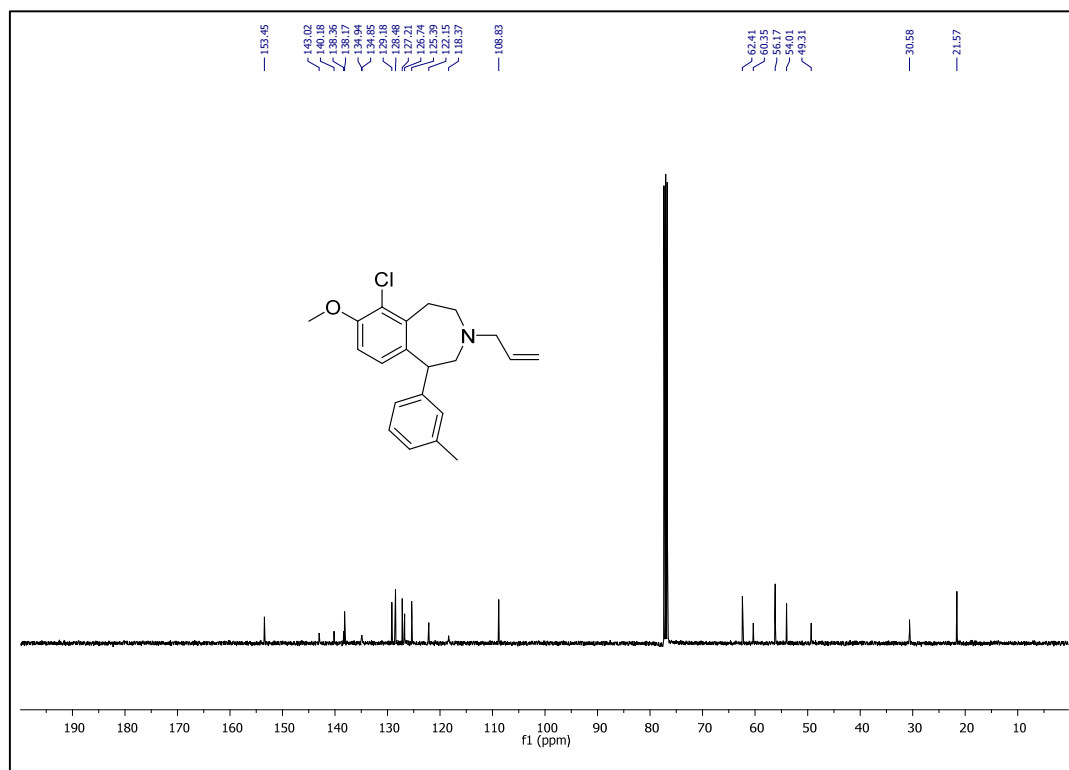
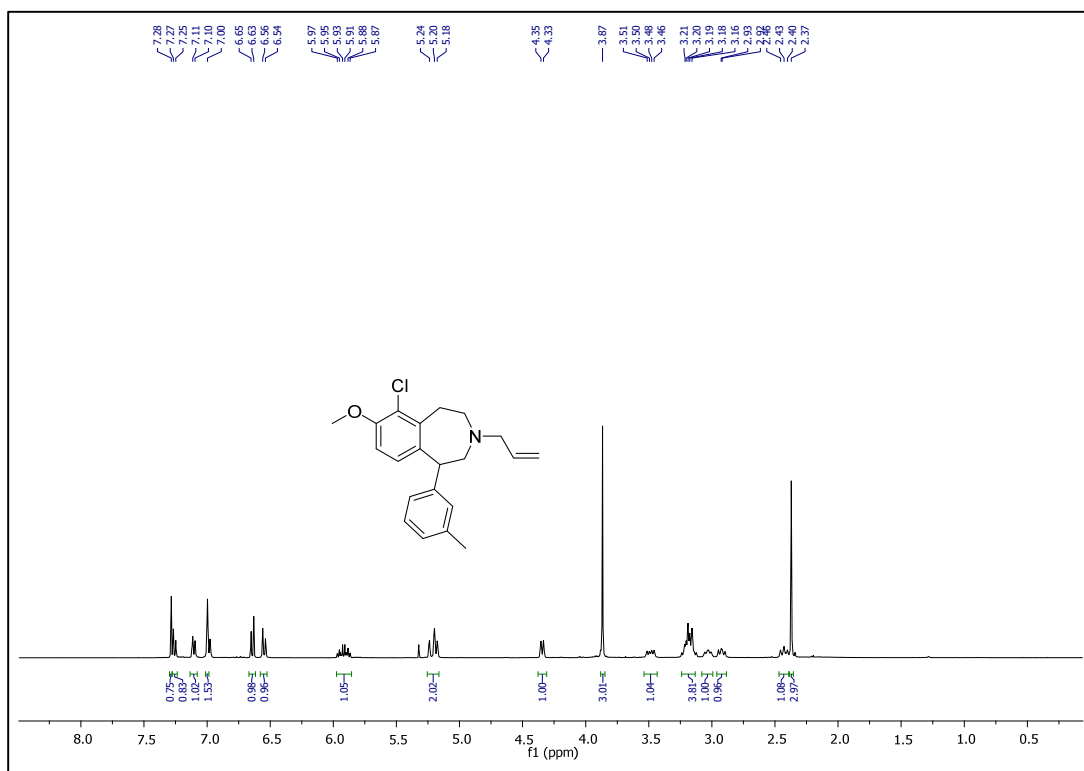
# 11b



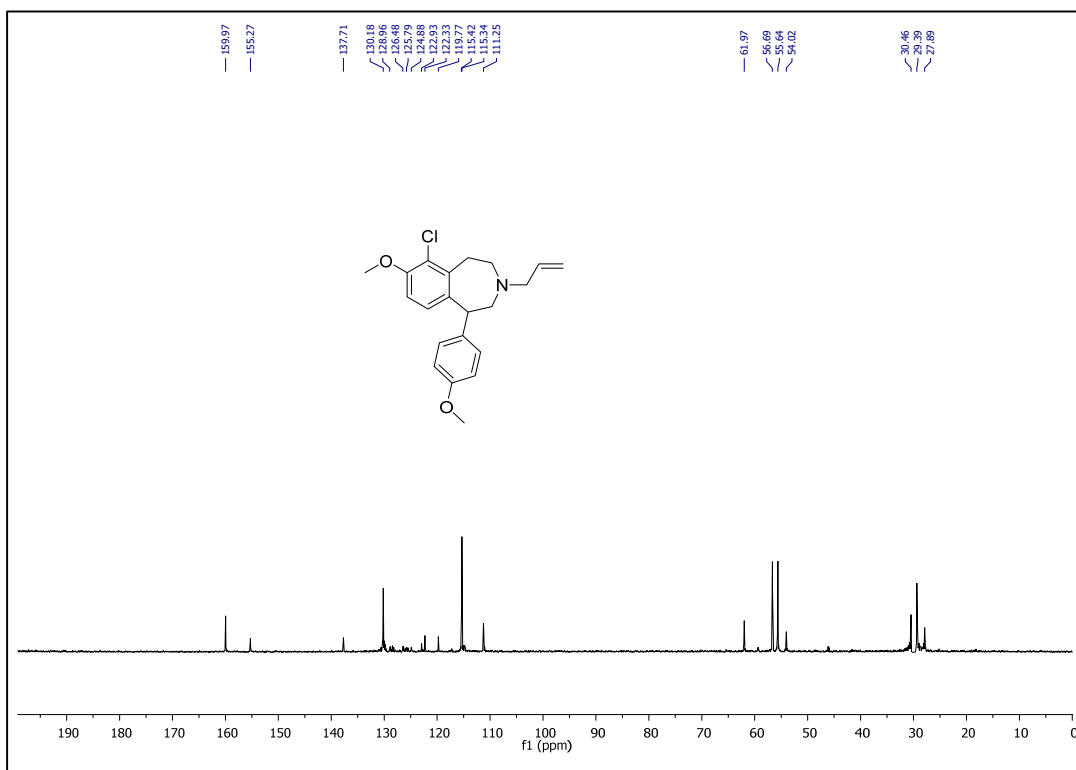
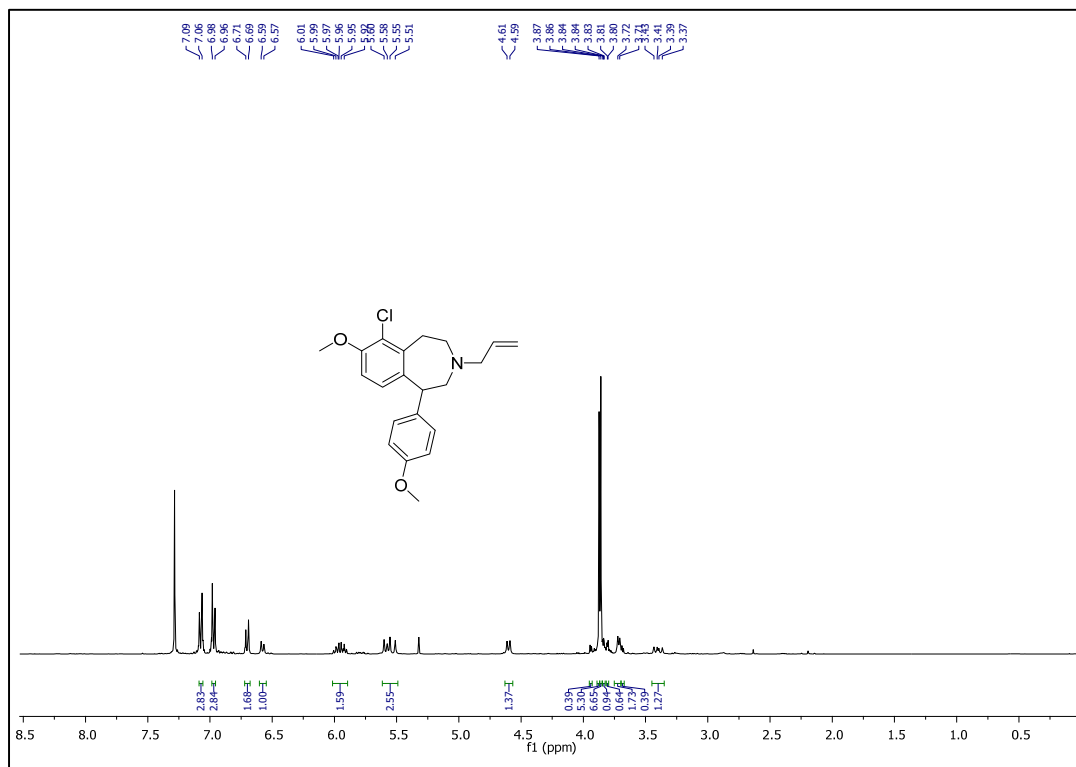
11c



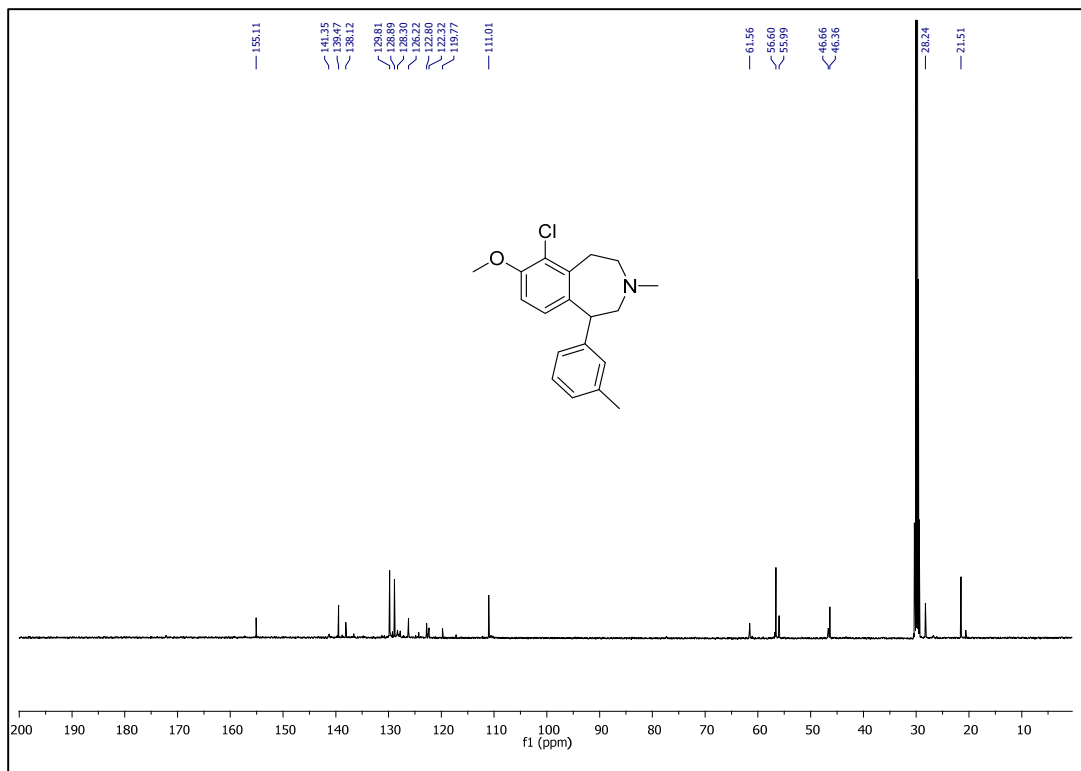
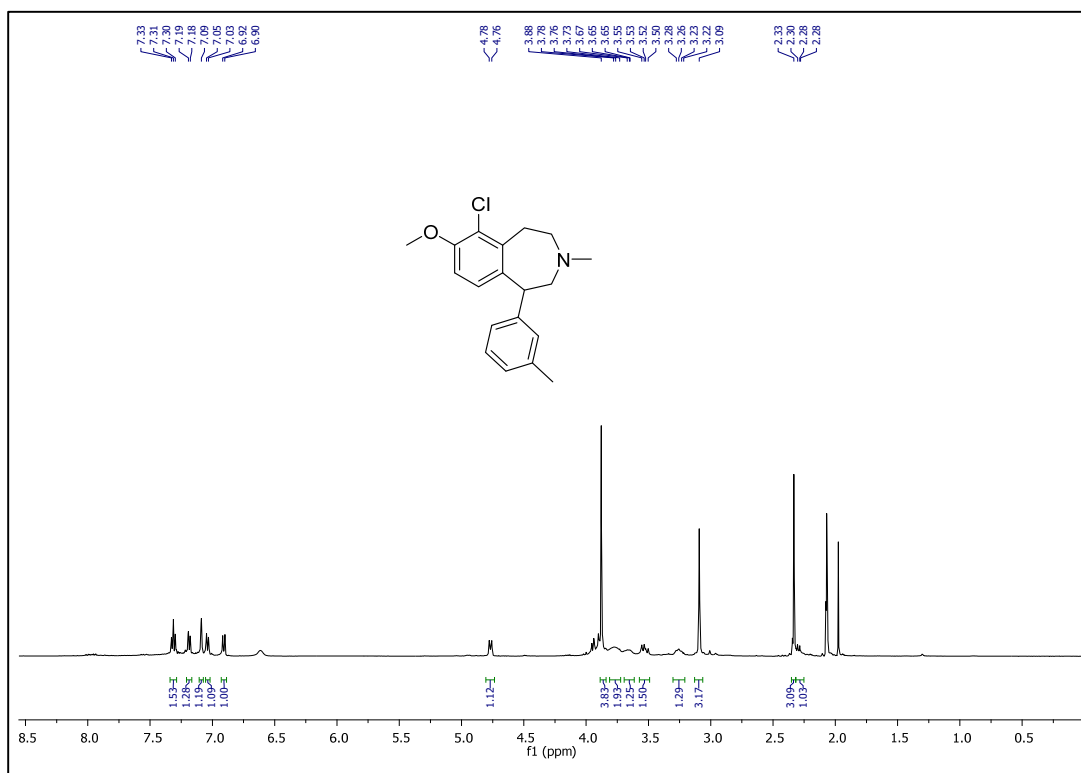
# 12b



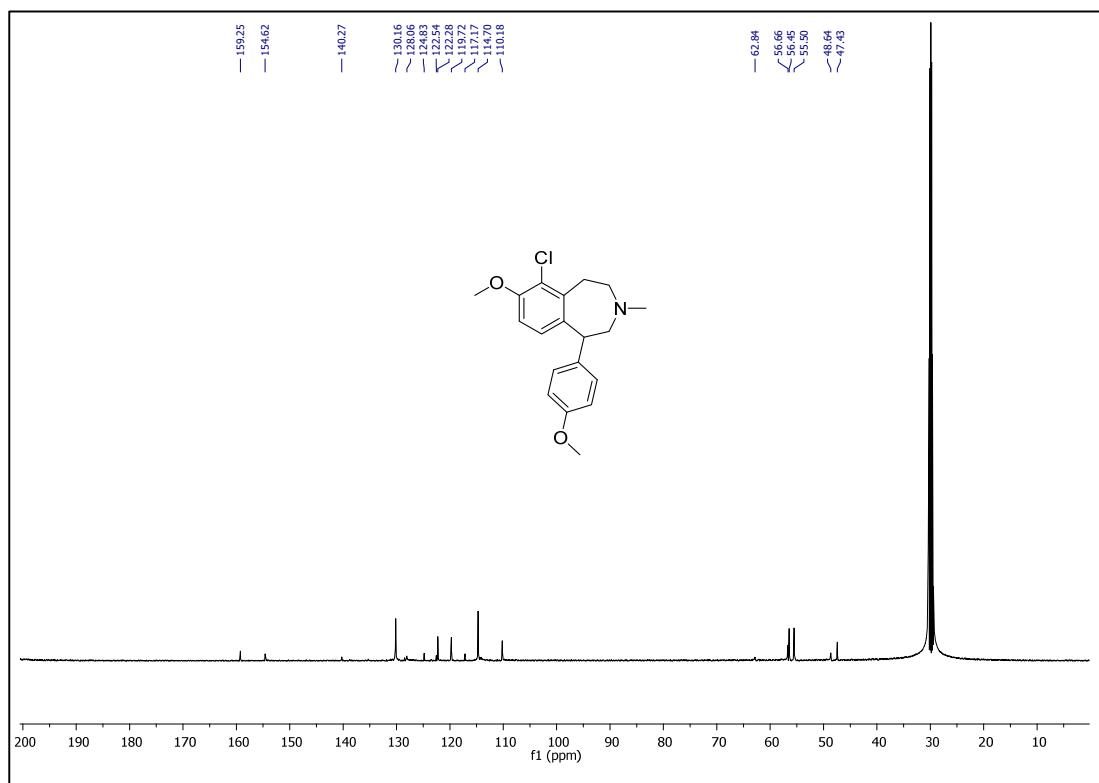
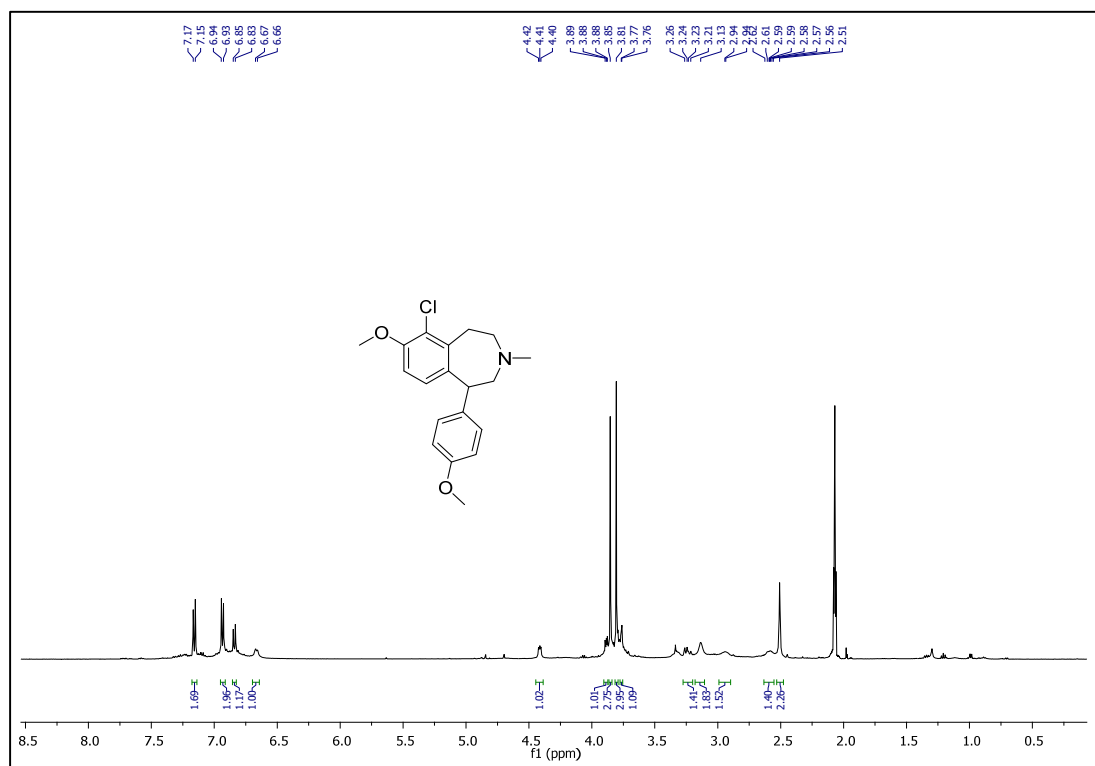
12c



# 13b

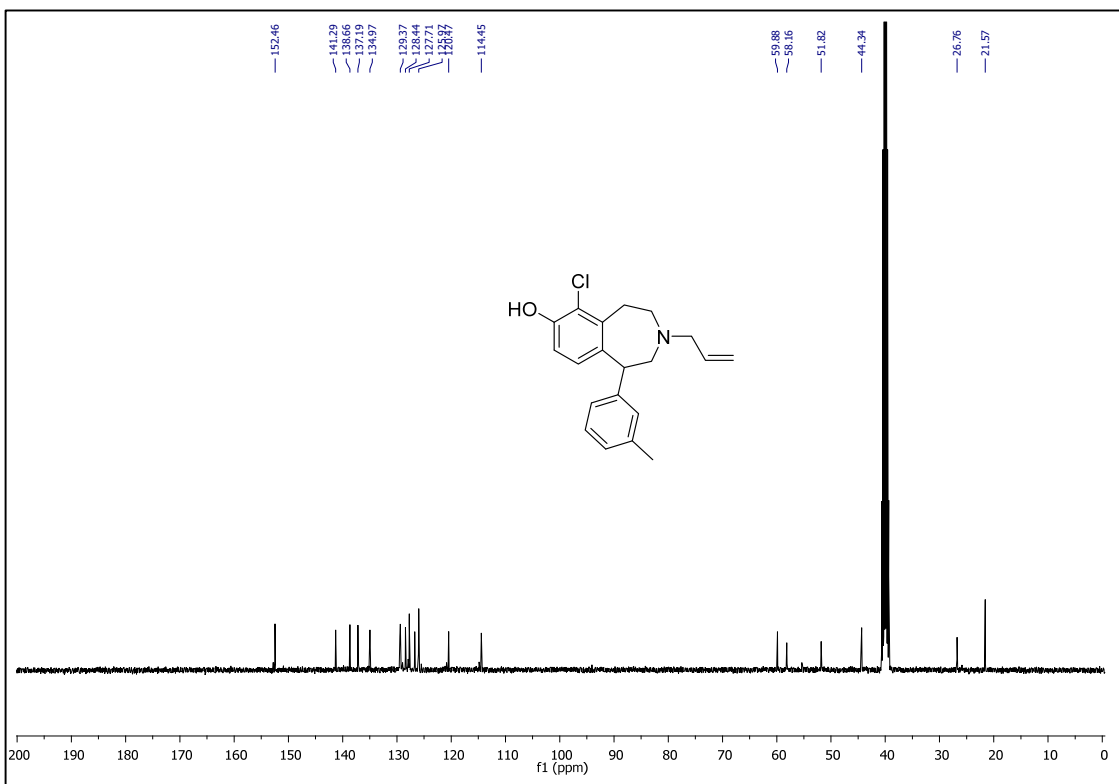
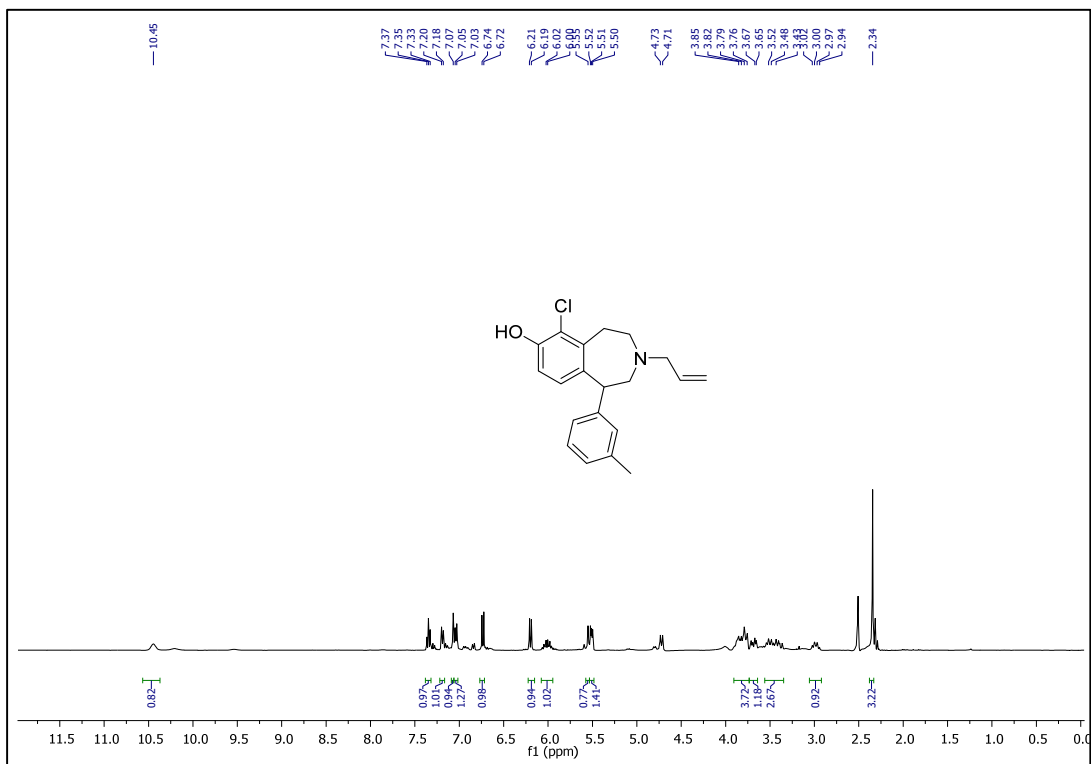


13c

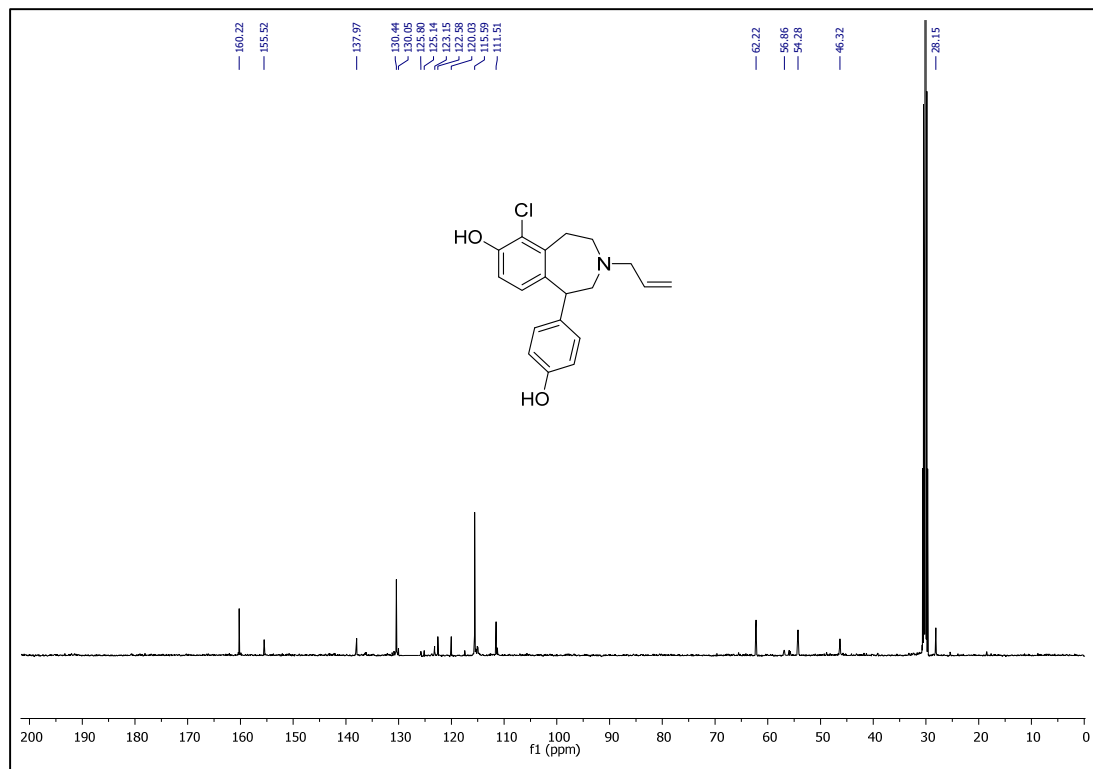
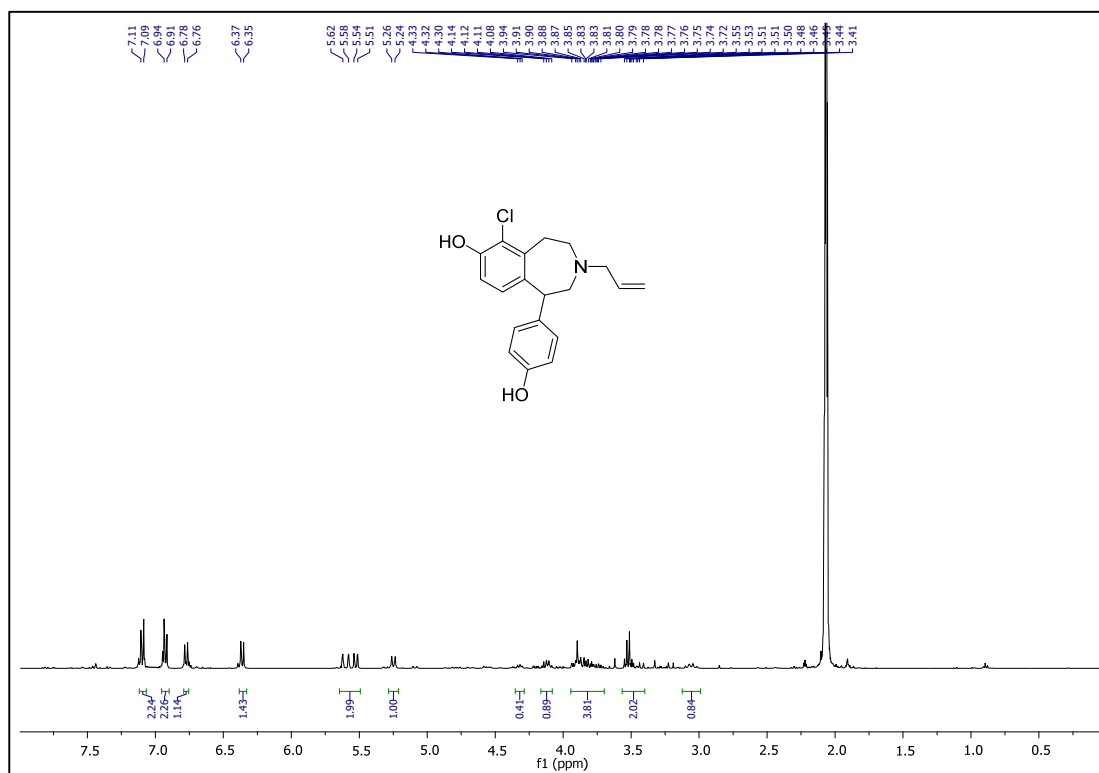


S10

**14b**

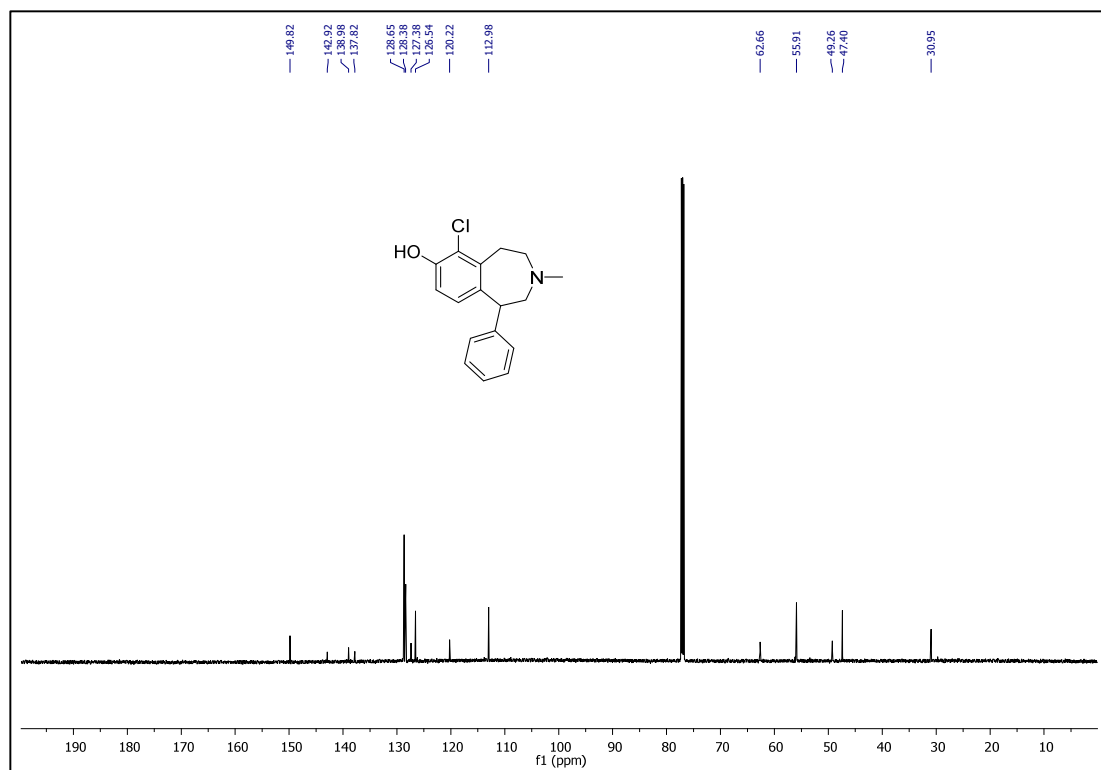
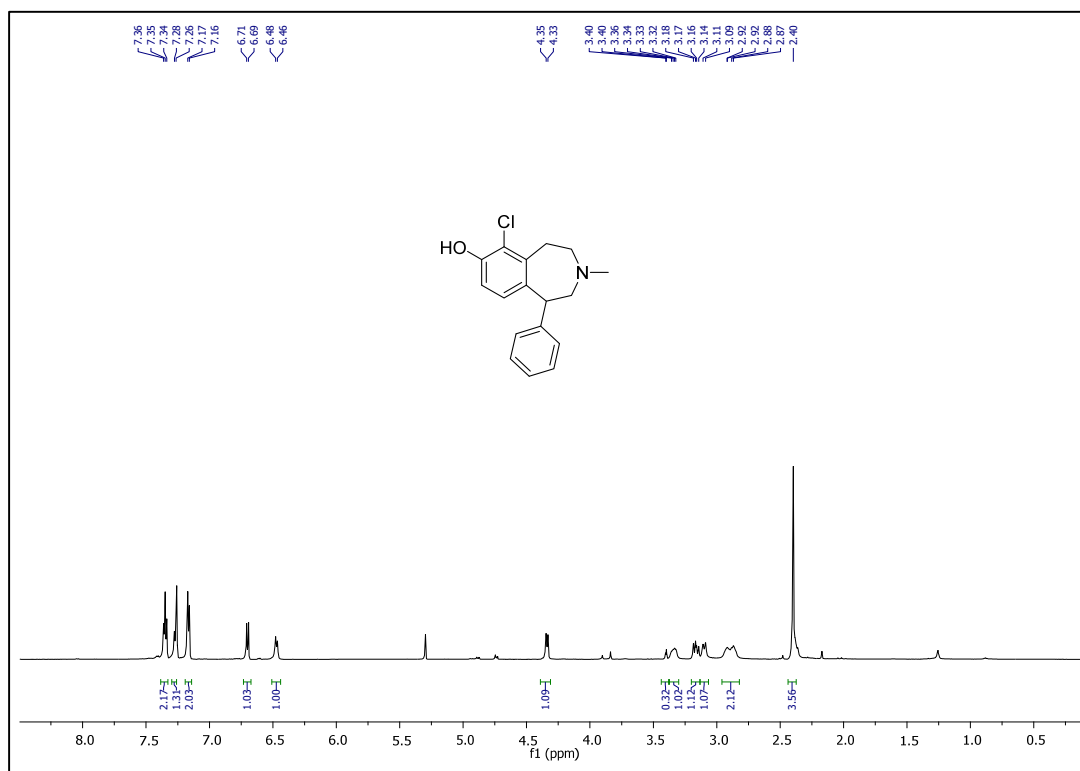


14d

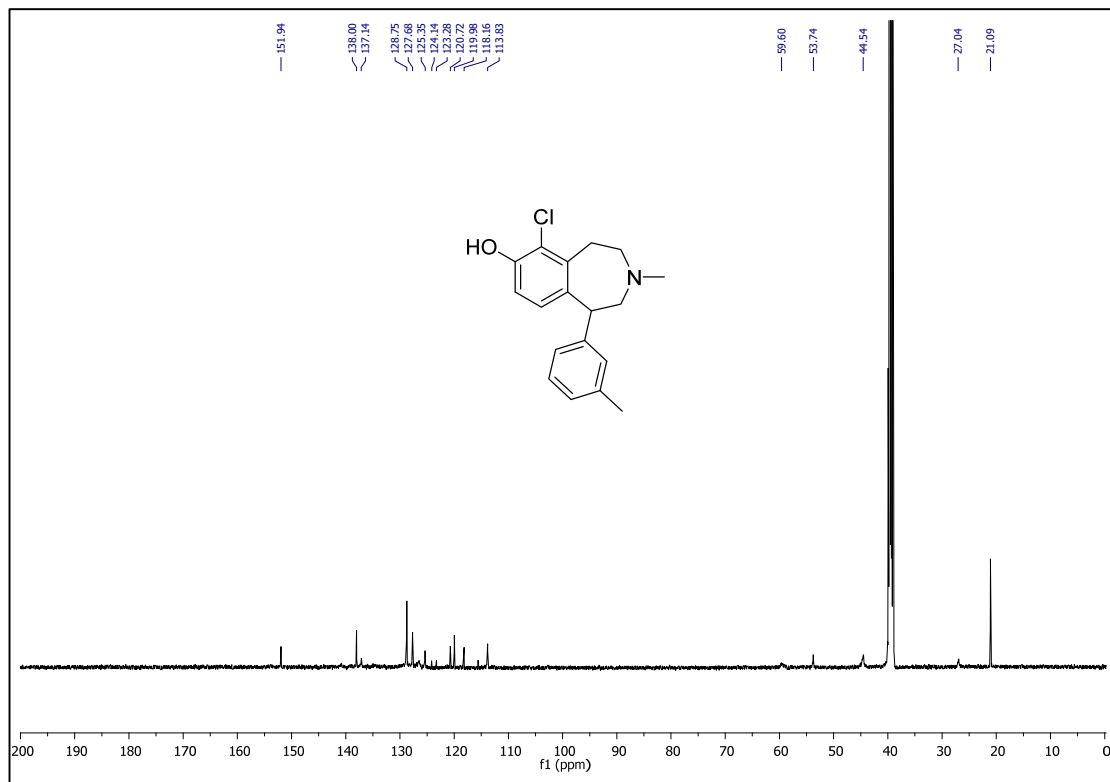
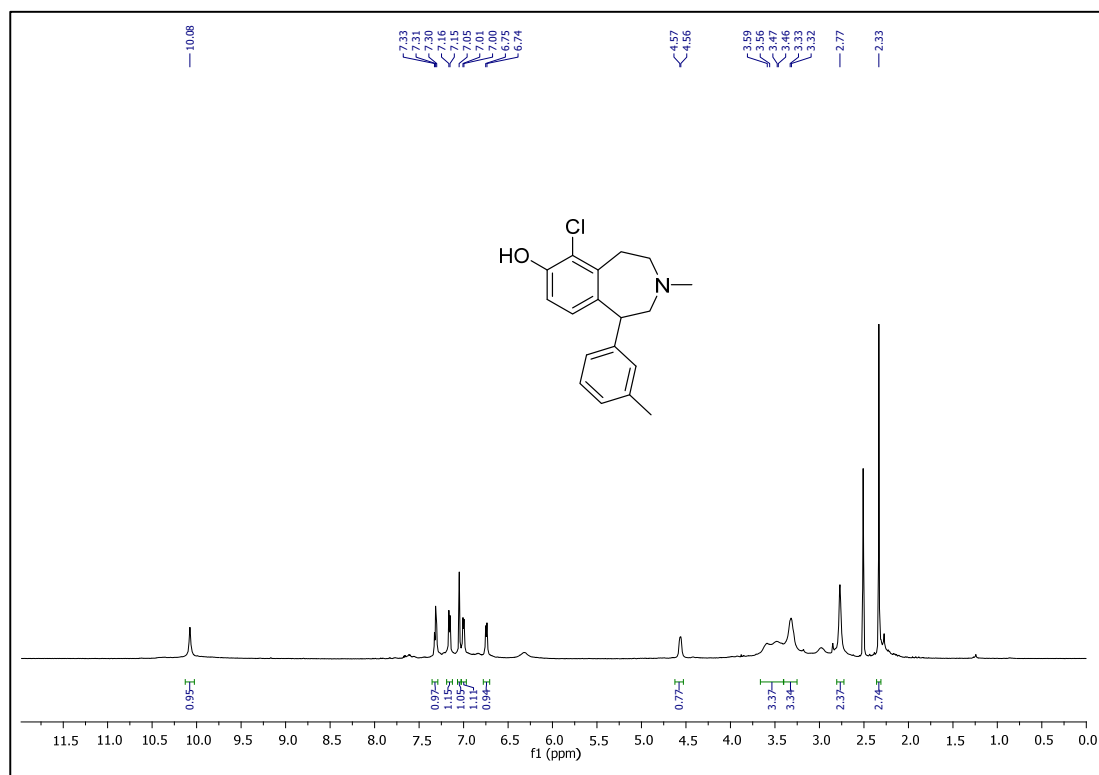


S12

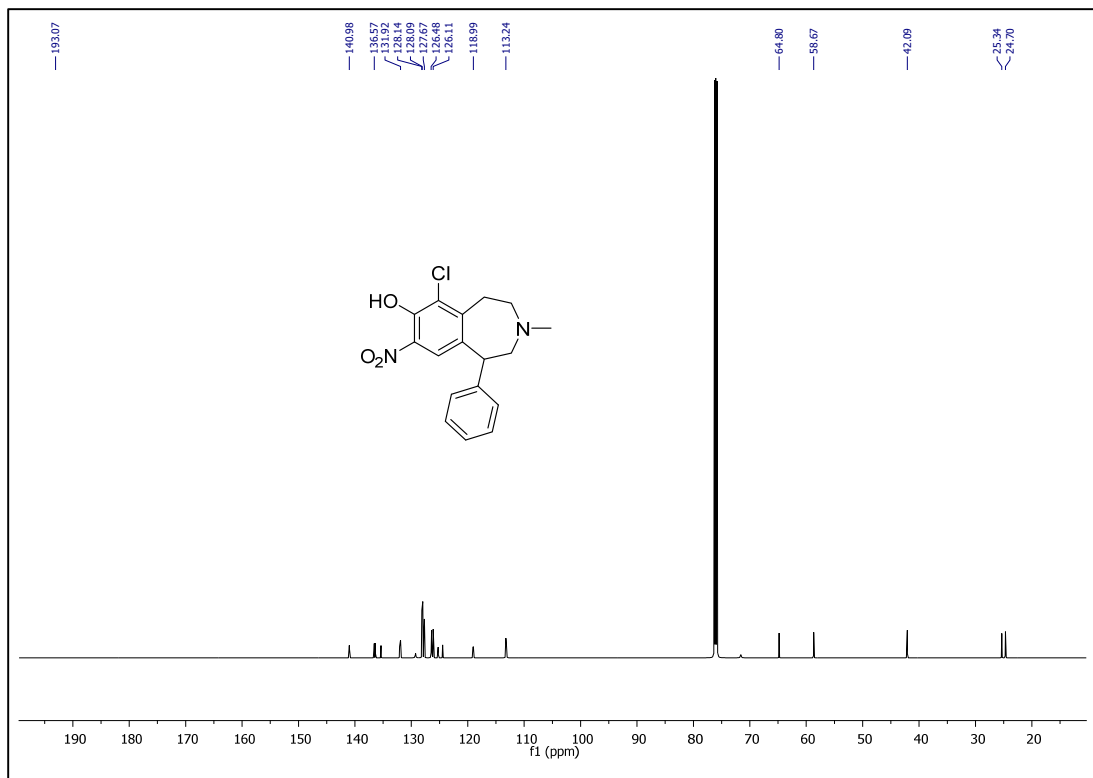
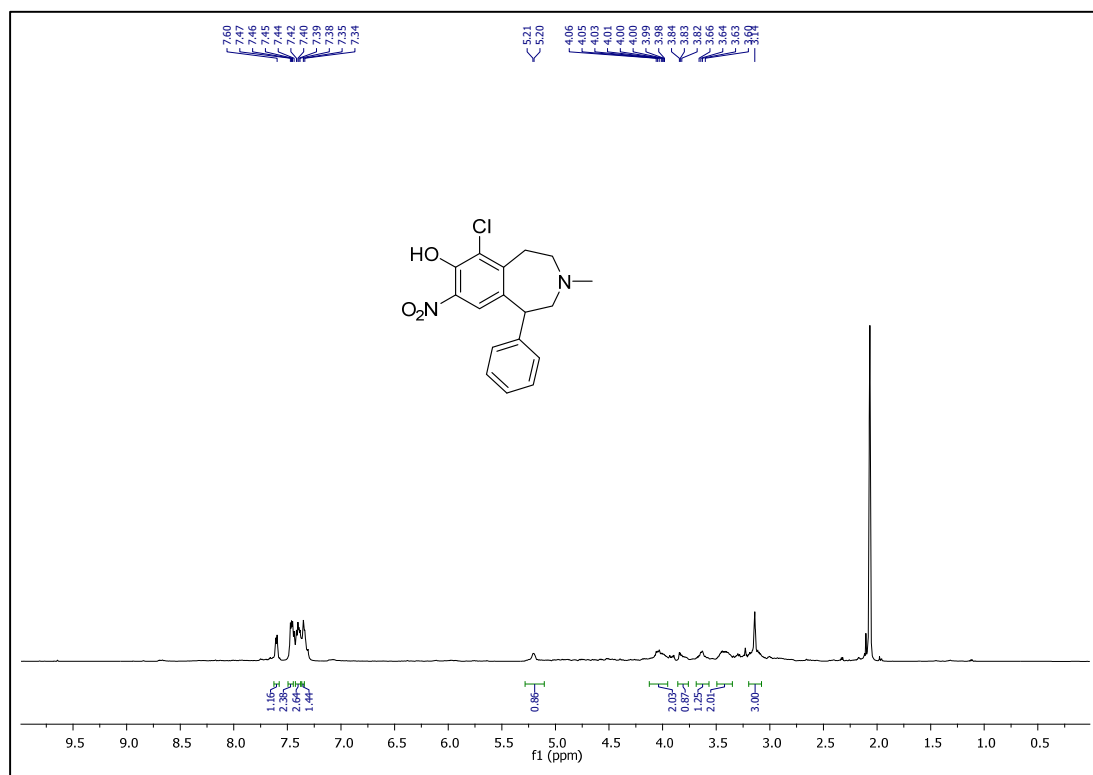
# 15a



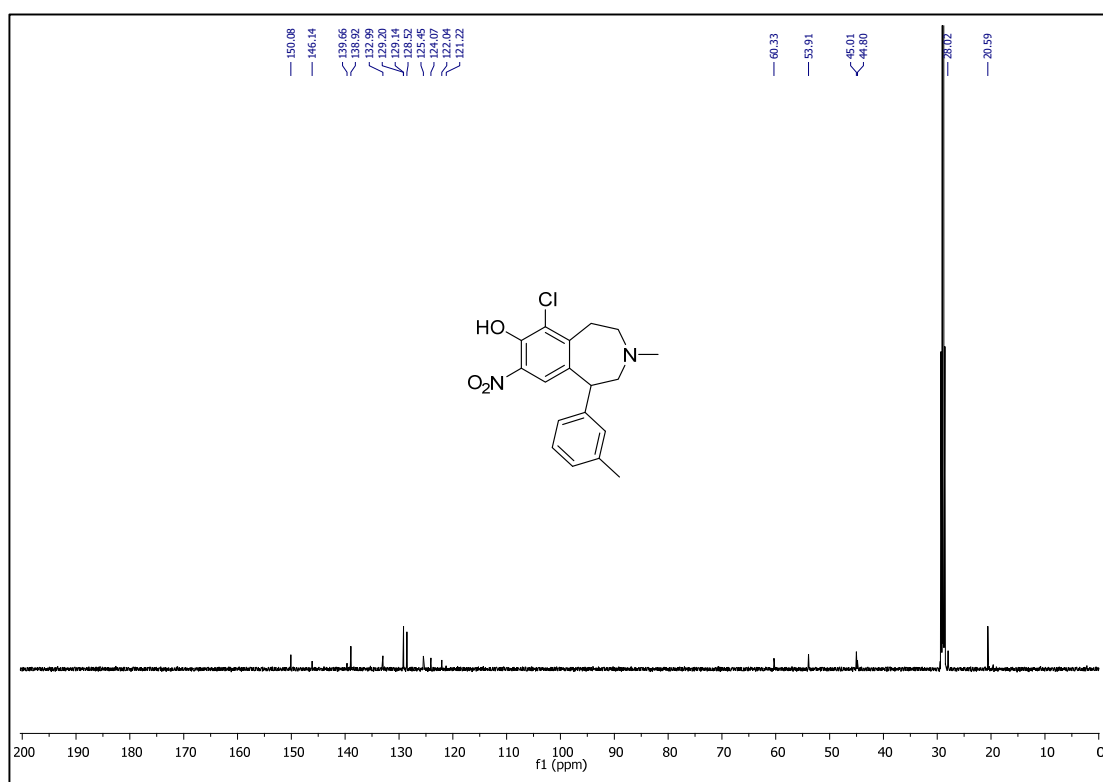
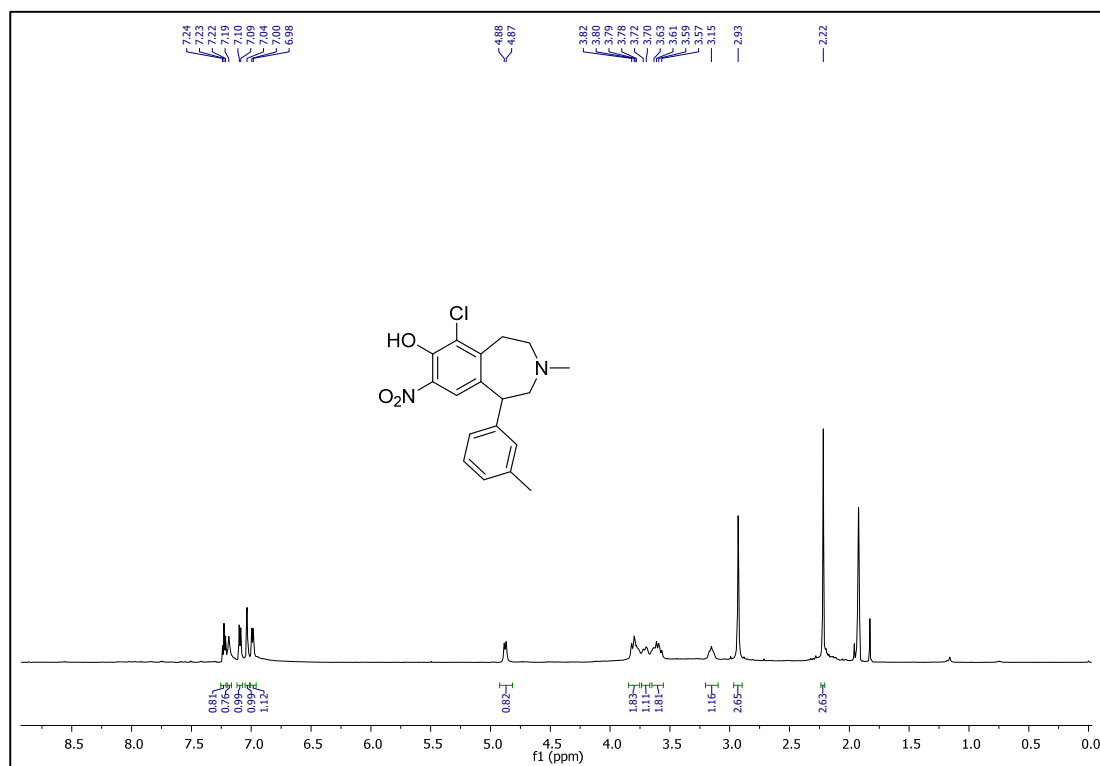
# 15b



# 16a

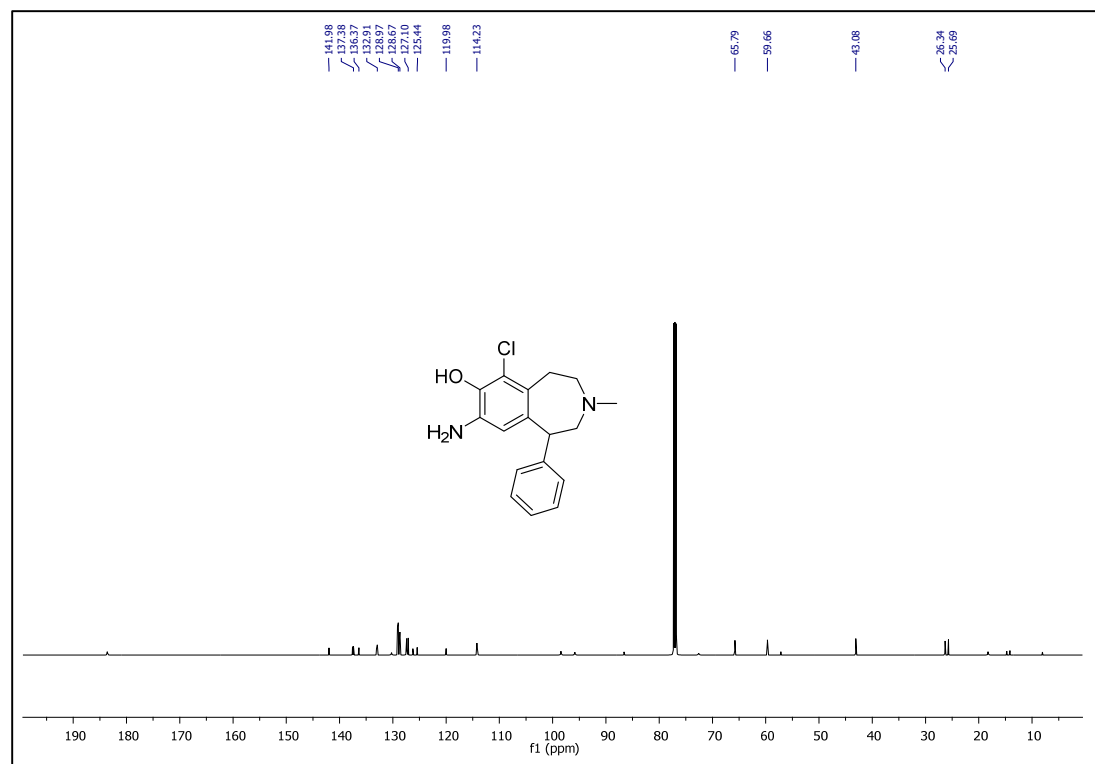
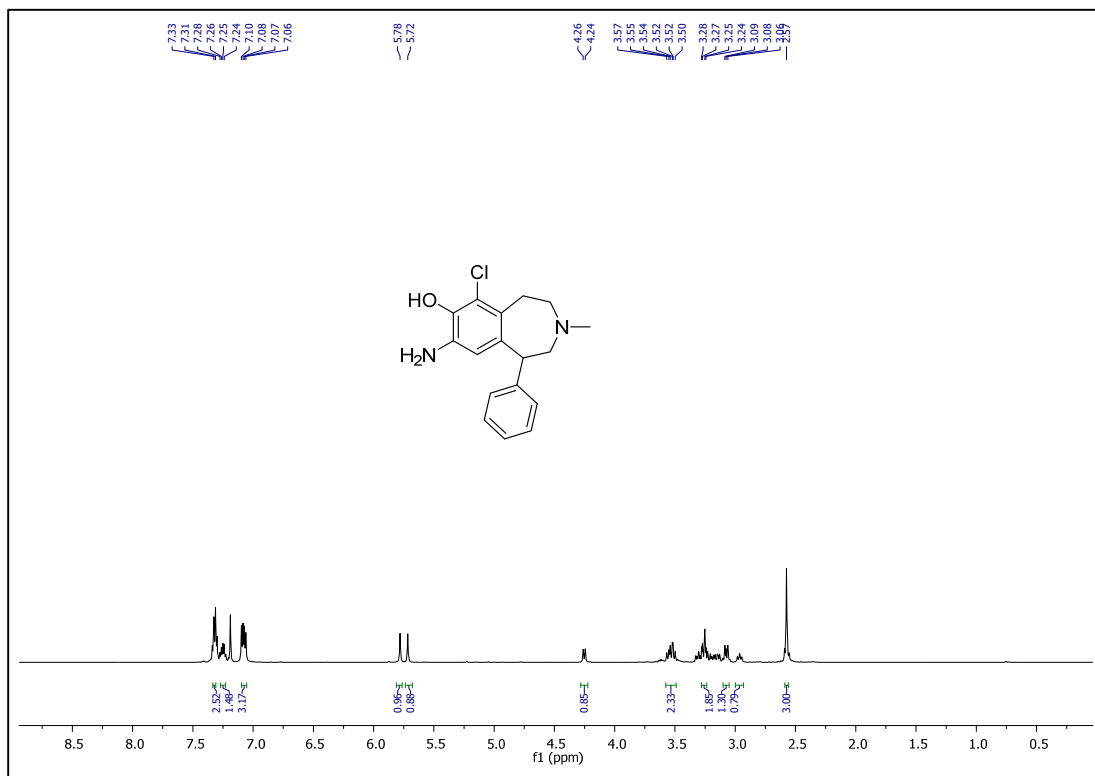


16b



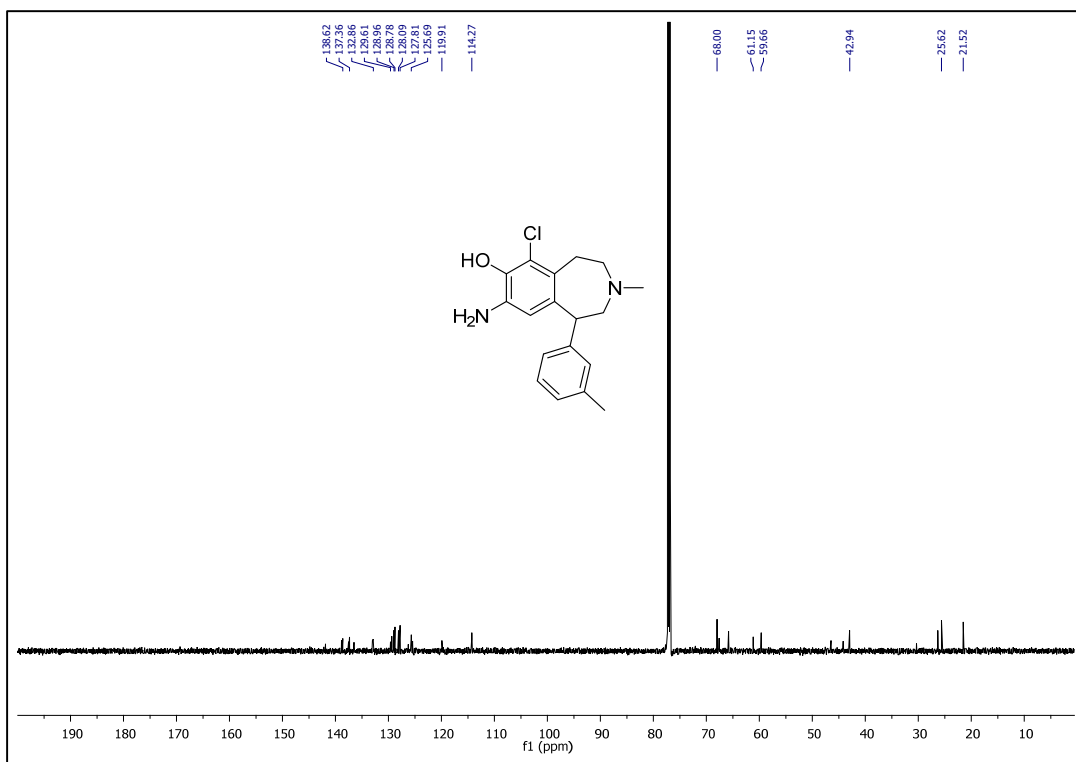
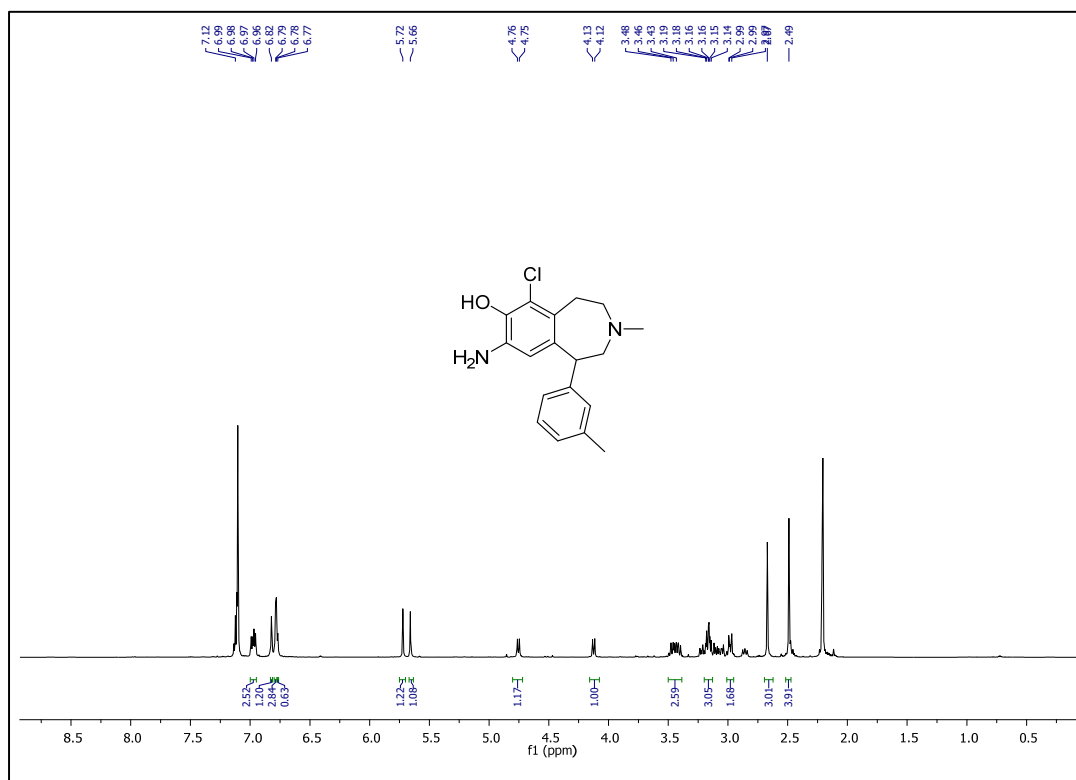
S16

17a



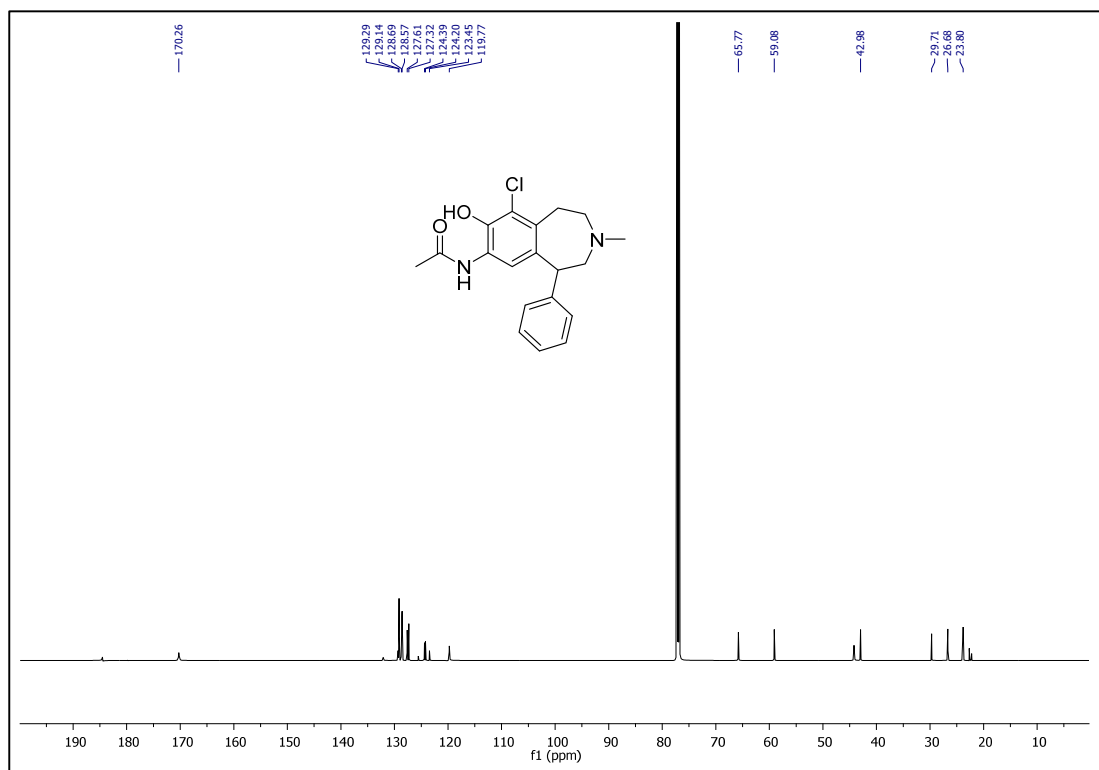
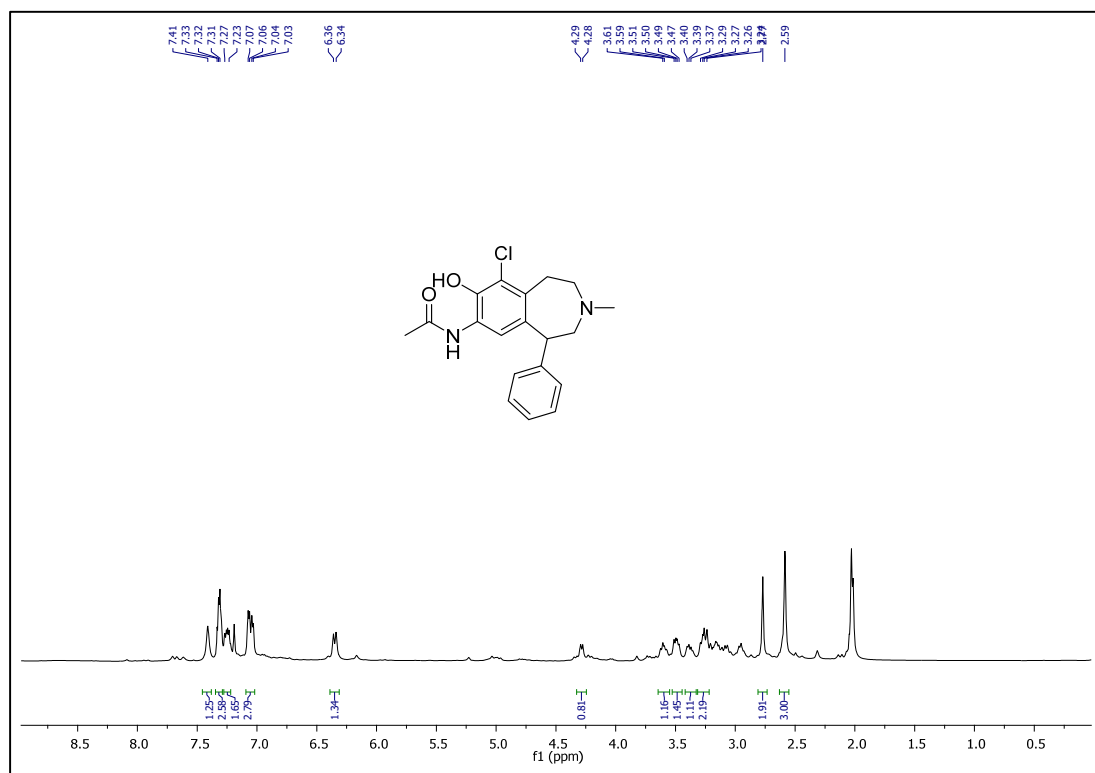
S17

17b



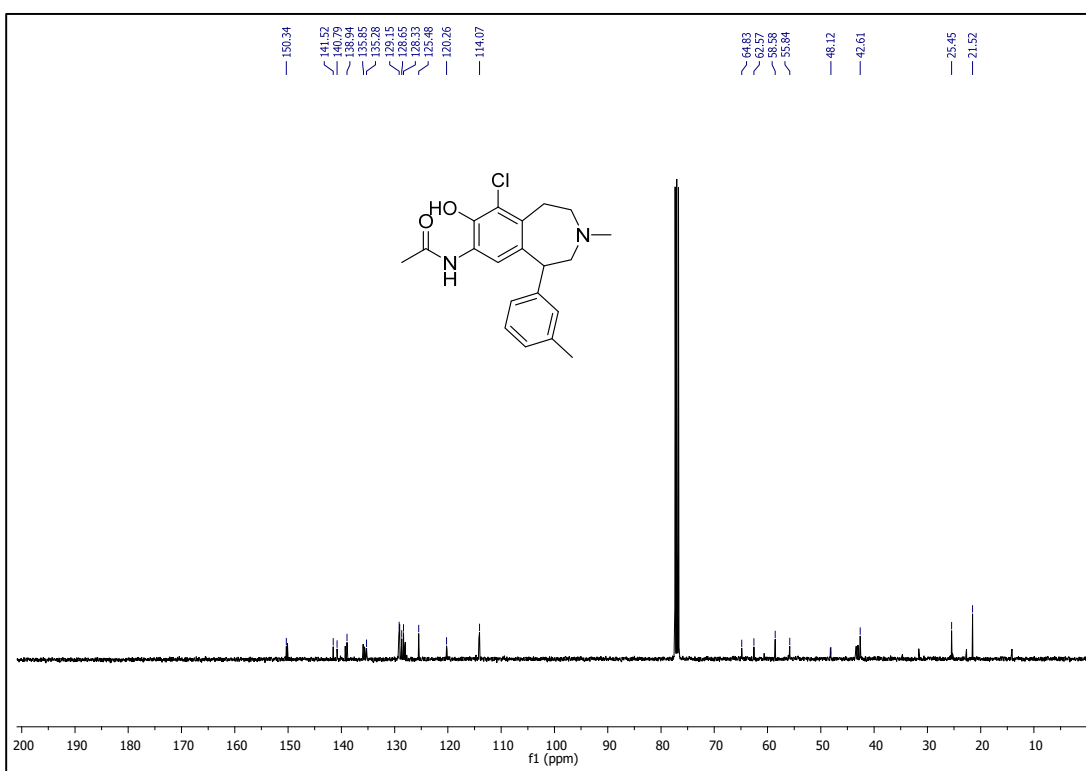
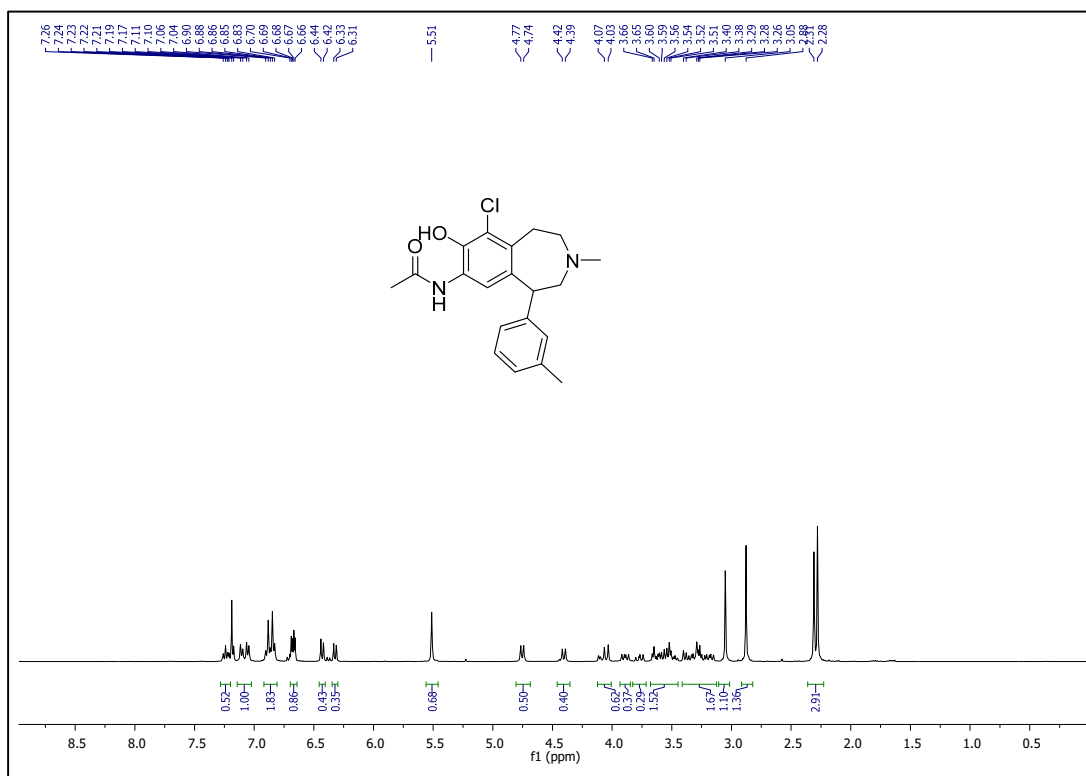
S18

18a



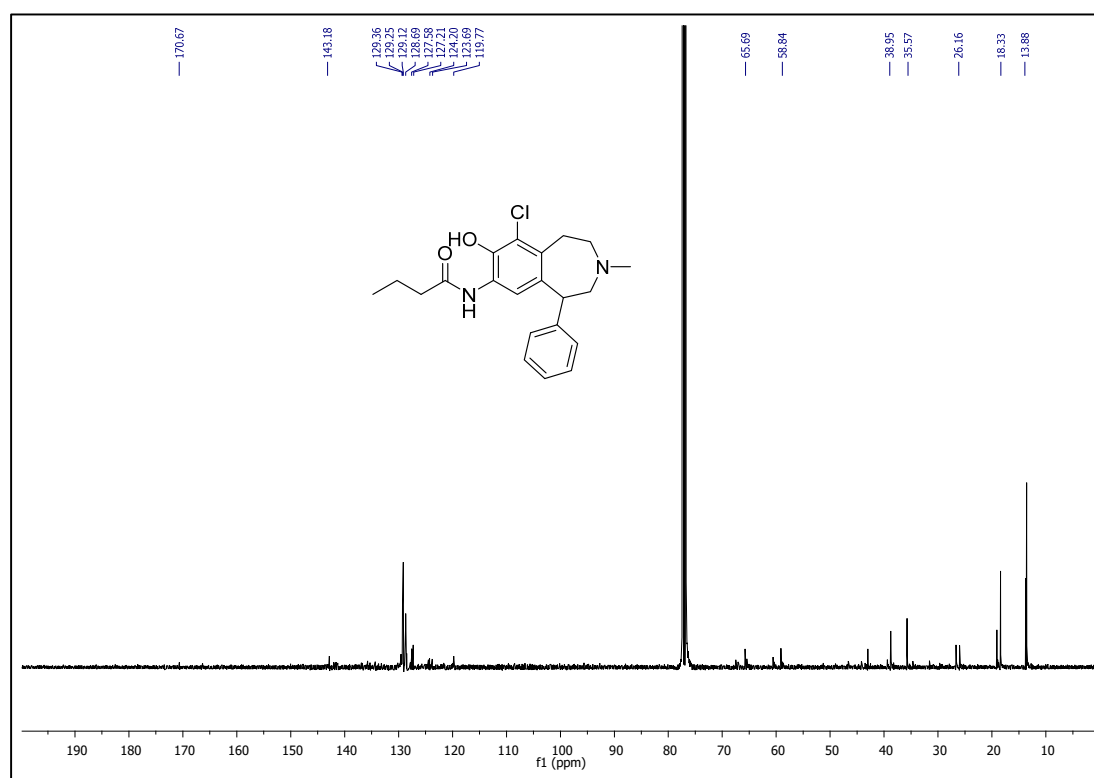
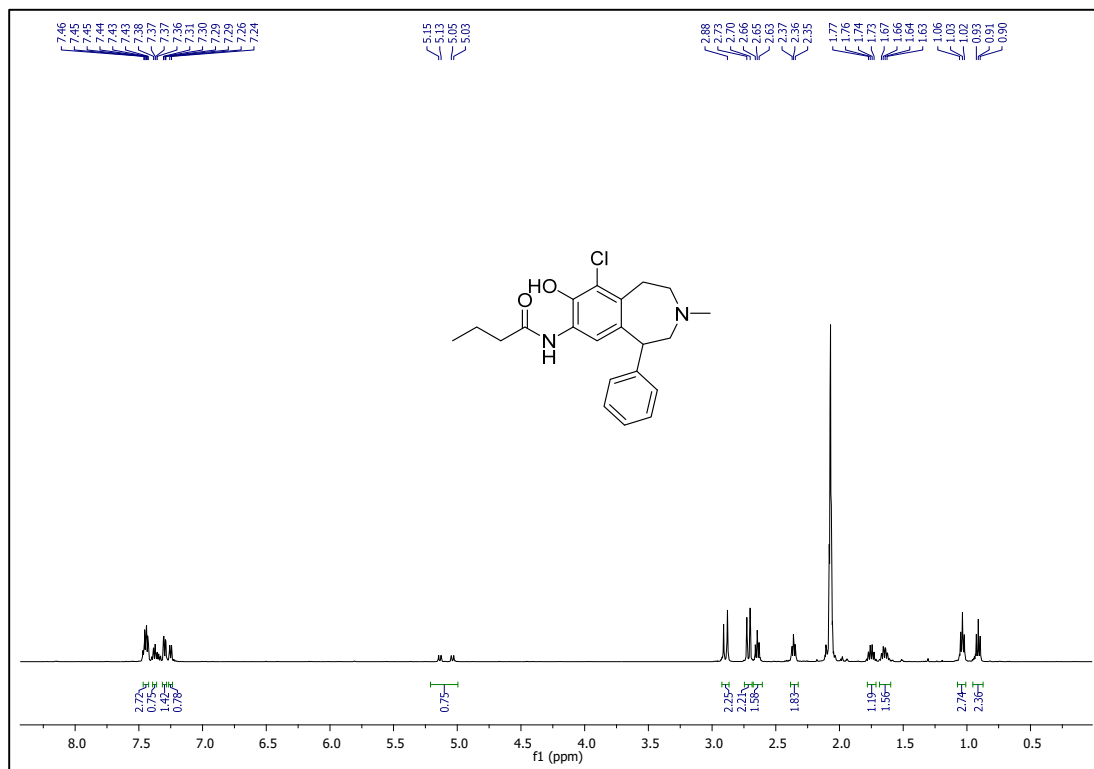
S19

18b



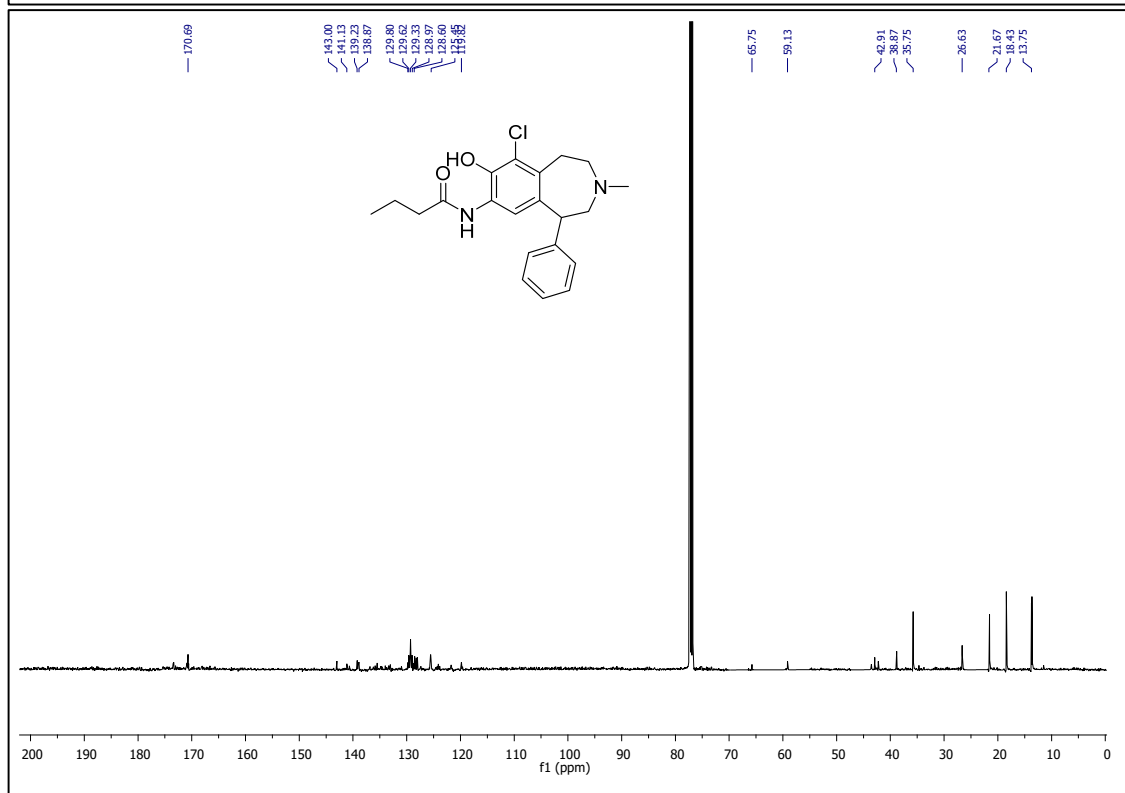
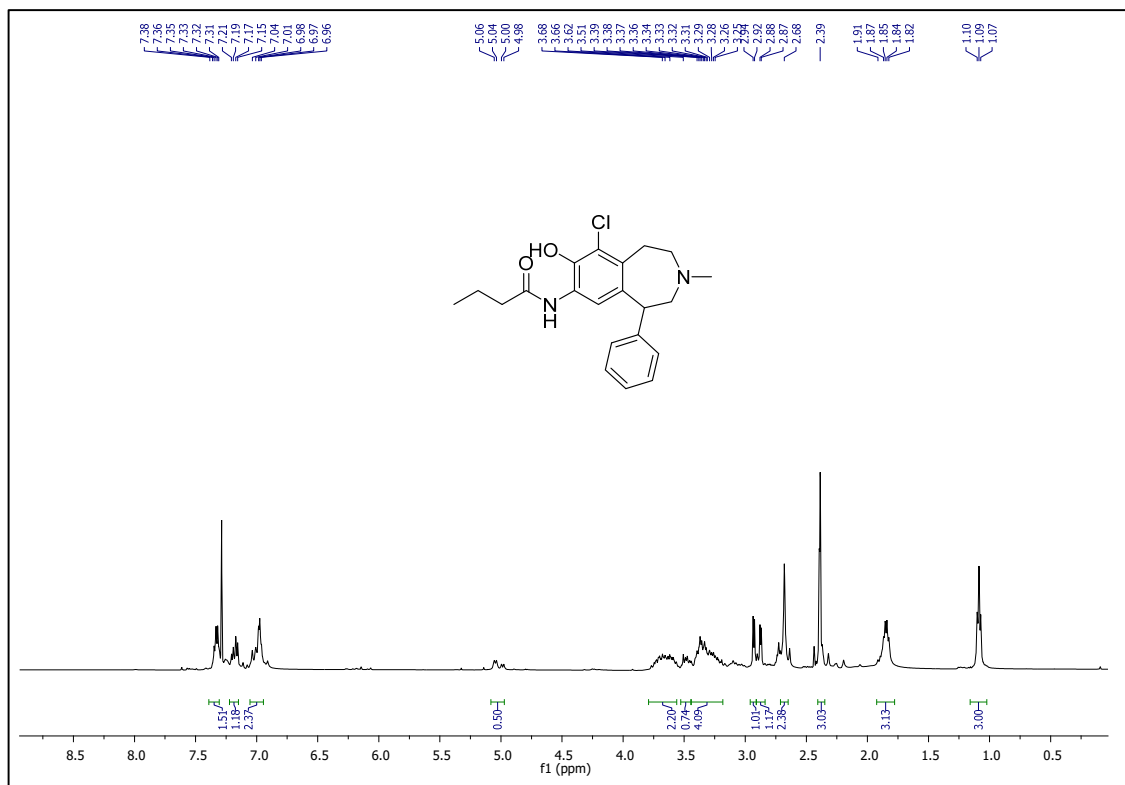
S20

19a

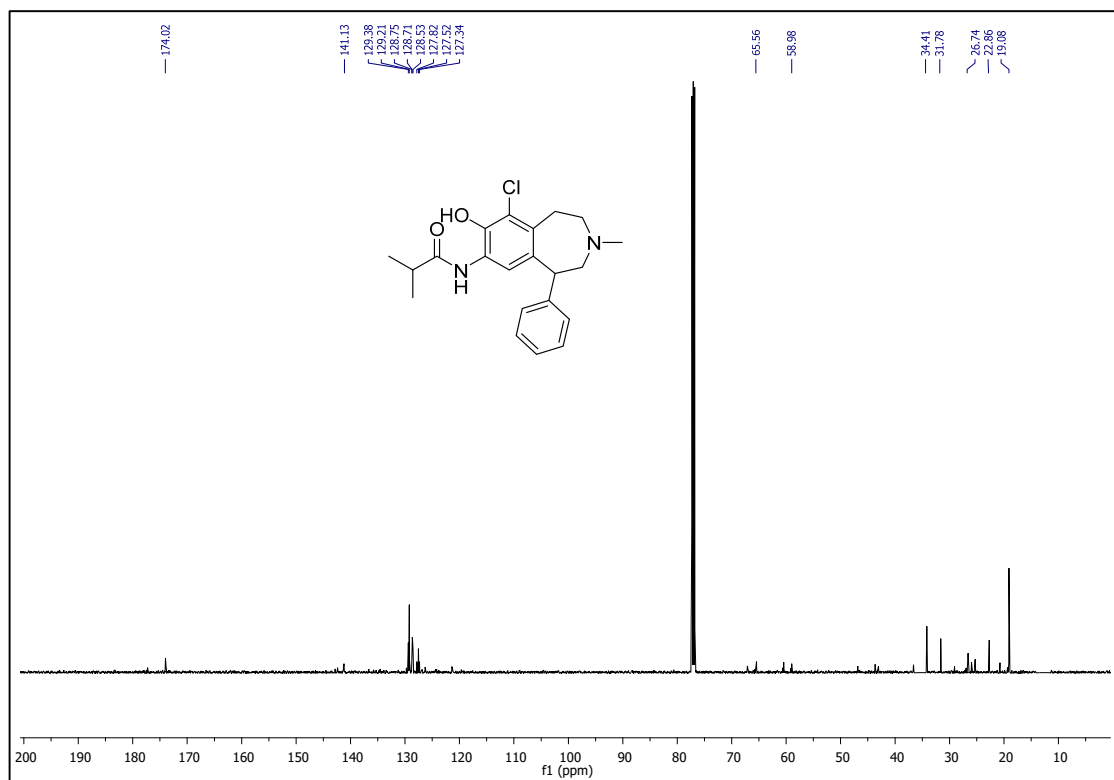
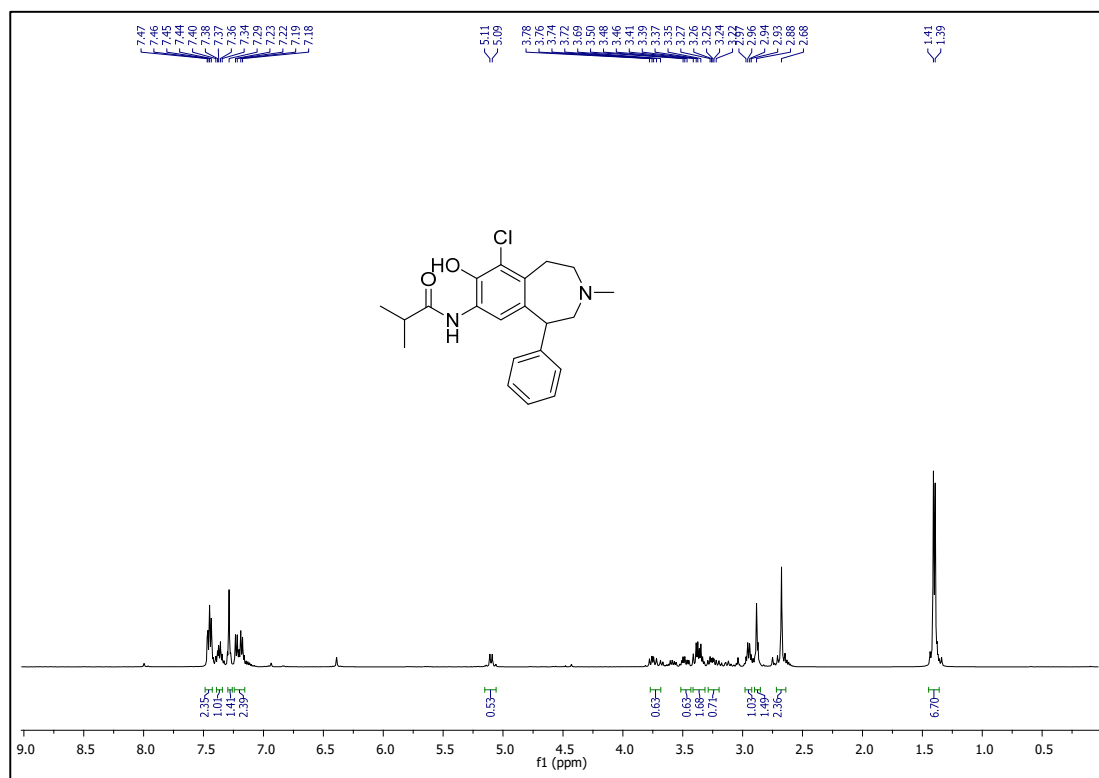


S21

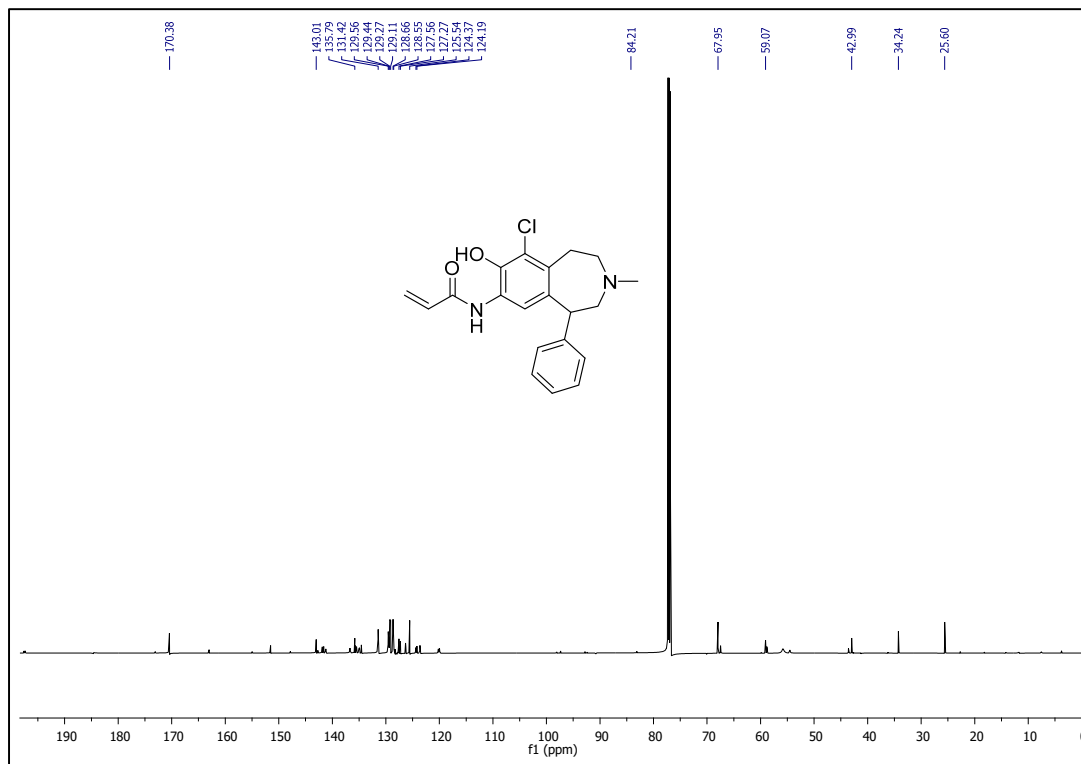
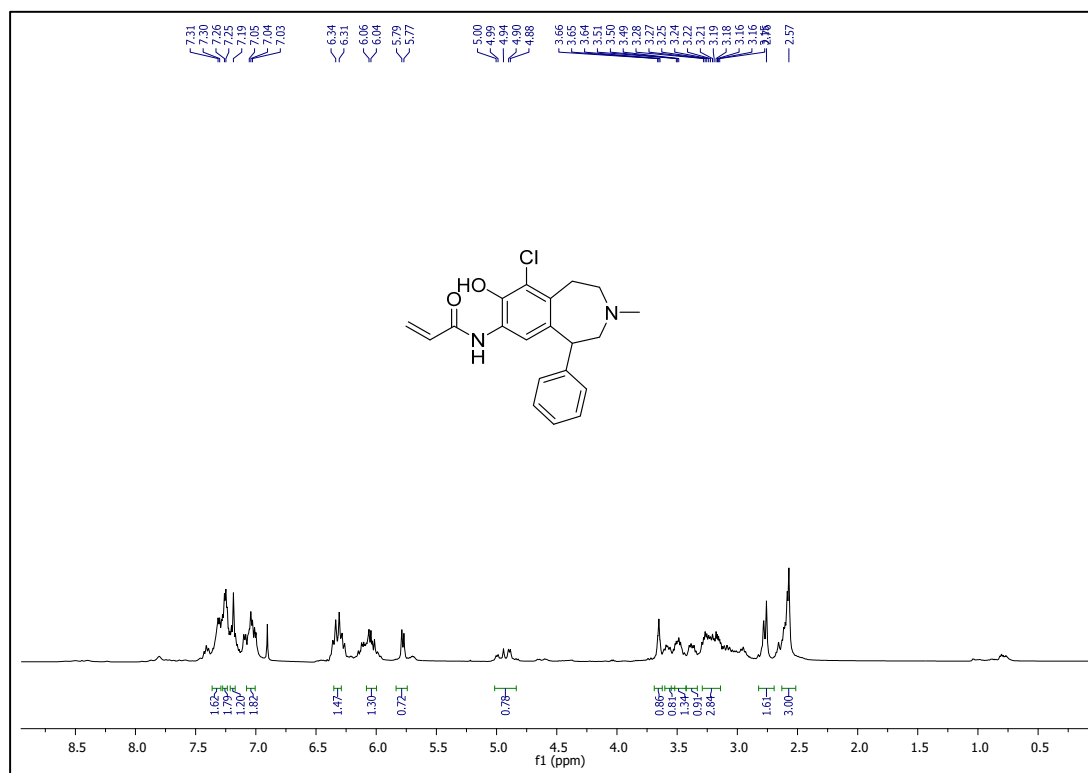
19b



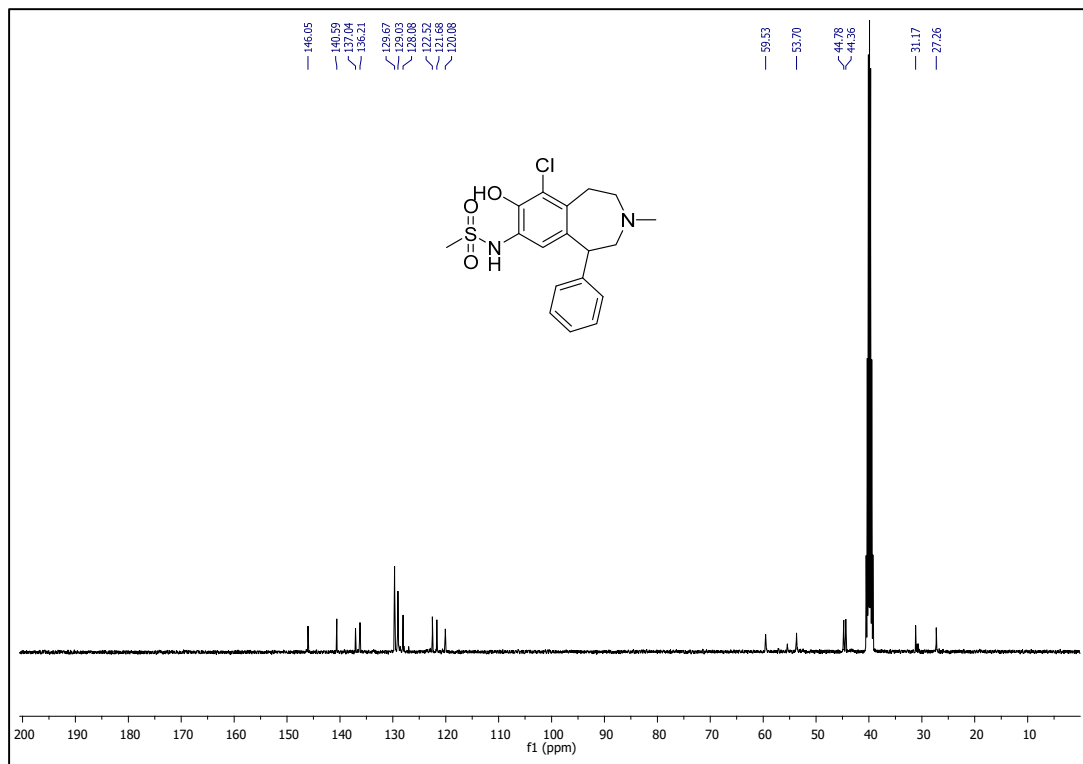
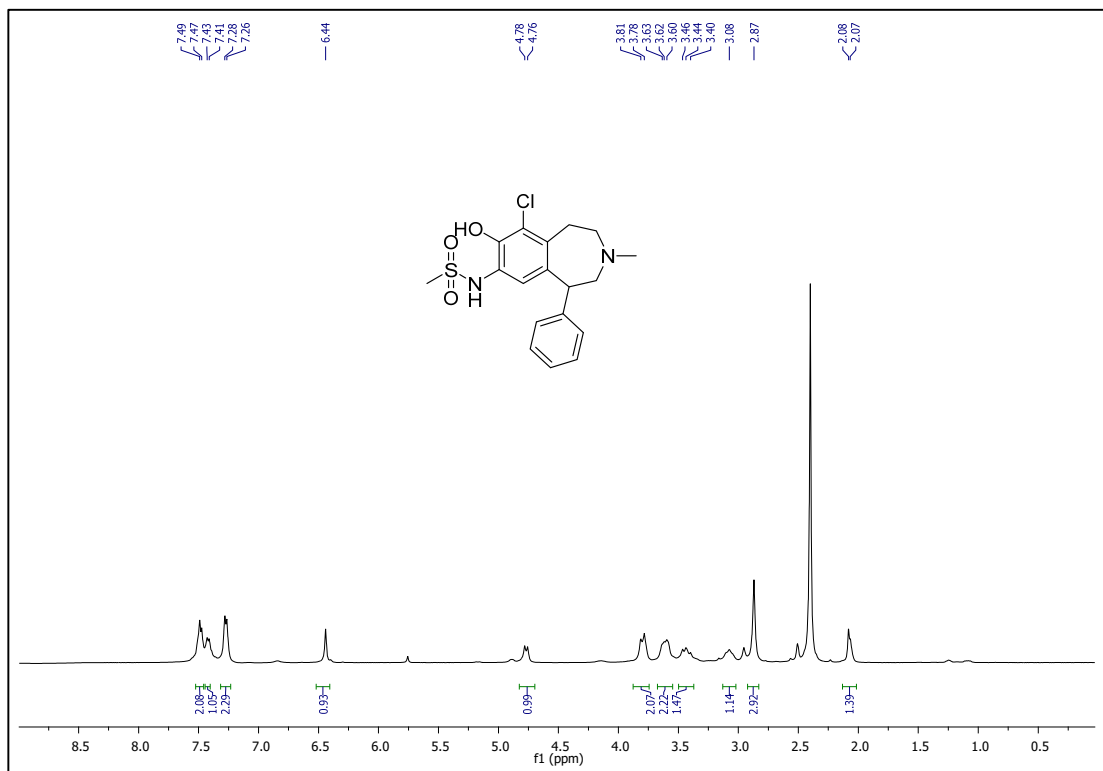
20a



# 21a

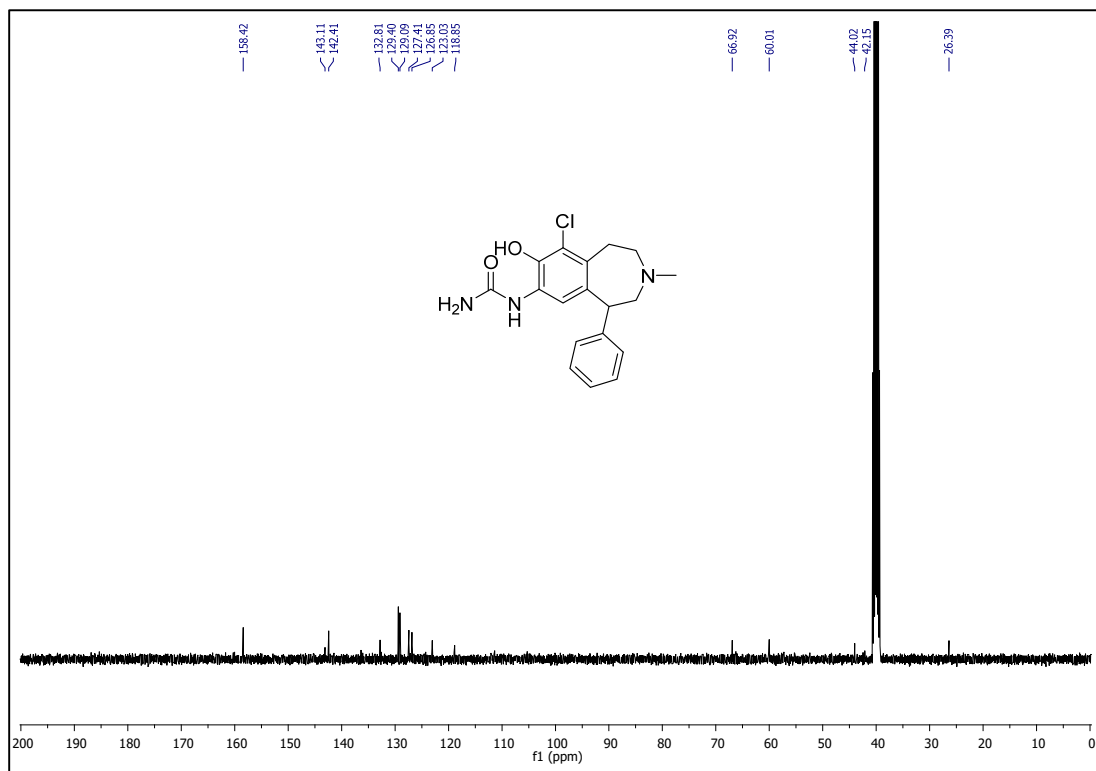
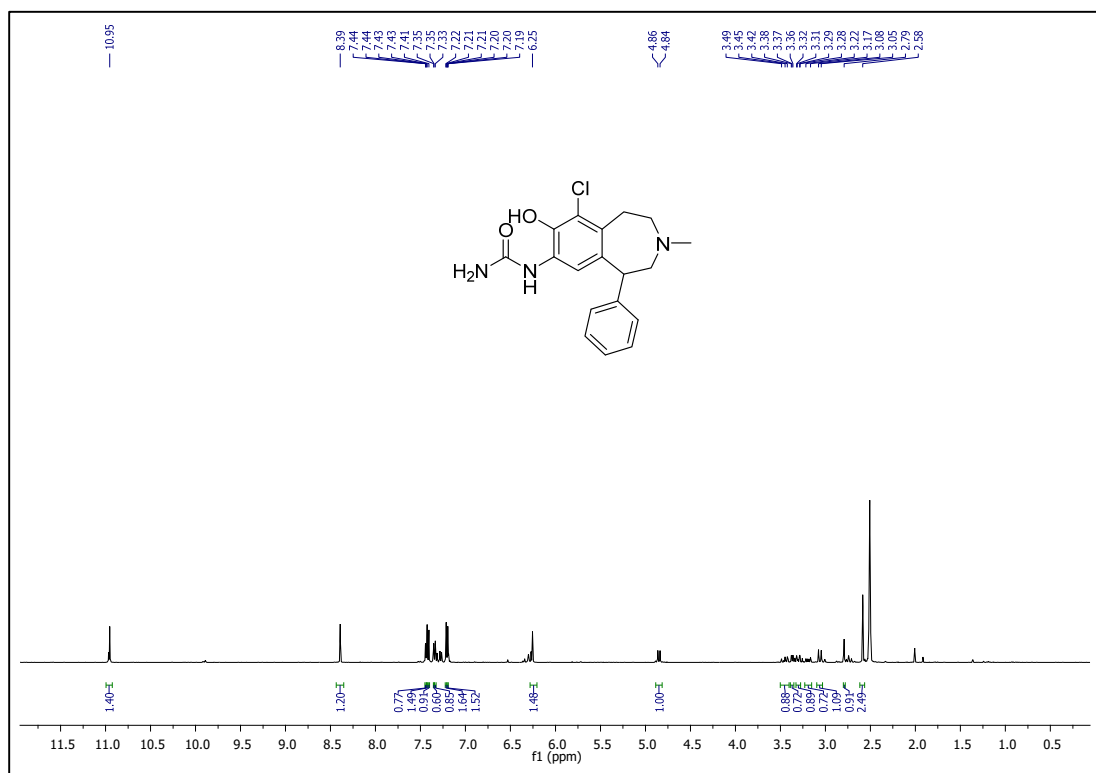


22



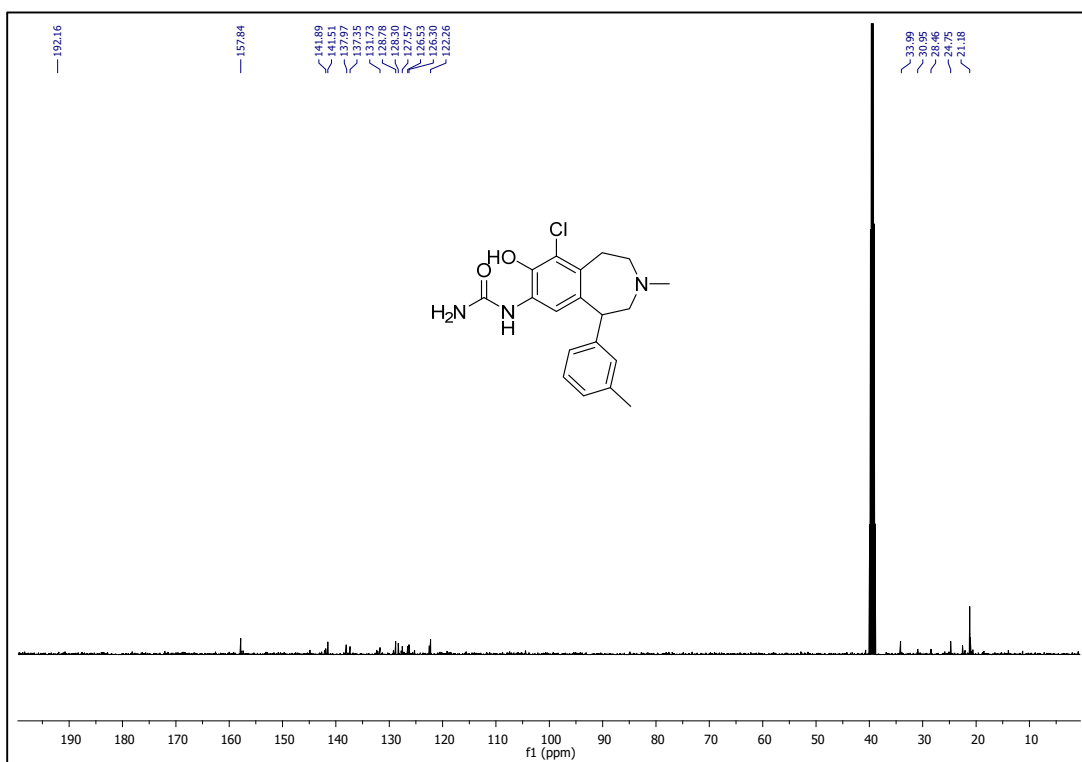
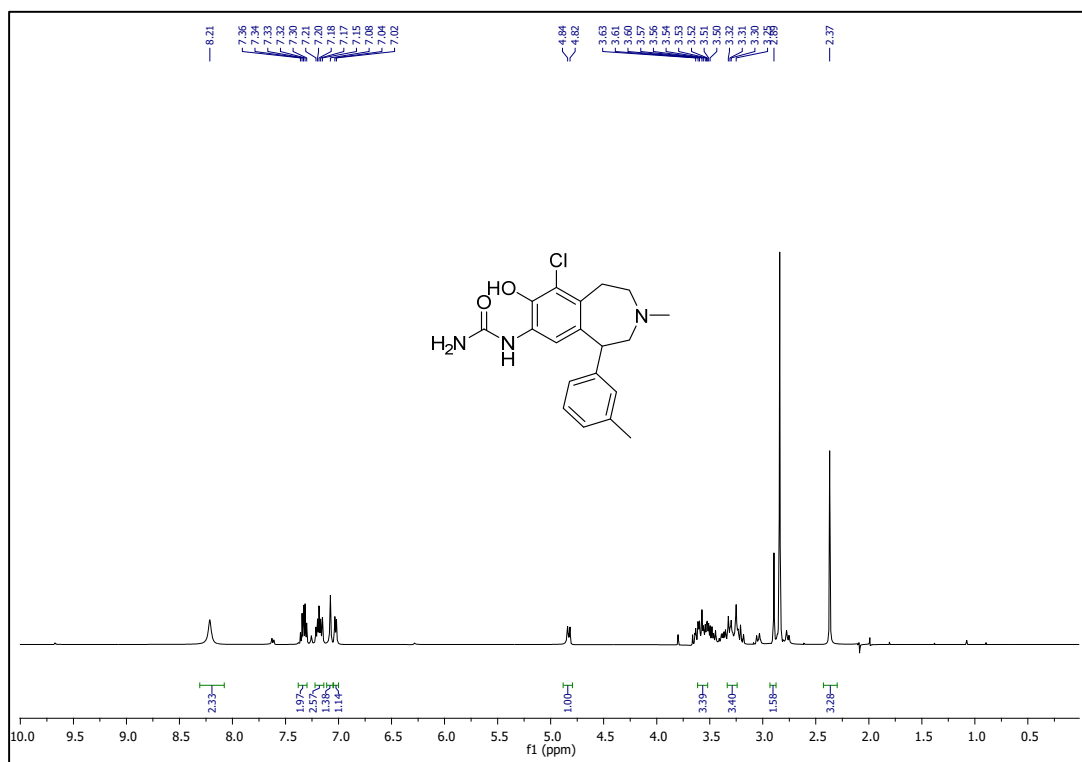
S25

23a



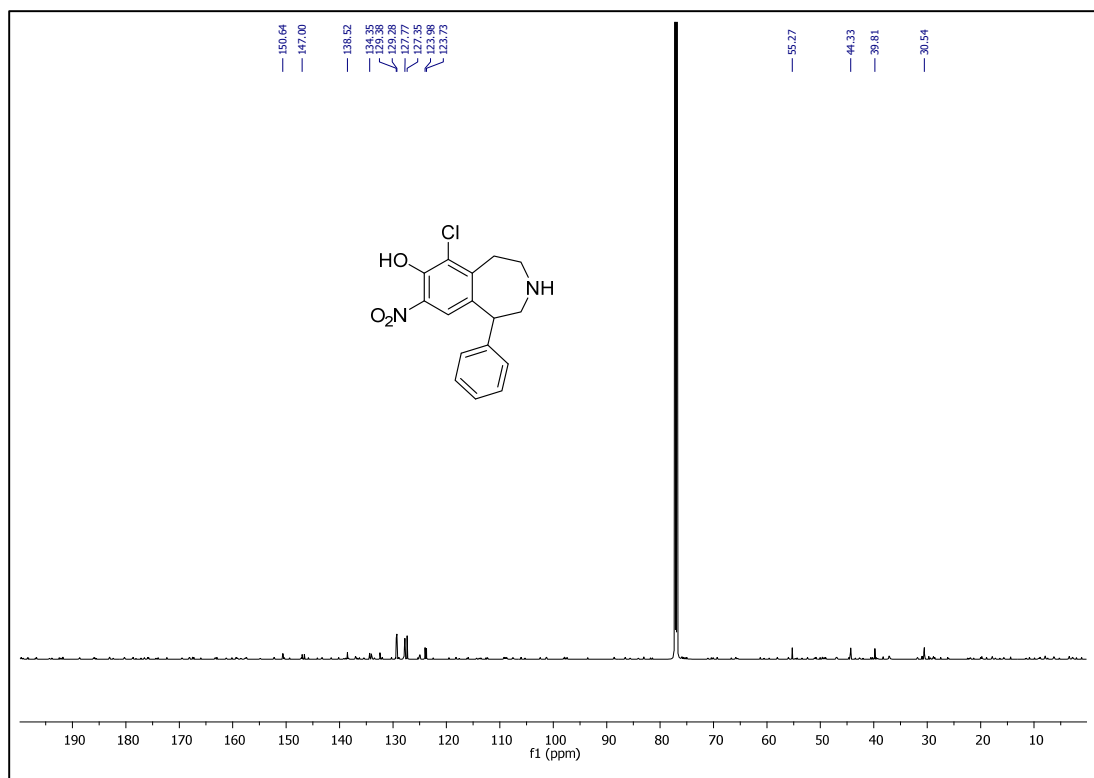
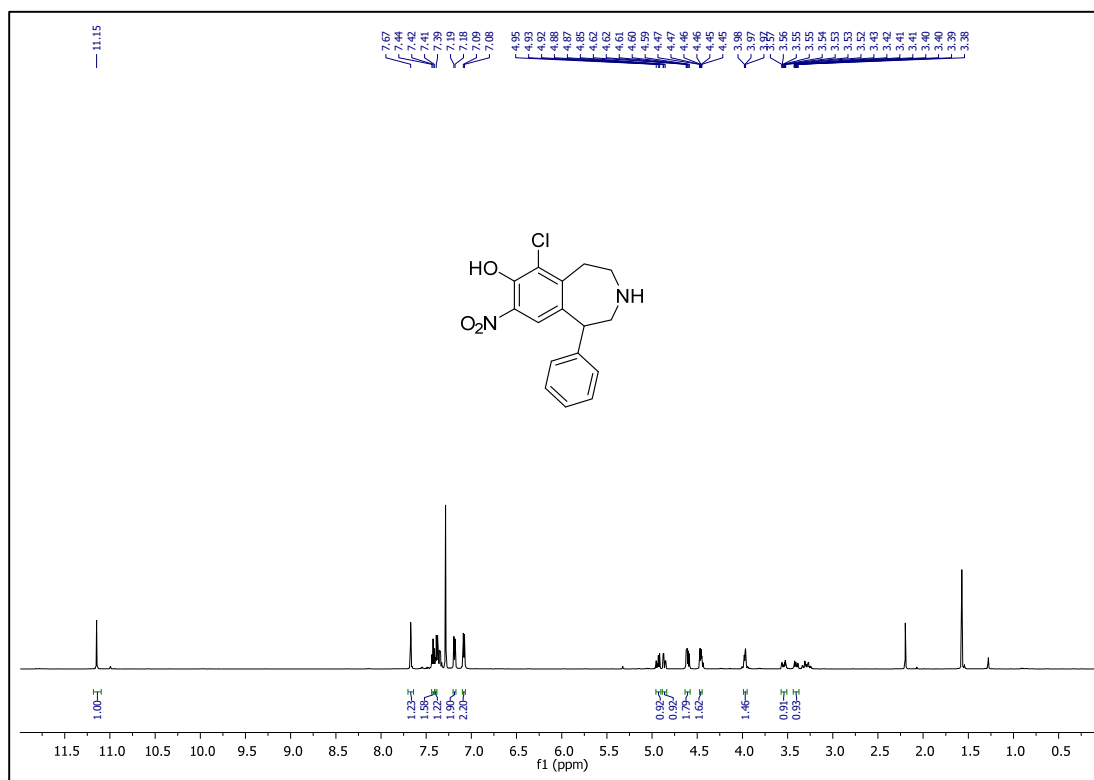
S26

23b



S27

# 24a



24b

