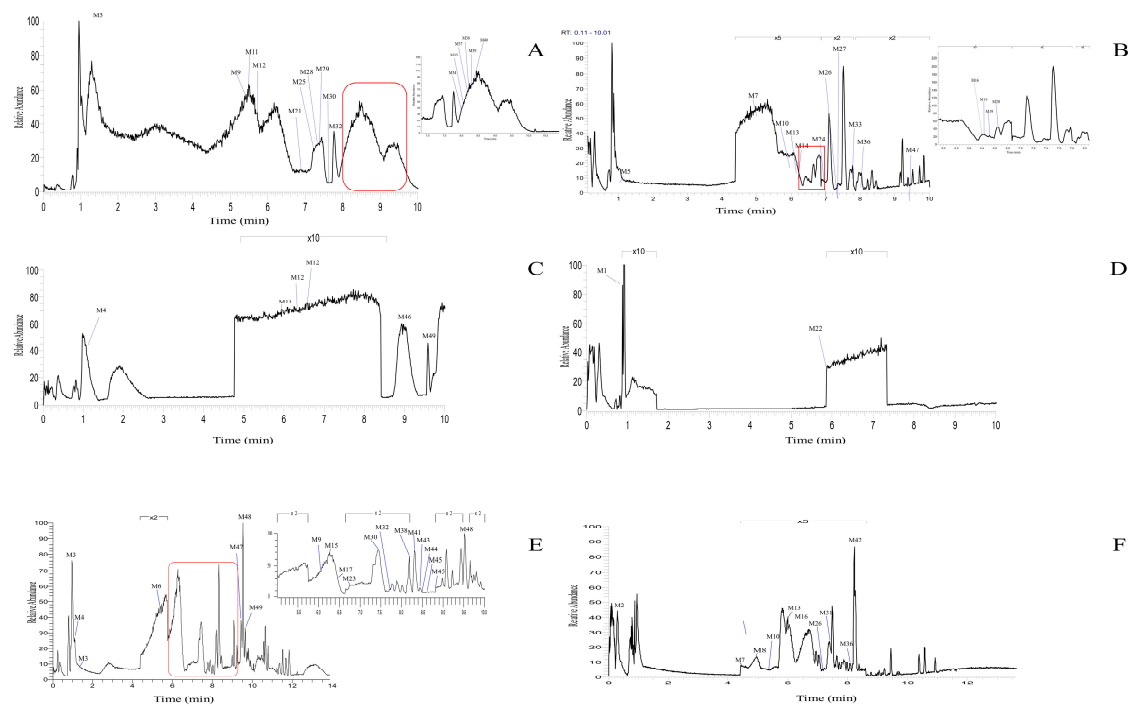


Comprehensive Metabolite Identification of Genipin in Rats Using Ultra-High-Performance Liquid Chromatography Coupled with High Resolution Mass Spectrometry

Zhifeng Cui ^{1,2,†}, Zhe Li ^{3,†}, Weichao Dong ^{3,†}, Lili Qiu ⁴, Jiayu Zhang ^{1,*} and Shaoping Wang ^{1,*}

Supplementary Figure S1. Identification diagram of genipin metabolites.



Supplementary Table S1. Classification of metabolites in fecal fermentation.

Metabolites	0h	12h	24h	36h	48h	60h
M0	√	√	√	√	√	√
M1	√	√	√	√	√	√
M2	×	√	√	√	√	√
M3	×	×	×	×	×	×
M4	√	√	√	√	√	√

M5	×	√	√	√	√	×
M6	×	√	√	√	√	×
M7	×	√	√	√	√	√
M8	×	√	√	√	√	√
M9	×	×	×	×	×	×
M10	×	√	√	√	√	√
M11	×	×	×	×	×	×
M12	×	×	×	×	×	×
M13	×	√	√	√	√	√
M14	×	√	√	√	√	×
M15	×	√	√	√	√	×
M16	×	√	√	√	√	×
M17	×	√	√	√	√	√
M18	×	√	√	√	√	√
M19	×	√	√	√	√	√
M20	×	√	√	√	√	√
M21	×	√	√	√	√	×
M22	×	√	√	√	√	√
M23	×	√	√	√	√	√
M24	×	√	√	√	√	√
M25	×	√	√	√	√	√
M26	×	√	√	√	√	√
M27	×	×	×	×	√	×
M28	×	√	√	√	√	√
M29	×	√	√	√	√	√
M30	×	√	√	√	√	√
M31	×	√	√	√	√	×
M32	×	√	√	√	√	√
M33	×	√	√	√	√	×

M34	×	√	√	√	√	√
M35	×	√	√	√	√	√
M36	×	√	√	√	√	√
M37	×	√	√	√	√	√
M38	×	×	√	√	√	√
M39	×	√	√	√	√	√
M40	×	√	√	√	√	×
M41	×	√	√	√	√	√
M42	×	√	√	√	√	√
M43	×	√	√	√	√	√
M44	×	√	√	√	√	√
M45	×	√	√	√	√	√
M46	×	√	√	√	√	√
M47	×	×	×	×	√	×
M48	×	×	×	×	√	√
M49	×	√	√	√	√	√
