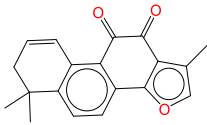
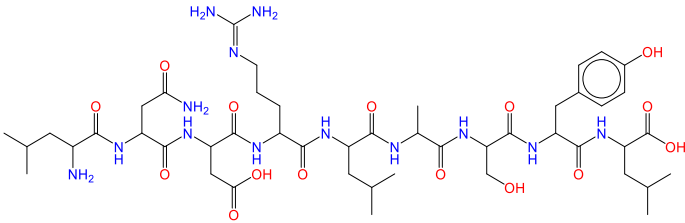
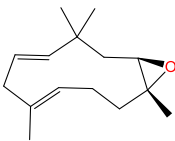
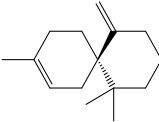
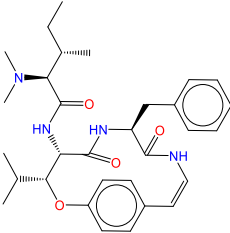
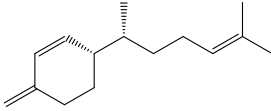
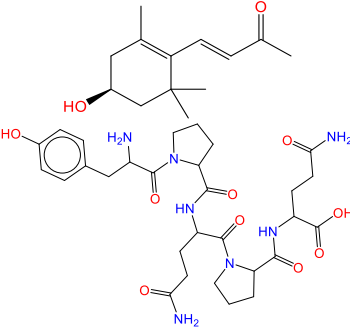
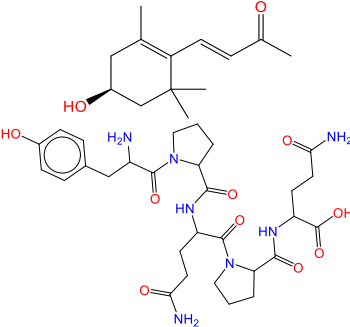
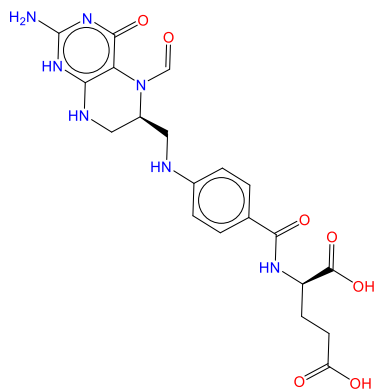
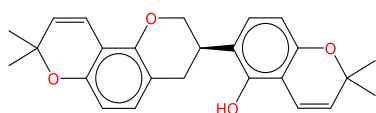


Table S10. Selection of PDB crystal complex structures for docking with screened medicine and food homologous (MFH) candidates.

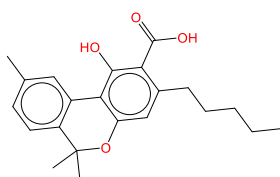
Molecular structures	Molecules	PDB	Protein
	cmp_A1	5KIR	COX2
	cmp_A2	6BL3	COX2
	cmp_A3	4PH9	COX2
	cmp_A4	4PH9	COX2
	cmp_A5	6BL4	COX2
	cmp_A6	4PH9	COX2
	cmp_A7	4PH9	COX2
	cmp_A8	6BL4	COX2



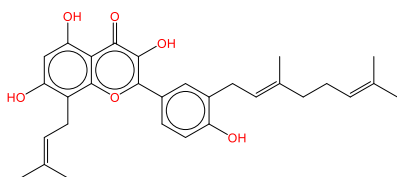
cmp_A9 6BL4 COX2



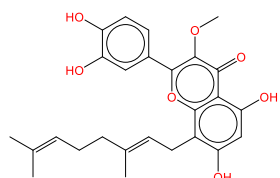
cmp_A10 6BL3 COX2



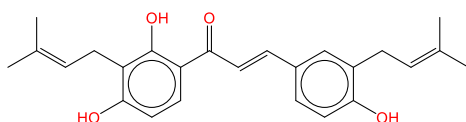
cmp_B1 4YL0 mPGES1



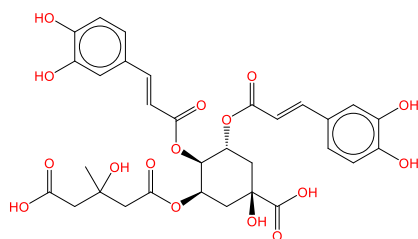
cmp_B2 4YL1 mPGES1



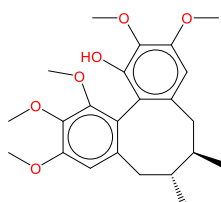
cmp_B3 4YL1 mPGES1



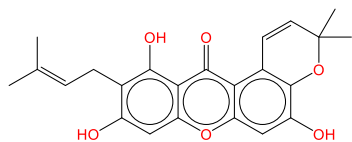
cmp_B4 4AL1 mPGES1



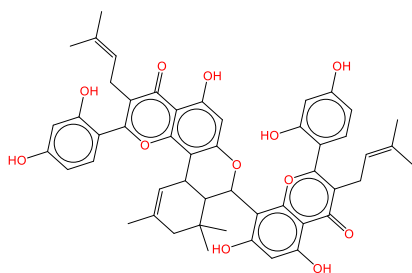
cmp_B5 4AL1 mPGES1



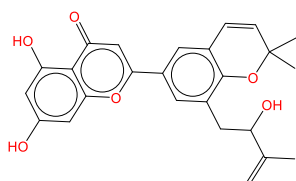
cmp_B6 4YL0 mPGES1



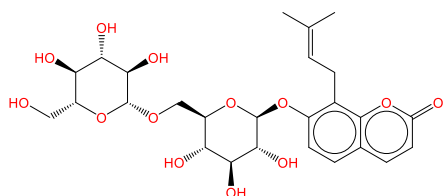
cmp_B7 4YL0 mPGES1



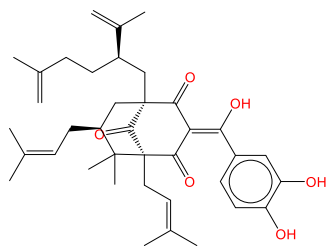
cmp_B8 5TL9 mPGES1



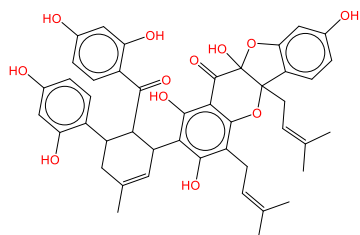
cmp_B9 5TL9 mPGES1



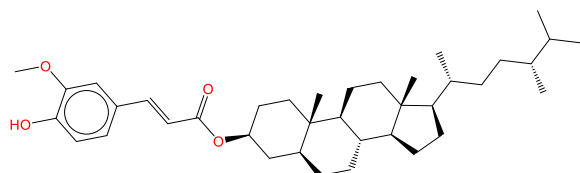
cmp_B10 5K0I mPGES1



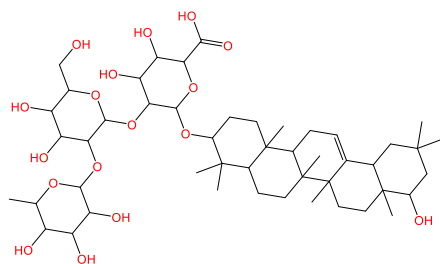
cmp_B11 4YL0 mPGES1



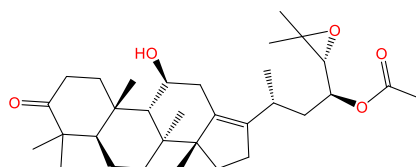
cmp_B12 4YL0 mPGES1



cmp_B13 4YL0 mPGES1



cmp_B14 4YL0 mPGES1



cmp_B15 4YL0 mPGES1
