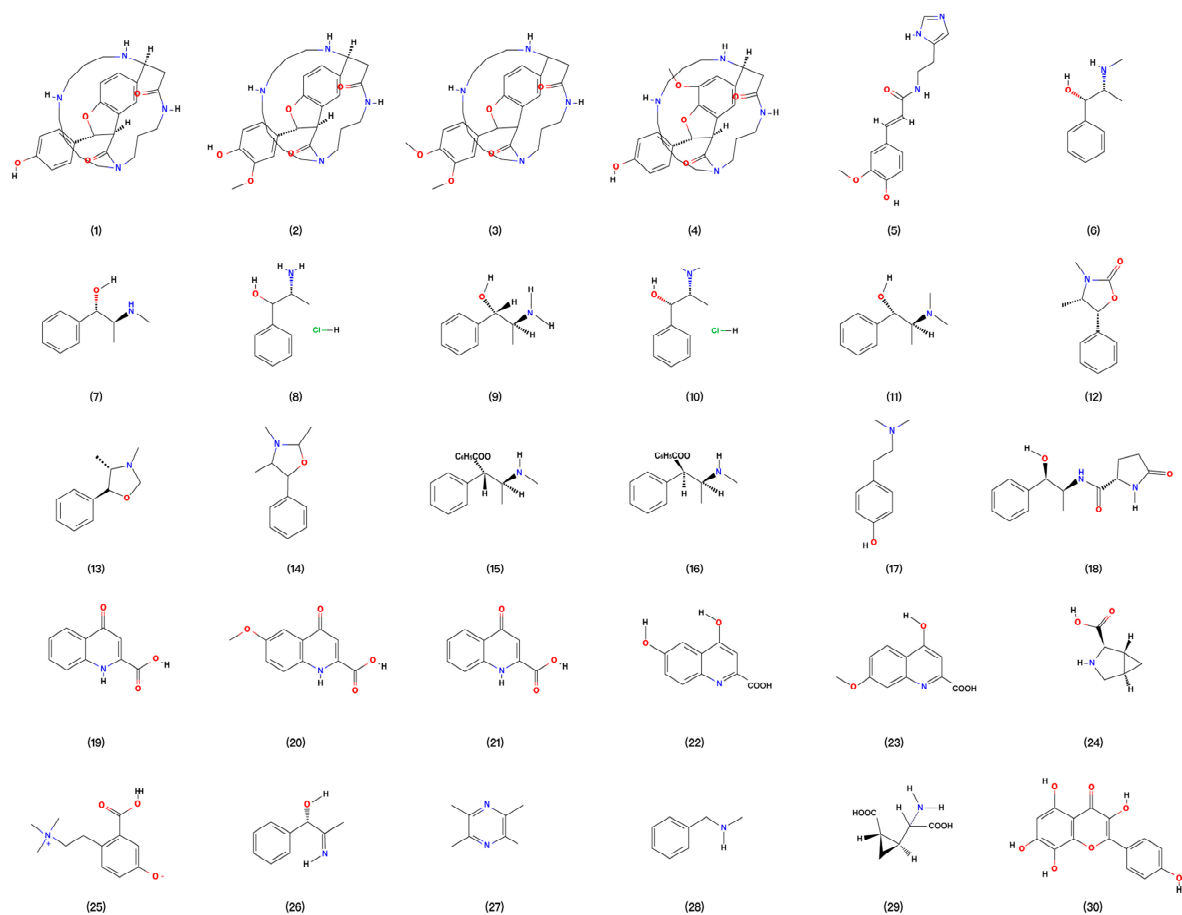
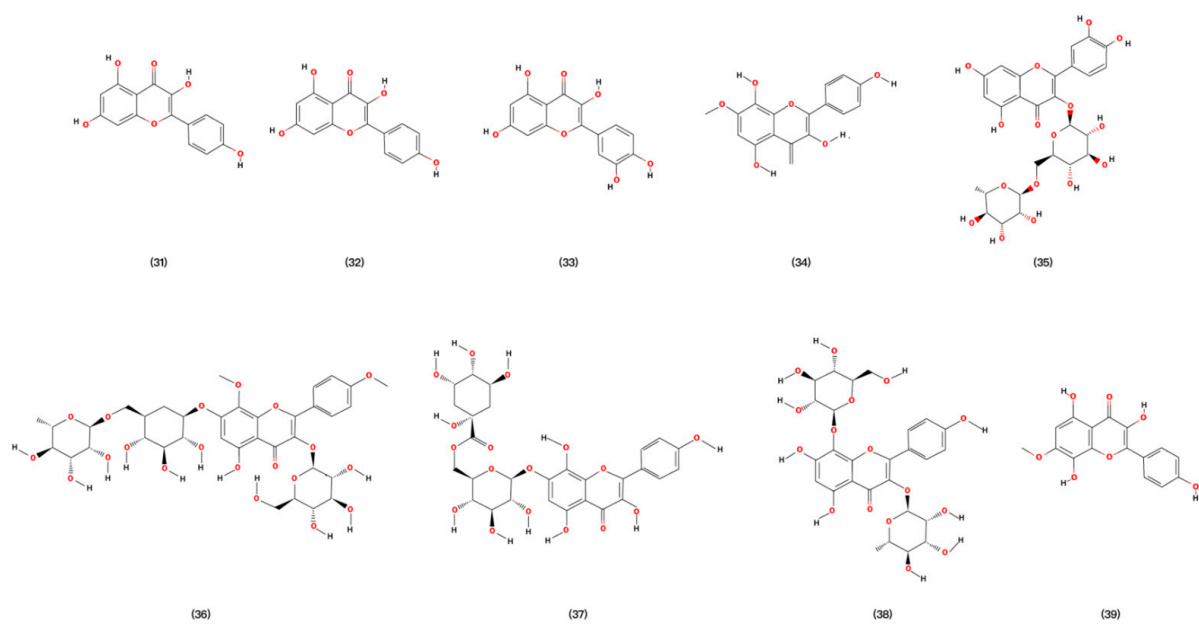
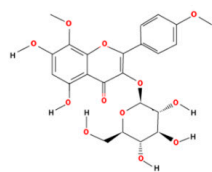


# Supplementary Material

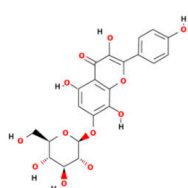


**Figure S1.** Alkaloids isolated from *Ephedra sinica* Stapf.

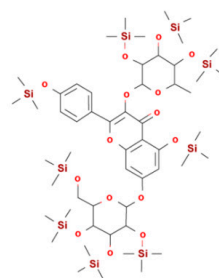




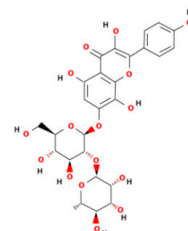
(40)



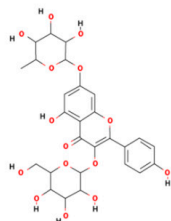
(41)



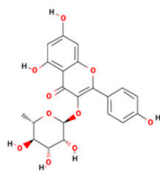
(42)



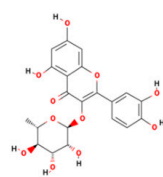
(43)



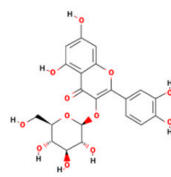
(44)



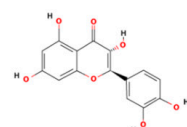
(45)



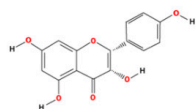
(46)



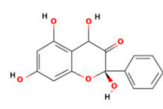
(47)



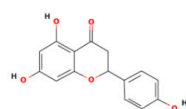
(48)



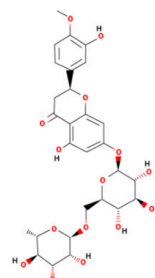
(49)



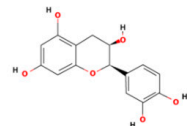
(50)



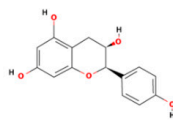
(51)



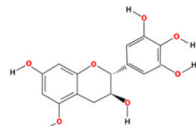
(52)



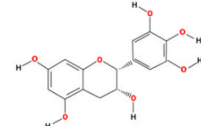
(53)



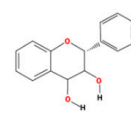
(54)



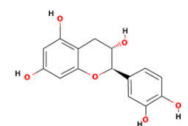
(55)



(56)

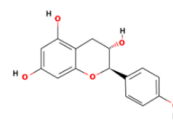


(57)

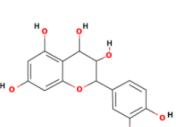


(58)

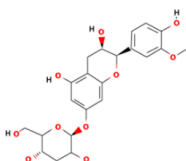
..



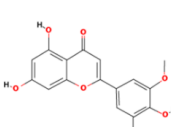
(59)



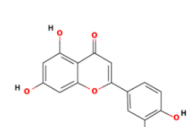
(60)



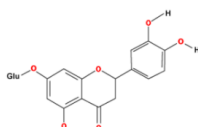
(61)



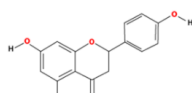
(62)



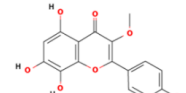
(63)



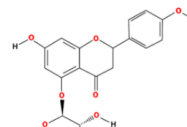
(64)



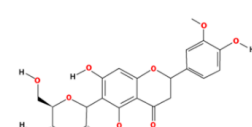
(65)



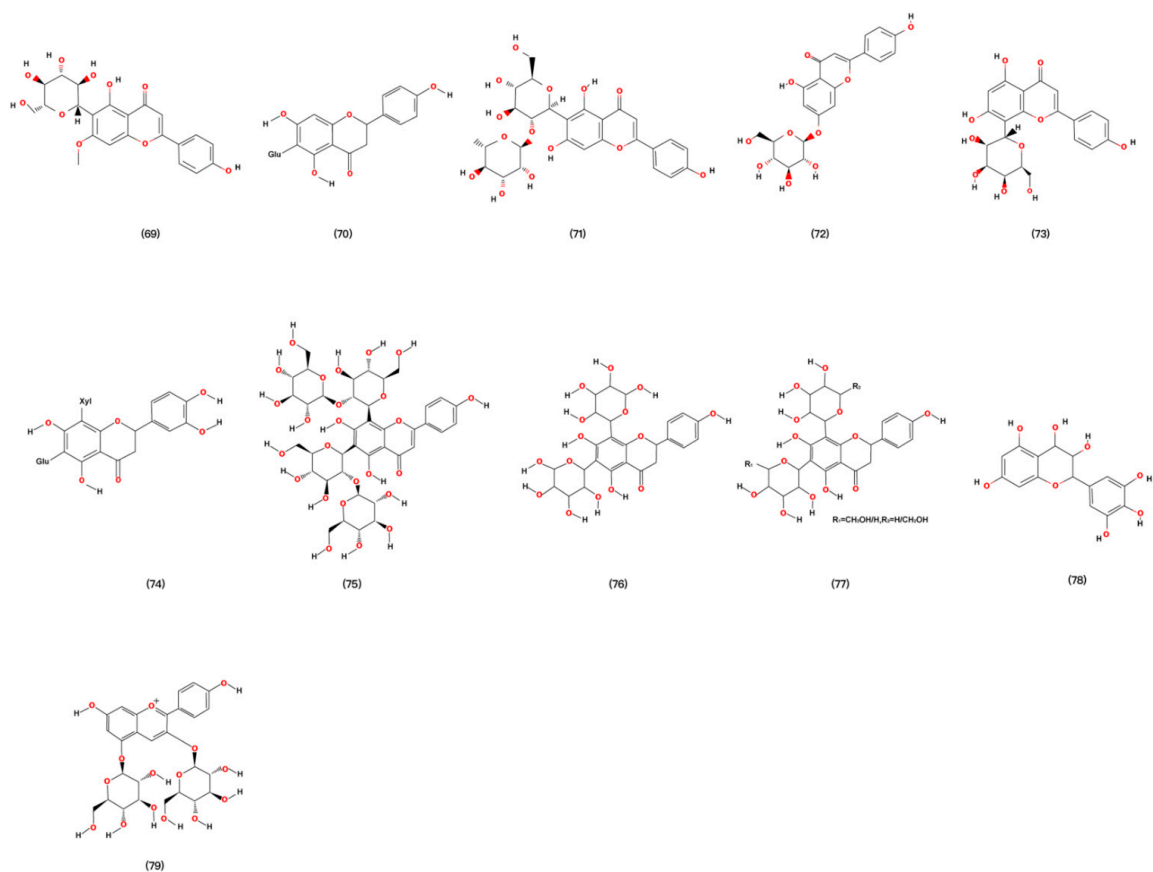
(66)



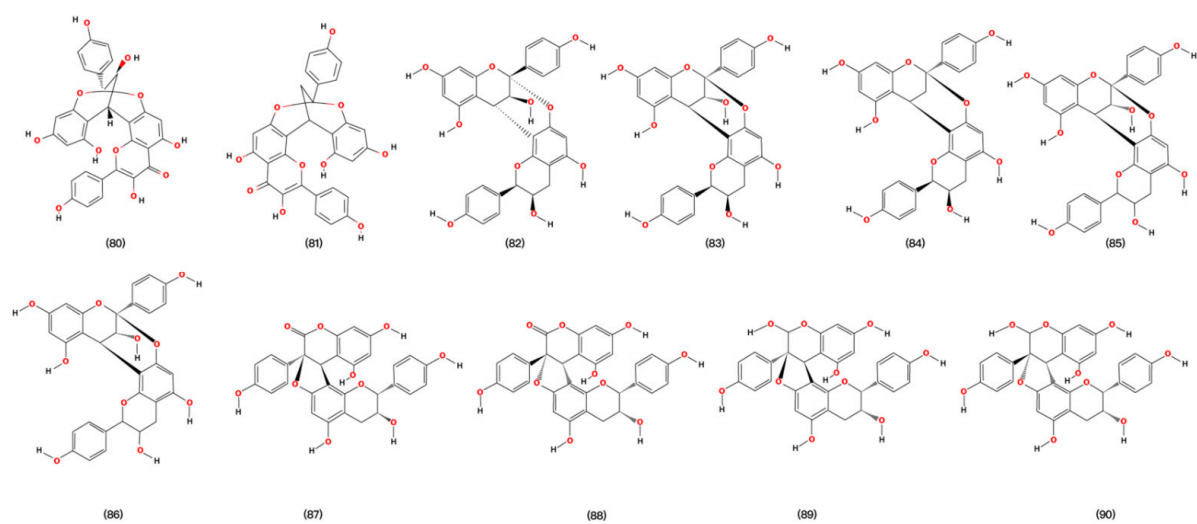
(67)

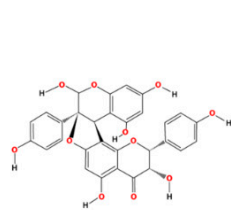


(68)

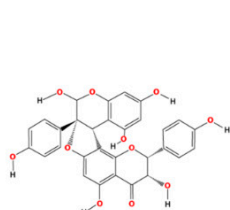


**Figure S2.** Flavonoids isolated from *Ephedra sinica* Stapf.

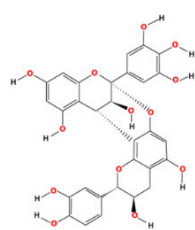




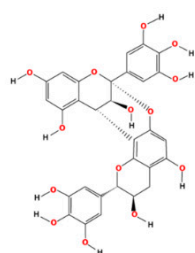
(91)



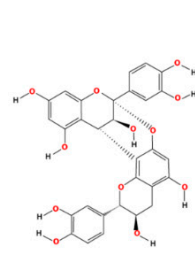
(92)



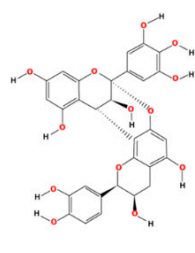
(93)



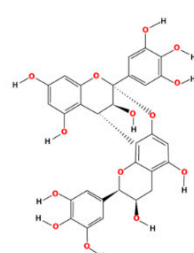
(94)



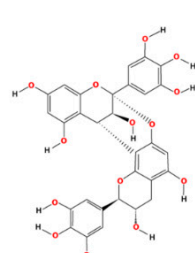
(95)



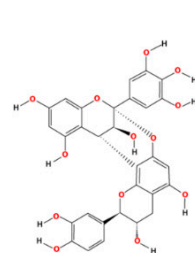
(96)



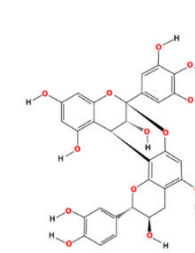
(97)



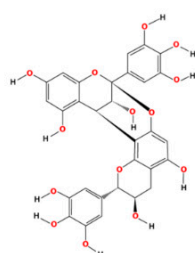
(98)



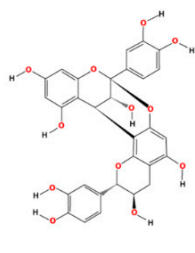
(99)



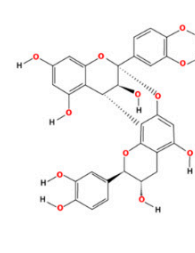
(100)



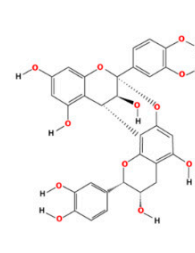
(101)



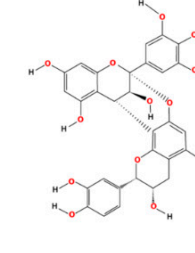
(102)



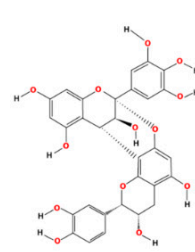
(103)



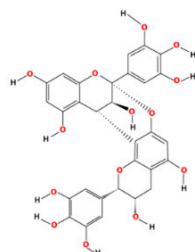
(104)



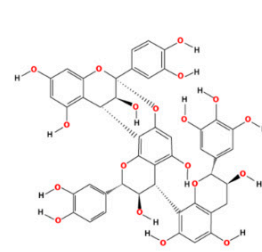
(105)



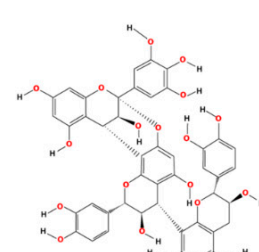
(106)



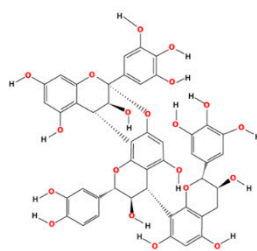
(107)



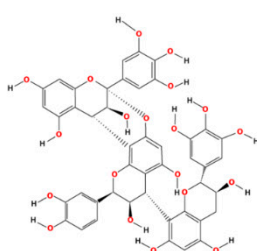
(108)



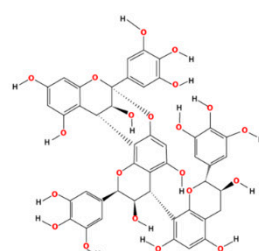
(109)



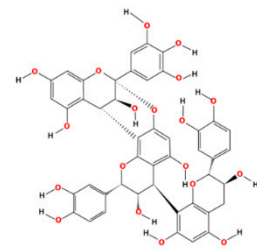
(110)



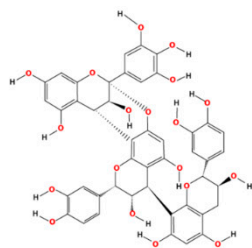
(111)



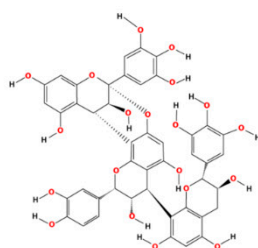
(112)



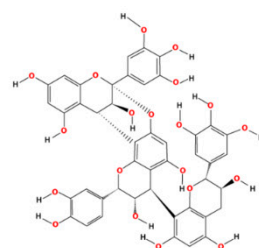
(113)



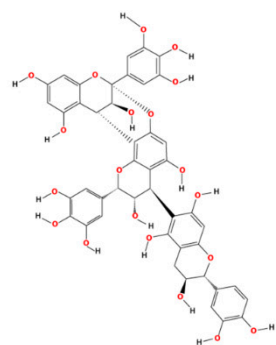
(114)



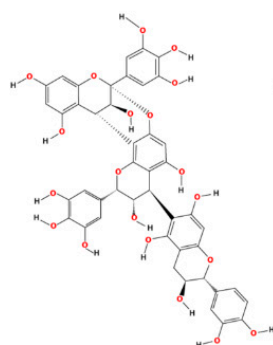
(115)



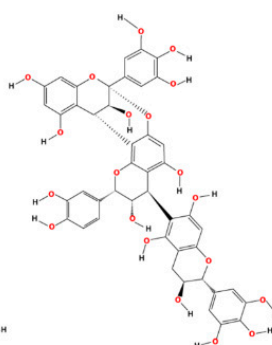
(116)



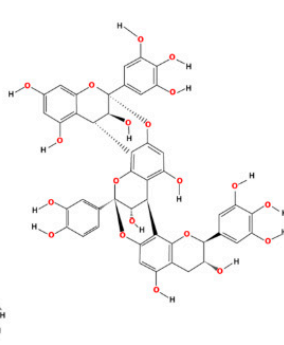
(117)



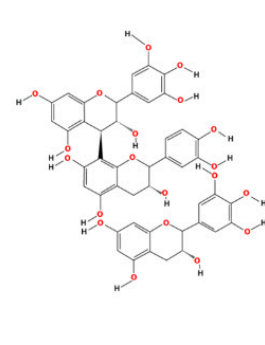
(118)



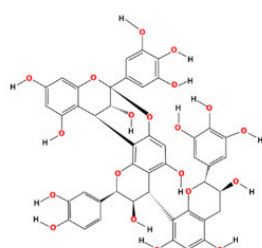
(119)



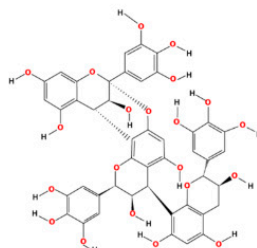
(120)



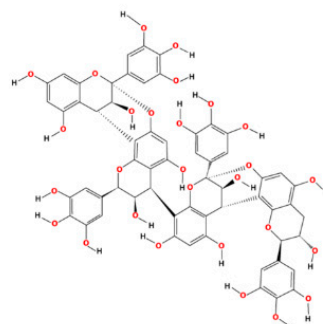
(121)



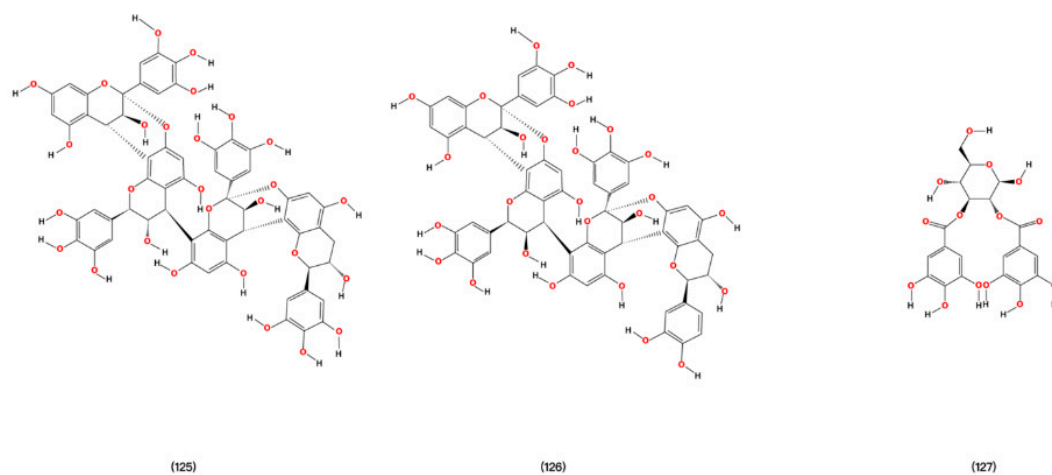
(122)



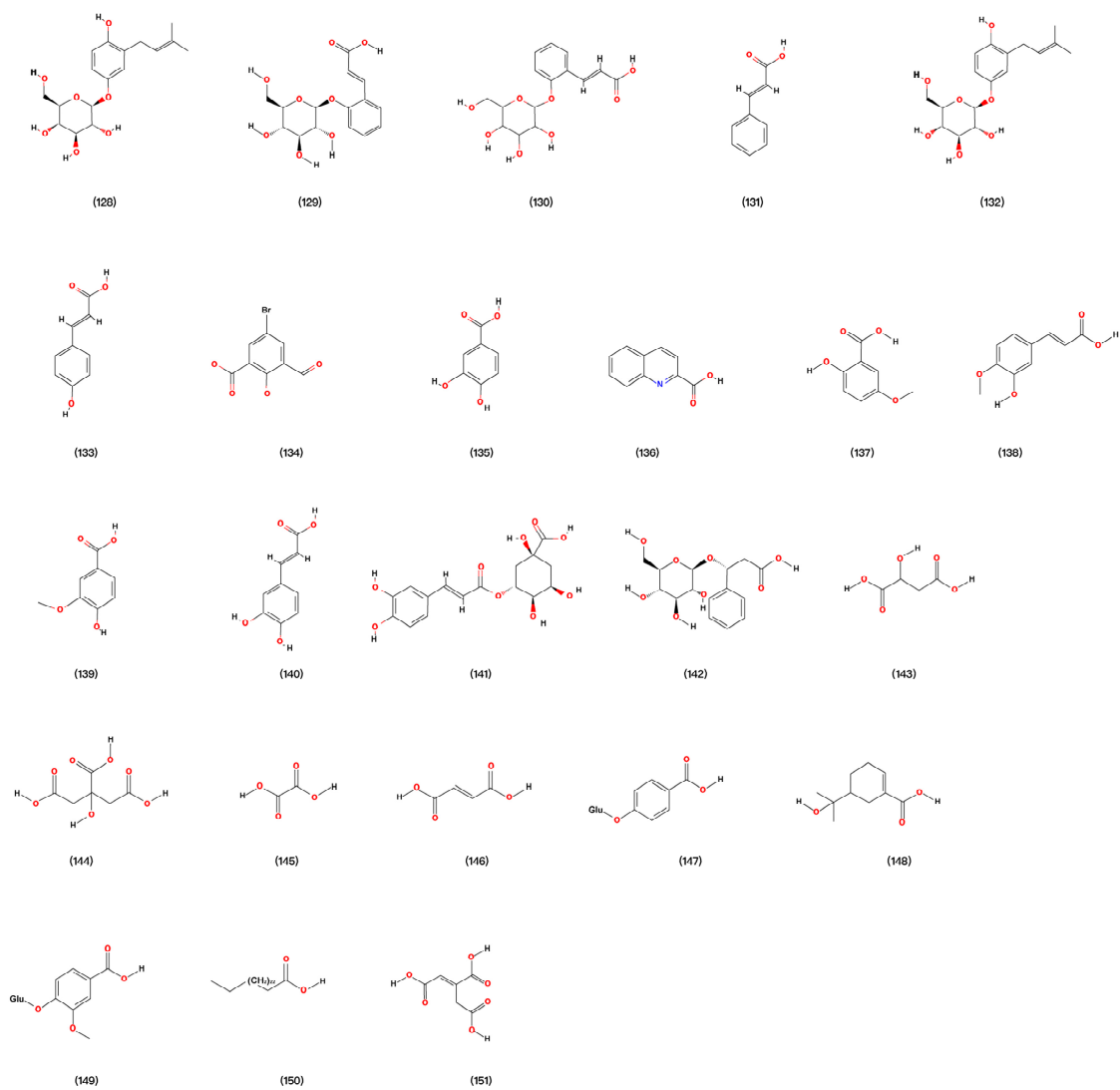
(123)



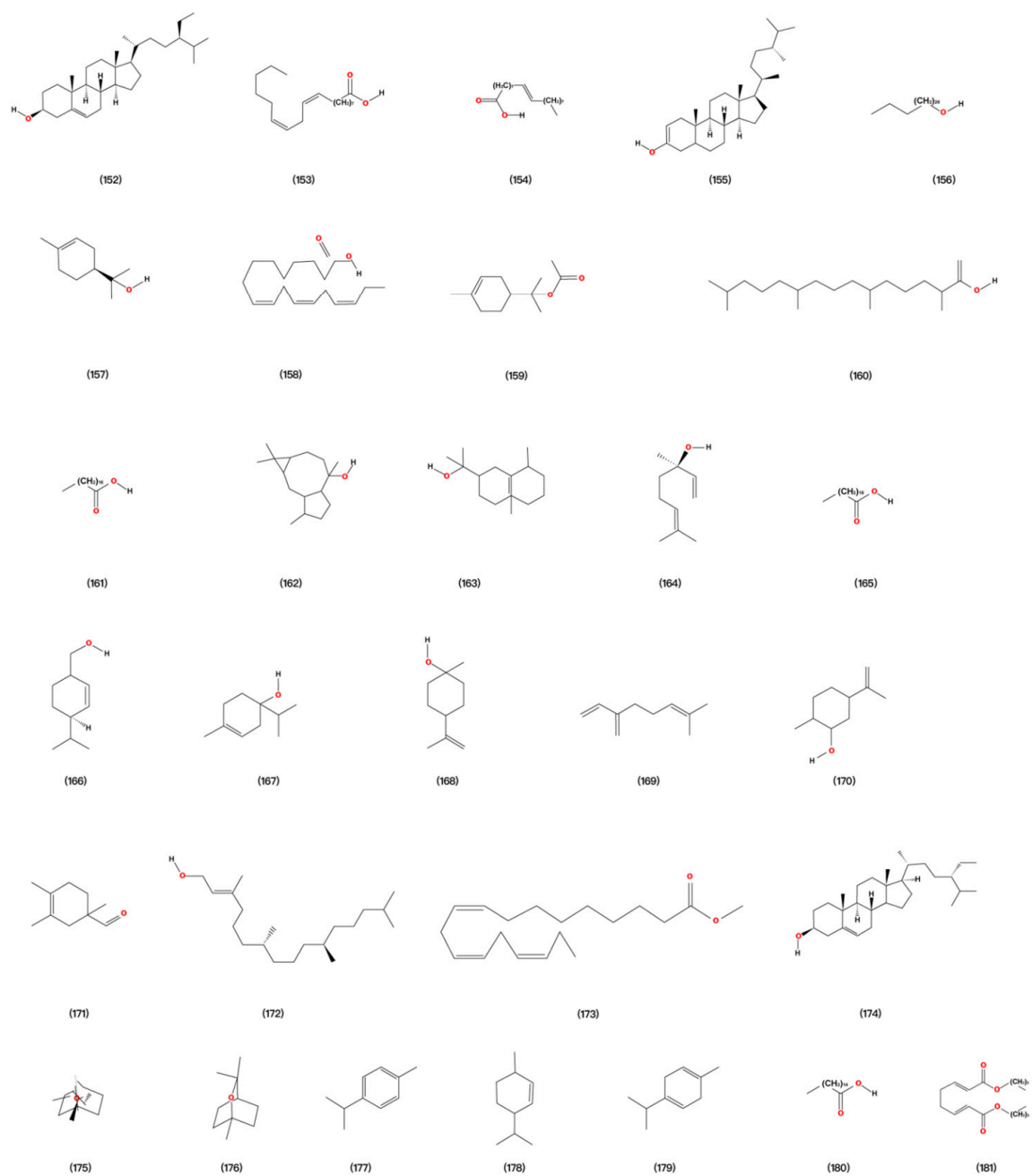
(124)



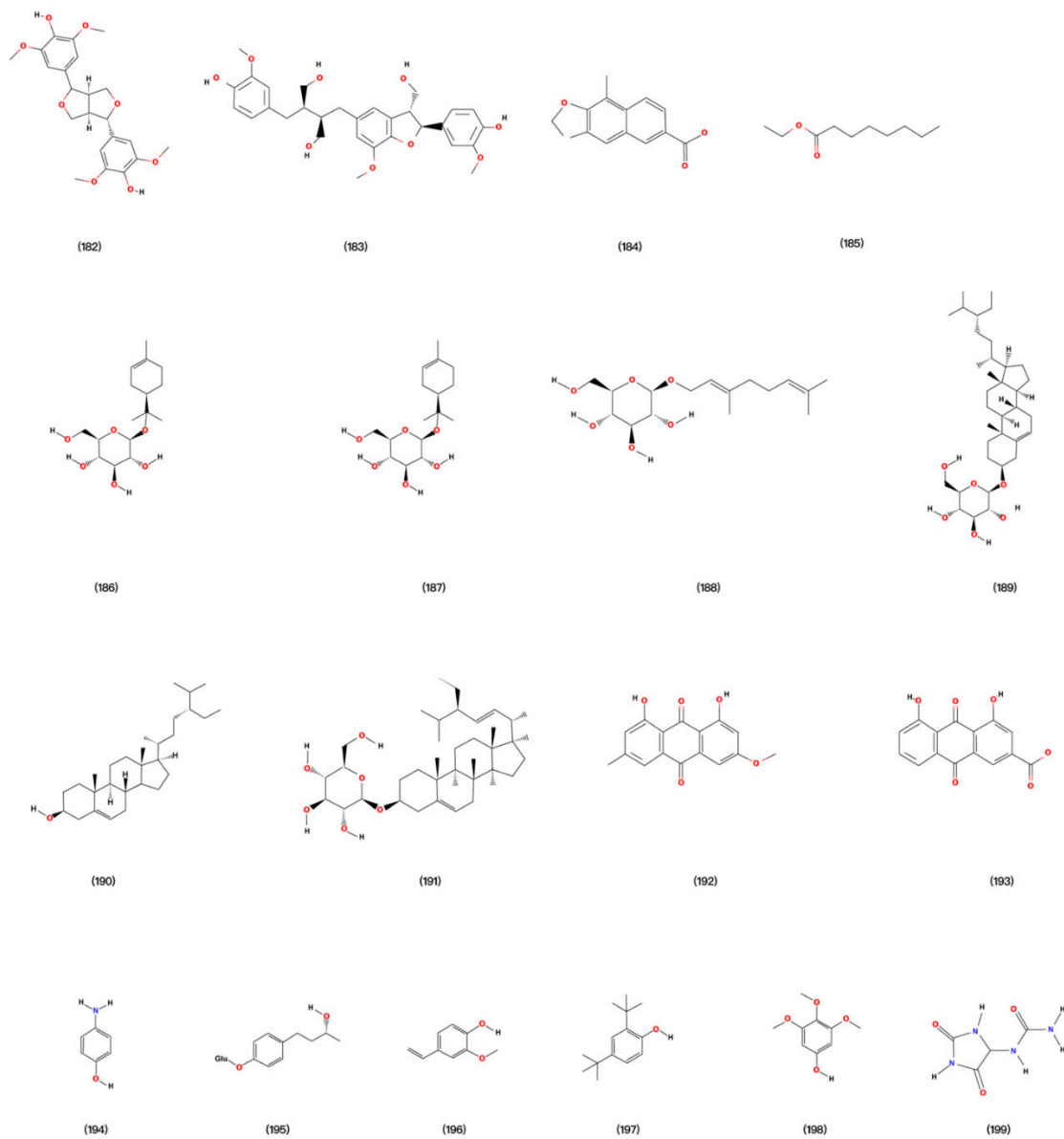
**Figure S3.** Tannins isolated from *Ephedra sinica* Stapf.



**Figure S4.** Organic phenolic acids isolated from *Ephedra sinica* Stapf.



**Figure S5.** Organic volatile essential oils isolated from *Ephedra sinica* Stapf.



**Figure S6.** Other ingredients isolated from *Ephedra sinica* Stapf.