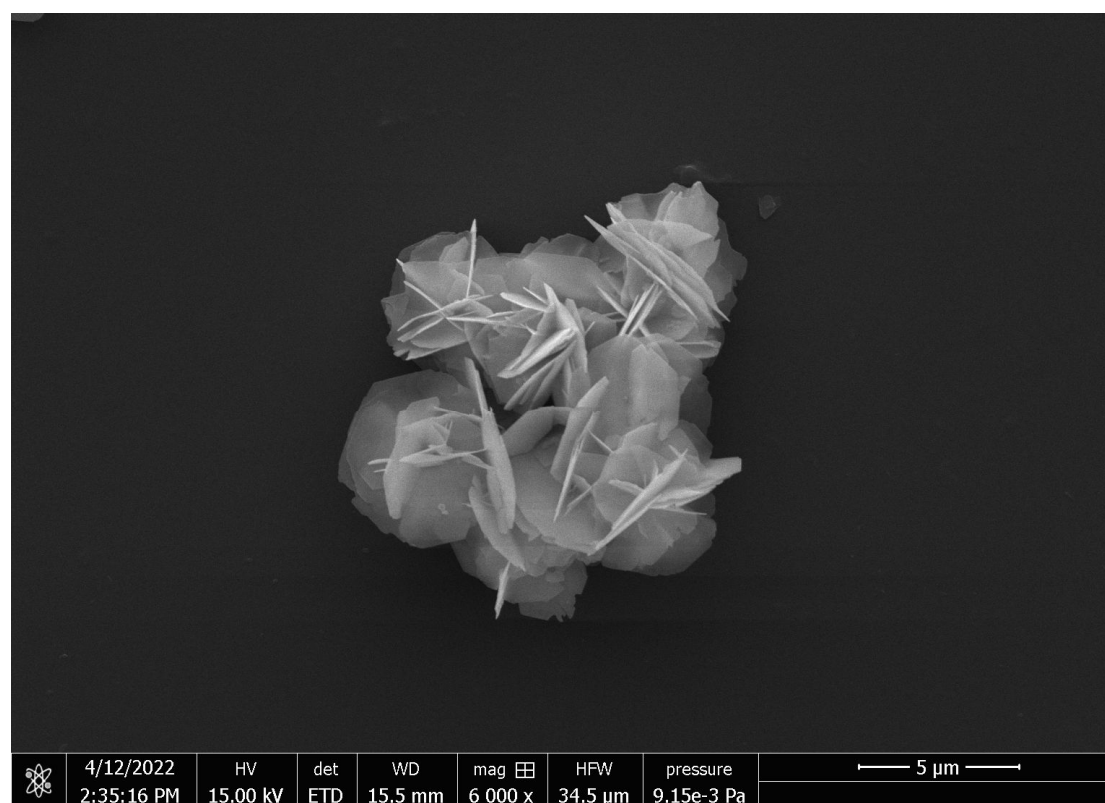


Table S1. Immobilized enzyme efficiency

Materials	Amount of Gox (mg)	Immobilized enzyme Efficiency (%)	Amount of immobilized enzyme (mg)
FeS <sub>2</sub>	0.1	15.2	0.0312
FeS <sub>2</sub>	0.3	16.6	0.0738
FeS <sub>2</sub>	0.5	20.3	0.1015
FeS <sub>2</sub>	0.75	12.2	0.0915
FeS <sub>2</sub>	1	9.8	0.098
FeS <sub>2</sub> /CS	0.1	70.2	0.0702
FeS <sub>2</sub> /CS	0.3	75.4	0.2262
FeS <sub>2</sub> /CS	0.5	80.3	0.4015
FeS <sub>2</sub> /CS	0.75	51.5	0.35625
FeS <sub>2</sub> /CS	1	30.3	0.303

Figure S1. Morphology of FeS<sub>2</sub>

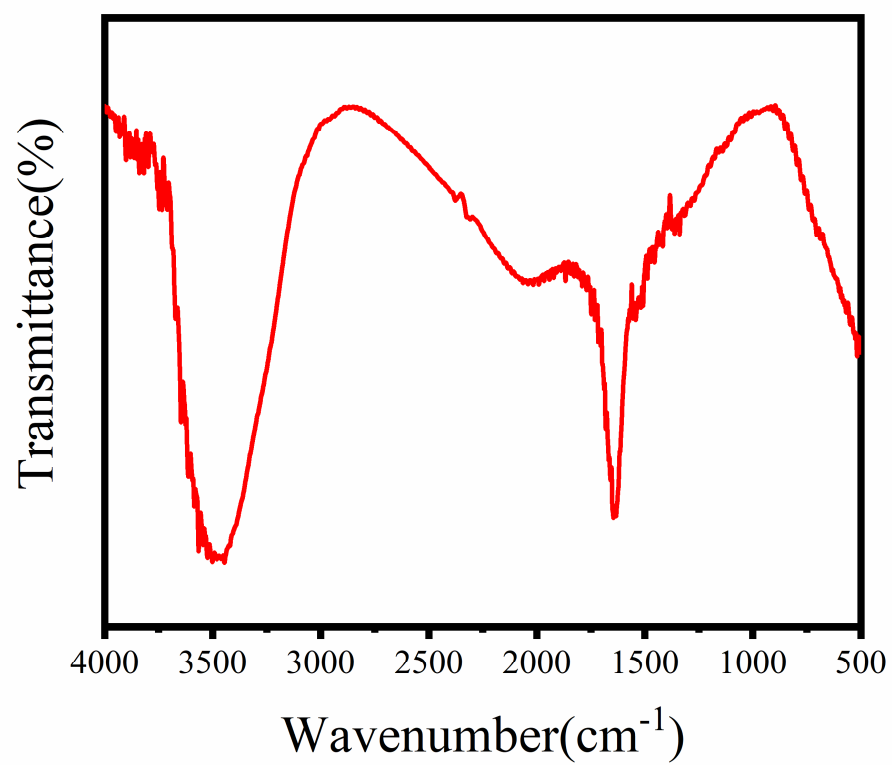


Figure S2. FTIR absorption spectrum of Gox.

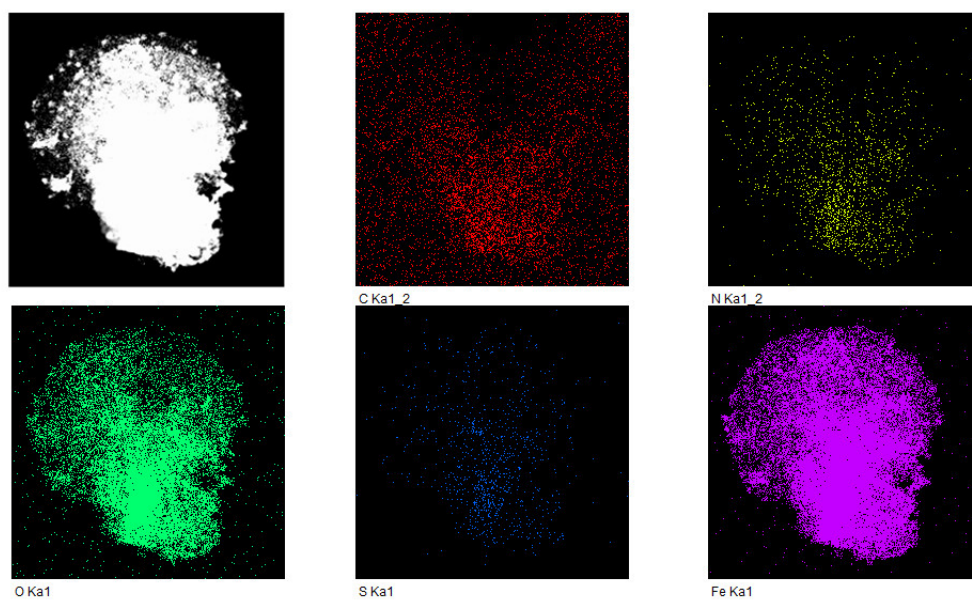


Figure S3. Elemental distribution of FeS<sub>2</sub>/CS@Gox.

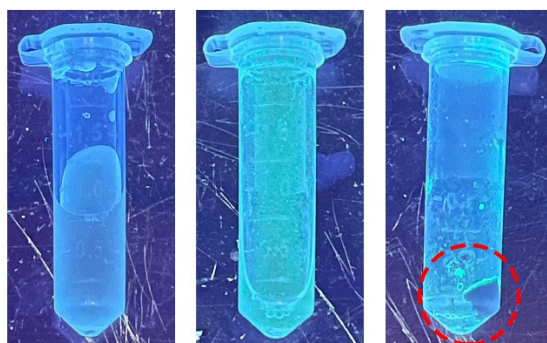


Figure S4. The Color of FeS<sub>2</sub>/CS@Gox under UV light.

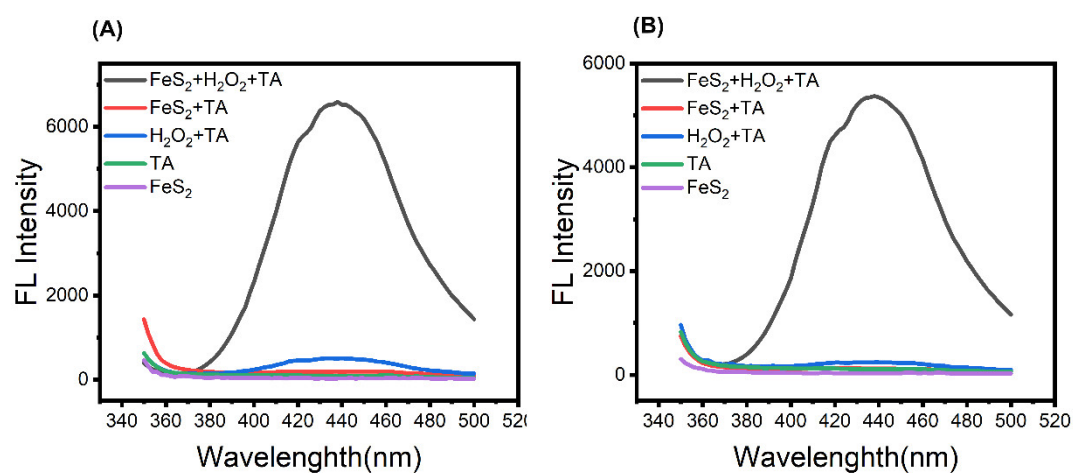


Figure S5. Hydroxyl radicals produced by FeS<sub>2</sub>.

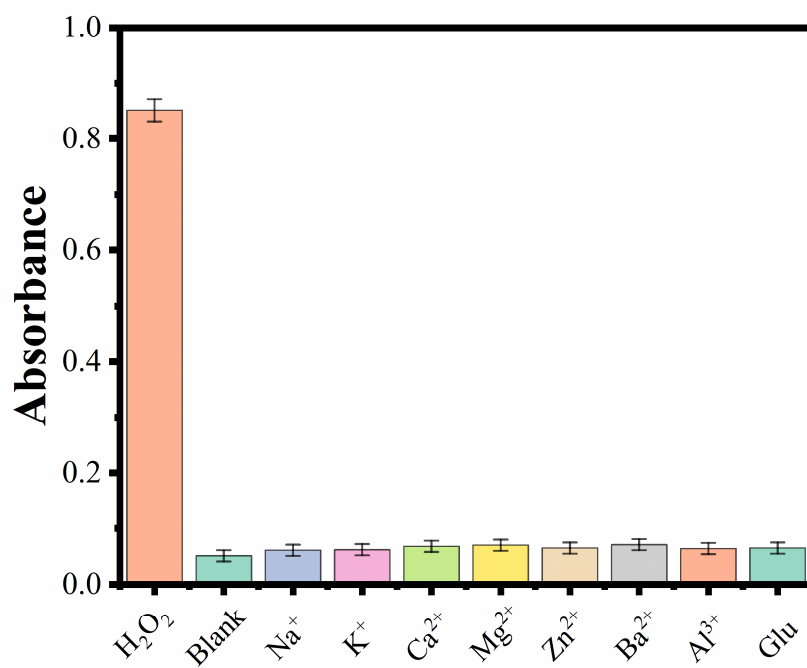


Figure S6. Selectivity of FeS<sub>2</sub> to H<sub>2</sub>O<sub>2</sub>.

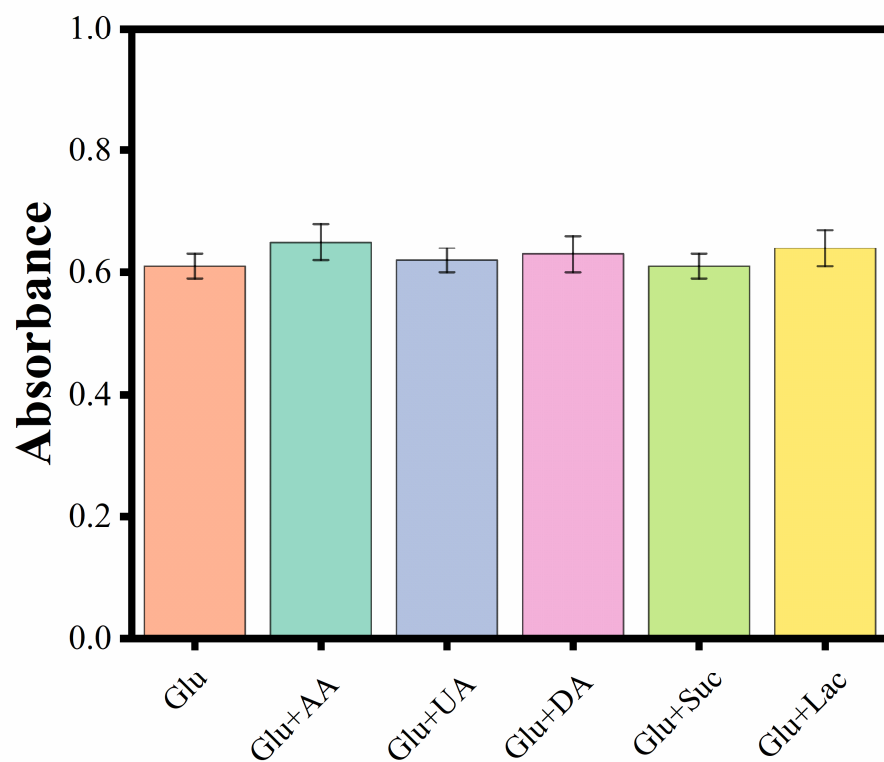


Figure S7. Selectivity of FeS<sub>2</sub>/CS@Gox to glucose.

AA: ascorbic acid; UA: uric acid; DA: dopamine; Suc: sucrose; Lac: lactic acid.