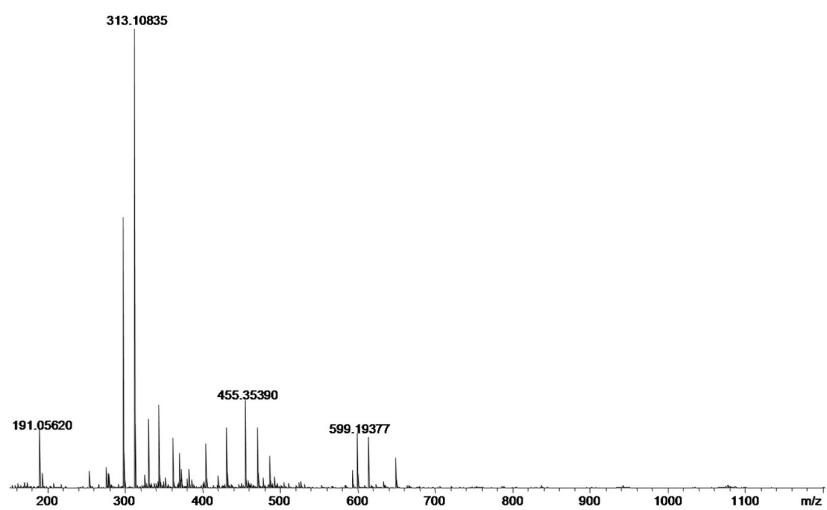
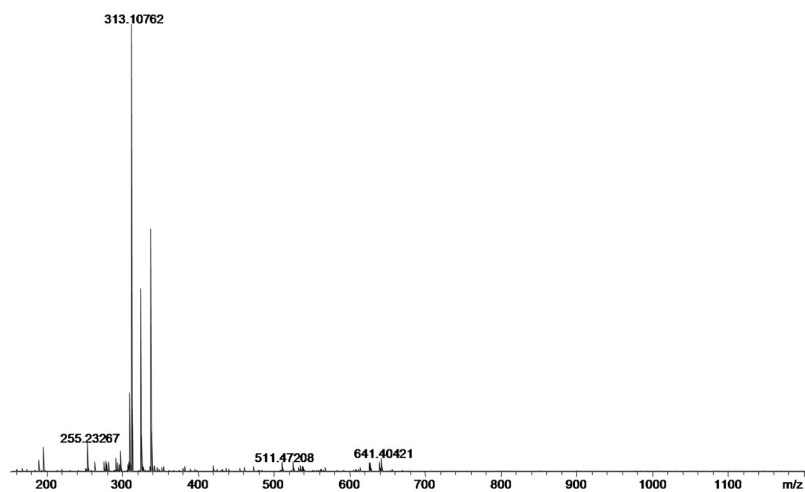


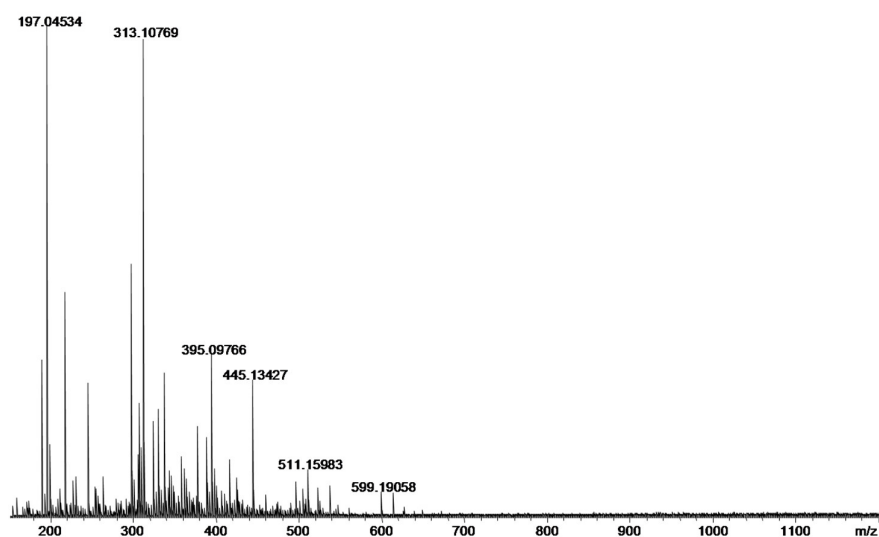
A)



B)



C)



D)

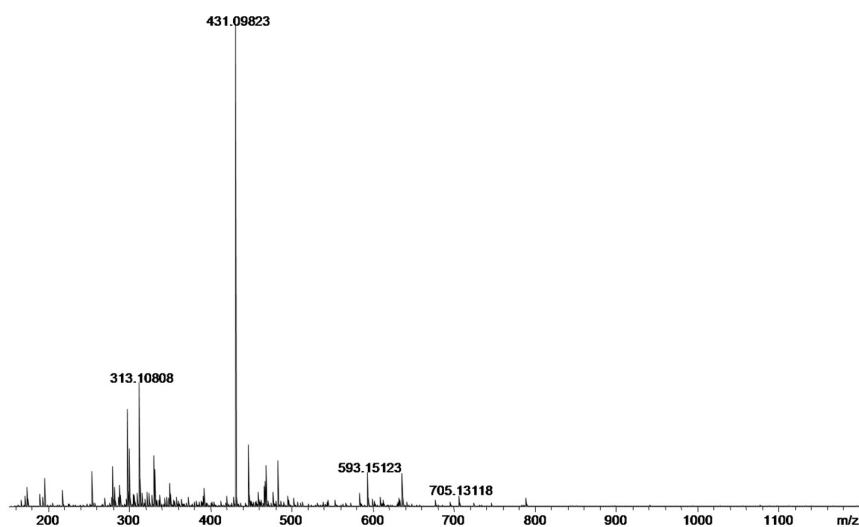


Figure S1: NMR spectrum of crude extract and partitions. The 19 crude extract (A) and partitions, HP (B), CP (C) and AEP (D) were analyzed using the negative ion-mode Electrospray Ionization Fourier Transform Ion Cyclotron Resonance Mass Spectrometer (ESI (-) FT-ICR MS, model 9.4 T Solarix, Bruker Daltonics Bremen). All mass spectra were externally calibrated using NaTFA (m/z from 200 to 2000). The degree of unsaturation for each molecule can be deduced directly from its DBE value according to the equation $DBE = c - h/2 + n/2 + 1$, where c , h , and n are the numbers of carbon atoms, hydrogens, and nitrogen in the molecular formula, respectively. The FT-ICR mass spectrum was acquired and processed using Compass Data Analysis software. The elemental compositions of the present compounds were determined by measuring the m/z ratio values.