

Supporting Information for

Payload Release Profile and Anti-Cancer Stem Cell Properties of Compositionally Different Polymeric Nanoparticles Containing a Copper(II) Complex

Ginevra Passeri, Joshua Northcote-Smith and Kogularamanan Suntharalingam *

School of Chemistry, University of Leicester, Leicester LE1 7RH, UK

* Correspondence: k.suntharalingam@leicester.ac.uk; Tel.: +44-(0)116-294-4562

Table of Content

- Figure S1.** Dynamic light scattering size distribution of **1:1 NP¹⁵** suspended in water. Size refers to diameter of nanoparticles in nm.
- Figure S2.** Dynamic light scattering size distribution of **4:1 NP¹⁵** suspended in water. Size refers to diameter of nanoparticles in nm.
- Figure S3.** Dynamic light scattering size distribution of empty PEG–PLGA (5000:10,000 Da, 1:1 LA:GA) nanoparticles suspended in water. Size refers to diameter of nanoparticles in nm.
- Figure S4.** Dynamic light scattering size distribution of empty PEG–PLGA (5000:10,000 Da, 4:1 LA:GA) nanoparticles suspended in water. Size refers to diameter of nanoparticles in nm.
- Figure S5.** Variation in **1:1 NP¹⁵** diameter upon incubation in water and mammary epithelial growth medium (MEGM) over the course of 72 h at 37 °C.
- Figure S6.** Variation in **4:1 NP¹⁵** diameter upon incubation in water and mammary epithelial growth medium (MEGM) over the course of 72 h at 37 °C.
- Figure S7.** Copper content in HMLER-shEcad cells upon pre-incubation with chloroquine (100 µM for 2 h) and then treatment with **1:1 NP¹⁵** and **4:1 NP¹⁵** (both 0.15 µM for 8 h) at 37 °C.
- Figure S8.** The amount of copper released from **1:1 NP¹⁵** and **4:1 NP¹⁵** upon incubation in sodium acetate buffer (pH 5.2) over the course of 72 h at 37 °C.
- Figure S9.** Representative dose-response curves for the treatment of HMLER and HMLER-shEcad cells with **1:1 NP¹⁵**.
- Figure S10.** Representative dose-response curves for the treatment of HMLER and HMLER-shEcad cells with **4:1 NP¹⁵**.
- Figure S11.** Representative dose-response curves for the treatment of HMLER and HMLER-shEcad cells with empty PEG–PLGA (5000:10,000 Da, 1:1 LA:GA) nanoparticles.

Figure S12. Representative dose-response curves for the treatment of HMLER and HMLER-shEcad cells with empty PEG-PLGA (5000:10,000 Da, 4:1 LA:GA) nanoparticles.

Figure S13. Representative dose-response curves for the treatment of HMLER-shEcad mammospheres with empty PEG-PLGA (5000:10,000 Da, 1:1 LA:GA) nanoparticles or empty PEG-PLGA (5000:10,000 Da, 4:1 LA:GA) nanoparticles.

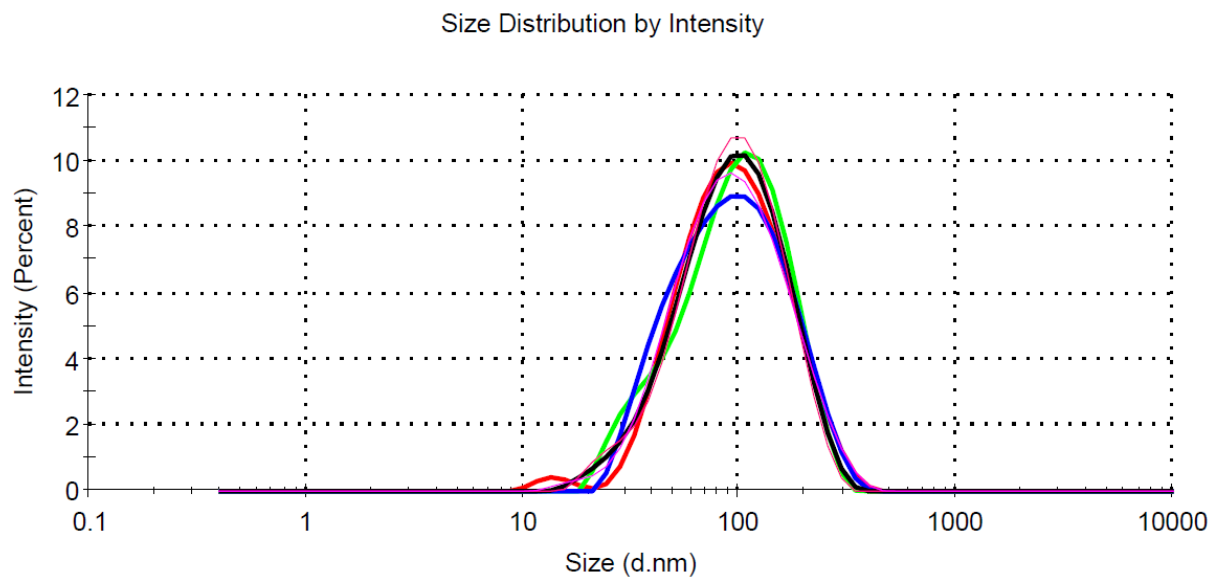


Figure S1. Dynamic light scattering size distribution of **1:1 NP¹⁵** suspended in water. Size refers to diameter of nanoparticles in nm.

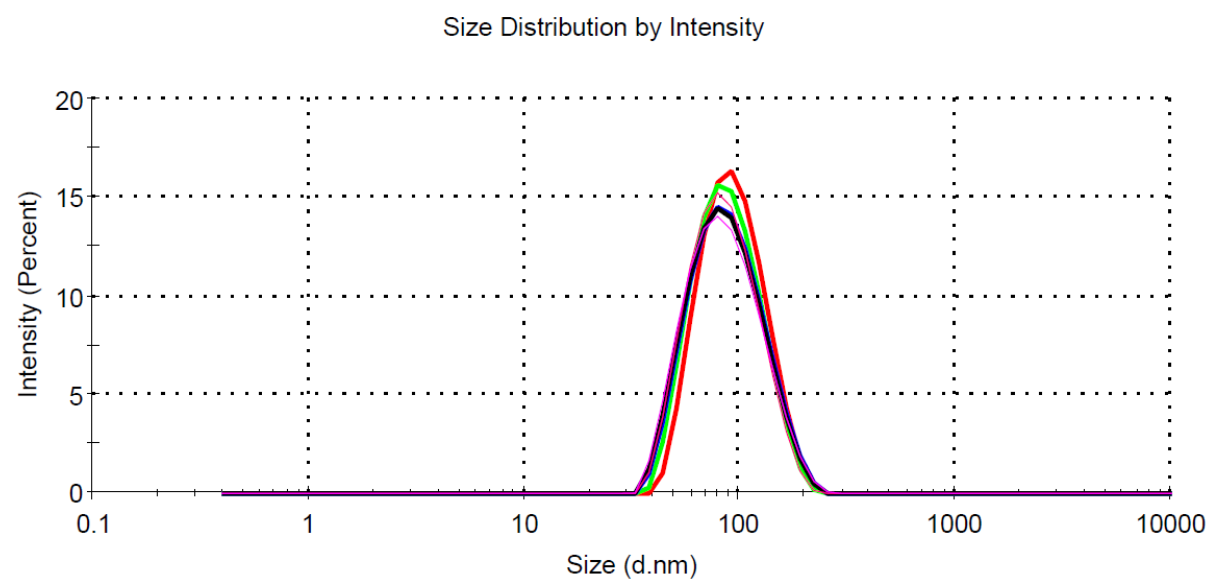


Figure S2. Dynamic light scattering size distribution of **4:1 NP¹⁵** suspended in water. Size refers to diameter of nanoparticles in nm.

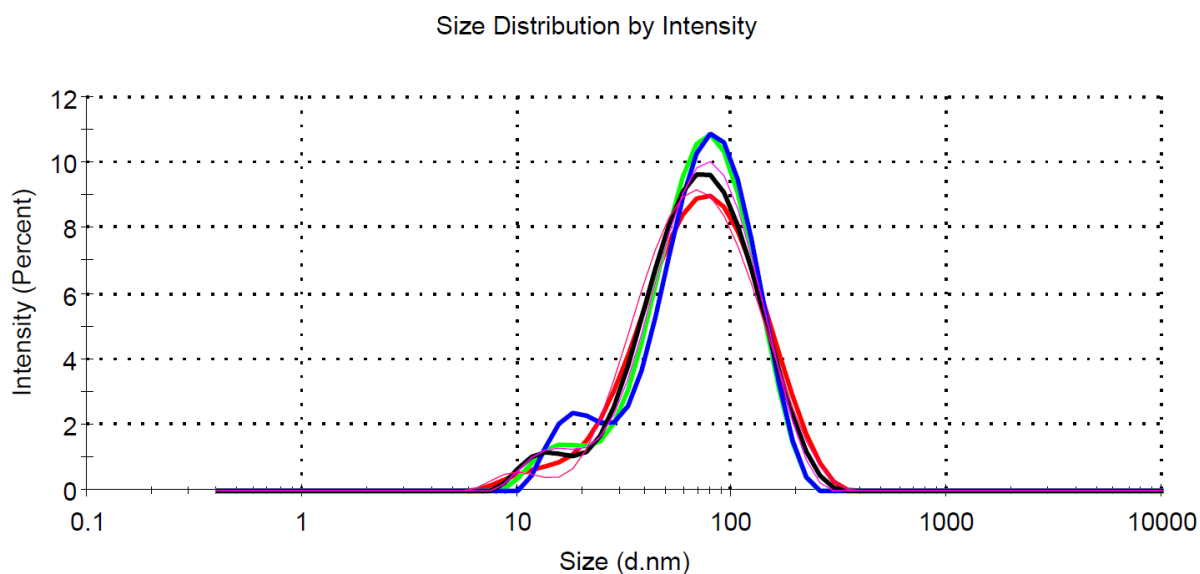


Figure S3. Dynamic light scattering size distribution of empty PEG-PLGA (5000:10,000 Da, 1:1 LA:GA) nanoparticles suspended in water. Size refers to diameter of nanoparticles in nm.

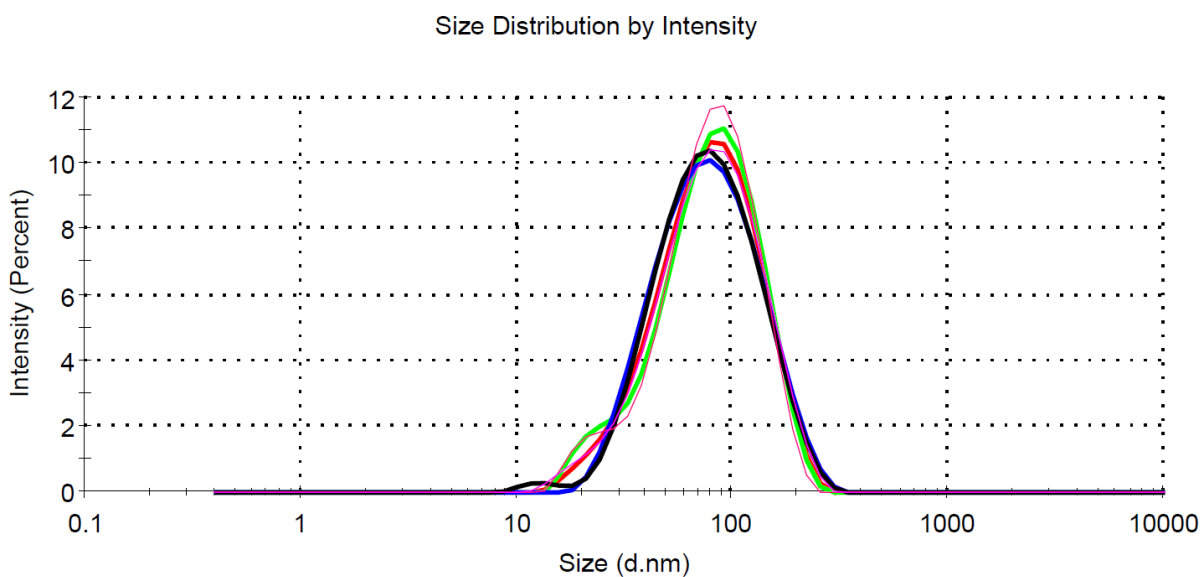


Figure S4. Dynamic light scattering size distribution of empty PEG-PLGA (5000:10,000 Da, 4:1 LA:GA) nanoparticles suspended in water. Size refers to diameter of nanoparticles in nm.

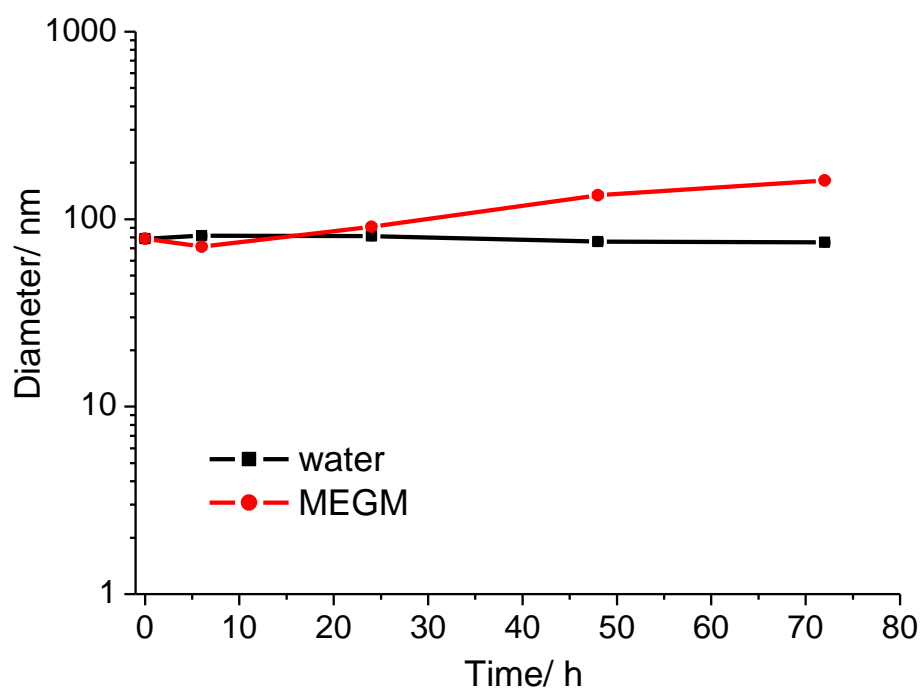


Figure S5. Variation in 1:1 NP¹⁵ diameter upon incubation in water and mammary epithelial growth medium (MEGM) over the course of 72 h at 37 °C.

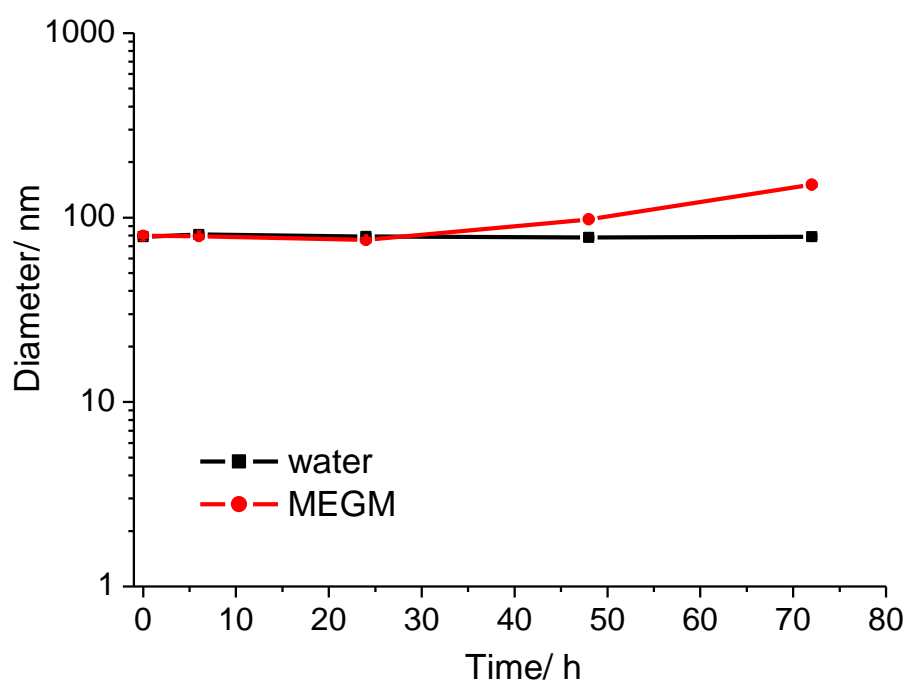


Figure S6. Variation in 4:1 NP¹⁵ diameter upon incubation in water and mammary epithelial growth medium (MEGM) over the course of 72 h at 37 °C.

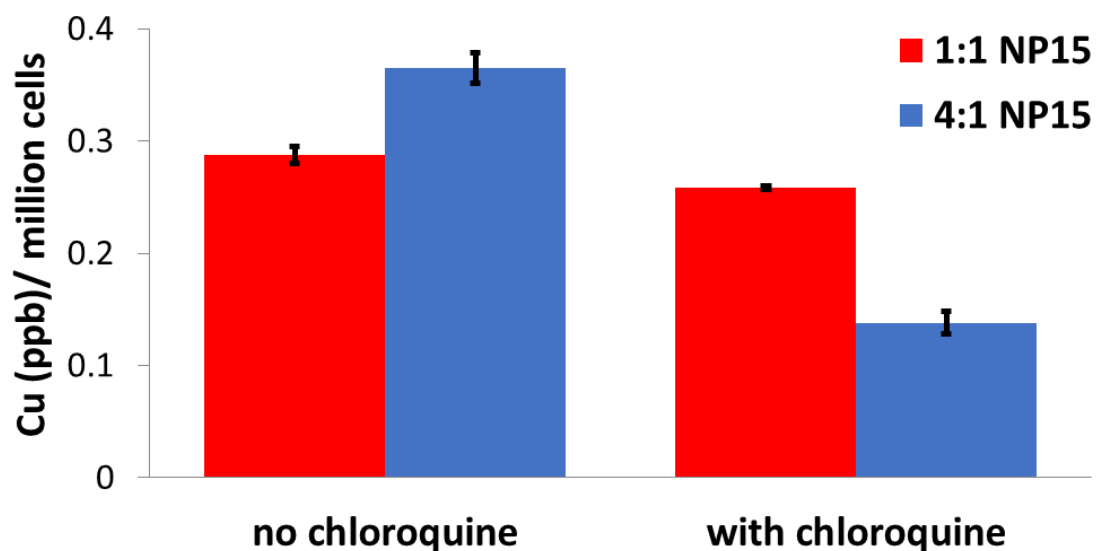


Figure S7. Copper content in HMLER-shEcad cells upon pre-incubation with chloroquine (100 μ M for 2 h) and then treatment with 1:1 NP¹⁵ and 4:1 NP¹⁵ (both 0.15 μ M for 8 h) at 37 °C.

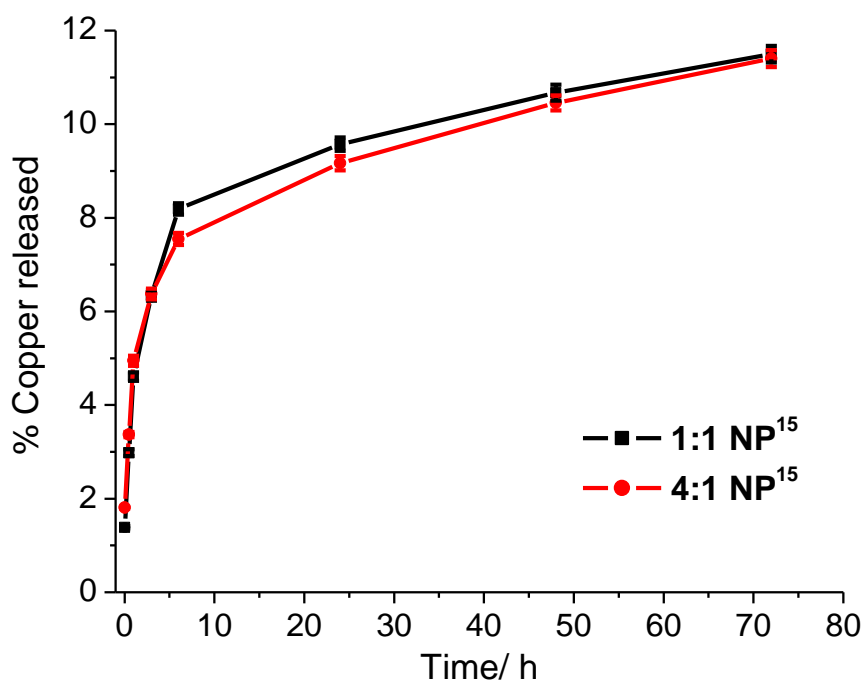


Figure S8. The amount of copper released from 1:1 NP¹⁵ and 4:1 NP¹⁵ upon incubation in sodium acetate buffer (pH 5.2) over the course of 72 h at 37 °C.

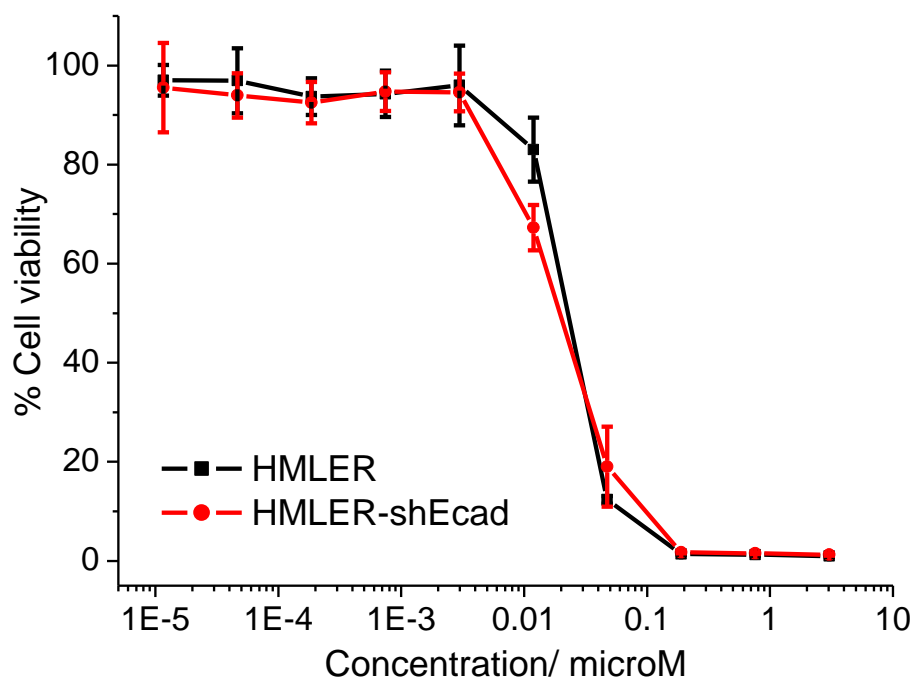


Figure S9. Representative dose-response curves for the treatment of HMLER and HMLER-shEcad cells with 1:1 NP¹⁵.

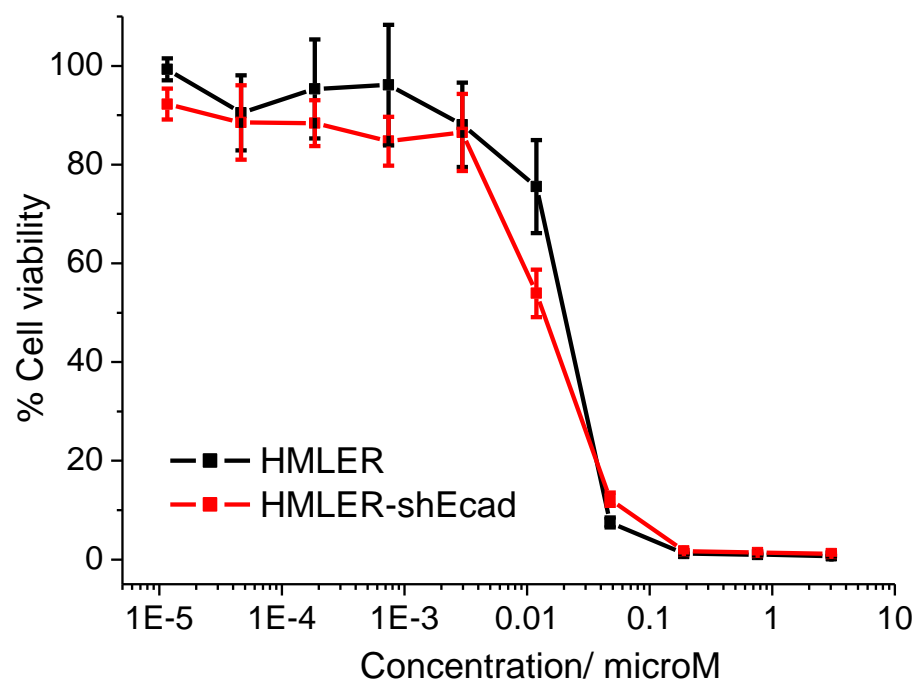


Figure S10. Representative dose-response curves for the treatment of HMLER and HMLER-shEcad cells with 4:1 NP¹⁵.

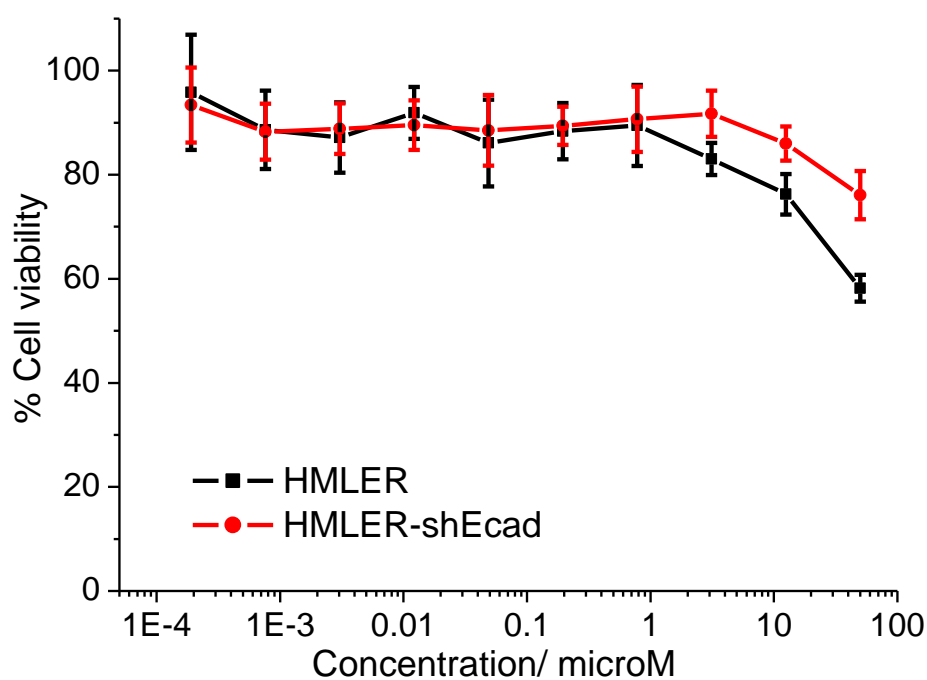


Figure S11. Representative dose-response curves for the treatment of HMLER and HMLER-shEcad cells with empty PEG-PLGA (5000:10,000 Da, 1:1 LA:GA) nanoparticles.

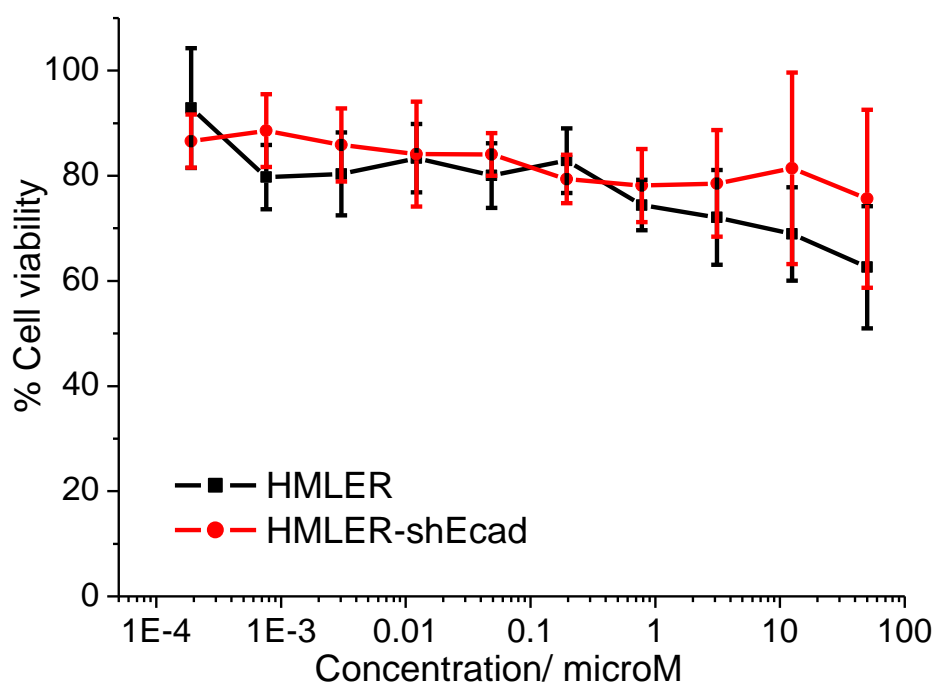


Figure S12. Representative dose-response curves for the treatment of HMLER and HMLER-shEcad cells with empty PEG-PLGA (5000:10,000 Da, 4:1 LA:GA) nanoparticles.

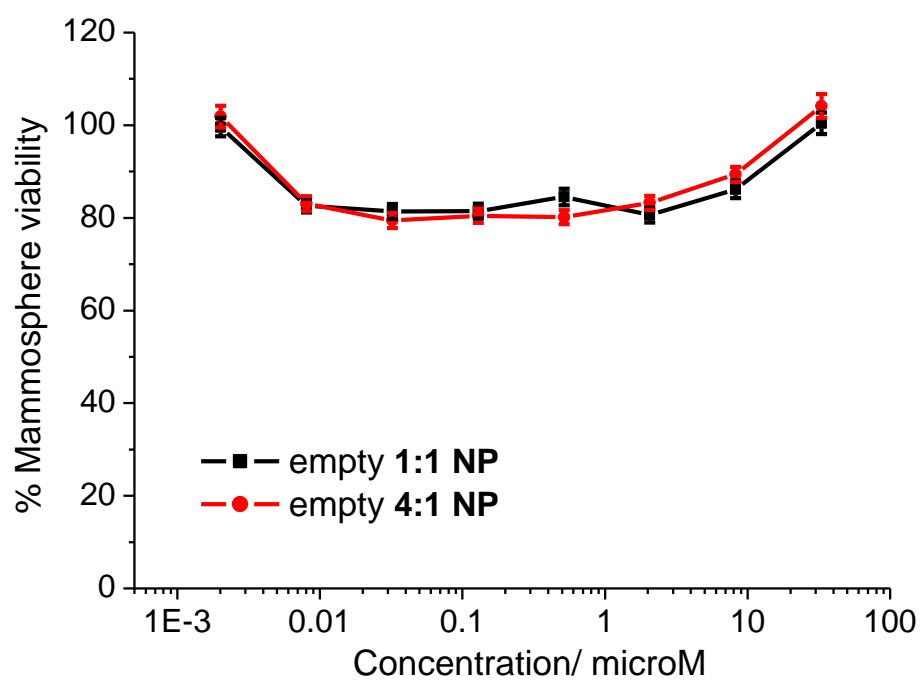


Figure S13. Representative dose-response curves for the treatment of HMLER-shEcad mammospheres with empty PEG-PLGA (5000:10,000 Da, 1:1 LA:GA) nanoparticles or empty PEG-PLGA (5000:10,000 Da, 4:1 LA:GA) nanoparticles.