

Supplementary Material

Figure S1. Chromatogram of the stock solution of mixed standards and absorption spectra: retinol (concentration - 200 $\mu\text{g/mL}$, Rt - 5.573 min.) and α -tocopherol (concentration - 500 $\mu\text{g/mL}$, Rt - 13.139 min.)

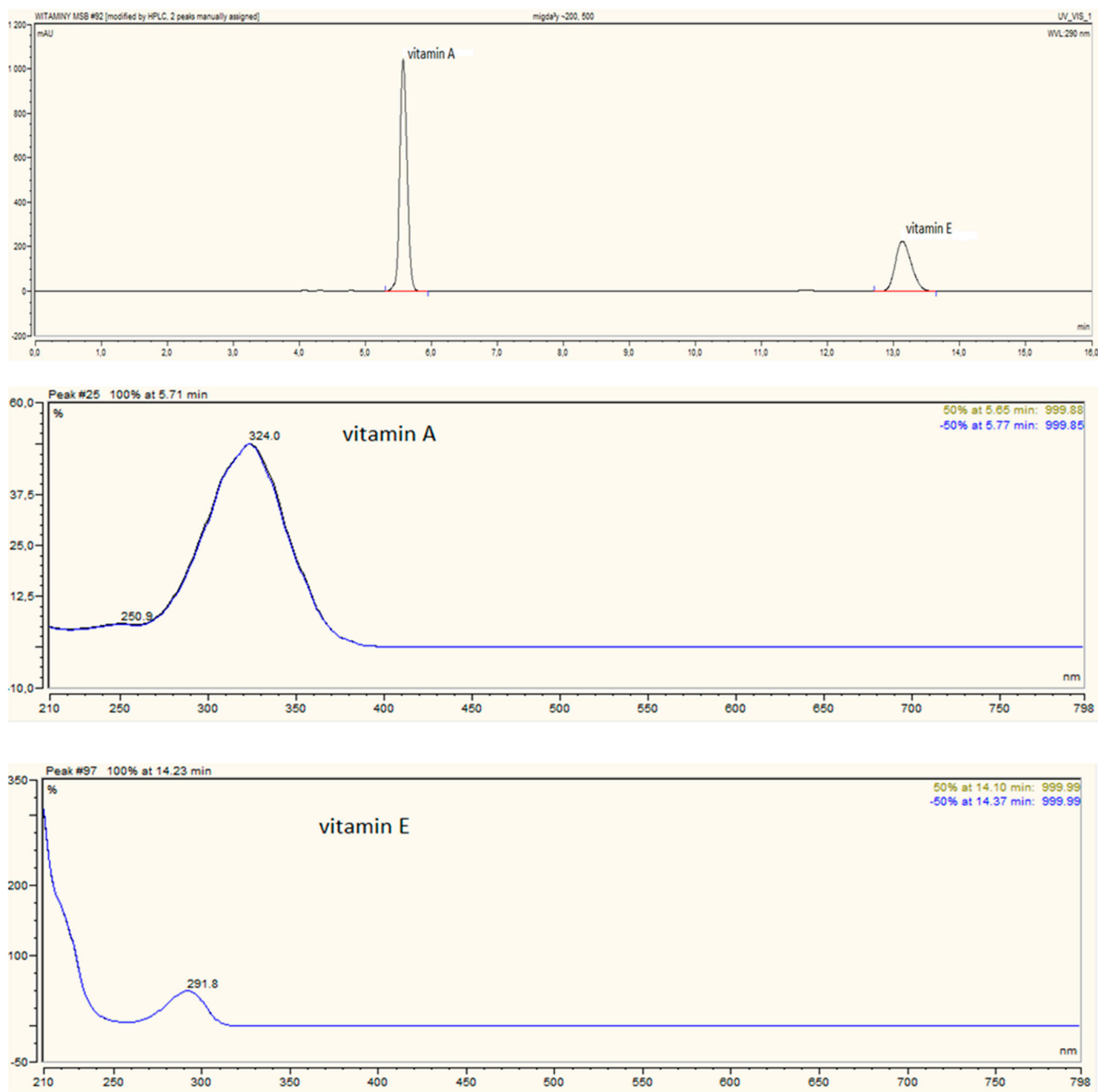
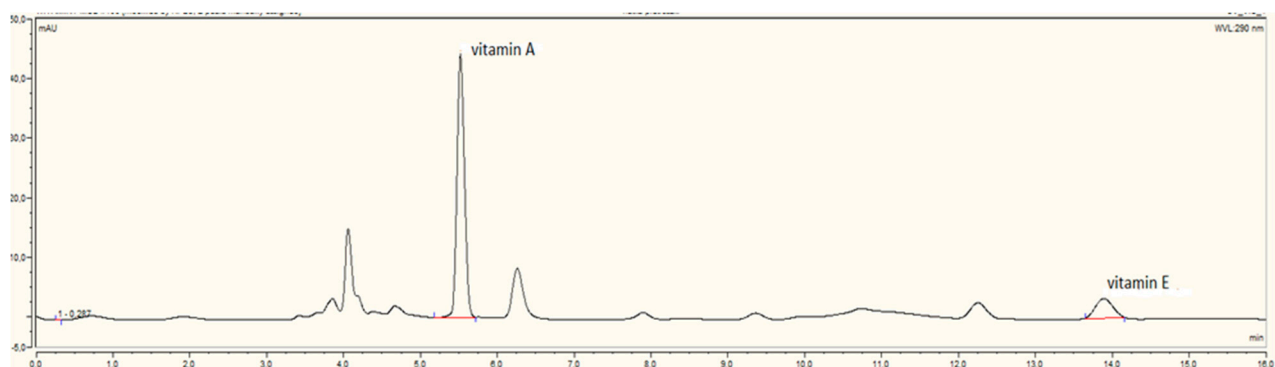
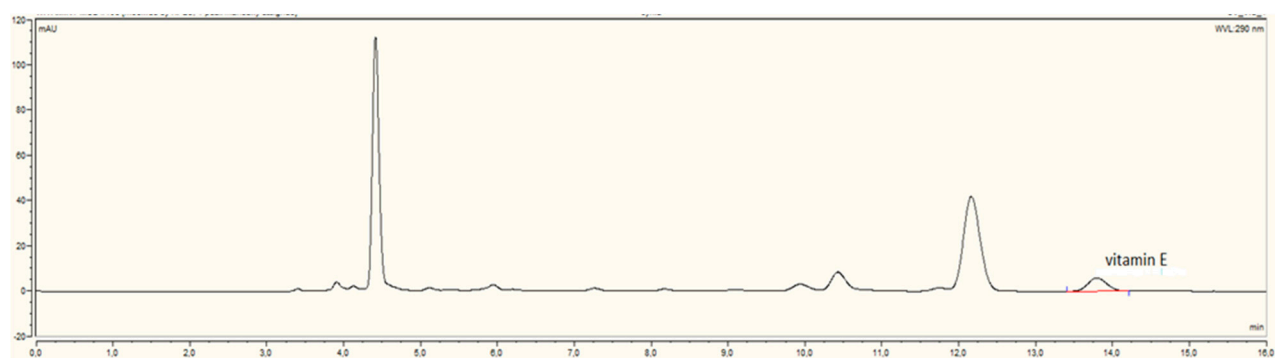


Figure S2. Chromatograms for the real samples: a) green parsley, b) pumpkin seeds, c) cheese “Złoty mazur”

a)



b)



c)

