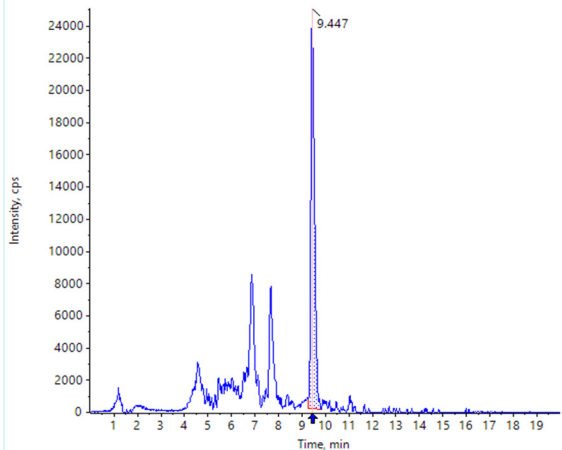
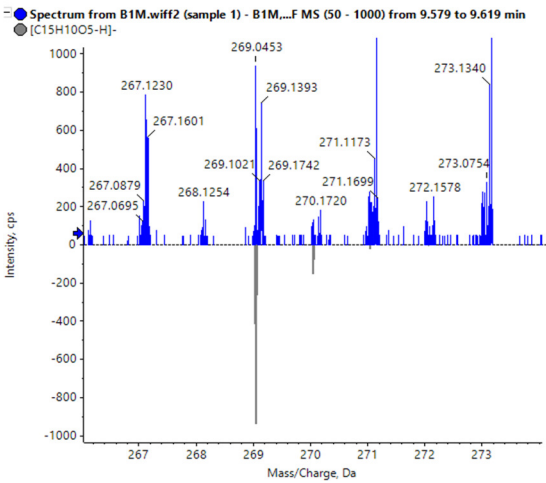
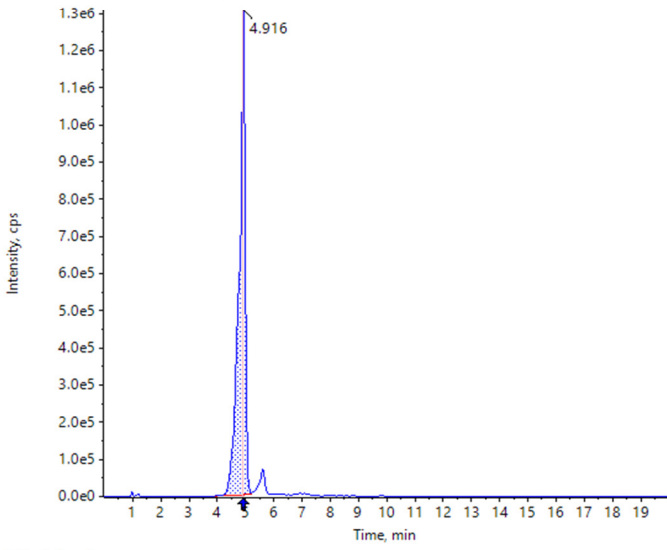
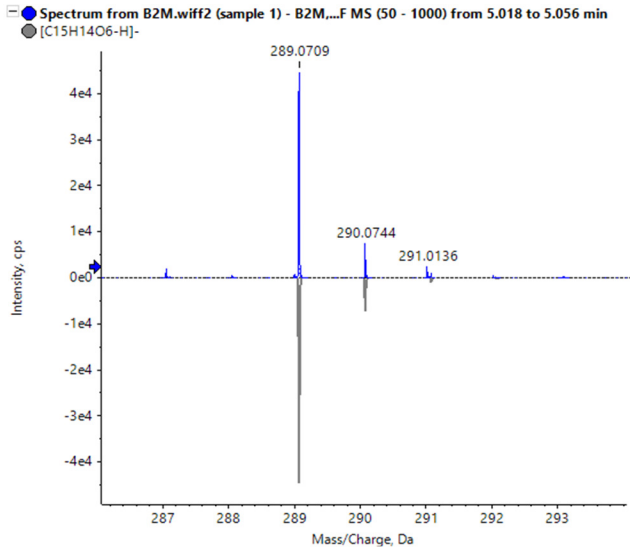
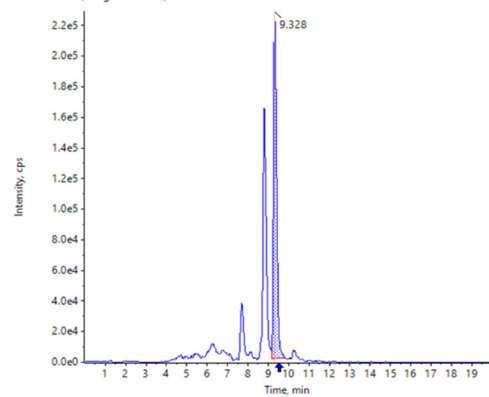


**Table S1.** Chromatograms and MS/MS fragmentation patterns of the target and non-target analytes.

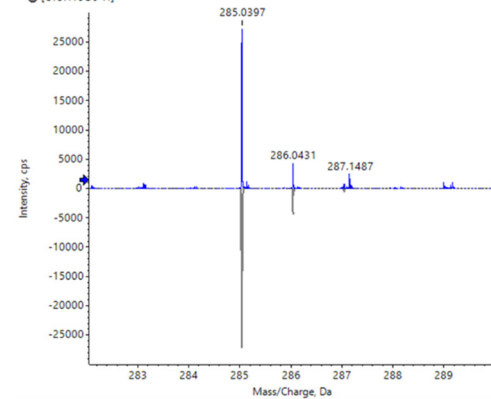
	Chromatograms	MS/MS Fragmentation Patterns
	Target analytes	
Apigenin	<p>B1M - Apigenin (Unknown) 269.0355 - 269.0555 - ...720 MOURextracts\B1M.wiff2), (sample Index: 1) Area: 268118, Height: 2.485e4, RT: 9.45 min</p> 	<p>● Spectrum from B1M.wiff2 (sample 1) - B1M...F MS (50 - 1000) from 9.579 to 9.619 min ● [C15H10O5-H]-</p> 
Catechin	<p>B2M - Catechin (Unknown) 289.0618 - 289.0818 - ...720 MOURextracts\B2M.wiff2), (sample Index: 1) Area: 19505957, Height: 1.304e6, RT: 4.92 min</p> 	<p>● Spectrum from B2M.wiff2 (sample 1) - B2M...F MS (50 - 1000) from 5.018 to 5.056 min ● [C15H14O6-H]-</p> 

## Kaempferol

B1M - Kaempferol (Unknown) 285.0305 - 285.0505...20 MOURextracts(B1M.wiff2), (sample Index: 1)  
Area: 2502775, Height: 2.267e5, RT: 9.33 min

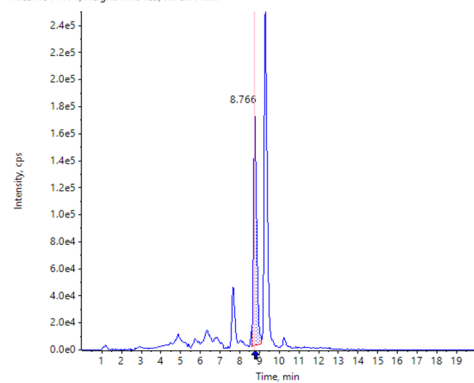


● Spectrum from B1M.wiff2 (sample 1) - B1M...F MS (50 - 1000) from 9.241 to 9.281 min  
● [C15H10O6-H]-

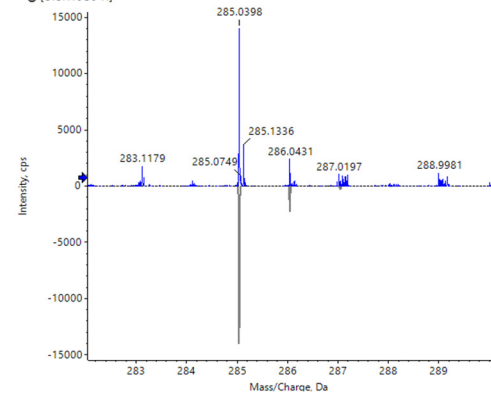


## Luteolin

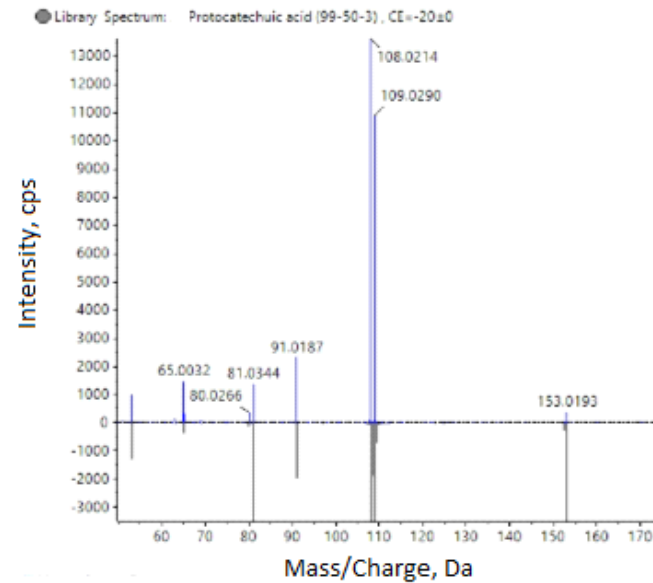
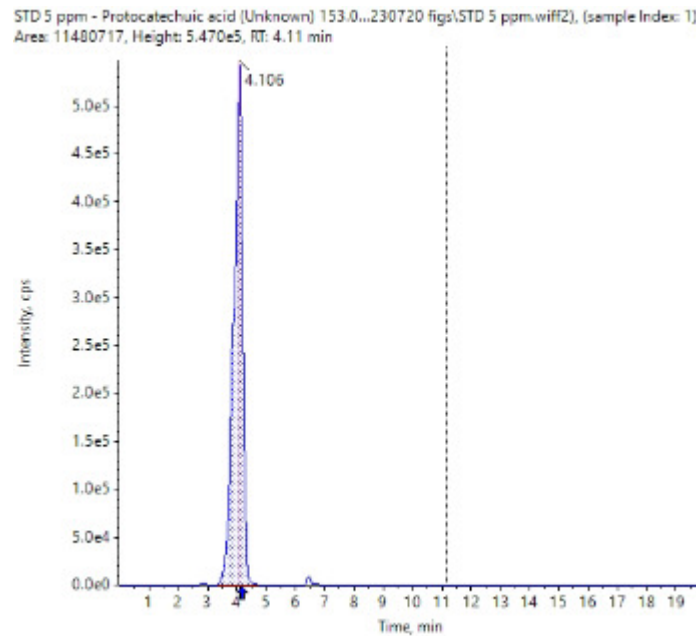
pom3 - Luteolin (Unknown) 285.0305 - 285.0505...0 MOURextracts(pom3b.wiff2), (sample Index: 1)  
Area: 1911171, Height: 1.704e5, RT: 8.77 min



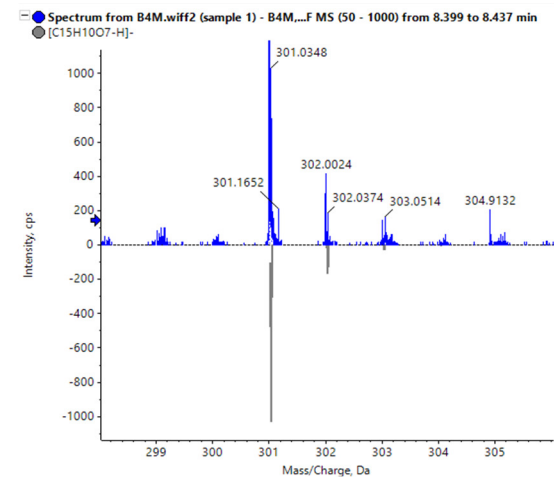
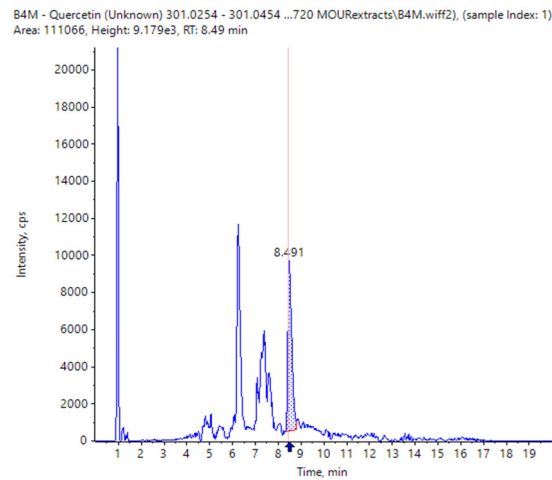
● Spectrum from pom3b.wiff2 (sample 1) - po...F MS (50 - 1000) from 8.846 to 8.887 min  
● [C15H10O6-H]-



## Protocatechuic acid

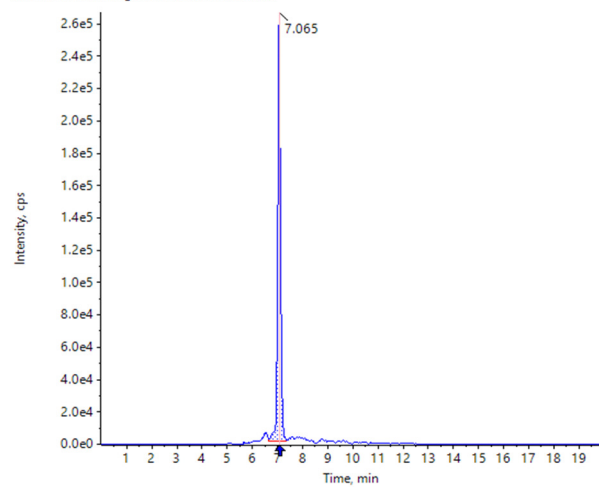


## Quercetin

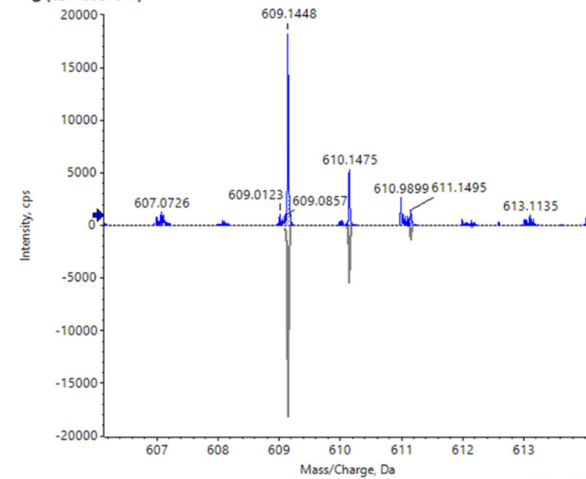


## Rutin

pom3 - Rutin (Unknown) 609.1361 - 609.1561 - (P...0 MOUExtracts\pom3b.wiff2), (sample Index: 1)  
Area: 2057345, Height: 2.649e5, RT: 7.07 min

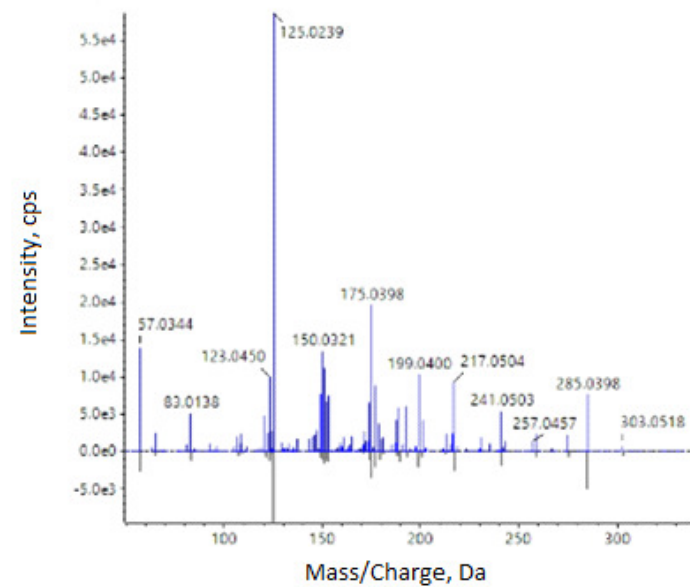
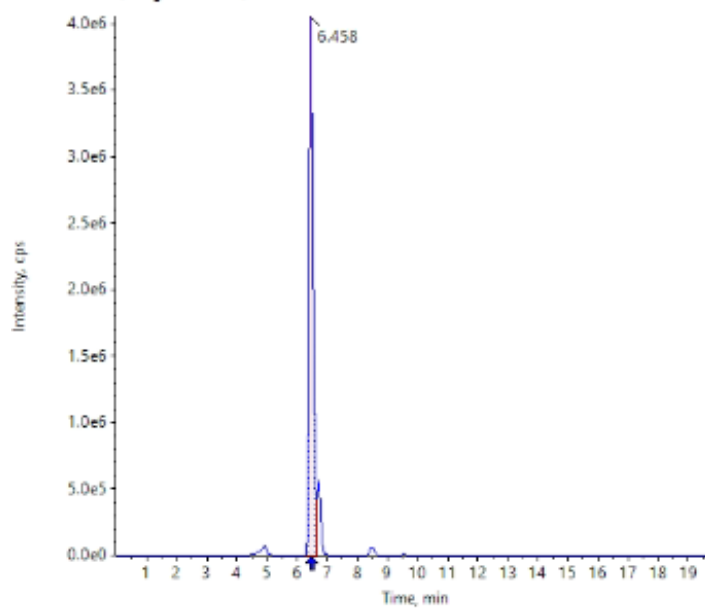


● Spectrum from pom3b.wiff2 (sample 1) - po...F MS (50 - 1000) from 7.107 to 7.146 min  
● [C<sub>27</sub>H<sub>30</sub>O<sub>16</sub>-H]-



## Taxifolin

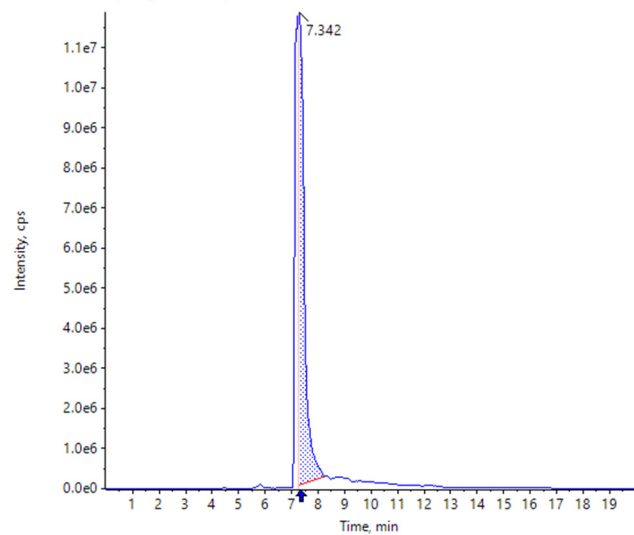
Area: 39375934, Height: 4.055e6, RT: 6.46 min



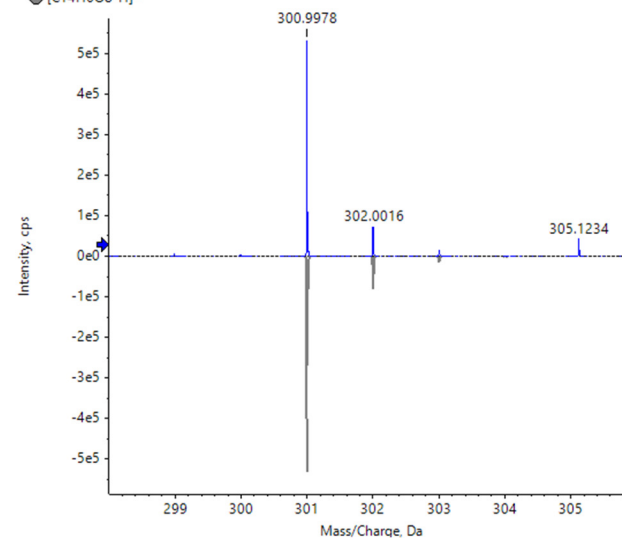
## Tentatively identified

Ellagic acid

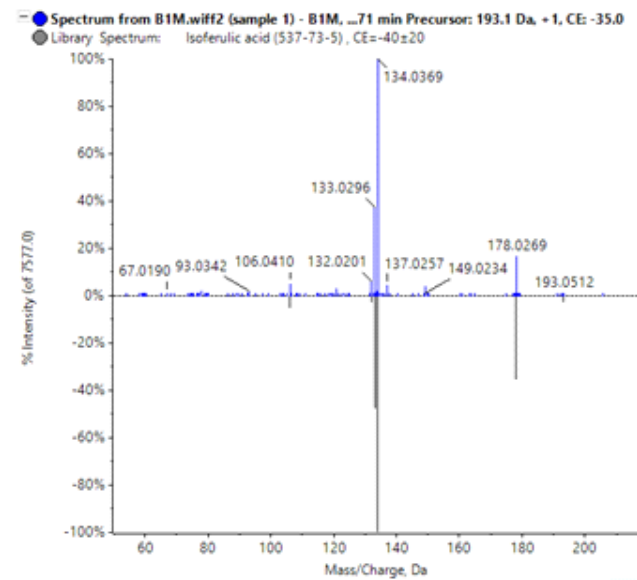
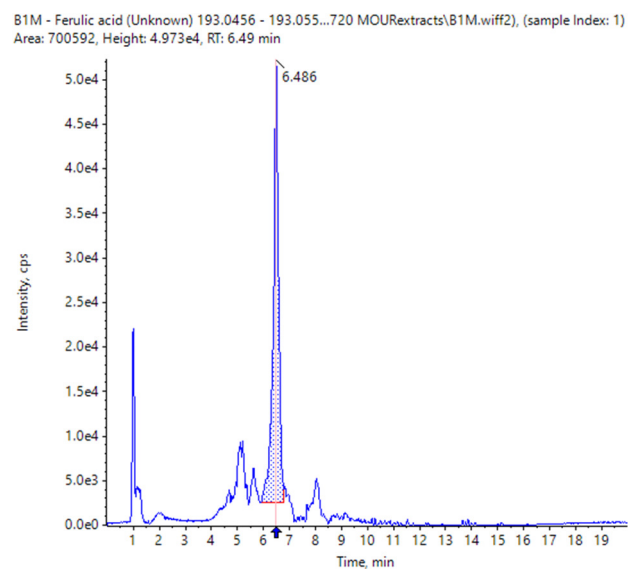
pom3 - Ellagic acid (Unknown) 300.9940 - 301.00...0 MOURextracts\pom3b.wiff2), (sample Index: 1)  
Area: 174933570, Height: 1.179e7, RT: 7.34 min



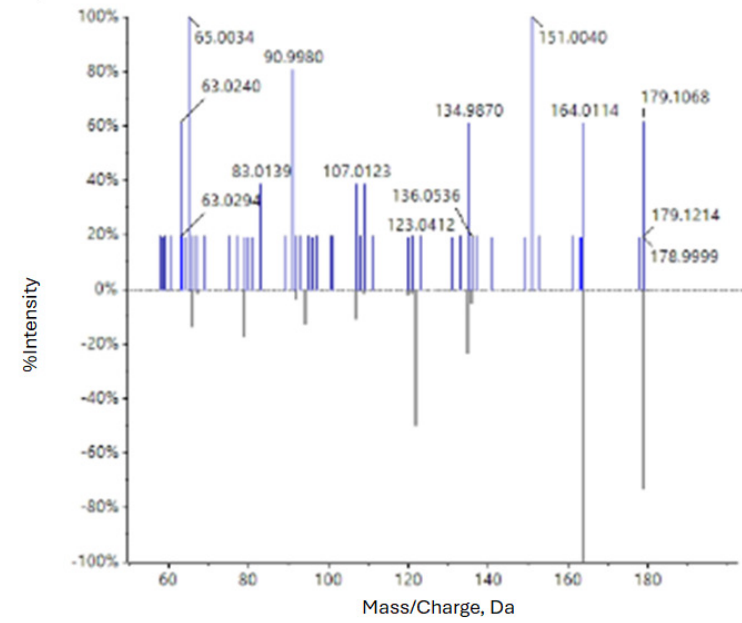
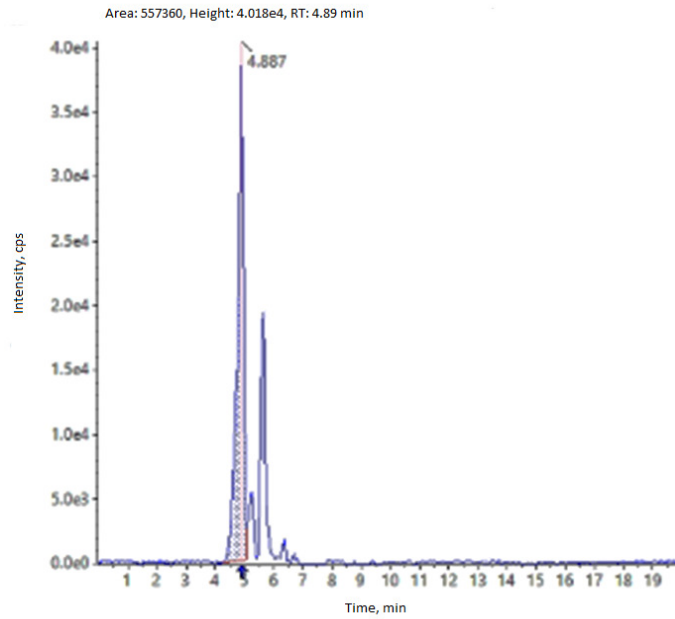
● Spectrum from pom3b.wiff2 (sample 1) - po...F MS (50 - 1000) from 7.556 to 7.595 min  
● [C<sub>14</sub>H<sub>6</sub>O<sub>8</sub>-H]<sup>-</sup>



## Ferulic acid



# Caffeic acid



*p*-Coumaric acid

