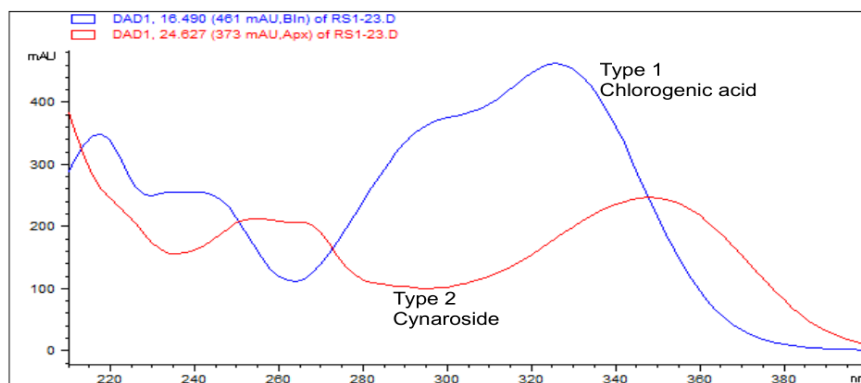
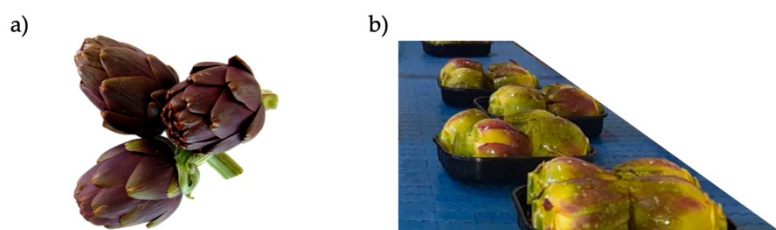


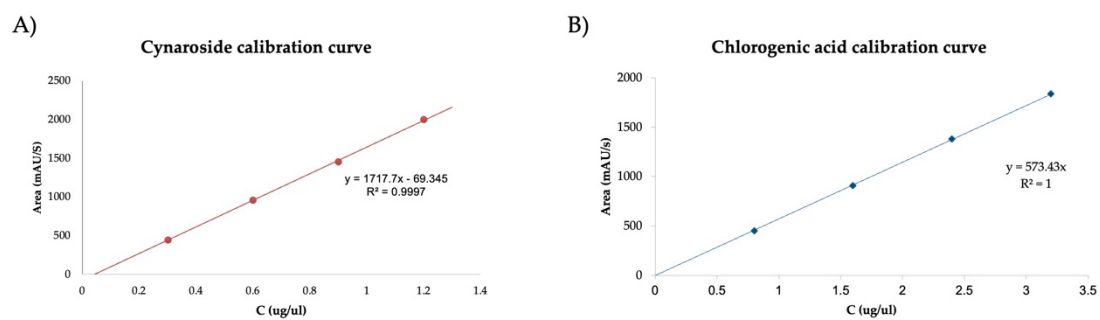
## Supplementary Materials



**Figure S1:** UV spectra of Chlorogenic Acid and Cynaroside, used for the quantification and identification (from Diode Array analysis).



**Figure S2:** a) Globe artichoke of Tema cultivar. b) Tema fourth range product.



**Figure S3:** A) Cynaroside calibration curve; B) Chlorogenic acid calibration curve.

**Table S1.** Gradient programme of HPLC-DAD analysis

Time (min) <sup>a</sup>	Solvent A (%) <sup>b</sup>	Solvent B (%) <sup>b</sup>
0-4	95	5
4-44	78	22
44-49	65	35
49-50	20	80
50-60	95	5

<sup>a</sup>Time is referred to the starting time of the HPLC gradient. <sup>b</sup> Solvent A and B contained 0.001% of TFA.