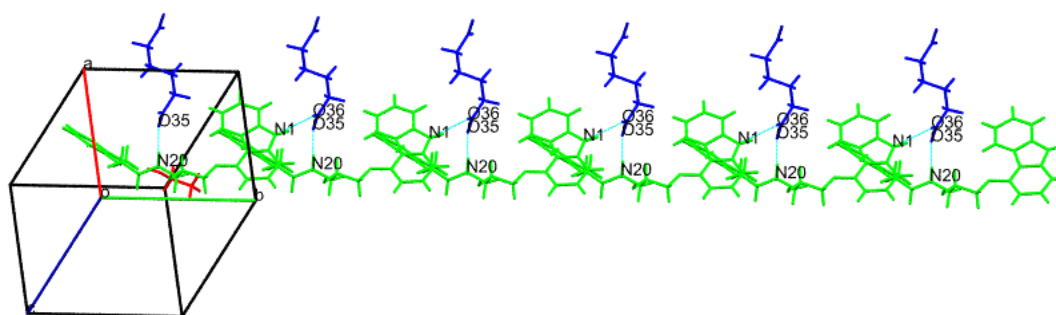


Supporting Materials

# Characterization and Crystal Structural Analysis of Novel Carvedilol Adipate and Succinate Ethanol-Solvated Salts

Li Ye<sup>1</sup>, Takayuki Furuishi<sup>2,\*</sup>, Takefumi Yamashita<sup>1</sup> and Etsuo Yonemochi<sup>3,\*</sup>

- 1 Department of Physical Chemistry, School of Pharmacy and Pharmaceutical Sciences, Hoshi University, 2-4-41 Ebara, Shinagawa-ku, Tokyo 142-8501, Japan; yorei8418@gmail.com (L.Y.), yamashita.takefumi@hoshi.ac.jp (T.Y.)
  - 2 Juntendo University Faculty of Pharmacy, 6-8-1 Hinode, Urayasu, Chiba 279-0013, Japan; t.furuishi.id@juntendo.ac.jp (T.F.)
  - 3 School of Pharmacy at Narita, International University of Health and Welfare, 4-3, Kozunomori, Narita, Chiba, 286-8686 Japan; yone@iuhw.ac.jp (E.Y.)
- \* Correspondence: t.furuishi.id@juntendo.ac.jp (T.F.); yone@iuhw.ac.jp (E.Y.)



**Figure S1.** In CVD-ADP-EtOH, the CVD molecules (green) and ADP molecules (blue) form a chain structure along the b-axis through hydrogen bonds N20--H20B...O35 and N1--H1...O36.

**Citation:** To be added by editorial staff during production.

Academic Editor: Firstname Last-name

Received: date

Revised: date

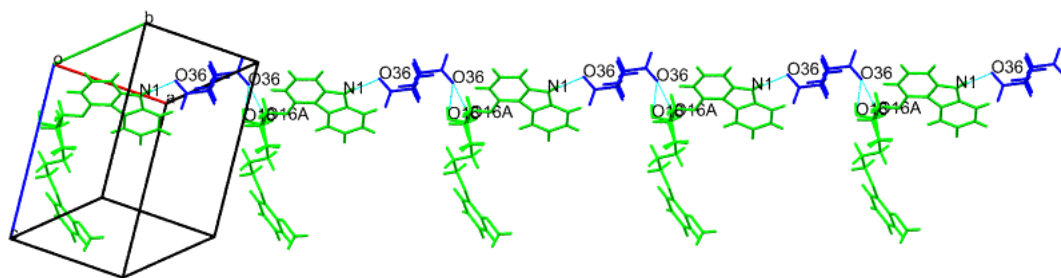
Accepted: date

Published: date

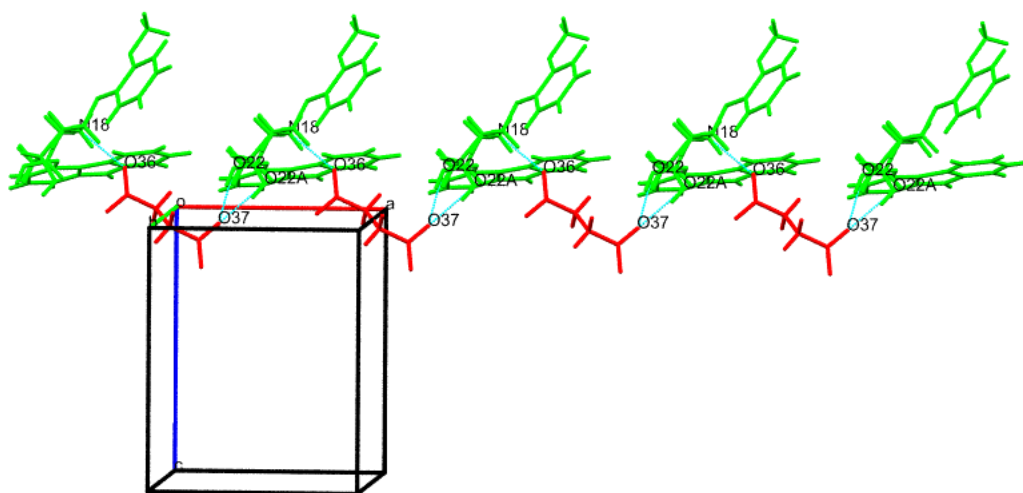


**Copyright:** © 2024 by the authors.

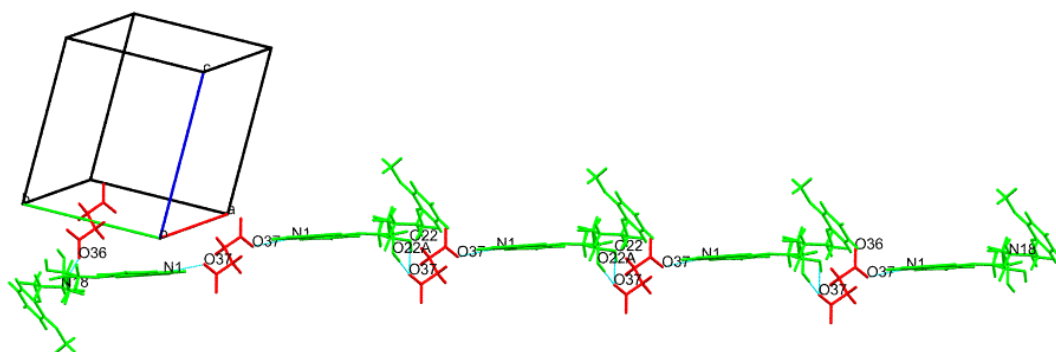
Submitted for possible open access publication under the terms and conditions of the Creative Commons Attribution (CC BY) license (<https://creativecommons.org/licenses/by/4.0/>).



**Figure S2.** The other chain is formed by hydrogen bonds N1--H1...O36 and O16--H16...O36 between CVD molecules and ADP molecules in CVD-ADP-EtOH.



**Figure S3** In CVD-SUA-EtOH, the CVD molecules (CVD) and SUA molecules (red) form a chain along the a-axis through hydrogen bonds N18--H18A...O36 and O22--H22...O37.



**Figure S4.** In CVD-SUA-EtOH, the CVD molecules and SUA molecules form a chain through the hydrogen bonds O22--H22...O37 and N1--H1...O37.

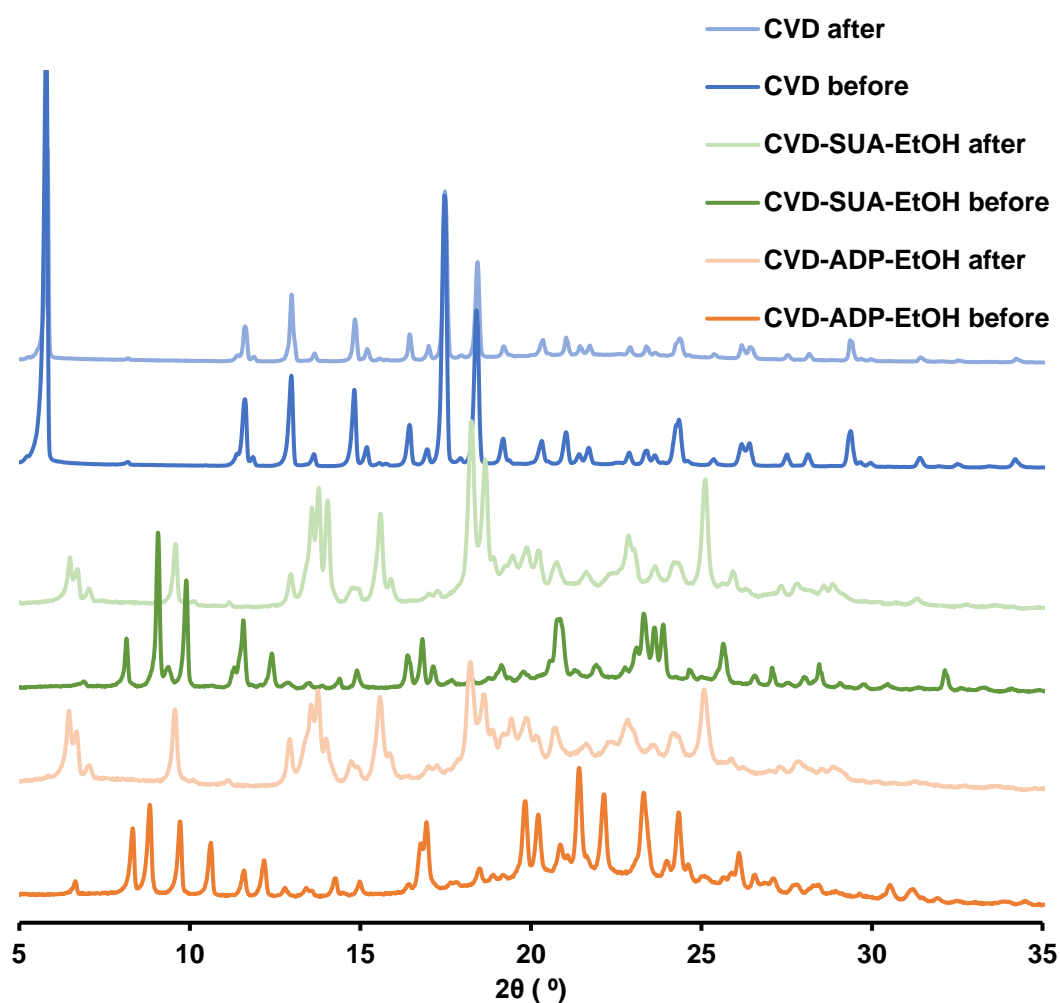


Figure S5. PXRD patterns of CVD, CVD-SUA-EtOH, and CVD-ADP-EtOH before and after the 24-hour solubility tests.

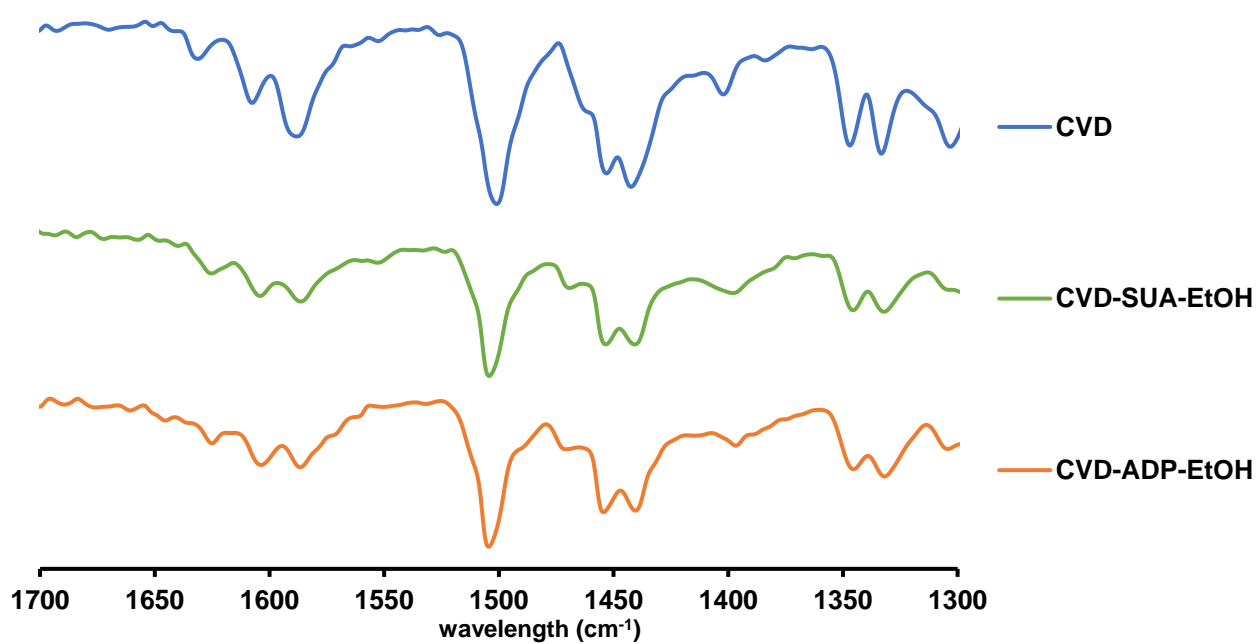


Figure S6. FT-IR spectra of CVD, CVD-SUA-EtOH, and CVD-ADP-EtOH after the 24-hour solubility tests.