

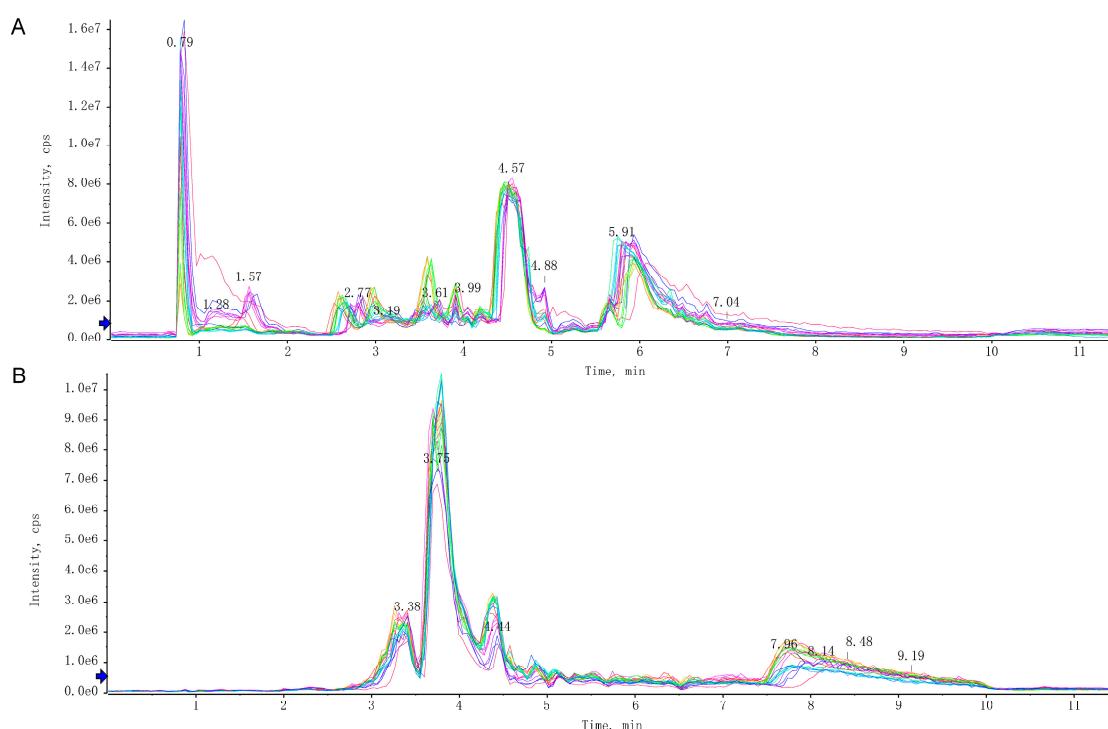
# Widely targeted metabolomics method reveals differences in volatile and nonvolatile metabolites in three different varieties of raw peanut by GC-MS and HPLC-MS

Jiantao Fu<sup>1,2</sup>, Yuxing An<sup>1,2</sup>, Dao Yao<sup>3</sup>, Lijun Chen<sup>1,2</sup>, Liwen Zhou<sup>3</sup>, Dachun Shen<sup>1,2</sup>, Sixing Dai<sup>1,2</sup>, Yinglin Lu<sup>1,2\*</sup>, Donglei Sun<sup>1,2\*</sup>

1. Institute of Nanfan & Seed Industry, Guangdong Academy of Sciences, Guangzhou, Guangdong, 510316, China

2. Guangdong Province Pesticide-fertilizer Technology Research Center, Guangzhou, Guangdong, 510316, China

3. Heyuan Provincial Academy of Sciences Research Institute, Guangdong Academy of Sciences, GDAS, Heyuan, 517001, China



**Figure. S1** LC-MS Overlay display of total ion current (TIC) and multi-peak detection plots for peanut samples. A: Positive Ions, B: Negative Ions.