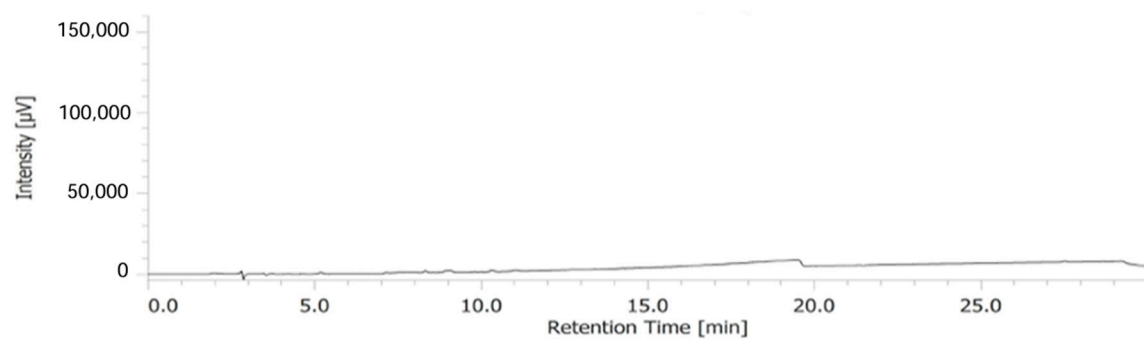
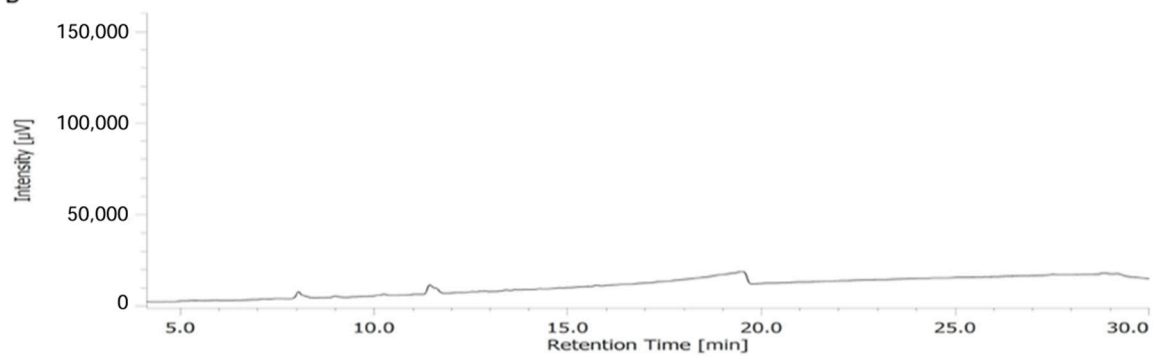


**Figure S1.** Confocal images of nematodes at the 14<sup>th</sup> day of chronic treatment with justicidin B. A and B. Representative images of FITC (A) and DAPI (B) fluorescence of nematode treated with Justicidin B 200 µg/mL in acute administration. C, D, E and F. Representative images of nematodes treated chronically with justicidin B 100 µg/mL (E) and 200 µg/mL (F); C and D are the relative control nematodes treated with DMSO.

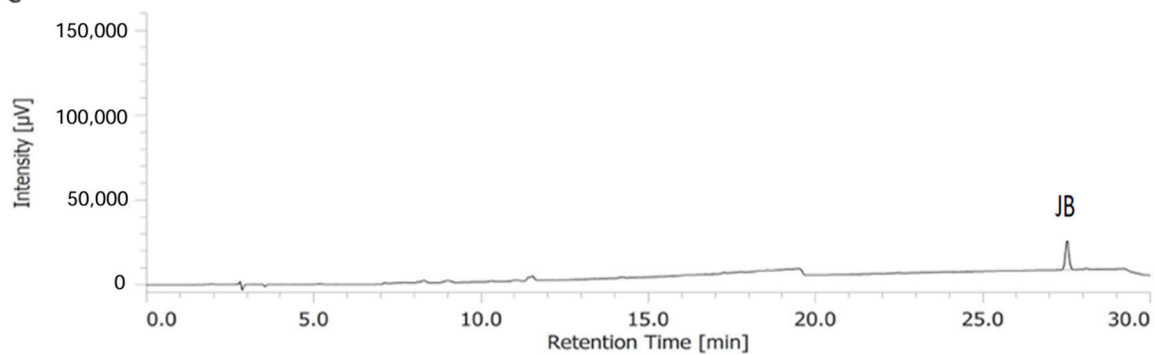
A

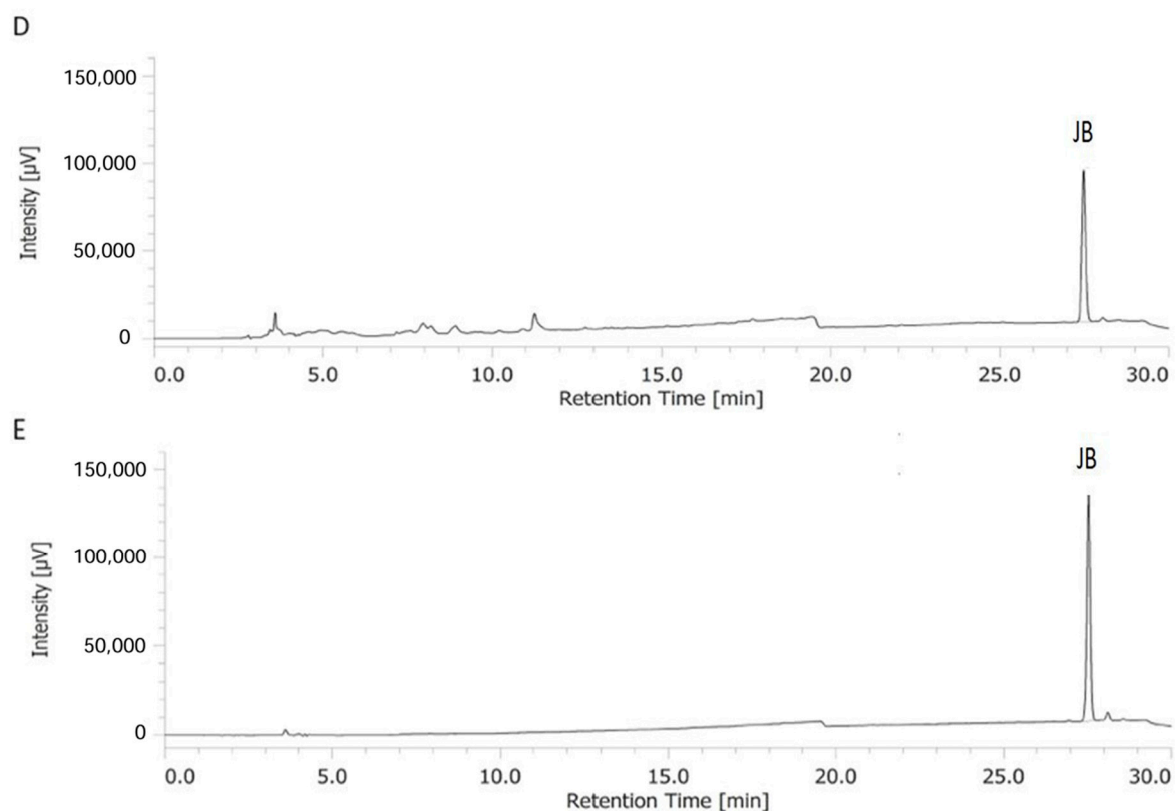


B

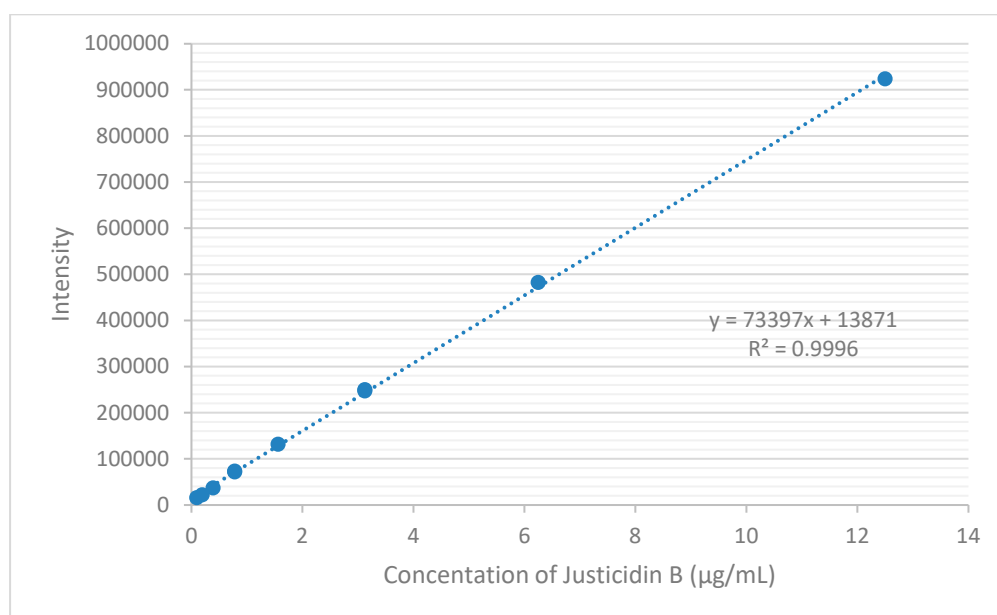


C





**Figure S2.** Chromatogram profile media and washing solutions at the end of 4<sup>th</sup> day of growth with and without justicidin B treatments. A) Washing solution of nematode without justicidin B. B) Growth medium of nematode without justicidin B. C) Washing solution of nematode with justicidin B 200 μg/mL. D) Growth medium of nematode with justicidin B 200 μg/mL and (E) Standard solution of justicidin B 12.5 μg/mL.



**Figure S3.** Calibration curve of justicidin B standard (from 0,098 to 12,5 μg/mL).

**Table S1.** HPLC calibration curve data.

Standard	Concentration range (µg/mL)	Regression equation	Correlation Coefficient (R <sup>2</sup> )	LOD (µg/mL)	LOQ (µg/mL)
justicidin B	0,098-12,5	$y = 73397x + 13871$	0,9996	0,12	0,35