

A Coumarin-Hemicyanine Near-Infrared Dye with a Large Stokes Shift for the Fluorescence Detection of Cyanide and Naked-Eye Recognition

Dongmei Li¹, Senlin Peng¹, Xu Zhou¹, Lingyi Shen¹, Xianjiong Yang¹, Hong Xu^{1,*}, Carl Redshaw², Qilong Zhang^{1,*}

- 1 School of Basic Medical Science, Guizhou Medical University, Guiyang 550004, China. Email: shenly@stumail.nwu.edu.cn (L.Y.S); sciqlzhang@gmc.edu.cn (Q.L.Z) ; yangxianjiong@126.com (X.J.Y); ylh6401@gmc.edu.cn (Y.L.H); xuhong@gmc.edu.cn (H.X.).
- 2 Chemistry, School of Natural Sciences, University of Hull, Cottingham Road, Hull, Yorkshire HU6 7RX, UK. mail: c.redshaw@hull.ac.uk (C.R.).
- * Correspondence: xuhong@gmc.edu.cn (H.X.); Fax: +86-851-8817-4017 (H.X.); gzuqlzhang@126.com (Q.L.Z.); Fax: +86-851-8817-4017 (H.X.)

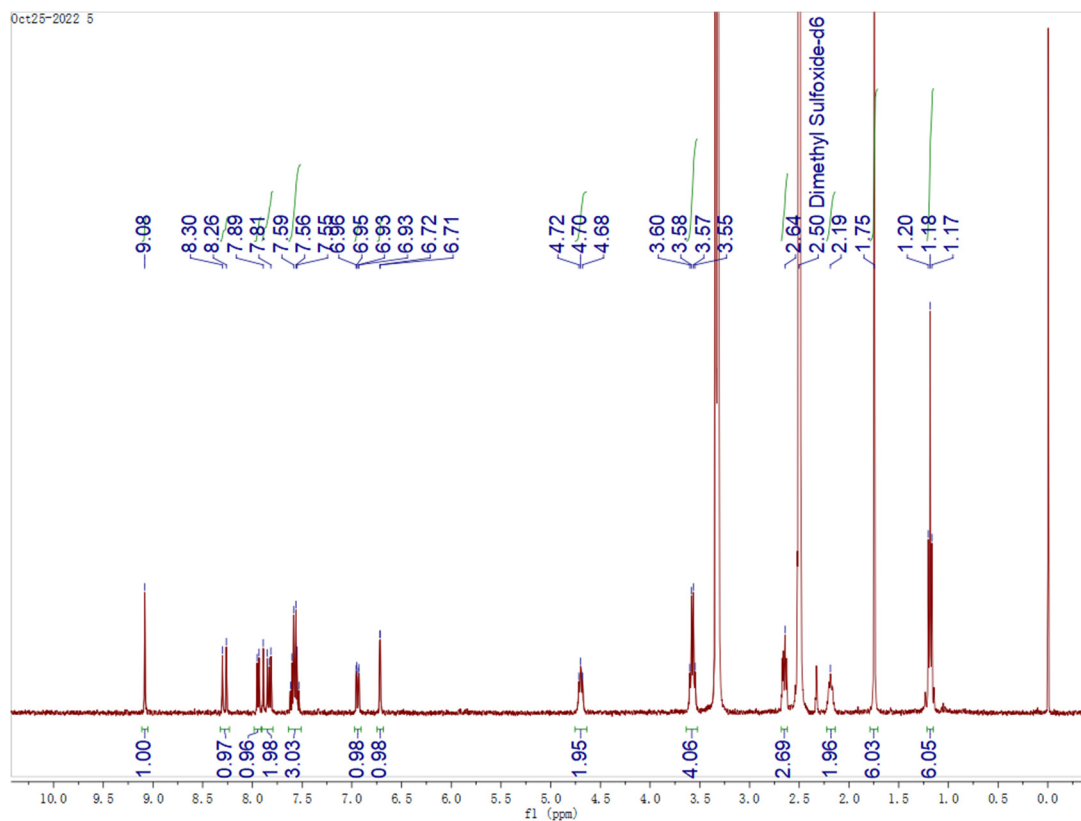


Figure S1. ^1H NMR spectrum of probe W

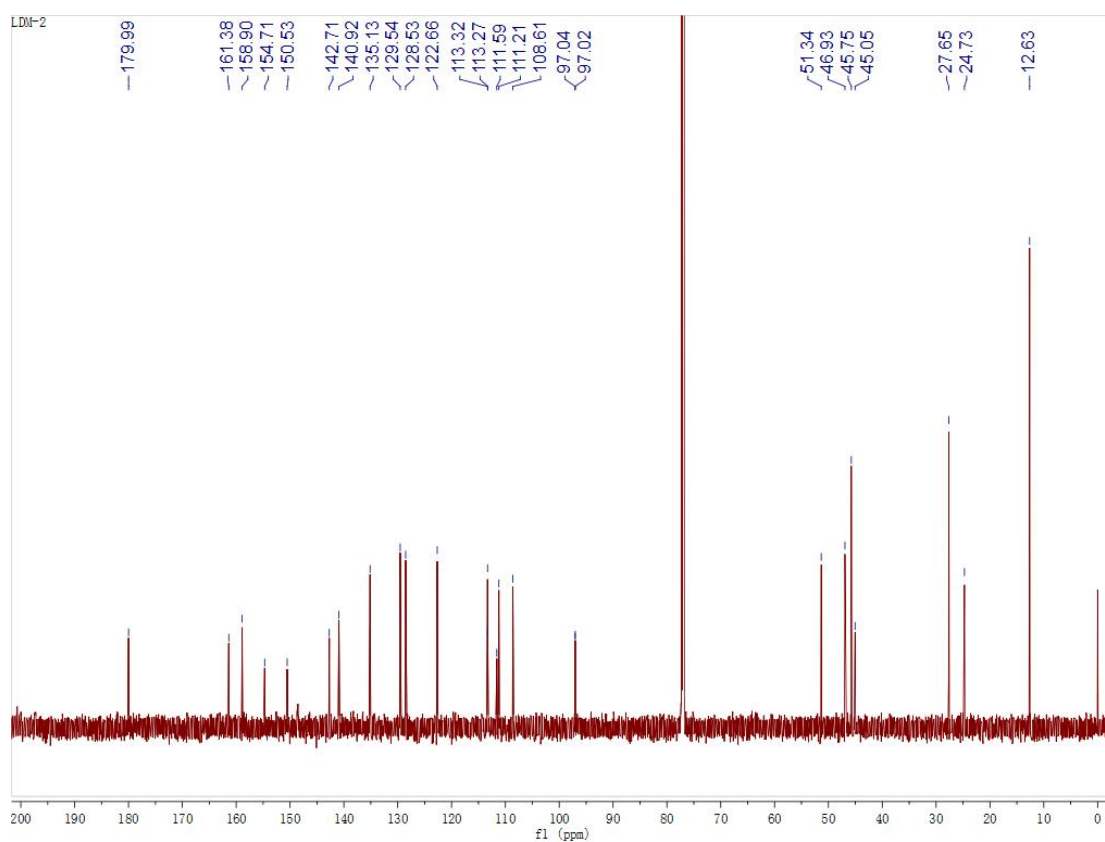


Figure S2. ^{13}C NMR spectrum of probe W

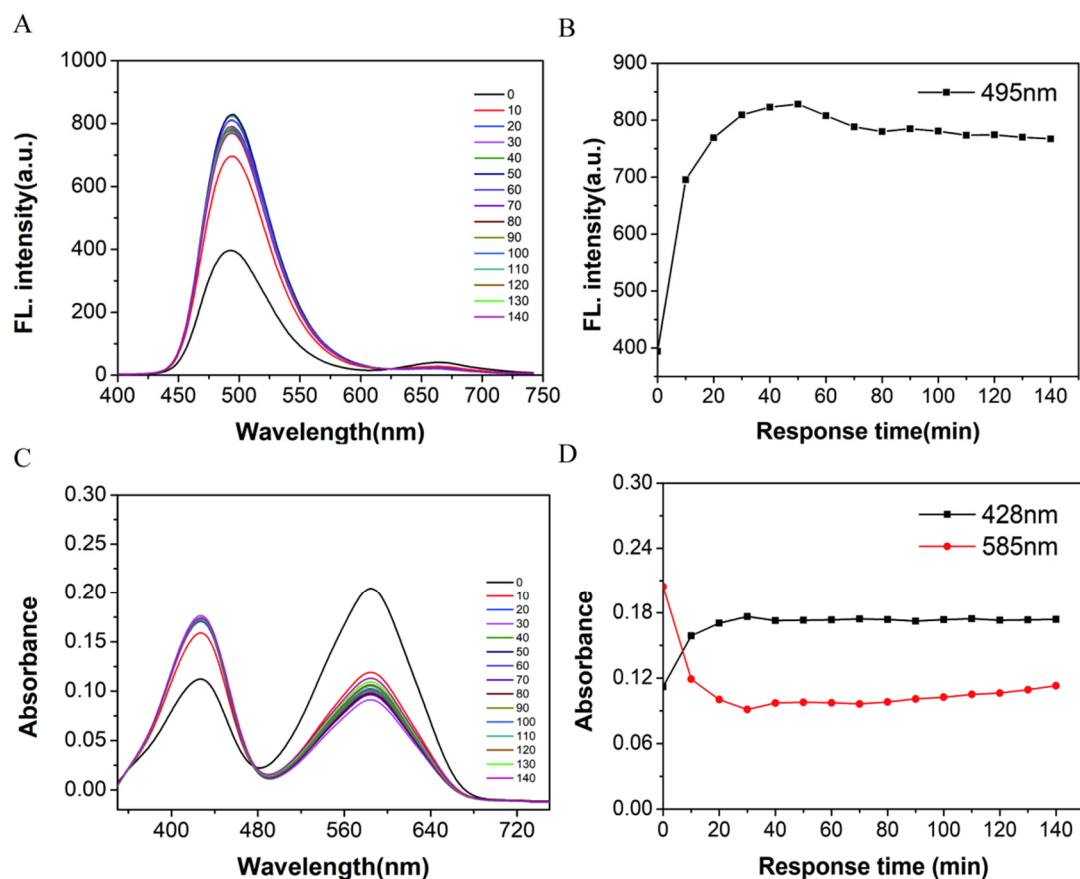


Figure S3. Time-varying fluorescence spectra (A) of probe W-CN⁻ solution in dimethyl sulfoxide/water ($V_{\text{DMSO}}:V_{\text{H}_2\text{O}}=1:4$, $1.00 \times 10^{-2} \text{ mol/L}$ PBS buffer) detection system; changes in fluorescence intensities of probe W-CN⁻ solution over time at the maximum emission at $\lambda_{em}=495\text{nm}$, slit. 5/5nm, voltage: 700V (B); UV-Vis absorption spectra (C) and the effect of time-dependent UV-visible absorbance of probe W-CN⁻ solution at $\lambda=428/585\text{nm}$ (D).

Table S1. Summary of crystal data for W

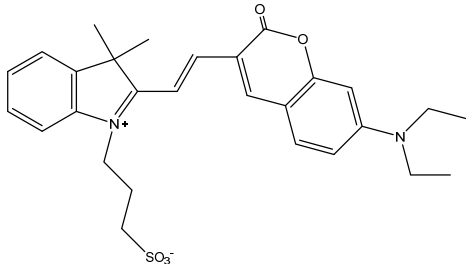
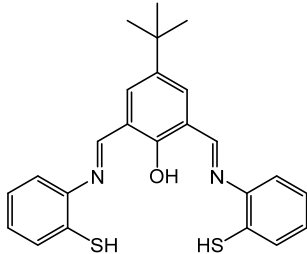
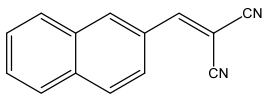
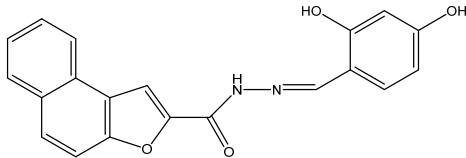
Parameter	W
Empirical formula	C ₂₈ H ₃₂ N ₂ O ₅ S
Formula weight [g mol ⁻¹]	508.61
Crystal system	monoclinic
Space group	<i>P</i> 2 ₁ / <i>n</i>
<i>a</i> [Å]	16.317(3)
<i>b</i> [Å]	7.8841(17)
<i>c</i> [Å]	20.827(4)
α	90.00°
β	104.707(9)
γ	90.00°
Volume [Å ³]	2591.6(9)
Z	4
Density, calcd [gm ⁻³]	1.304
Temperature [K]	300(2)
Unique reflns	2463
Obsd reflns	4564
Parameters	330
<i>R</i> _{int}	0.0774
<i>R</i> [<i>I</i> > 2σ(<i>I</i>)] ^a	0.0745
<i>W</i> [all data] <i>R</i> ^b	0.1679
GOF on <i>F</i> ²	1.060

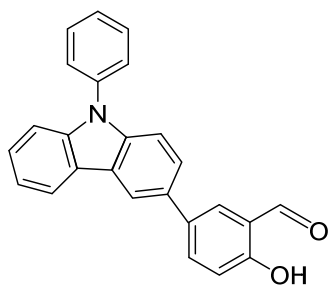
Table S2. Hydrogen-bonding geometries for compound W

D—H...A	d(D...H)/nm	d(H...A)/nm	d(D...A)/nm	∠D—H...A/ (°)
C(10)—H(10B)—F(3) ⁱ	0.096	0.254	0.329 9(4)	137
C(10)—H(10B)—F(4) ⁱ	0.096	0.243	0.337 8(4)	170
C(3)—H(3)—F(1) ⁱⁱ	0.093	0.254	0.343 0(4)	161
C(10)—H(10C)—O(2) ⁱⁱⁱ	0.096	0.257	0.337 9(4)	141
C(18)—H(18A)—F(4) ⁱⁱⁱ	0.097	0.251	0.331 3(4)	140
C(19)—H(19B)—F(2)	0.096	0.250	0.338 6(4)	153
C25—H25B...O4 ⁱ	0.97	2.40	3.242 (6)	144.6
C24—H24...O4 ⁱ	0.93	2.40	3.306 (5)	164.7
C14—H14...O2 ⁱⁱ	0.93	2.43	3.348 (6)	171.0
C3—H3A...O2 ⁱⁱ	0.97	2.62	3.458 (6)	145.0
C1—H1B...O2 ⁱⁱ	0.97	2.48	3.347 (6)	149.4

Symmetry codes: i $-x+1, -y, -z+1$; ii $x-1, y, z$; iii $x, -y+1/2, z+1$

Table S3. Comparison data with reported CN⁻ sensors

Structure	Fluorescence	solvent	Detection limit
 Our work	Turn-on	DMSO/ H ₂ O (1:4)	0.24 μM/ 0.13 μM
 Probe R [2]	Turn-on	DMSO/ H ₂ O (2:8)	0.96 μM
 Probe 1 [3]	Turn-on	DMF/H ₂ O (6:4)	0.23 μM
 Q1-3 [4]	Turn-on	DMSO/ H ₂ O (1:9)	0.81 μM

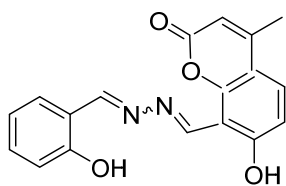


CPHB [5]

Turn-on

THF/ H₂O
(1:19)

0.249 μM

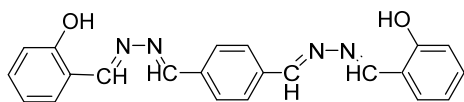


YS [6]

Turn-on

DMSO/ H₂O
(3:7)

0.17 μM

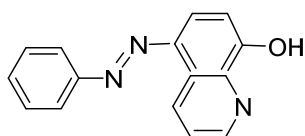


L1 [7]

Turn-on

DMSO/ H₂O
(4:1)

0.947 μM



AZQ [8]

Turn-on

EtOH/ H₂O
(1:1)

2.6 μM

References

1. Shi, Q; Wu, S.T; Shen, L.Y; Zhou, T; Xu, H; Wang, Z.Y; Yang, X.J; Huang, Y.L; Zhang, Q.L. A Turn-On Fluorescent Chemosensor for Cyanide Ion Detection in Real Water Samples. *Frontiers in chemistry*. 2022, 10:923149. doi:10.3389/fchem.2022.923149.
2. Kumar, P.S; Lakshmi, P.R; Elango, K.P. An easy to make chemoreceptor for the selective ratiometric fluorescent detection of cyanide in aqueous solution and in food materials. *New Journal of Chemistry*. 2019, 43(2), 675-680. doi:10.1039/C8NJ05587D.
3. Long, L.L; Yuan, X.Q; Cao, S.Y; Han, Y.Y; Liu, W.G; Chen, Q; Han, Z.X; Wang, K. Determination of Cyanide in Water and Food Samples Using an Efficient Naphthalene-Based Ratiometric Fluorescent Probe. *ACS Omega*. 2019, 4(6), 10784–10790. doi:10.1021/acsomega.9b01308.
4. Qu, W.J; Li, W.T; Zhang, H.L; Wei, T.B; Lin, Q; Yao, H; Zhang, Y.M. Rapid and Selective Detection of Cyanide Anion by Enhanced Fluorescent Emission and Colorimetric Color Changes at Micromole Levels in Aqueous Medium. *Journal of Heterocyclic Chemistry*. 2018, 155-124. doi:10.1002/jhet.3113.
5. Zhang, Y.X; Lu, L.Y; Pan, J.M; Liu, H; Ma, J. Preparation a novel phenylcarbazole-based fluorescent sensor for the sensitive and selective detection of CN⁻ in water. *Materials Letters*. 2022, 313. DOI:10.1016/j.matlet.2022.131745.
6. Hu, J.H; Sun, Y; Qi, J; Li, Q; Wei, T.B. A new unsymmetrical azine derivative based on coumarin group as dual-modal sensor for CN⁻ and fluorescent "OFF-ON" for Zn²⁺. *Spectrochimica acta. Part A, Molecular and biomolecular spectroscopy*. 2017, 175:125-133. doi:10.1016/j.saa.2016.12.009.
7. Pei, P.X; Hu, J.H; Chen, Y; Sun, Y; Qi, J. A novel dual-channel chemosensor for CN⁻ using asymmetric double-azine derivatives in aqueous media and its application in bitter almond. *Spectrochimica Acta Part A: Molecular and Biomolecular Spectroscopy*. 2017, 181:131-136. doi: 10.1016/j.saa.2017.03.052.
8. Koc, O.K; Ozay, H. A simple azoquinoline based highly selective colorimetric sensor for CN⁻ anion in aqueous media. *Canadian Journal of Chemistry*. 2017, 0163–. doi:10.1139/cjc-2017-0163.