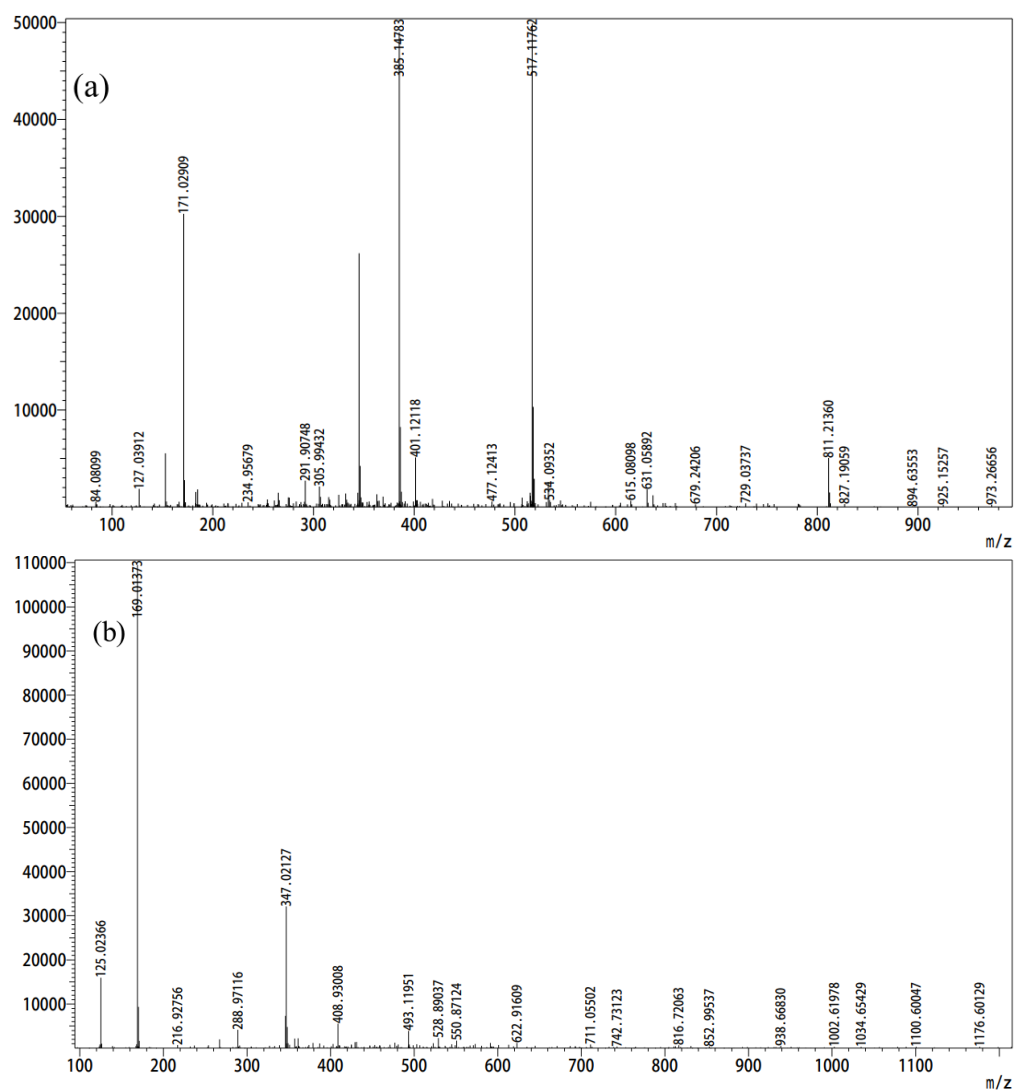


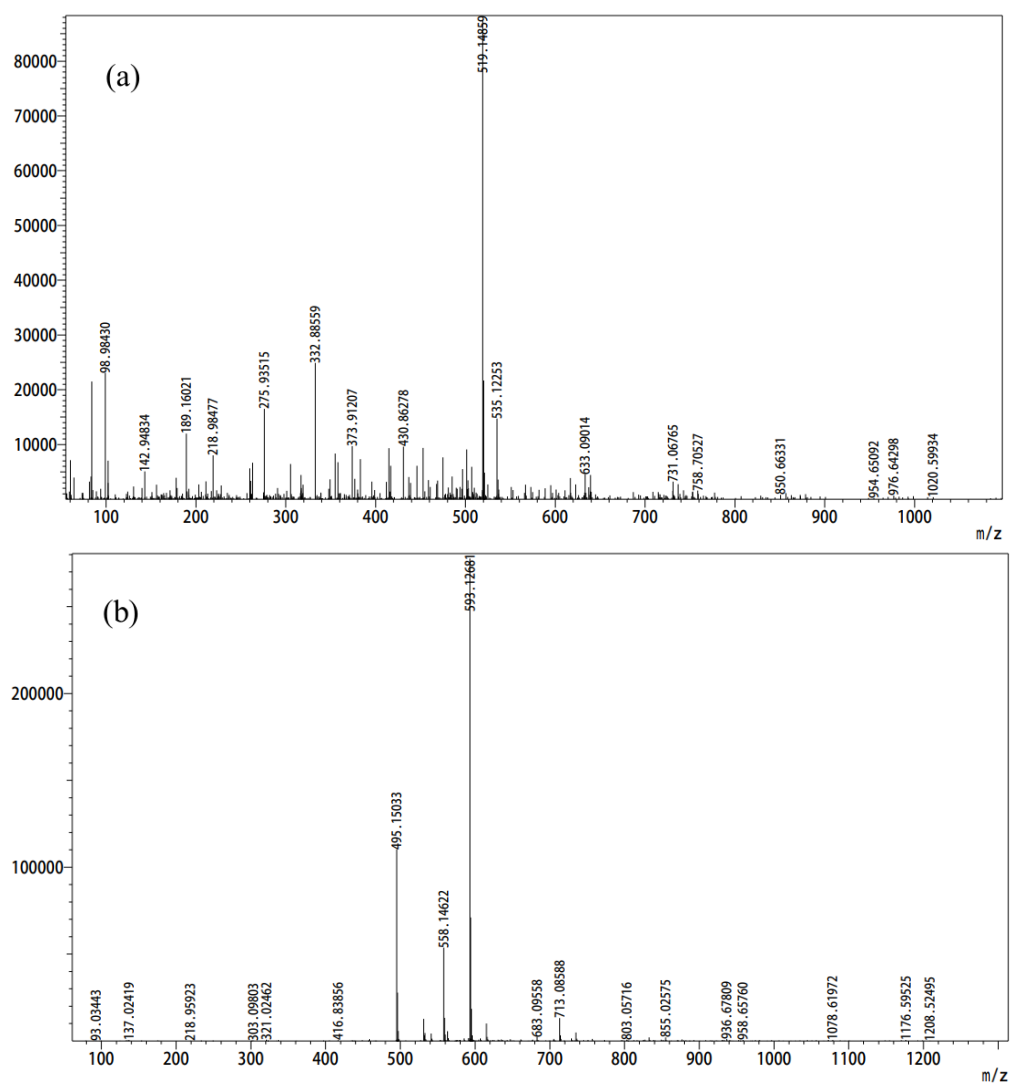
## Supplementary materials

**Table S1.** Chemical and physical properties of different macroporous resins.

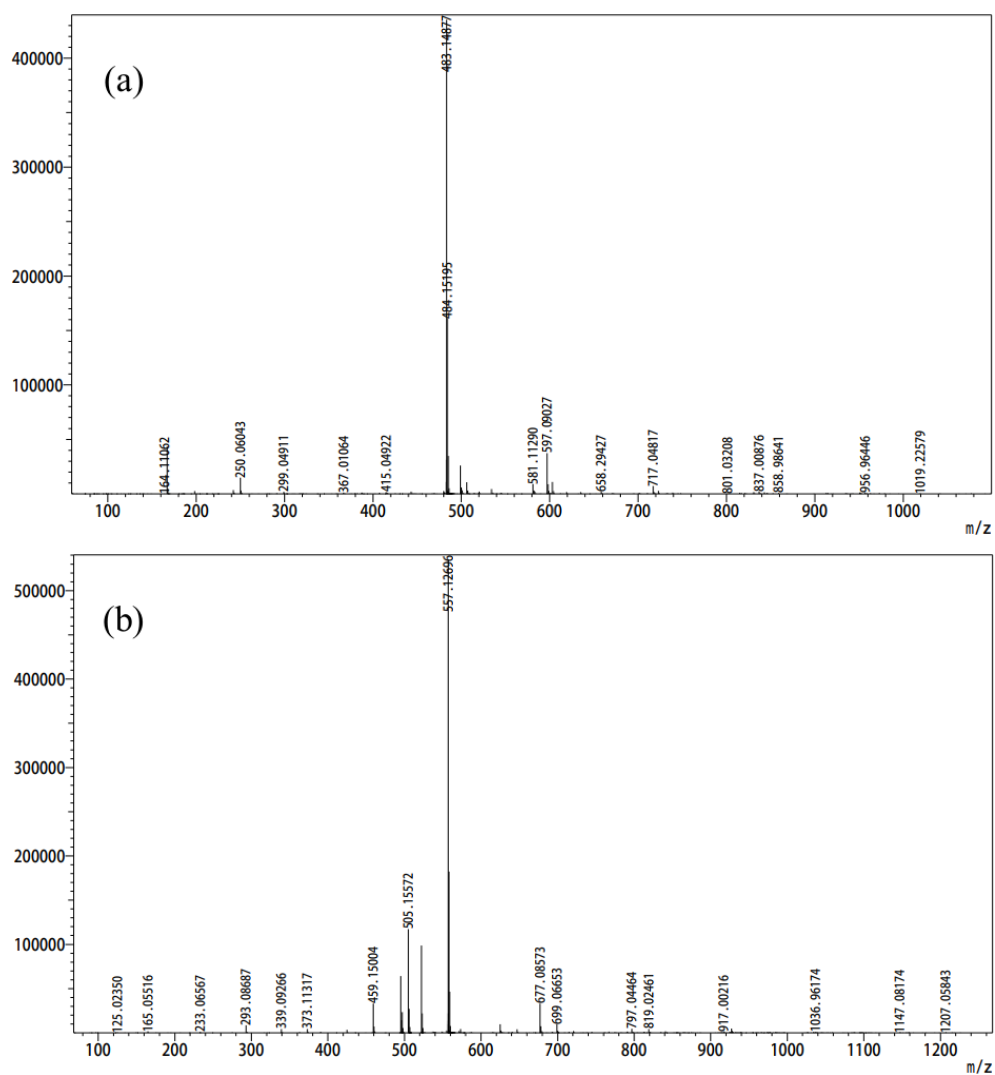
Type of resin	Polarity	Specific surface area (m <sup>2</sup> /g)	Pore diameters (nm)
HPD-300	nonpolar	800-870	27
LSA-900C	nonpolar	>500	12
D-101	nonpolar	≥550	13-14
HPD-100	nonpolar	>550	8.5-9.0
AB-8	weak polar	480-520	13-14
HPD-826	polar	500-600	9.0-10
NKA-9	polar	270	15-16.5
S-8	polar	100-120	28-30



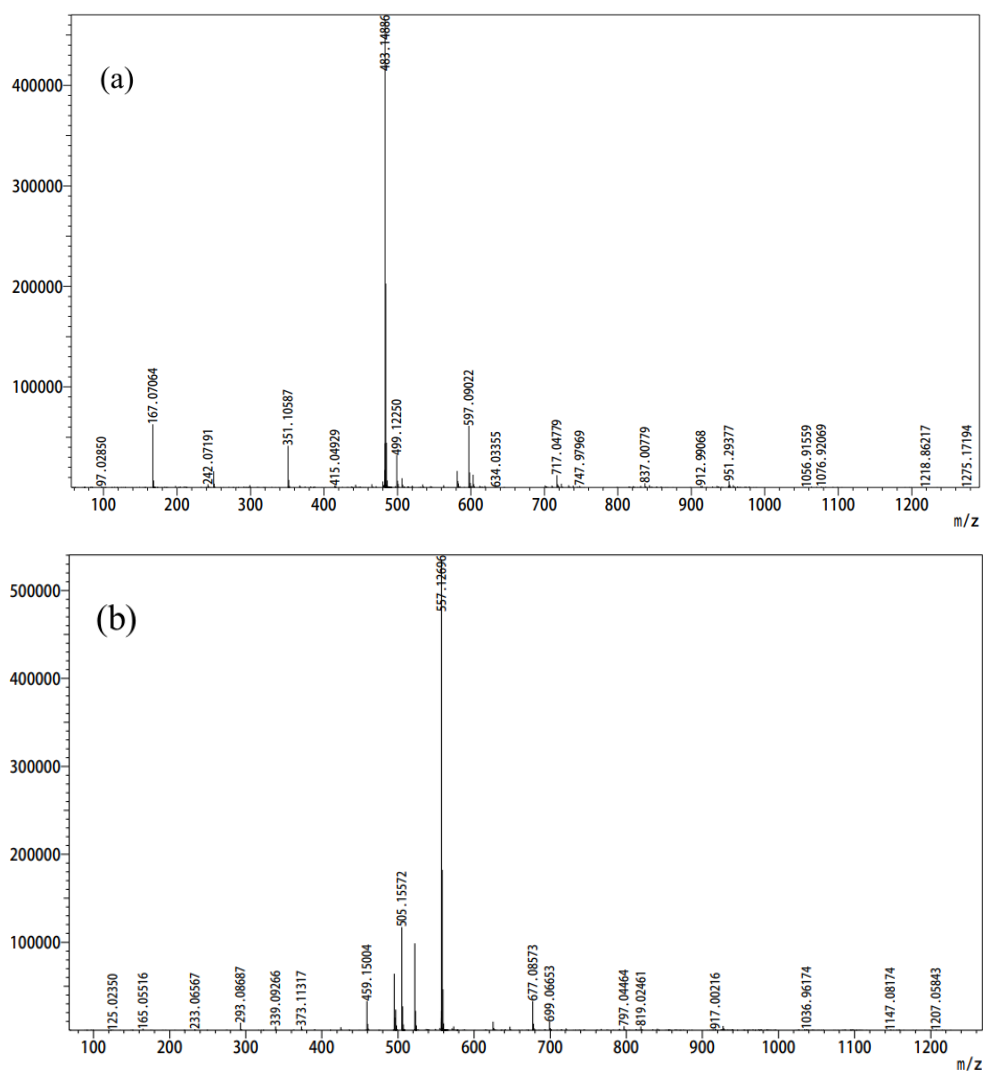
**Figure S1.** The mass spectrum of peak 1: positive ion mode (a); negative ion mode (b).



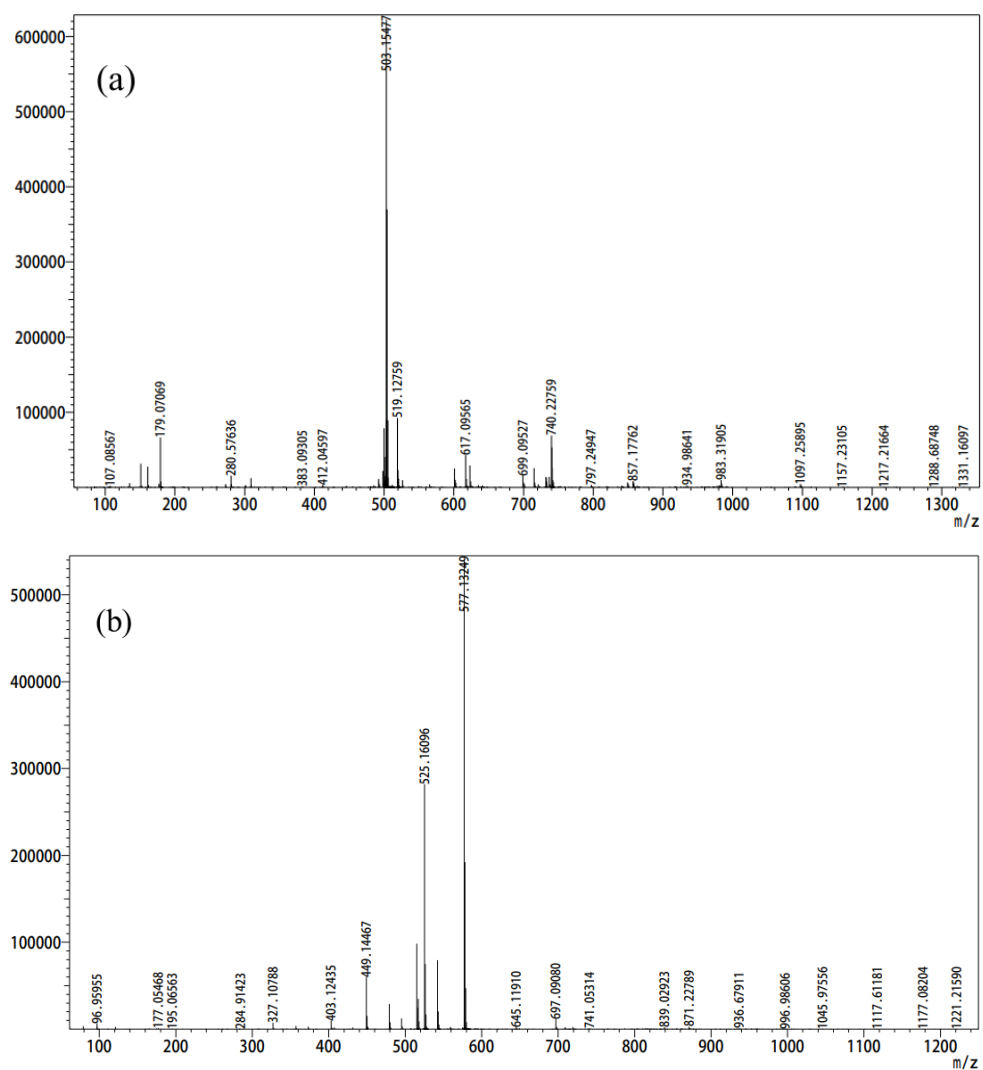
**Figure S2.** The mass spectrum of peak 2: positive ion mode (a); negative ion mode (b).



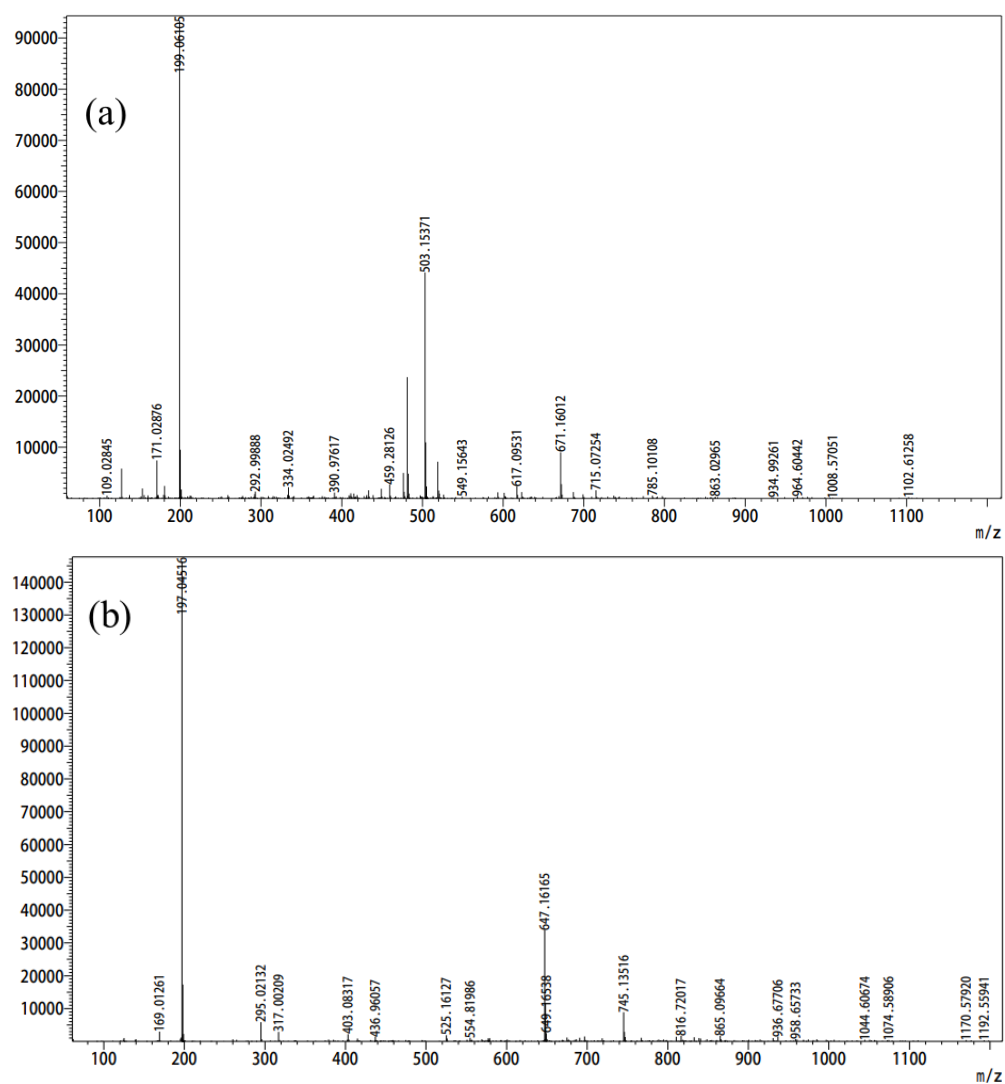
**Figure S3.** The mass spectrum of peak 3: positive ion mode (a); negative ion mode (b).



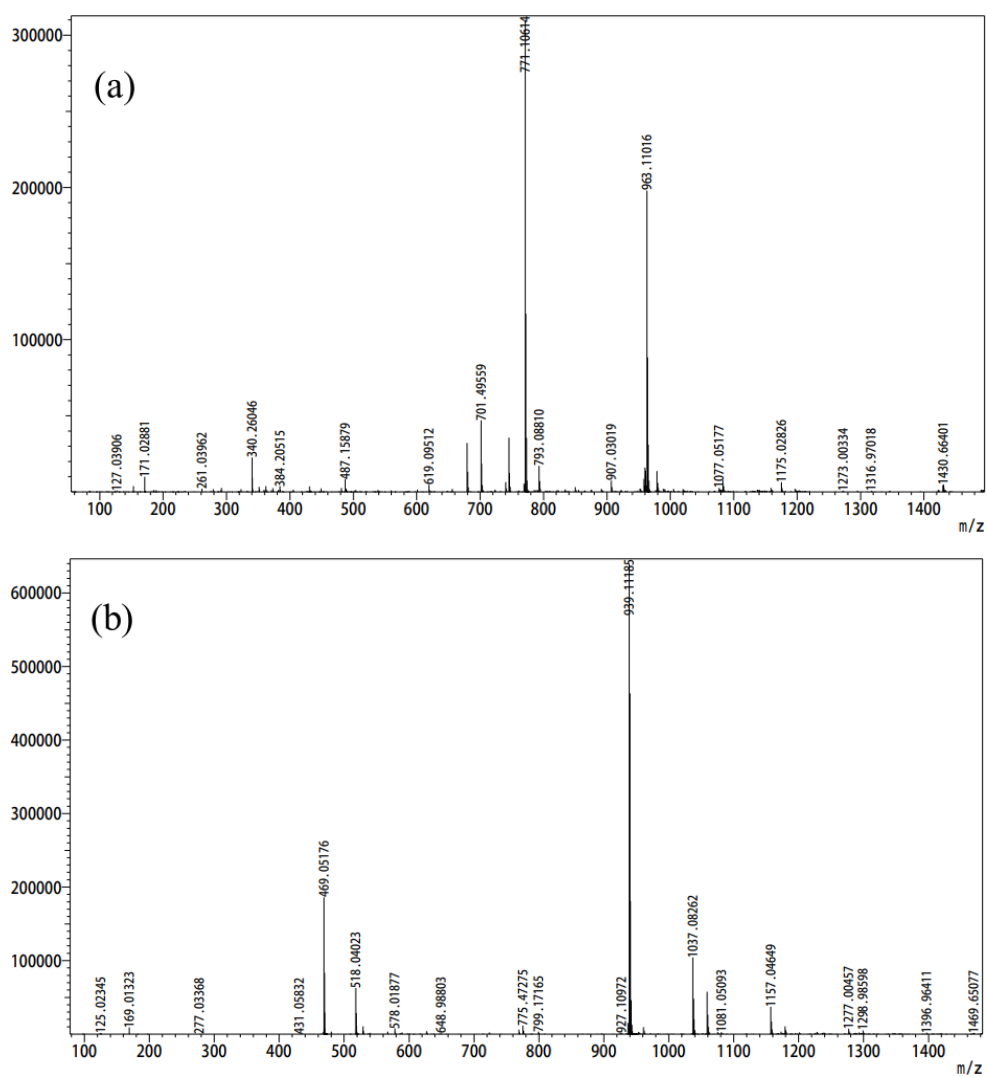
**Figure S4.** The mass spectrum of peak 4: positive ion mode (a); negative ion mode (b).



**Figure S5.** The mass spectrum of peak 5: positive ion mode (a); negative ion mode (b).



**Figure S6.** The mass spectrum of peak 6: positive ion mode (a); negative ion mode (b).



**Figure S7.** The mass spectrum of peak 7: positive ion mode (a); negative ion mode (b).