

Supplementary Materials

Matrix Selection Strategies for MALDI-TOF MS/MS Characterization of Cyclic Tetrapyrroles in Blood and Food Samples

Mariachiara Bianco ¹, Giovanni Ventura ¹, Cosima Damiana Calvano ^{1,2,*}, Ilario Losito ^{1,2}, Tommaso R. I. Cataldi ^{1,2} and Antonio Monopoli ^{1,*}

¹ Department of Chemistry, University of Bari Aldo Moro, 70126 Bari, Italy; mariachiara.bianco@uniba.it (M.B.); giovanni.ventura@uniba.it (G.V.); ilario.losito@uniba.it (I.L.); tommaso.cataldi@uniba.it (T.R.I.C.)

² Interdepartmental Research Center (SMART), University of Bari Aldo Moro, 70126 Bari, Italy

* Correspondence: cosimadamiana.calvano@uniba.it (C.D.C.); antonio.monopoli@uniba.it (A.M.)

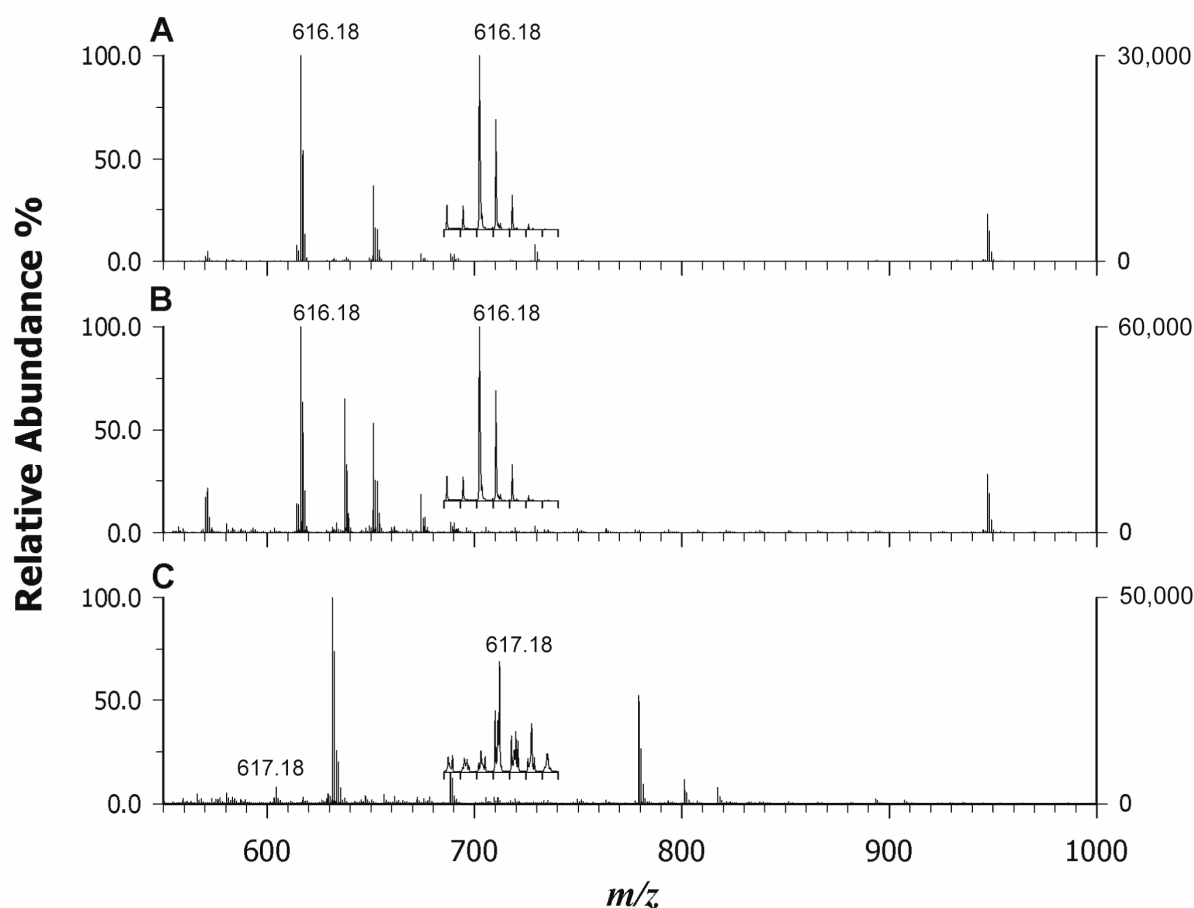


Figure S1. MALDI-ToF mass spectra in positive ion mode using 2-[(2E)-3-(4-tert-butylphenyl)-2-methylprop-2-enylidene]malononitrile (DCTB) as a matrix of heme b in hemoglobin (A), in myoglobin (B), and heme c in cytochrome C (C).

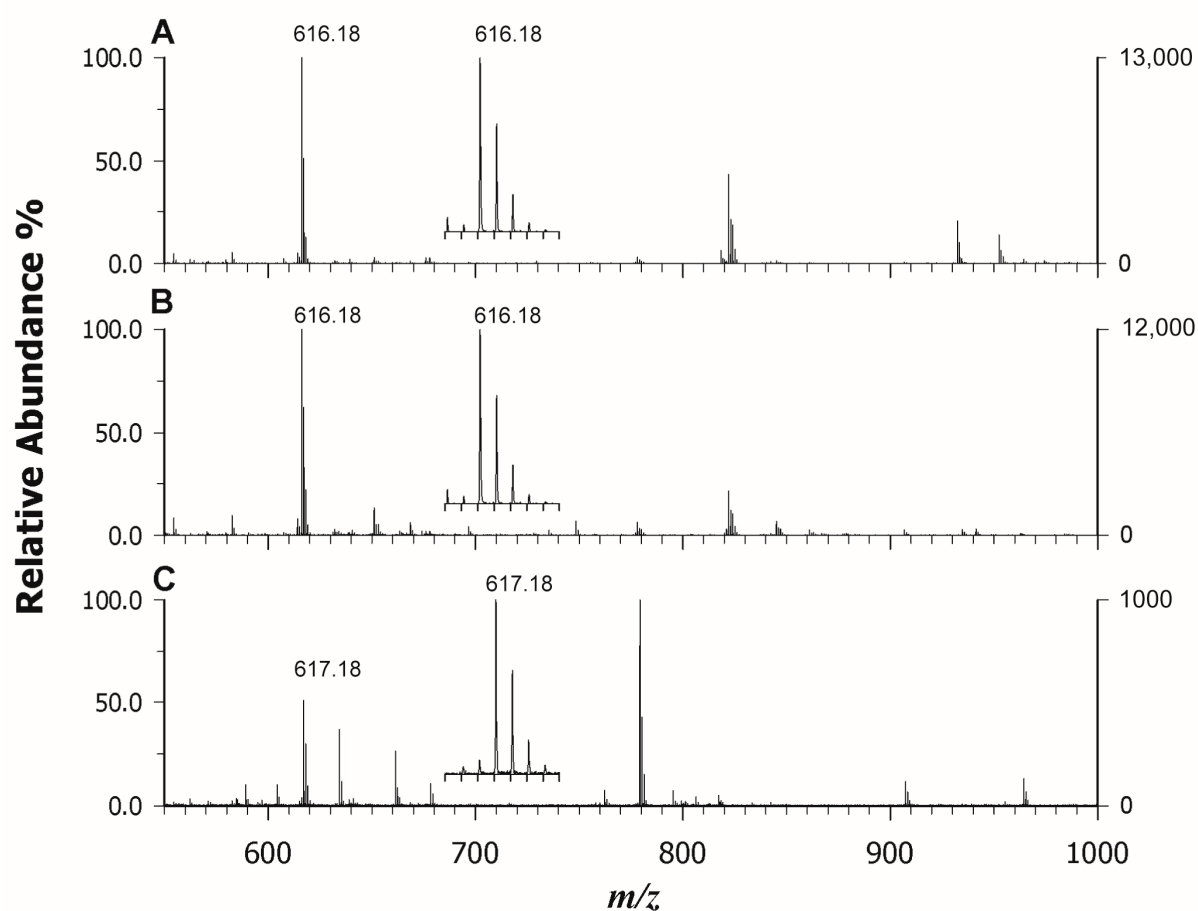


Figure S2. MALDI-ToF mass spectra in positive ion mode using CCICA as a matrix of heme b in hemoglobin (A), in myoglobin (B), and heme c in cytochrome C (C).

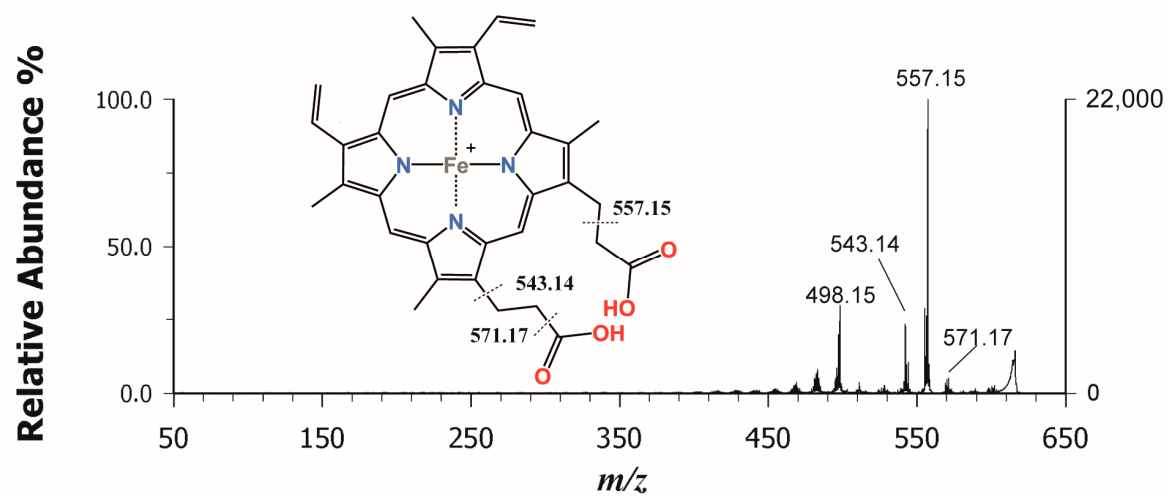


Figure S3. Tandem MS spectrum of heme b from hemoglobin standard protein at m/z 616.18 using CHCA as a matrix.