

Supplementary Information

Figure S1. (A) Silver stained reference 2D-PAGE of depleted MS-CSF pool I separated in pH range 4–9; and (B) reference CSF map available on the SWISS 2D-PAGE database (<http://world-2dpage.expasy.org/swiss-2dpage/>).

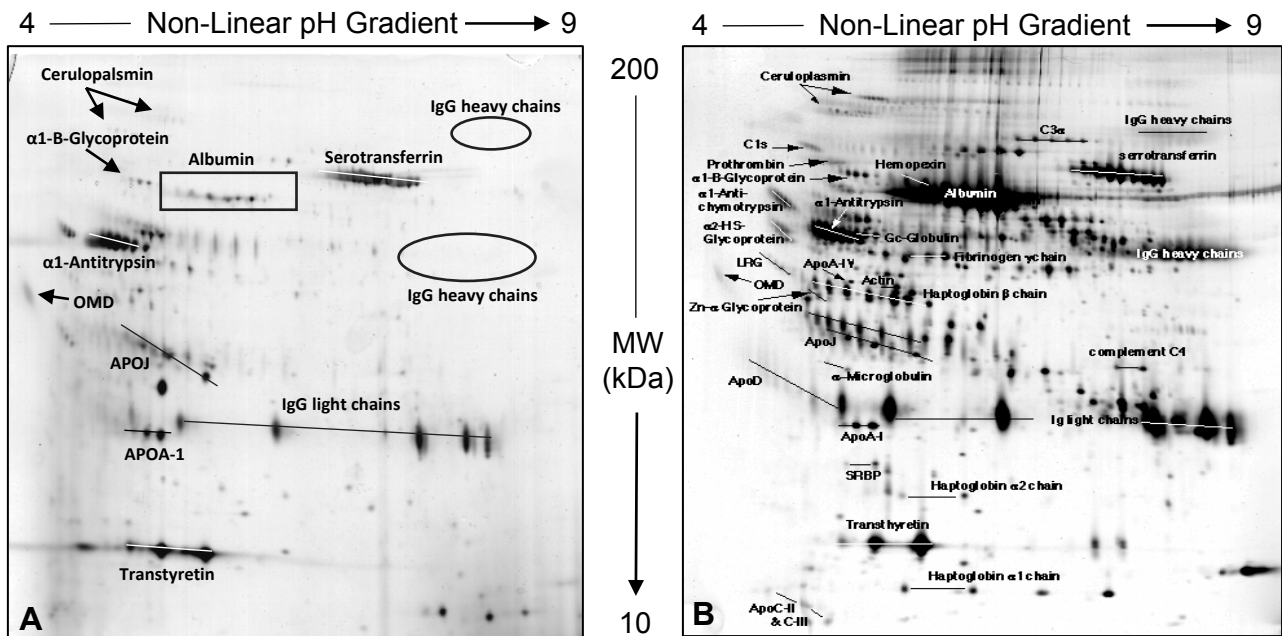


Table S1. List of Cerebrospinal fluid (CSF) and serum samples used in the study.

Sample ID	Sex ^(a)	Age	Clinical Status	Diagnosis	OB ^(b)	Type of Sample		Pooled Samples		Used for 2D-PAGE	CSF as Source of Auto-Abs ^(e)	Serum as Source of Auto-Abs			ELISA	
						CSF	Serum	MS-CSF Pool	MS-Se Pool	MS-CSF Pools	2D WB Analysis	2D WB Analysis	1D WB Analysis	Tested Samples	OD (cutoff \geq 0.2)	
MS-1	F	26	Multiple sclerosis	Relapsing-remitting multiple sclerosis	M	Y ^(c)	Y									
MS-2	F	26	Multiple sclerosis	Relapsing-remitting multiple sclerosis	M	Y	Y	MS-CSF Pool I		Y	Y			Y		0.078
MS-3	F	21	Multiple sclerosis	Relapsing-remitting multiple sclerosis	M	Y	Y							Y		0.040
MS-4	F	38	Multiple sclerosis	Relapsing-remitting multiple sclerosis	M	Y	Y									
MS-5	F	52	Multiple sclerosis	Relapsing-remitting multiple sclerosis	M	Y	Y									
MS-6	M	30	Multiple sclerosis	Relapsing-remitting multiple sclerosis	A	Y	Y	MS-CSF Pool II								
MS-7	M	29	Multiple sclerosis	Relapsing-remitting multiple sclerosis	A	Y	Y			Y	Y					
MS-8	F	27	Multiple sclerosis	Relapsing-remitting multiple sclerosis	A	Y	Y									
MS-9	M	38	Multiple sclerosis	Relapsing-remitting multiple sclerosis	A	Y	Y									
MS-10	F	33	Multiple sclerosis	Relapsing-remitting multiple sclerosis	A	Y	Y							Y		0.348
MS-11	F	25	Multiple sclerosis	Relapsing-remitting multiple sclerosis	M	Y	Y							Y		0.032
MS-12	F	23	Multiple sclerosis	Relapsing-remitting multiple sclerosis	A	Y	Y							Y		0.034
MS-13	F	39	Multiple sclerosis	Relapsing-remitting multiple sclerosis	M	Y	Y							Y		0.055
MS-14	M	35	Multiple sclerosis	Relapsing-remitting multiple sclerosis	UD	Y	Y	MS-CSF Pool III						Y		0.043
MS-15	M	37	Multiple sclerosis	Relapsing-remitting multiple sclerosis	UD	Y	Y			Y	Y			Y		0.042
MS-16	F	37	Multiple sclerosis	Relapsing-remitting multiple sclerosis	M	Y	Y							Y		0.027
MS-17	F	53	Multiple sclerosis	Relapsing-remitting multiple sclerosis	A	Y	Y							Y		0.063
MS-18	M	30	Multiple sclerosis	Relapsing-remitting multiple sclerosis	M	Y	Y							Y		0.038
MS-19	M	35	Multiple sclerosis	Relapsing-remitting multiple sclerosis	M	Y	Y							Y		0.062

Table S1. Cont.

Sample ID	Sex ^(a)	Age	Clinical Status	Diagnosis	OB ^(b)	Type of Sample		Pooled Samples		Used for 2D-PAGE	CSF as Source of Auto-Abs ^(e)	Serum as Source of Auto-Abs			ELISA	
						CSF	Serum	MS-CSF Pool	MS-Se Pool			MS-CSF Pools	2D WB Analysis	2D WB Analysis	1D WB Analysis	Tested Samples
MS-20	F	48	Multiple sclerosis	Relapsing-remitting multiple sclerosis	A	Y	Y								Y	0.038
MS-21	M	21	Multiple sclerosis	Relapsing-remitting multiple sclerosis	A	Y	Y								Y	0.033
MS-22	M	23	Multiple sclerosis	Relapsing-remitting multiple sclerosis	M	Y	Y								Y	0.048
MS-23	F	29	Multiple sclerosis	Relapsing-remitting multiple sclerosis	A	Y	Y	MS-CSF	MS-Se	Y	N	Y ^(f)			Y	0.268
MS-24	F	55	Multiple sclerosis	Relapsing-remitting multiple sclerosis	M	Y	Y	Pool IV	pool						Y	0.345
MS-25	F	48	Multiple sclerosis	Relapsing-remitting multiple sclerosis	M	Y	Y							Y	Y	0.227
MS-26	F	38	Multiple sclerosis	Relapsing-remitting multiple sclerosis	UD	Y	Y								Y	0.057
MS-27	F	32	Multiple sclerosis	Relapsing-remitting multiple sclerosis	UD	Y	Y								Y	0.061
MS-28	F	53	Multiple sclerosis	Relapsing-remitting multiple sclerosis	A	N ^(d)	Y								Y	0.221
MS-29	F	48	Multiple sclerosis	Relapsing-remitting multiple sclerosis	M	N	Y								Y	0.034
MS-30	M	47	Multiple sclerosis	Relapsing-remitting multiple sclerosis	UD	N	Y								Y	0.033
MS-31	F	39	Multiple sclerosis	Relapsing-remitting multiple sclerosis	A	N	Y								Y	0.035
MS-32	F	21	Multiple sclerosis	Relapsing-remitting multiple sclerosis	M	N	Y								Y	0.061
MS-33	M	58	Multiple sclerosis	Relapsing-remitting multiple sclerosis	A	N	Y								Y	0.027
MS-34	F	39	Multiple sclerosis	Relapsing-remitting multiple sclerosis	UD	N	Y								Y	0.030
MS-35	F	45	Multiple sclerosis	Relapsing-remitting multiple sclerosis	A	N	Y								Y	0.068
MS-36	M	24	Multiple sclerosis	Relapsing-remitting multiple sclerosis	I	N	Y								Y	0.043
MS-37	F	51	Multiple sclerosis	Relapsing-remitting multiple sclerosis	M	N	Y								Y	0.068
MS-38	M	39	Multiple sclerosis	Relapsing-remitting multiple sclerosis	A	N	Y								Y	0.025
MS-39	F	31	Multiple sclerosis	Relapsing-remitting multiple sclerosis	M	N	Y								Y	0.047
MS-40	M	46	Multiple sclerosis	Relapsing-remitting multiple sclerosis	UD	N	Y								Y	0.049
MS-41	F	28	Multiple sclerosis	Relapsing-remitting multiple sclerosis	M	N	Y								Y	0.320
MS-42	F	30	Multiple sclerosis	Relapsing-remitting multiple sclerosis	UR	N	Y								Y	0.124

Table S1. Cont.

Sample ID	Sex ^(a)	Age	Clinical Status	Diagnosis	OB ^(b)	Type of Sample		Pooled Samples		Used for 2D-PAGE	CSF as Source of Auto-Abs ^(e)	Serum as Source of Auto-Abs			ELISA
						CSF	Serum	MS-CSF Pool	MS-Se Pool	MS-CSF Pools	2D WB Analysis	2D WB Analysis	1D WB Analysis	Tested Samples	OD (cutoff \geq 0.2)
MIG-1	F	36	Migraine	Migraine	N	Y					Y				
MIG-2	F	26	Migraine	Migraine	N	Y					Y				
MIG-3	F	43	Migraine	Migraine	N	Y					Y				
NEU-1	M	79	Neurologic disease	Chronic inflammatory demyelinating polyneuropathy	N	N	Y							Y	0.073
NEU-2	M	16	Neurologic disease	Encephalitis	N	N	Y							Y	0.026
NEU-3	F	19	Neurologic disease	Guillain-Barre Syndrome	N	N	Y							Y	0.028
NEU-4	F	47	Neurologic disease	Pituitary adenoma	UD	N	Y							Y	0.085
NEU-5	F	31	Neurologic disease	Myelitis	N	N	Y							Y	0.039
NEU-6	M	50	Neurologic disease	Myelitis	multiple	N	Y							Y	0.025
NEU-7	M	71	Neurologic disease	Acute disseminated encephalomyelitis		N	Y							Y	0.030
NEU-8	M	81	Neurologic disease	Chronic inflammatory demyelinating polyneuropathy		N	Y							Y	0.044
NEU-9	M	49	Neurologic disease	Chronic inflammatory demyelinating polyneuropathy		N	Y							Y	0.039
NEU-10	F	83	Neurologic disease	Dementia		N	Y							Y	0.021
NEU-11	F	62	Neurologic disease	Dementia		N	Y							Y	0.097
NEU-12	M	81	Neurologic disease	Epilepsy		N	Y							Y	0.061
NEU-13	F	19	Neurologic disease	Epilepsy		N	Y							Y	0.077
NEU-14	F	70	Neurologic disease	Epilepsy		N	Y							Y	0.050

Table S1. *Cont.*

Sample ID	Sex ^(a)	Age	Clinical Status	Diagnosis	OB ^(b)	Type of Sample		Pooled Samples		Used for 2D-PAGE	CSF as Source of Auto-Abs ^(e)	Serum as Source of Auto-Abs			ELISA	
						CSF	Serum	MS-CSF Pool	MS-Se Pool	MS-CSF Pools	2D WB Analysis	2D WB Analysis	1D WB Analysis	Tested Samples	OD (cutoff \geq 0.2)	
H-62	F	36	Healthy individual			N	Y								Y	0.000
H-63	F	30	Healthy individual			N	Y								Y	0.023
H-64	F	29	Healthy individual			N	Y								Y	0.188
H-65	M	42	Healthy individual			N	Y								Y	0.008
H-66	F	53	Healthy individual			N	Y								Y	0.054
H-67	F	60	Healthy individual			N	Y								Y	0.103
H-68	M	37	Healthy individual			N	Y								Y	0.050
H-69	F	41	Healthy individual			N	Y								Y	0.161
H-70	F	26	Healthy individual			N	Y								Y	0.081
H-71	M	33	Healthy individual			N	Y								Y	0.029
H-72	M	19	Healthy individual			N	Y								Y	0.027
H-73	M	22	Healthy individual			N	Y								Y	0.035
H-74	M	38	Healthy individual			N	Y								Y	0.037
H-75	F	54	Healthy individual			N	Y								Y	0.000
H-76	M	46	Healthy individual			N	Y								Y	0.049
H-77	M	20	Healthy individual			N	Y								Y	0.037
H-78	F	31	Healthy individual			N	Y								Y	0.097
H-79	F	47	Healthy individual			N	Y								Y	0.046
H-80	M	28	Healthy individual			N	Y								Y	0.054

^(a) M: male; F: female; ^(b) OB: Oligoclonal Band; M: Multiple; A: Absent; UD: Undetected; UR: Unreported; ^(c) Y: Yes; ^(d) N: No; ^(e) Abs: Antibodies; ^(f) The serum sample MS-25 included in this pool was also tested as single sample in 2D-immunoblotting described in the text. WB, western blots.