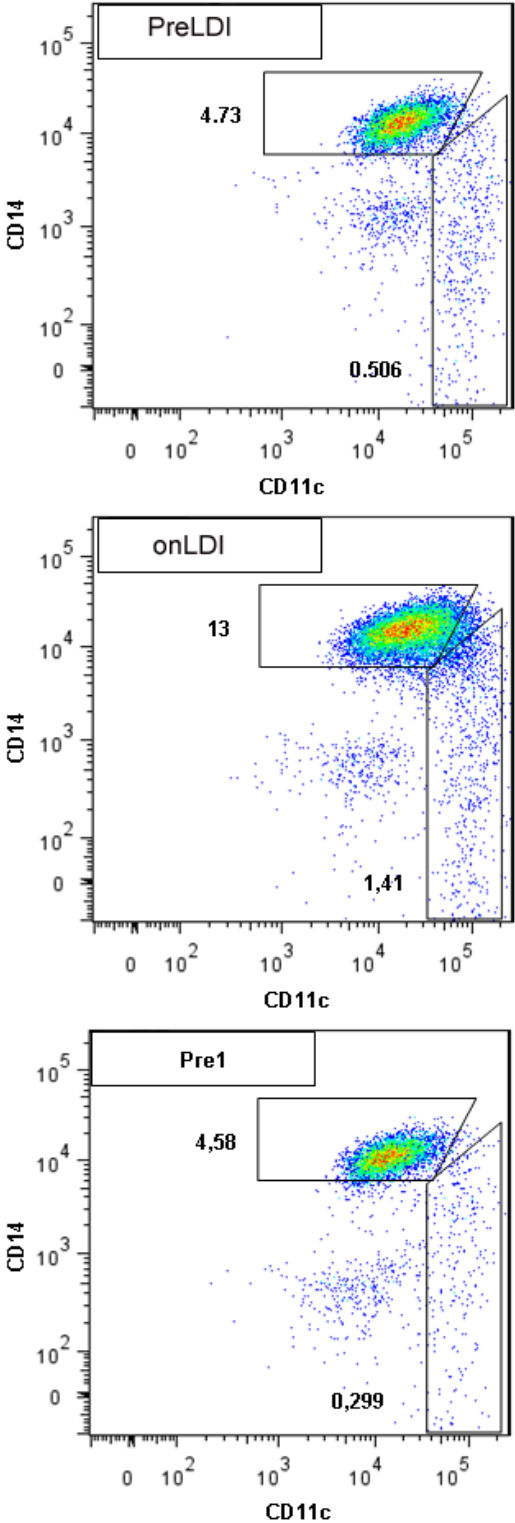
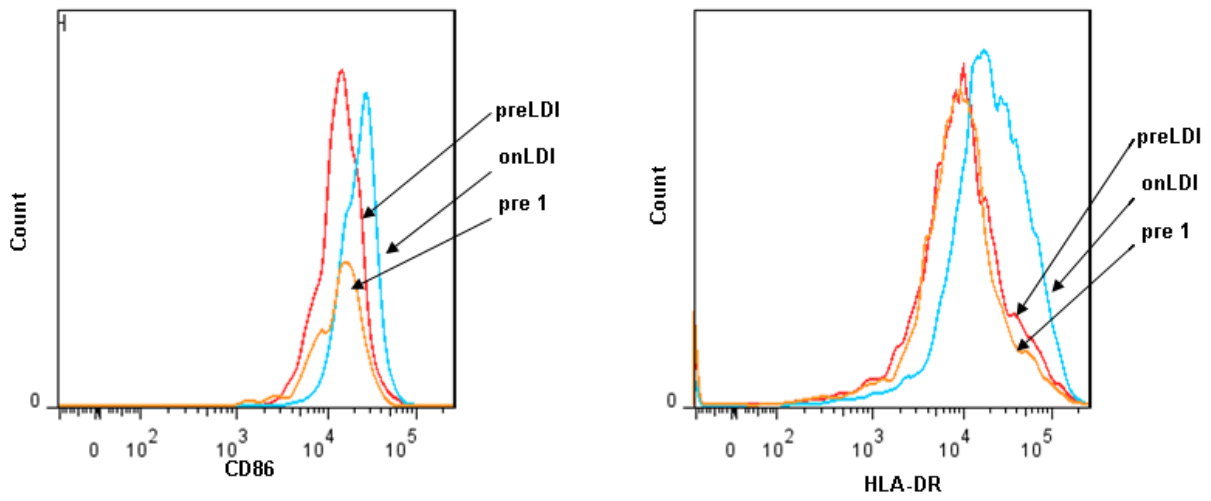


# Supplementary Information

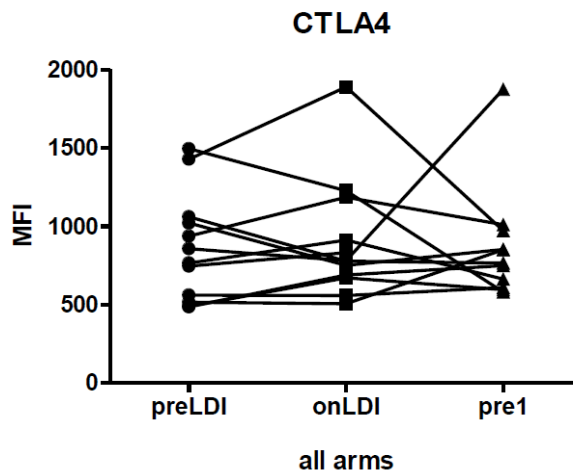
**Figure S1.** Representative FACS picture of monocyte and DC analysis of one patient before and during IFN therapy. The percentage from total leukocytes is notified.



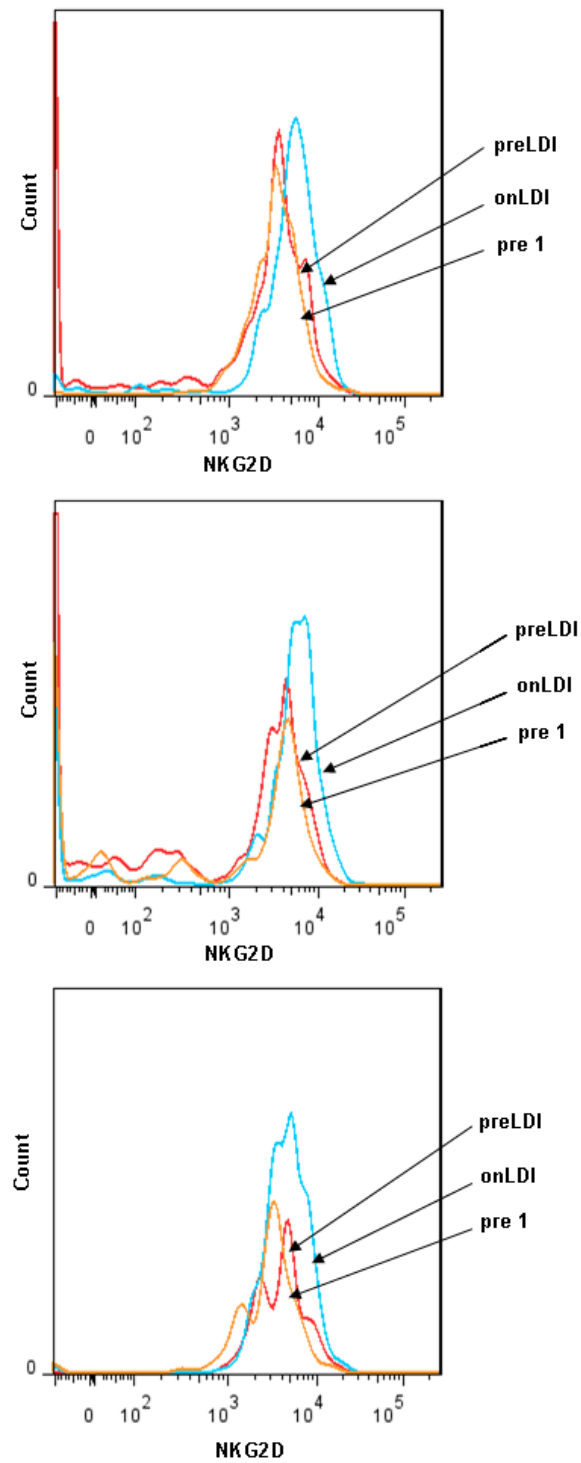
**Figure S2.** Representative pictures of FACS analysis of CD86 (left) and HLA-DR (right) expression of one patient before and during IFN therapy.



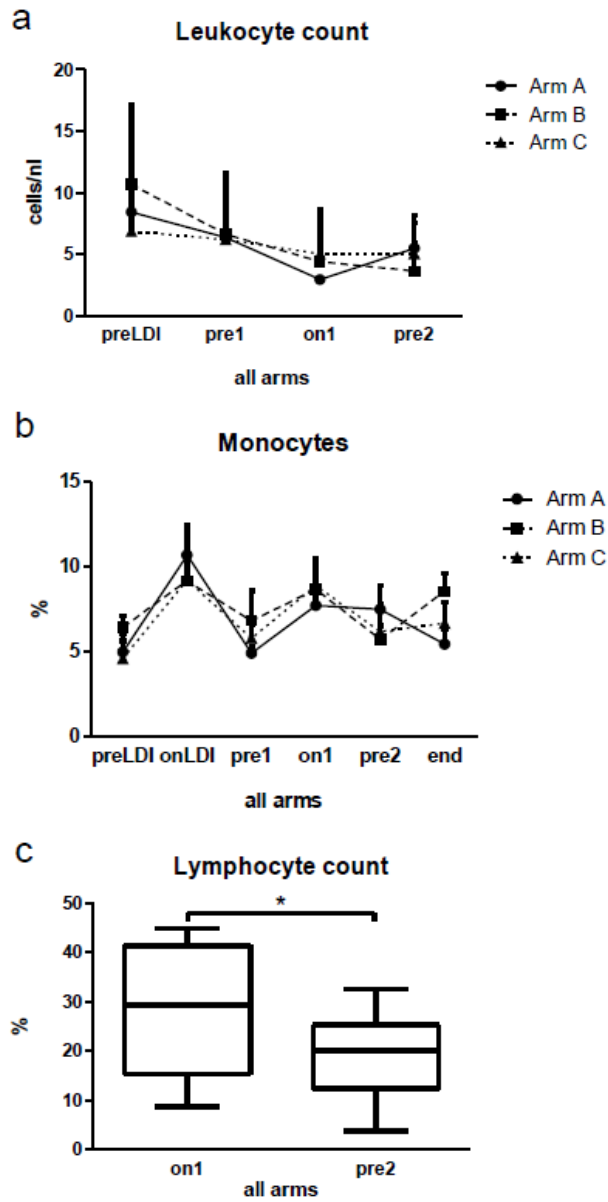
**Figure S3.** Expression of CTLA4 on the surface of CD4<sup>+</sup> cells during the course of IFN therapy. Immunological parameters of 17 patients were analyzed.



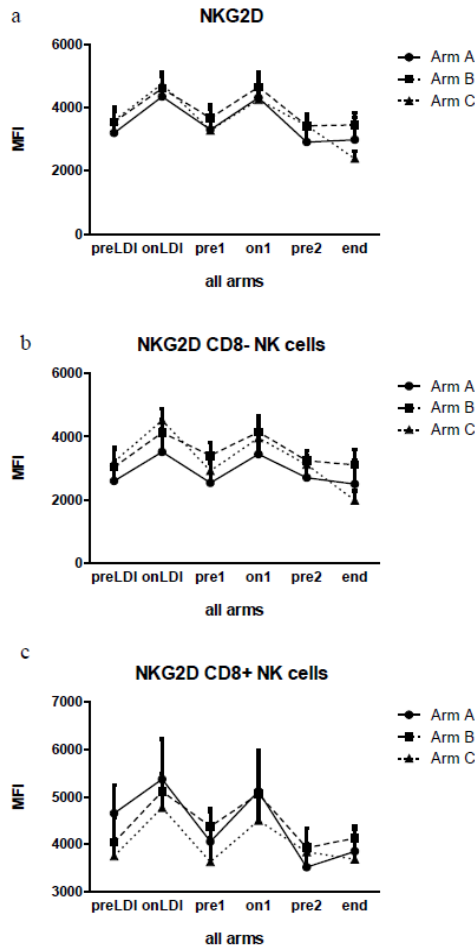
**Figure S4.** Representative pictures of FACS analysis of NKG2D on all NK cells (**upper panel**), on CD8<sup>-</sup> NK cells (**middle panel**) and on CD8<sup>+</sup> NK cells (**low panel**) of one patient before and during IFN therapy.



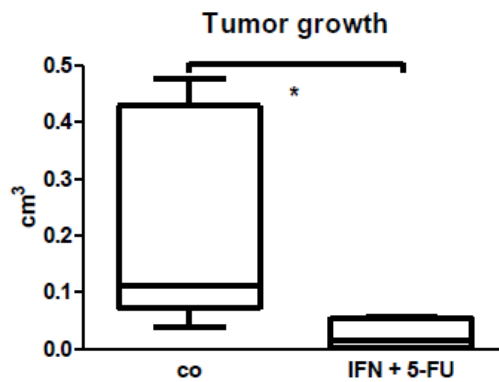
**Figure S5.** Leukocytes in all arms during the course of chemo-radio-immunotherapy. **(a)** Leukocyte count (clinical chemistry), no data for onLDI and end time-points; **(b)** FACS analysis of monocytes; for **(a)** and **(b)**: Arm A  $n = 5$ , Arm B and C  $n = 6$ ; **(c)** Relative amount of lymphocytes in all arms during the chemo-immunotherapy/chemo-radio-immunotherapy,  $n = 17$ , \*,  $p < 0.05$ .



**Figure S6.** NK-cells: Expression of NKG2D on the surface of all CD45<sup>+</sup>CD56<sup>+</sup> cells (a); CD45<sup>+</sup>CD56<sup>+</sup>CD8<sup>-</sup> cells (b); and CD45<sup>+</sup>CD56<sup>+</sup>CD8<sup>+</sup> cells (c) in all arms during the course of chemo-radio-immunotherapy. Arm A *n* = 5, Arm B and C *n* = 6.



**Figure S7.** Tumor growth in Panc02 tumor-bearing mice treated with a combination of IFN and 5-FU. Six animals per group were analyzed, \*, *p* < 0.05.



**Table S1.** Difference in patients' characteristics between study arms.

Arm	Number of patients	Gender			Resection			Tumor grade			TNM			TNM			Relapse			2-y survivor		5-y survivor		
		M	F	<i>p</i>	R0	R1	<i>p</i>	G2	G3	<i>p</i>	T2	T3	<i>p</i>	N0	N1	<i>p</i>	yes	no	<i>p</i>	<i>n</i> (%)	<i>p</i>	<i>n</i> (%)	<i>p</i>	
A	5	4	1	0.89	0	5	0.39	5	0	0.89	1	5	0.69	0	1	0.47	3	2	0.94	1 (20)	0.4	0	0.22	
B	6	4	2		2	4		4	1		0	6		0	6		4	2		5 (83)		9		2 (33)
C	6	3	3		0	6		5	1		0	6		1	5		5	1		3 (50)				0

© 2014 by the authors; licensee MDPI, Basel, Switzerland. This article is an open access article distributed under the terms and conditions of the Creative Commons Attribution license (<http://creativecommons.org/licenses/by/3.0/>).