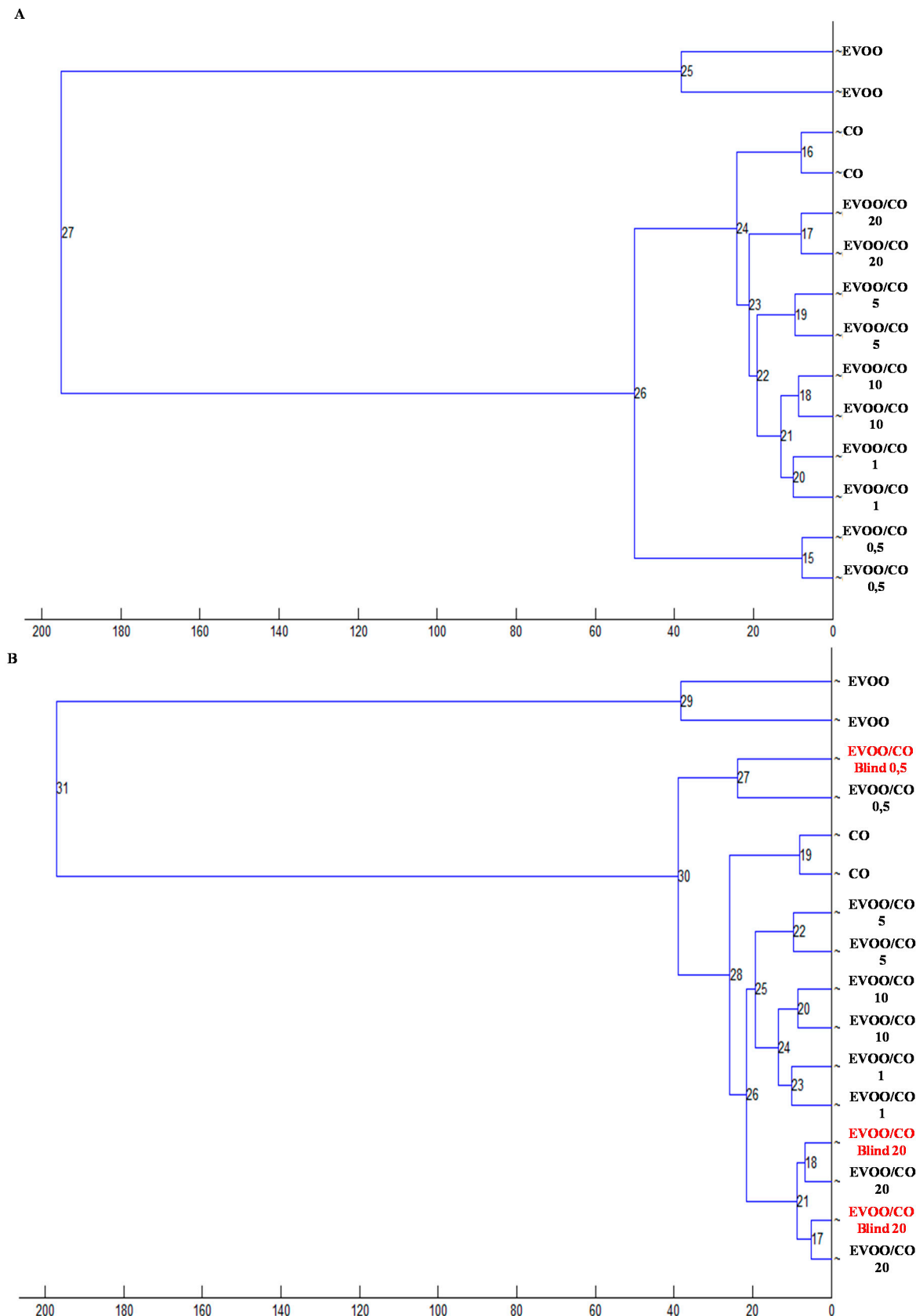
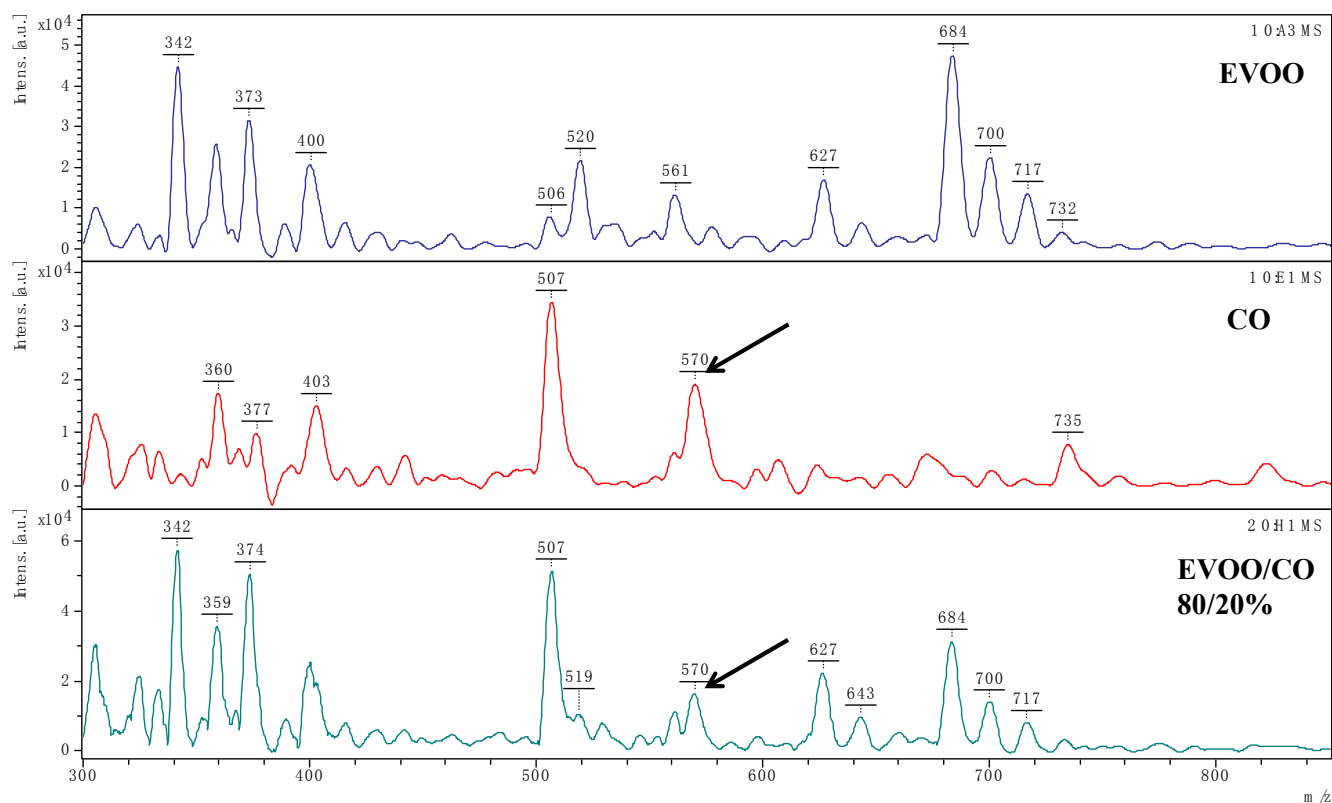


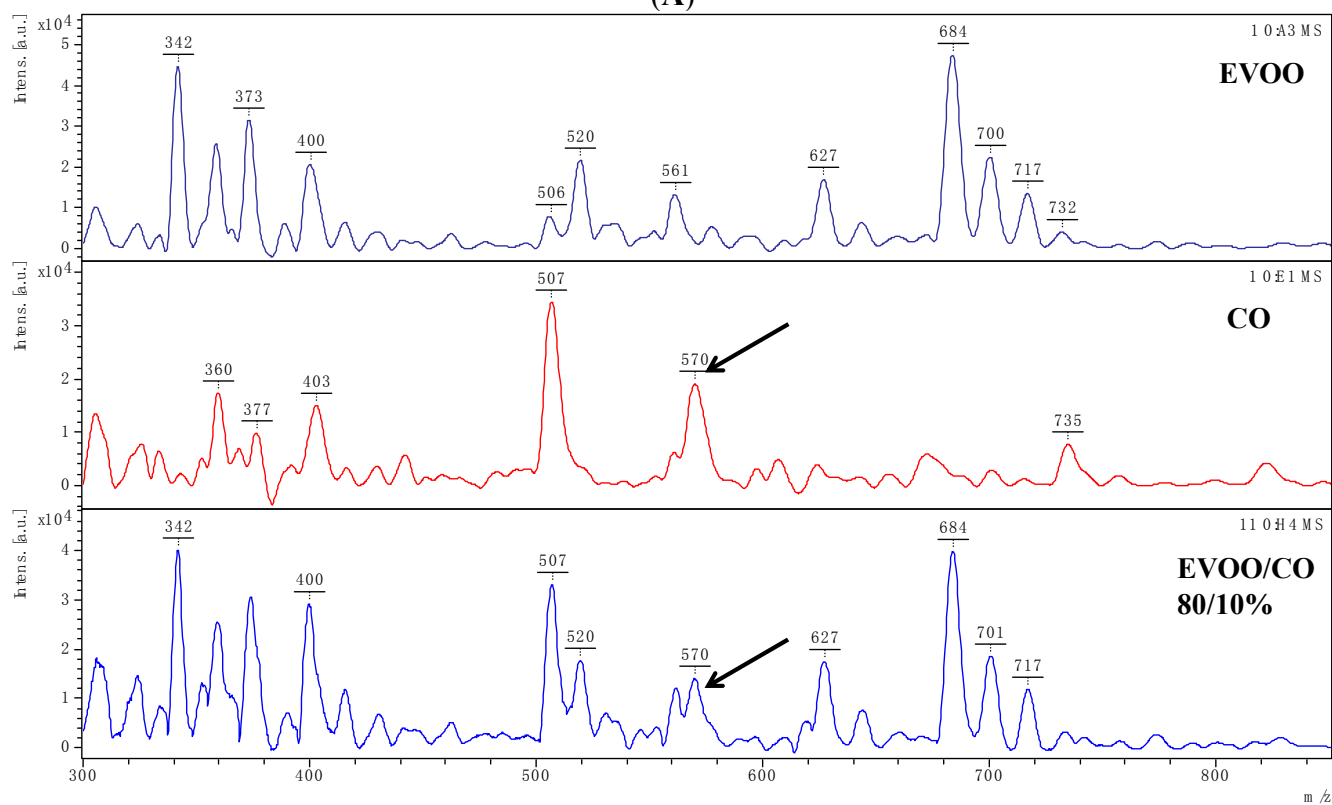
# Supplementary Information



**Figure S1.** Two blinded CO/EVOO mixtures (A,B) were prepared (volume ratios, 20/80, 0.5/99.5) and another investigator analyzed them (independent blind analysis) and identified both the adulteration levels (red) by means of ClinProTools software.

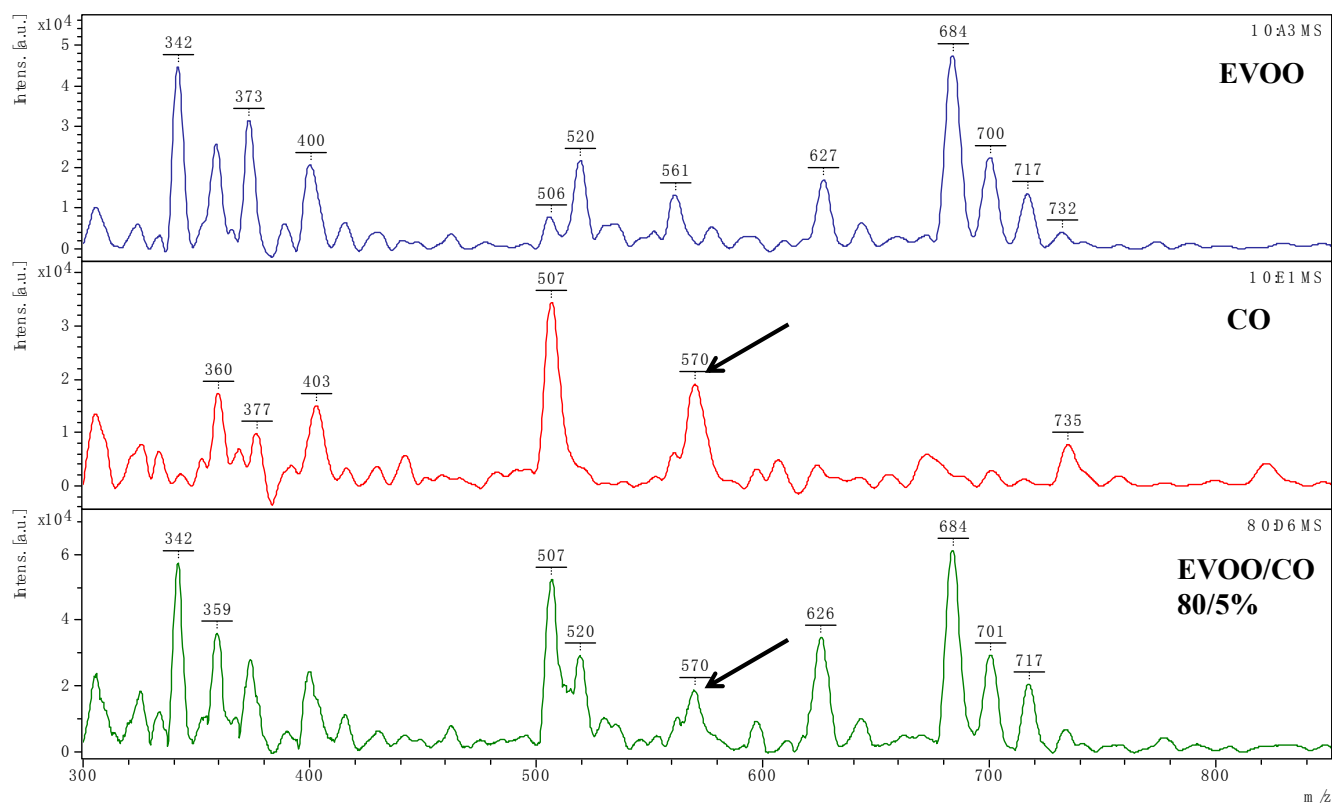


(A)

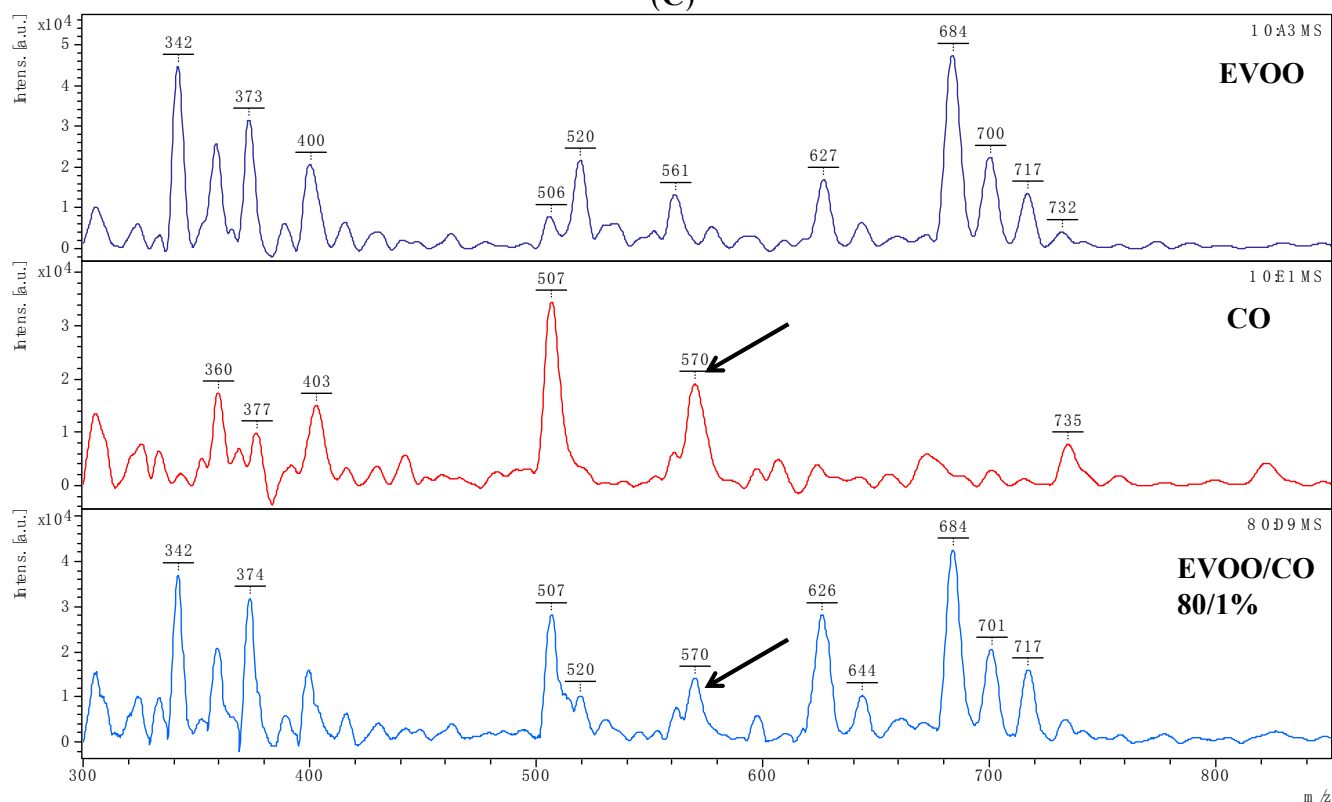


(B)

Figure S2. Cont.

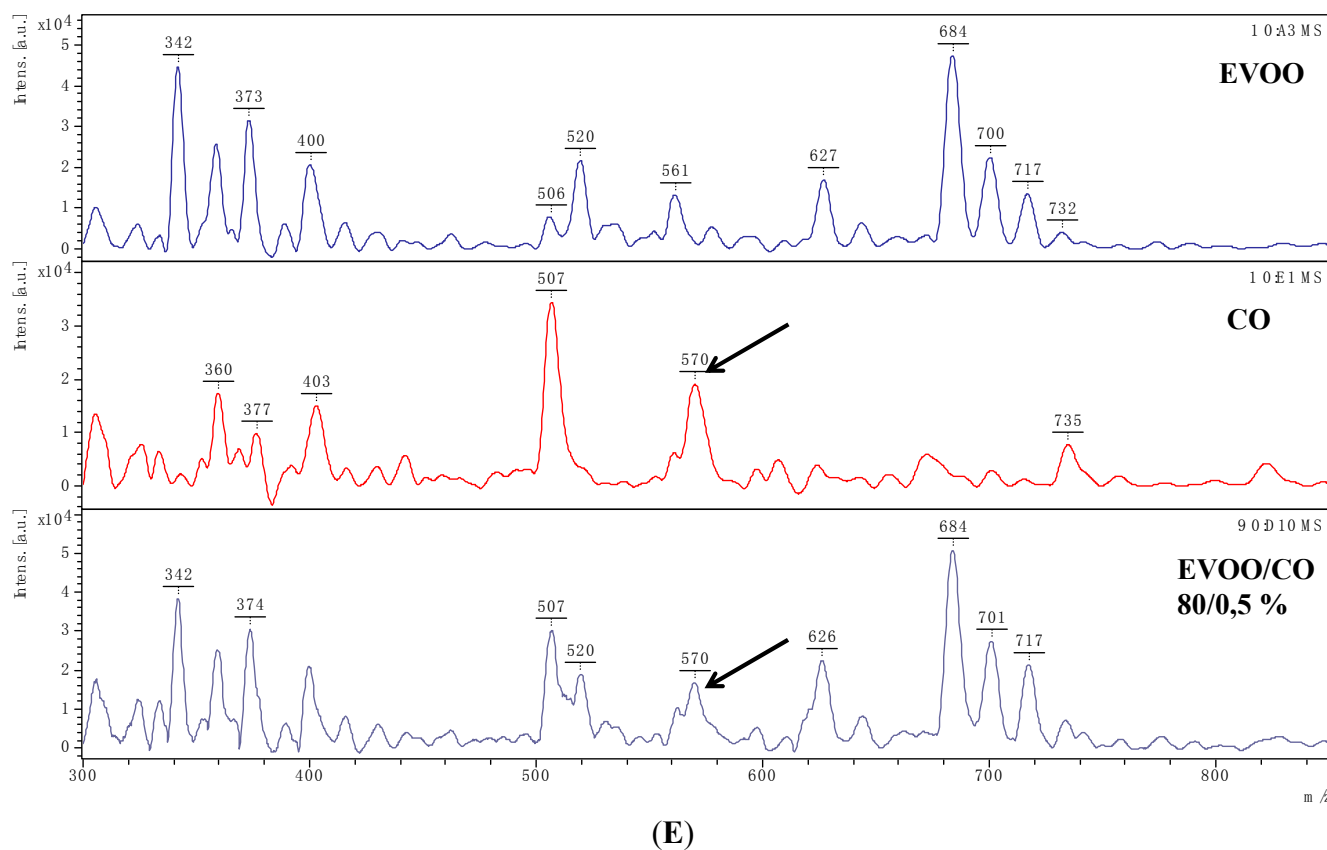


(C)



(D)

Figure S2. Cont.



**Figure S2.** The  $m/z = 570$  (indicated from the arrows) represents the discriminating peak of the all adulteration levels (panels A–E).