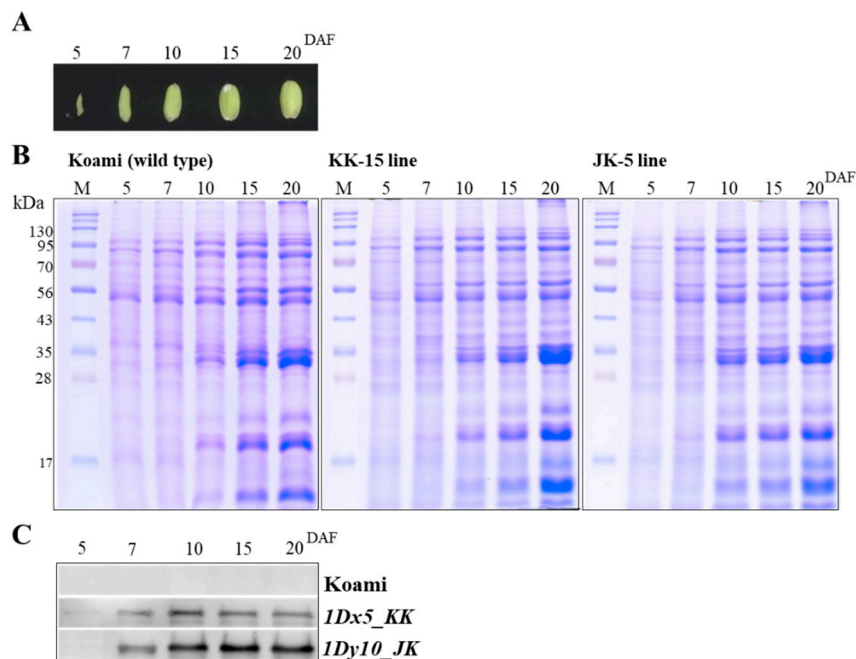
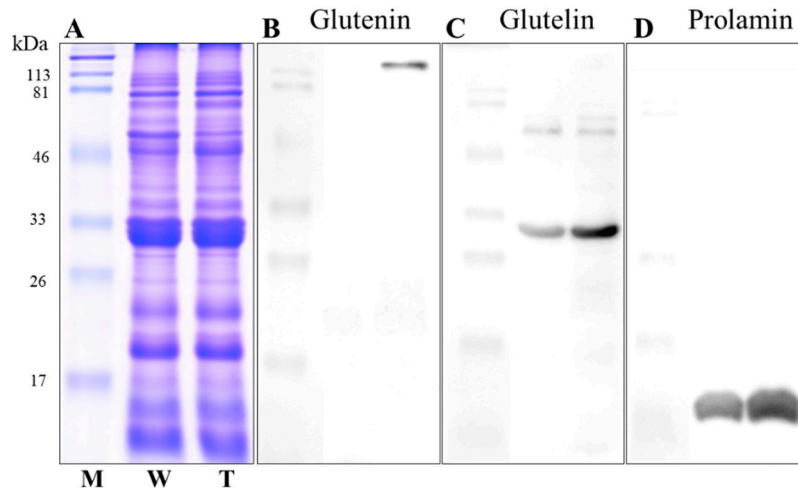


**Figure S1.** Reverse transcription polymerase chain reaction (RT-PCR) analysis of wheat HMW-GSs, *1Dx5\_KK* and *1Dy10\_JK* in Koami (wild-type, W) and independent transgenic rice lines. (A) KK lines (15) overexpressing *1Dx5\_KK*; (B) JK lines (6) overexpressing *1Dy10\_JK*; UBI, ubiquitin



**Figure S2.** Molecular events according to seed development stage in Koami (wild-type), KK-15 line overexpressing *1Dx5\_KK* and JK-5 line overexpressing *1Dy10\_JK*. A) Morphological changes according to seed maturation; B) Expression analysis of seed storage proteins at 5-20 day after flowering (DAF) using SDS-PAGE; C) Expression analysis of wheat HMW-GSs at 5-20 DAF using western blot.



**Figure S3.** Specificity Analysis of three primary antibodies to glutenin, glutelin and prolamin for immunofluorescence. (A) The separation of total seed storage proteins extracted from Koami (wild type, W) and transgenic rice (T, KK-3 line) using SDS-PAGE. Western blot analysis with polyclonal-rat anti HMW-glutenin (B), polyclonal-rabbit anti glutelin B1-2 subunit (C) and polyclonal-rabbit anti 13kD prolamin (D). M, marker.

**Table S1.** Sequence of primers used for cloning and qRT-PCR.

Gene symbol	Target gene	Accession #	Forward primer	Reverse primer	Product size
1Dx5	HMW-GS <i>Glu1Dx5</i>	AB485591	5'-AAAAAGCAGGCTATGGCTAA GCGGTTAGTCCTCTTTGTG-3'	5'-AGAAAGCTGGGTCTATCACTGG CTCGACAATGCGTC-3'	2547
1Dy10	HMW-GS <i>Glu1Dy10</i>	AB281268	5'-AAAAAGCAGGCTATGGCTAA GCGGCTGGTCCTCTTTGCG-3'	5'-AGAAAGCTGGGTCTATCACTGG CTAGCCGACAATGCGTC-3'	1947
1Dx5-RT	HMW-GS <i>Glu1Dx5</i>	AB485591	5'-CAACAGCTCCGAGACATTAG- 3'	5'-GTGCAGGTATTCCCCAAAAT-3'	169
1Dy10-RT	HMW-GS <i>Glu1Dy10</i>	AB281268	5'-ACTGCAGCAACTCCAACAAG- 3'	5'-GGAGAAGCTTGGCCTGGATA-3'	117
UBI	<i>Ubiquitin</i>	-	5'-TGGTTCAGTAATCAGCCAGTTT GG-3'	5'-GCACCACAAATACTTGACGAA CAG-3'	81