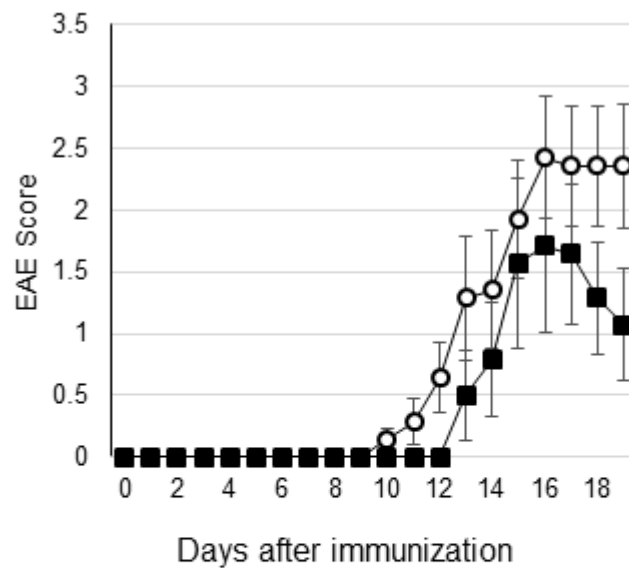


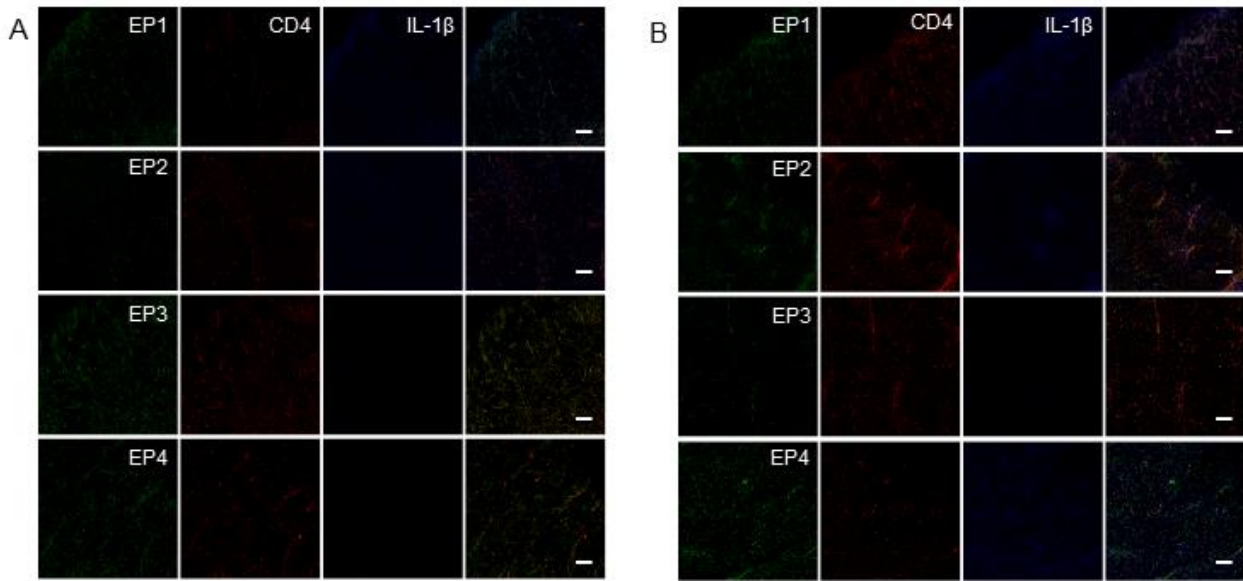
Supplementary Figure 1.

Immunohistochemistry image of microsomal PGE₂ synthase-1 (mPGES -1) (green) with CD19 (red) in the inflammatory region of spinal cords of EAE wild-type (wt) mice (A) and control wt mice (B). Scale bars (20 μm) for all images.



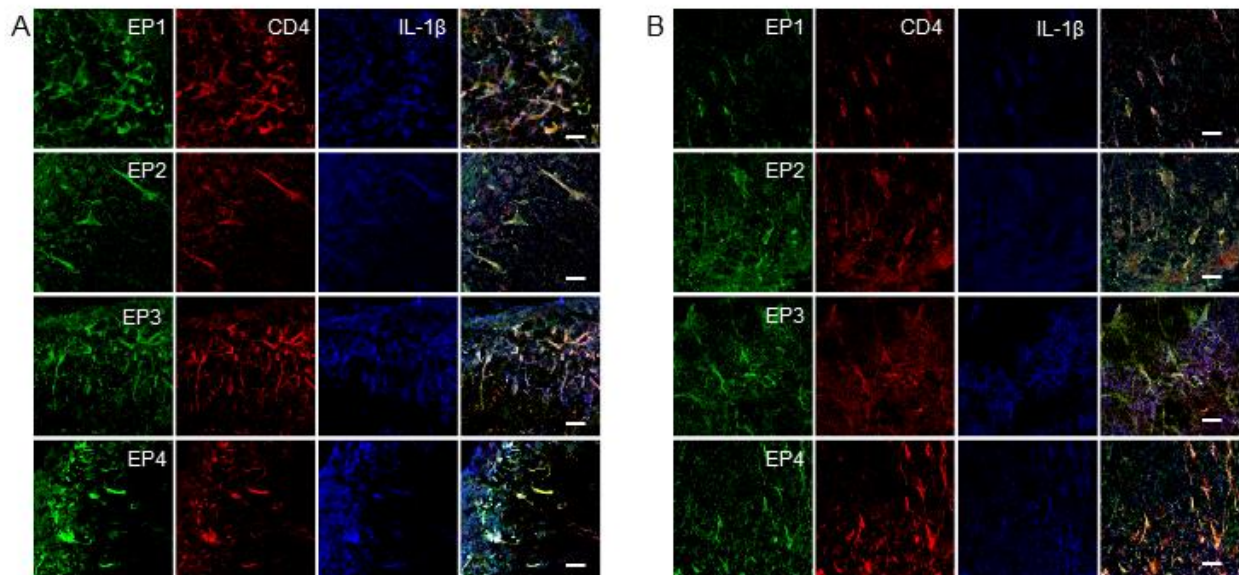
Supplementary Figure 2.

EAE development in wt and *mPGES-1*-deficient (*mPGES-1*^{-/-}) mice. The EAE score gradually increased and maintained a high level in wt mice (open circle) but promptly decreased in *mPGES-1*^{-/-} mice (closed square).



Supplementary Figure 3.

Expression of EP receptors and IL-1 β in CD4⁺ T cells in the control spinal cord. Immunohistochemistry image showing EP 1-4 (green), CD4 (red) and IL-1 β (blue) in the spinal cords of control wt mice (A) and control *mPGES-1*^{-/-} mice (B). Scale bar (50 μ m) for all images.



Supplementary Figure 4.

Expression of EP receptors and IL-1 β in CD4⁺ T cells in the EAE spinal cord. Immunohistochemistry image showing EP 1-4 (green), CD4 (red) and IL-1 β (blue) in the inflammatory region of spinal cords of EAE wt mice (A) and EAE *mPGES-1*^{-/-} mice (B). Scale bar (20 μ m) for all images.

