

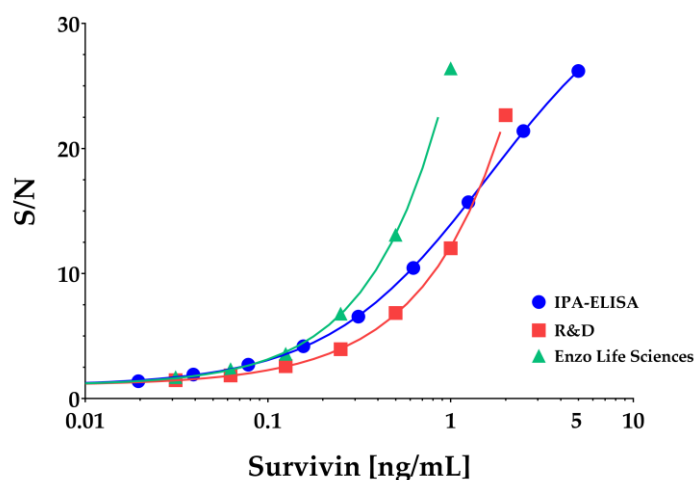


1 Article

2 Evaluation of a new survivin ELISA and UBC[®] Rapid 3 for the detection of bladder cancer in urine

4 Jan Gleichenhagen^{1*}, Christian Arndt², Swaantje Casjens¹, Carmen Meinig¹, Holger Gerullis³,
5 Irina Raiko¹, Thomas Brüning¹, Thorsten Ecke⁴ and Georg Johnen¹

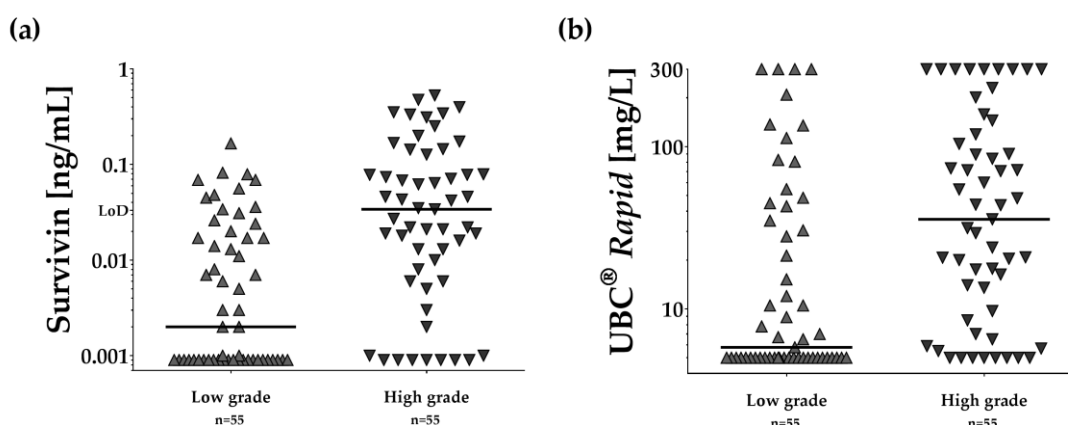
6 Supplementary Materials



7

8 **Supplementary Figure S1.** Comparison of different survivin assays. Obtained OD values from two
9 commercial assays (R&D, ENZO) and the new ELISA (IPA) are plotted as signal to noise ratio (S/N)
10 and interpolated by four-parameter logistic curve fitting.

11



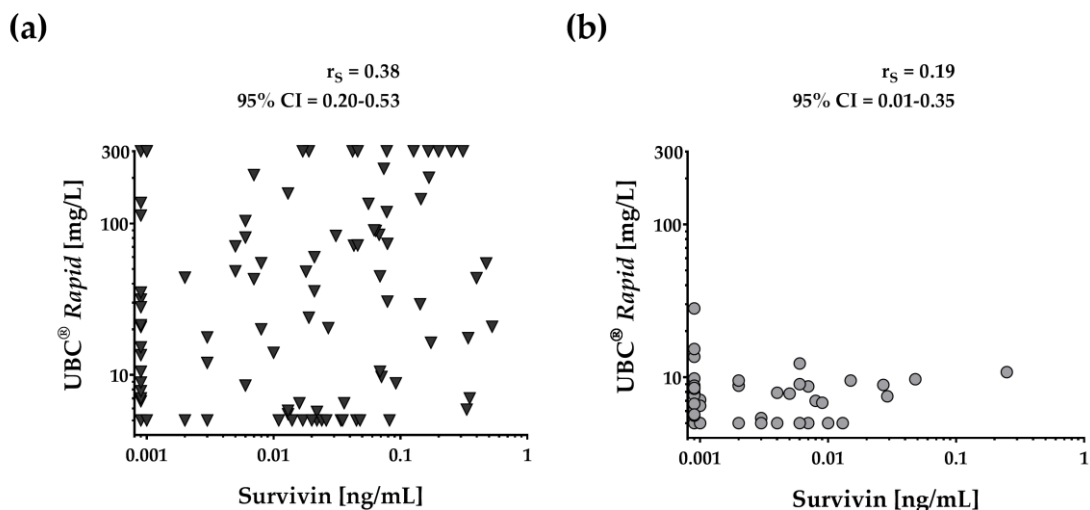
12

13 **Supplementary Figure S2.** Comparison of values for low-grade and high-grade tumors. (a) Survivin
14 and (b) UBC[®] Rapid.

15

16

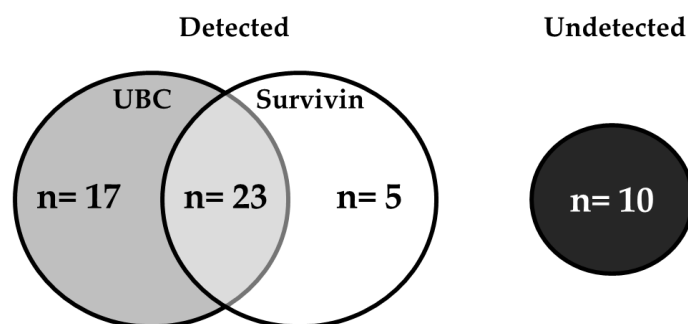
17



18

19 **Supplementary Figure S3.** Scatterplot of UBC® Rapid versus survivin. The plot shows marker
 20 concentrations of the (a) tumor group ($r_s = 0.38$) and (b) clinical control group ($r_s = 0.19$). CI = 95%
 21 confidence interval

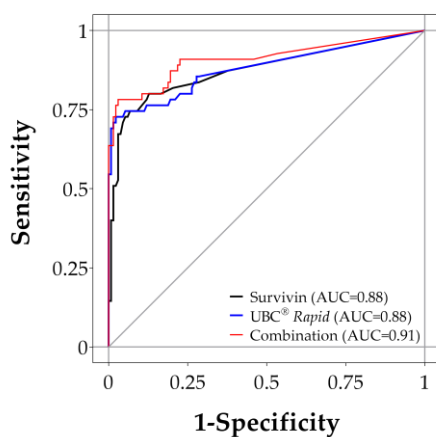
22



23

24 **Supplementary Figure S4.** Venn diagram of high-grade tumors. Detected (left) and undetected
 25 (right) tumor cases by UBC® Rapid (cut-off 10 mg/l) and survivin (cut-off 0.033 ng/ml).

26



27

28 **Supplementary Figure S5.** ROC analyses of high-grade tumors and clinical controls for survivin
 29 (AUC = 0.88), UBC® Rapid (AUC = 0.88), and the combination (AUC = 0.91).