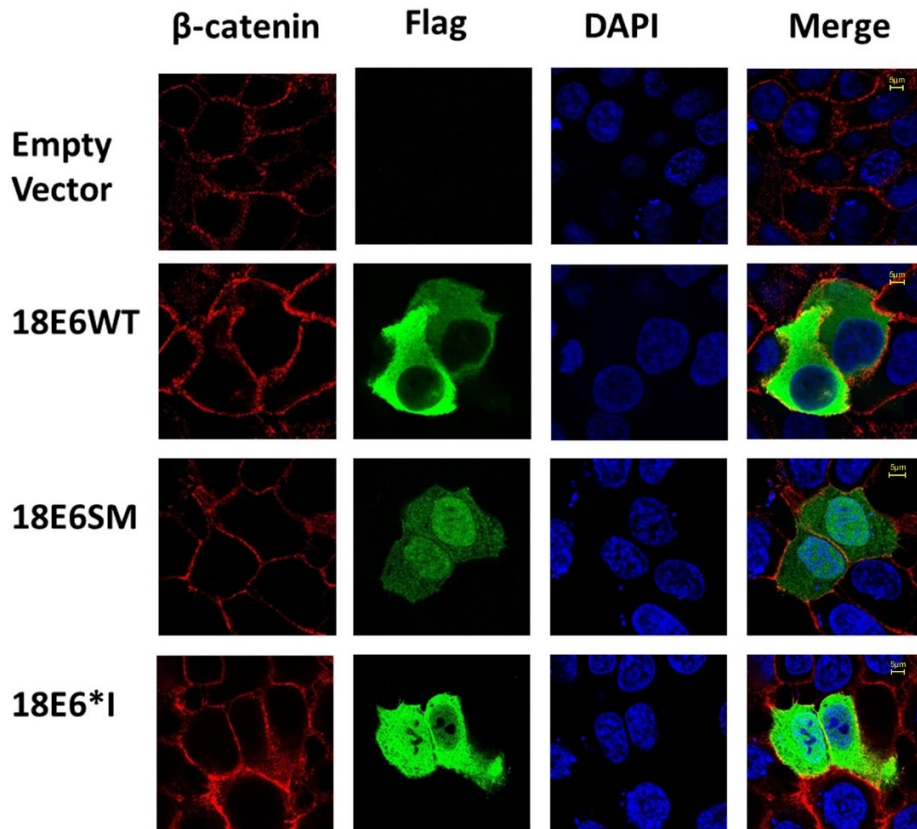


Supplementary Material



**Figure S1.** E6 and E6\*I do not alter  $\beta$ -catenin subcellular distribution in immortalized keratinocytes. HaCaT cells were transfected with E6 expressing plasmids as indicated. 48 hours post-transfection cells were fixed and stained using specific antibodies to detect anti-Flag (Green) and anti- $\beta$ -catenin (Red). Cells were also stained with DAPI (Blue) for nuclei detection. Images were acquired by confocal microscope. Data from three independent experiments were collected with a 63X objective oil immersion lens. Scale bar size 5 $\mu$ m.