

Supplementary Materials

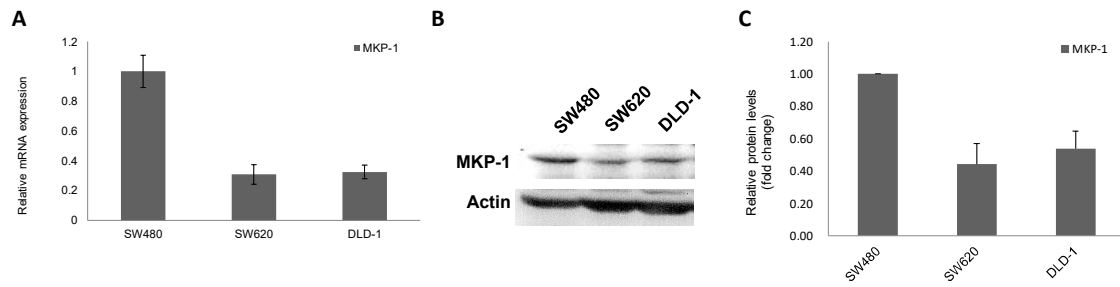


Figure S1. The expression of MKP-1 in colon cancer cells. (A) mRNA expression of MKP-1 were evaluated by real-time PCR. Values (means \pm SD) indicate relative mRNA levels compared to SW480 (=1.0) after normalization to eEF1 α loading control. (B) Representative western blots showing expression of MKP-1 in SW480, SW620 and DLD-1 cells, with actin as loading control. (C) Quantitative analysis of the relative protein expression of MKP-1. Values (means + SD) are normalized to actin loading and are relative to SW480 levels (=1.0).

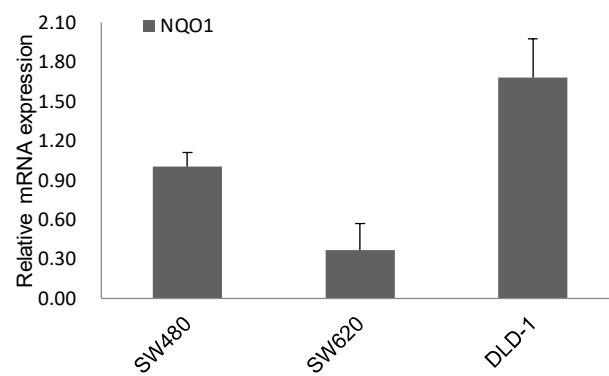


Figure S2. The mRNA expression of NQO1 in colon cancer cells. mRNA expression of NQO1 were evaluated by real-time PCR. Values (means + SD) indicate relative mRNA levels compared to SW480 (=1.0) after normalization to eEF1 α loading control.