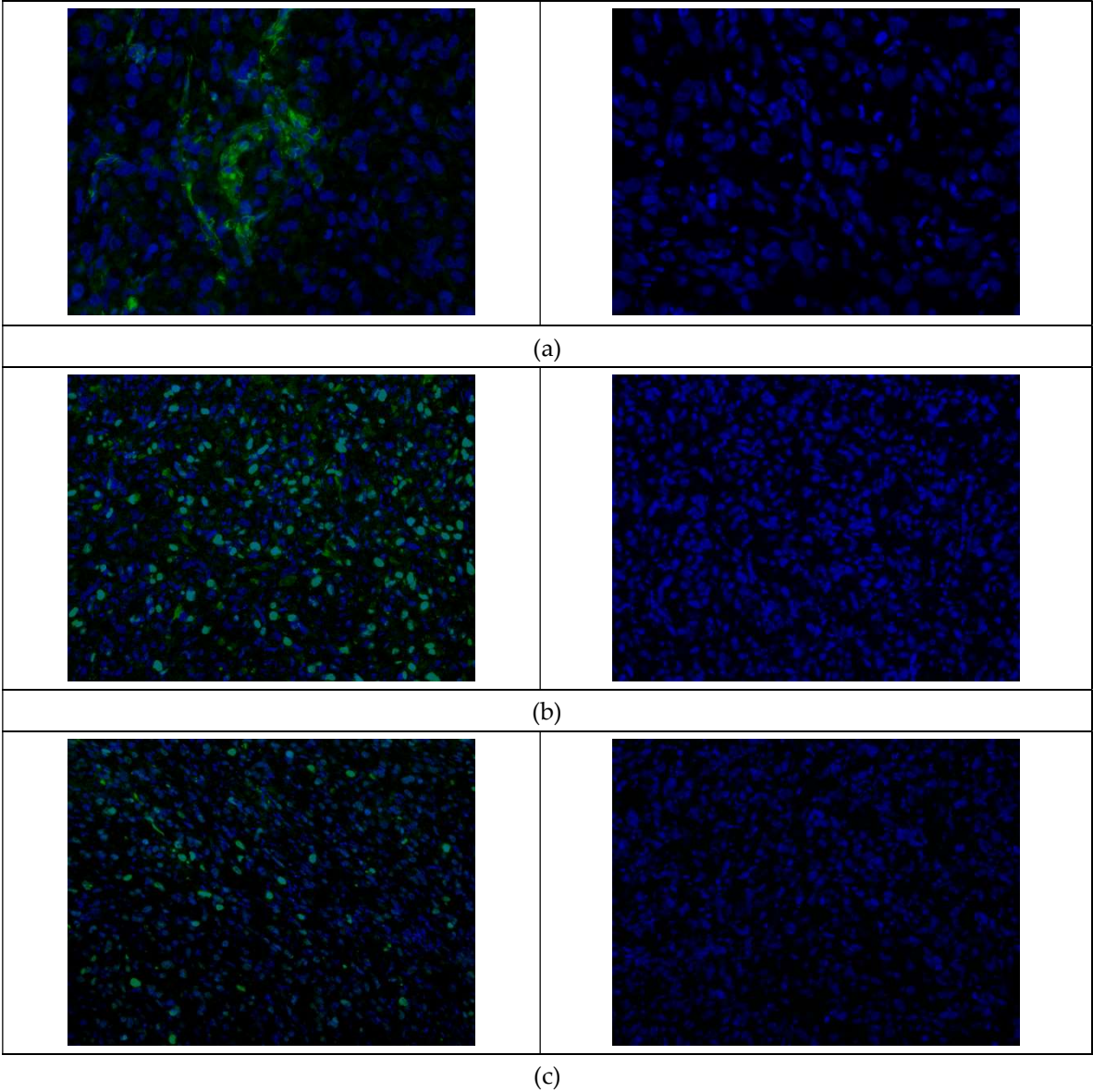


Supplementary figure



Supplementary figure. Staining of consecutive H2052/484 tumor sections performed with 1st and 2nd antibodies (left; positive control) or without the 1st antibody (right; negative control) **(a)** anti-CD31 (vascularization), **(b)** anti-Ki67 (cell proliferation), and **(c)** anti- γ -H2AX (DNA damage and cell apoptosis).