

Supplementary Material

Platinum complexes can bind to telomeres by coordination

Lina Saker^{1,2}, Samar Ali^{1,3}, Caroline Masserot^{1,3}, Guillaume Kellermann^{1,2}, Joel Poupon⁴, Marie-Paule Teulade-Fichou^{3,5,6,7}, Evelyne Ségal-Bendirdjian^{1,2,3*} and Sophie Bombard^{1,2,3,5,6,7*}

¹ INSERM UMR-S 1007, Cellular Homeostasis and Cancer, Paris, France.

² Paris Descartes University, Paris Sorbonne Cité, Paris, France.

³ Paris Sud University, Paris-Saclay University, Orsay, France.

⁴ Laboratoire de Toxicologie-Biologique, Hôpital Lariboisière, 2 rue Ambroise Paré, 75475 Paris, France

⁵ Institut Curie-Recherche, Bât. 112, centre Universitaire, 91405 Orsay, France

⁶ CNRS UMR918, Centre Universitaire, 91405 Orsay, France

⁷ INSERM U1196, Centre Universitaire, 91405 Orsay, France

* Correspondence: sophie.bombard@curie.fr; Tel.: +33 1 6986 3189 and evelyne.segal-bendirdjian@inserm.fr

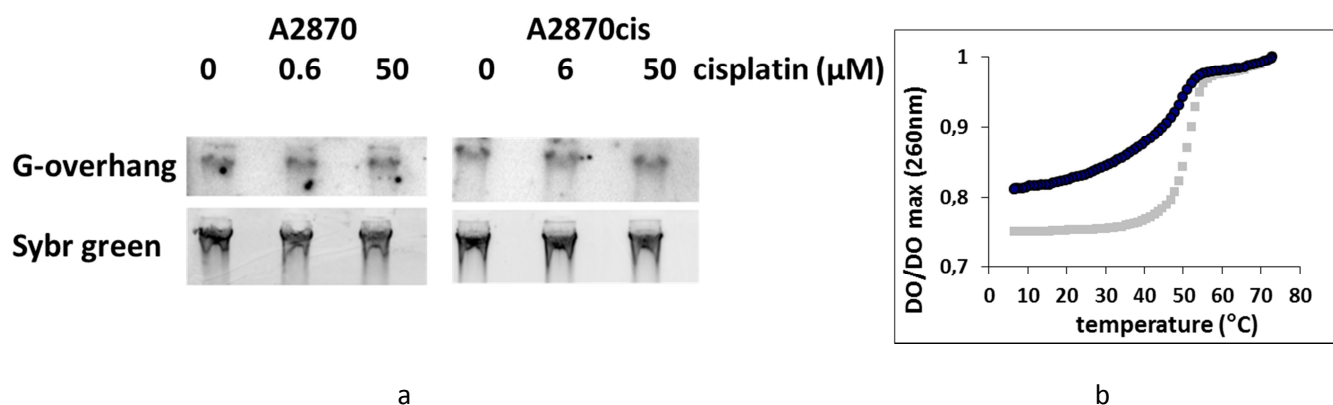


Figure S1: Integrity of the 3'G-overhang and effect of a cisplatin GG adduct on its hybridization efficiency with the C-rich telomeric sequence. a) Telomeric single-stranded overhang signal hybridized with a the ^{32}P radiolabelled $(\text{CCCTTA})_4$ and the corresponding Sybr green signal for DNA quantification of A2870 and A2870cis cells treated with cisplatin at different concentrations for 96 or 8h. b) Melting temperature of $(\text{TTAGGG})_4/(\text{CCCTTA})_4$ duplex bearing (blue circle) or not (grey square) a cisplatin GG adduct in 50mM NaCl.