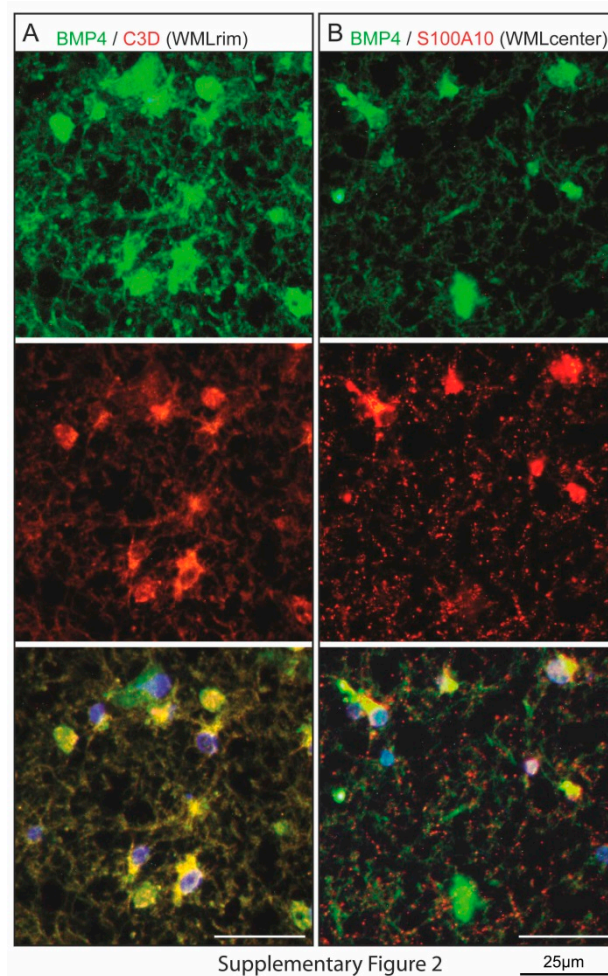


**Figure S1.** T-cellular infiltration in active MS-lesions. A comparison of the CD3 cell counts with the CD8 cell counts in the active lesions (biopsy MS-tissue) shows that generally more than 50% of the T-cells are positive for CD8. Since no satisfactory staining result could be achieved with the marker for CD3-T-cells in the investigated autopsy tissue (possibly for technical reasons), the well-functioning marker for CD8-T-cells was used for the characterization of the inflammatory infiltrate in this paper.



**Figure S2.** Chronic white matter lesions (WML) with astrocytes expressing BMP4. BMP4 expression in the astrocytic subtypes A1 and A2 described in the literature [17] was examined by immunohistochemical double staining. BMP4 (A, B, green) expression was detected in A1 astrocytes (A, C3D, red) and A2 astrocytes (B, S100A10, red); scale bar = 25µm.