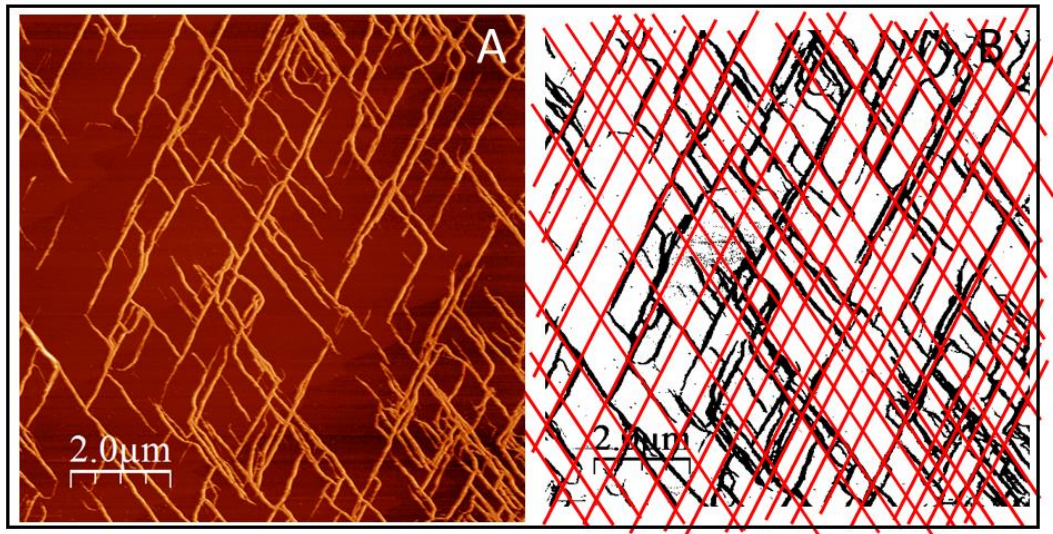


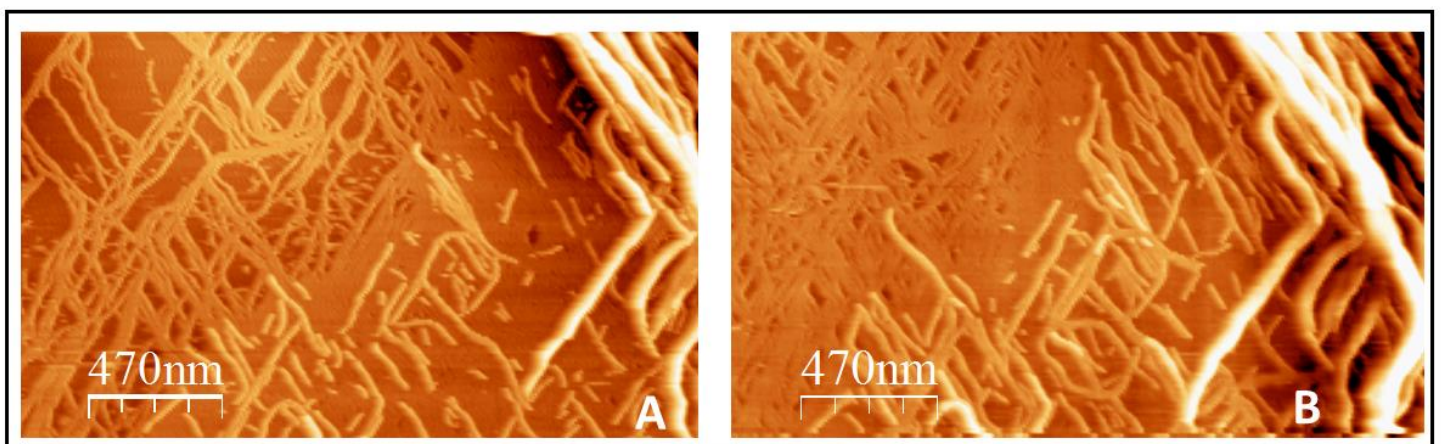
SUPPLEMENTARY INFORMATION

Surface orientation and binding strength modulate shape of FtsZ on lipid surfaces

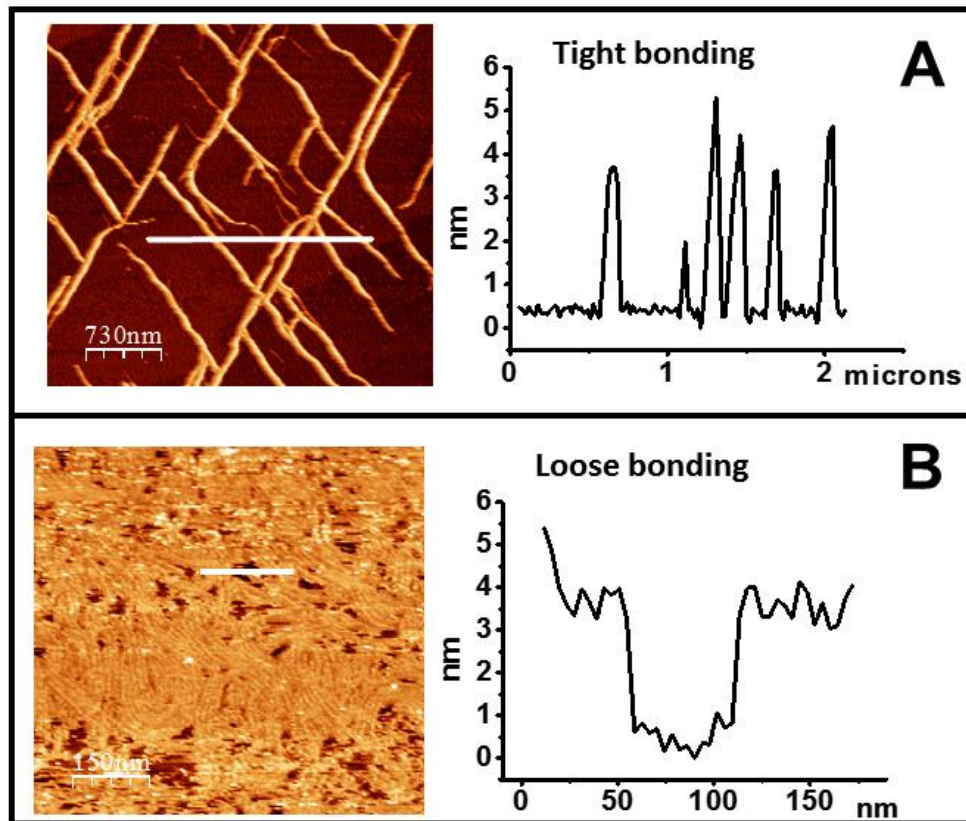
Ileana Márquez, Gabriel Díaz-Haro, Marisela Vélez*



S1 Panel A shows filaments grown on the bilayer. At the micrometer range the filaments are aligned preferentially at 60 degree angles. Panel B show the filaments under a superimposed reticle of lines oriented at 60 degrees.



S2 Image B was taken 11 minutes after A. The formation of a dense layer of filaments followed by increase growth in three dimensions of a second and third filament layer is observed, before the formation of thicker less defined bundles.



S3 Height of the observed filaments under the two attachments. The observed 4 nm correspond to the height expected for individual filaments.