

Figure S1 Expression of PKC- δ -like in the supraneural body and leukocytes of *L. japonica*. Lane 1 is the cell lysate of the supraneural body; lane 2 is the cell lysate of the leukocytes.

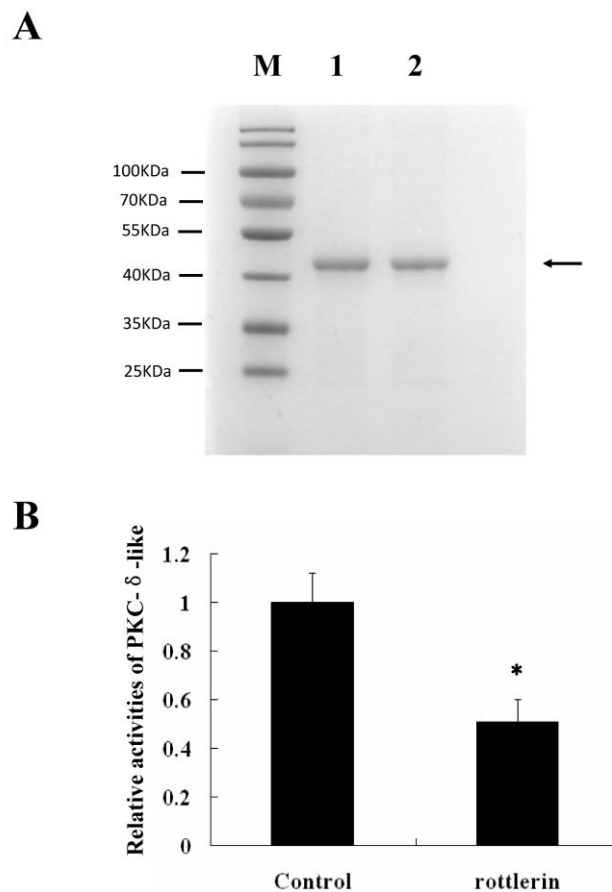


Figure S2 Activity assay of PKC- δ -like-CF treated without or with rottlerin in vitro. (A) Expression and purification of PKC- δ -like-CF recombinant protein. The recombinant proteins were expressed in *E. coli* *BL21* and analyzed through SDS-PAGE. M, protein marker; lane 1 and lane 2, purified PKC- δ -like-CF recombinant protein. (B) Activity assay of PKC- δ -like-CF treated without or with rottlerin (10 μ mol/L). The asterisk indicates $p < 0.05$.

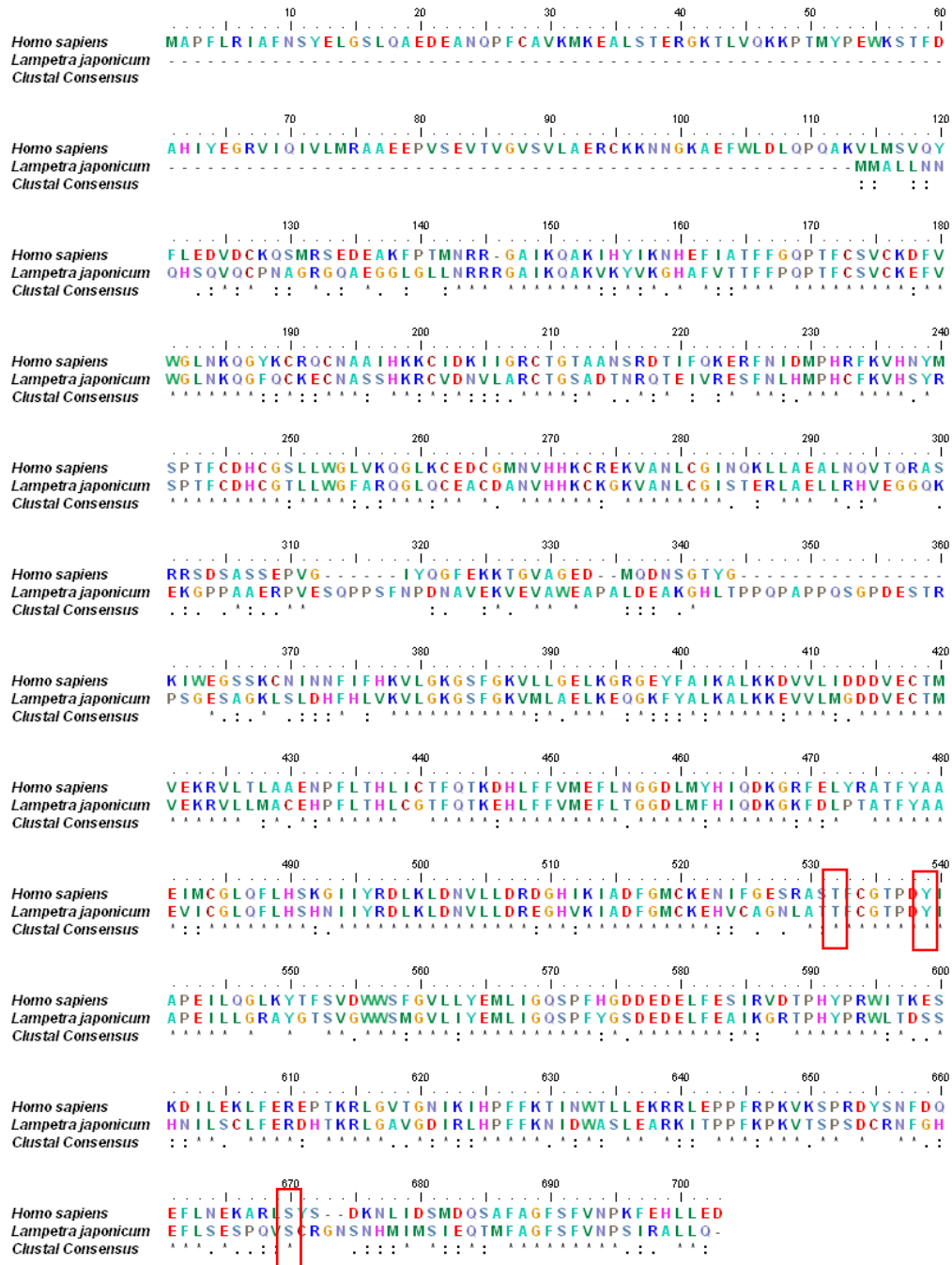


Figure S3 Sequence alignment of PKC- δ -like with human PKC- δ . The following accession numbers of the amino acid sequences were extracted from the NCBI protein database: *Homo sapiens*: NP_006245; *Lampetra japonicum*: KX943554. The red boxes marked the active sites.