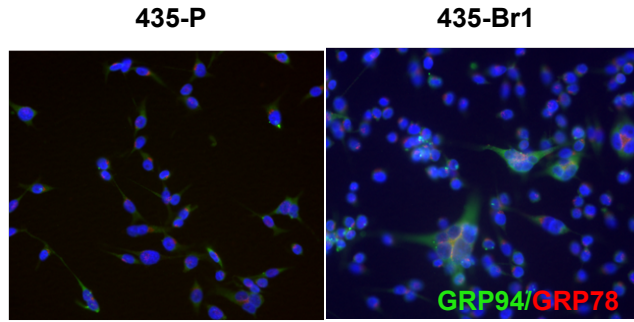


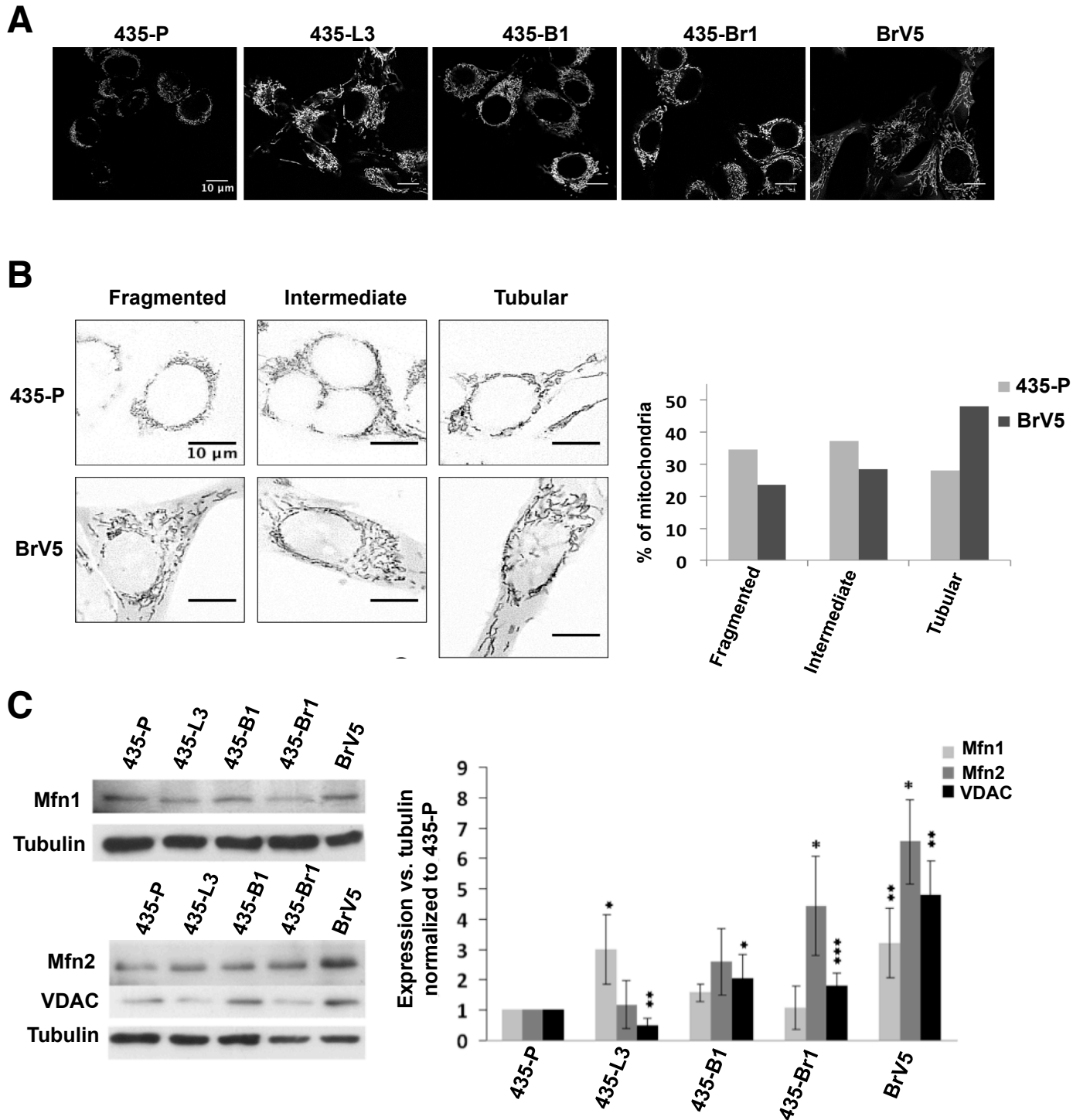
**Santana-Codina et al, SUPPLEMENTARY FIGURES**

# Supplementary Figure 1



**Supplementary Figure 1. Characterization of breast cancer metastatic variants.** Immunofluorescence analysis of GRP94 expression (green) and GRP78 (red) in 435-P and 435-Br1 cells. DAPI was used for nucleus visualization.

## Supplementary Figure 2



**Supplementary Figure 2. Mitochondrial morphology features in metastatic variants.** (a) Confocal microscopy of metastatic variants stained with Mitotracker green (63X, 1 representative of 2). (b) Elongation was calculated as the inverse of circularity and cells were classified in three subtypes according to mitochondrial elongation: fragmented, intermediate and tubular (85 cells analyzed per group, 1 experiment representative of 2). (c) Immunoblotting of Mfn1, Mfn2 and VDAC (left). Expression was quantified to tubulin and normalized to 435-P cells. Error bars represent s.e.m. of 4 independent experiments.