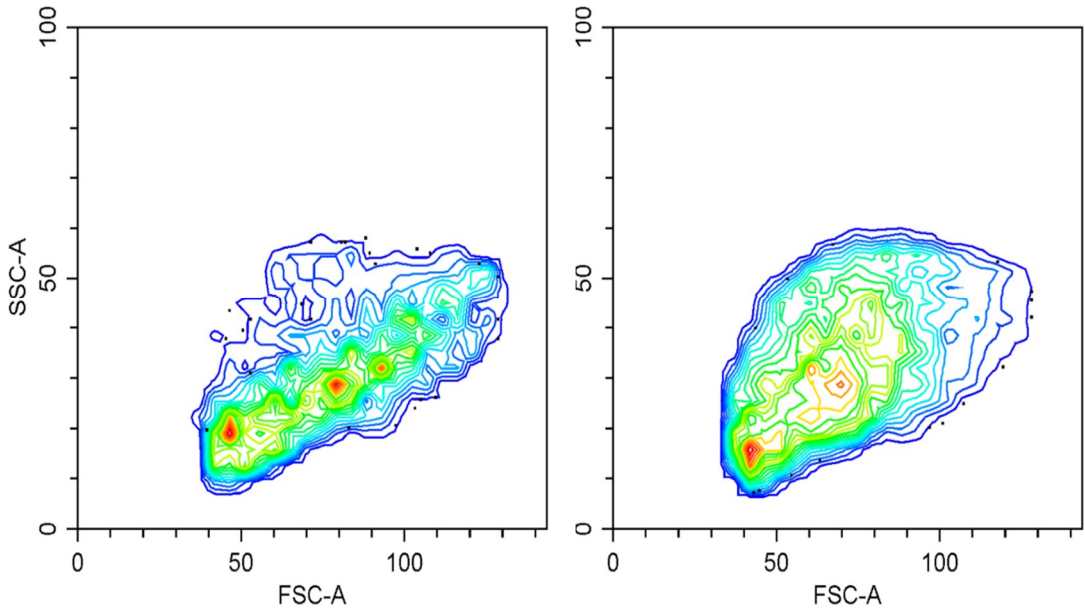
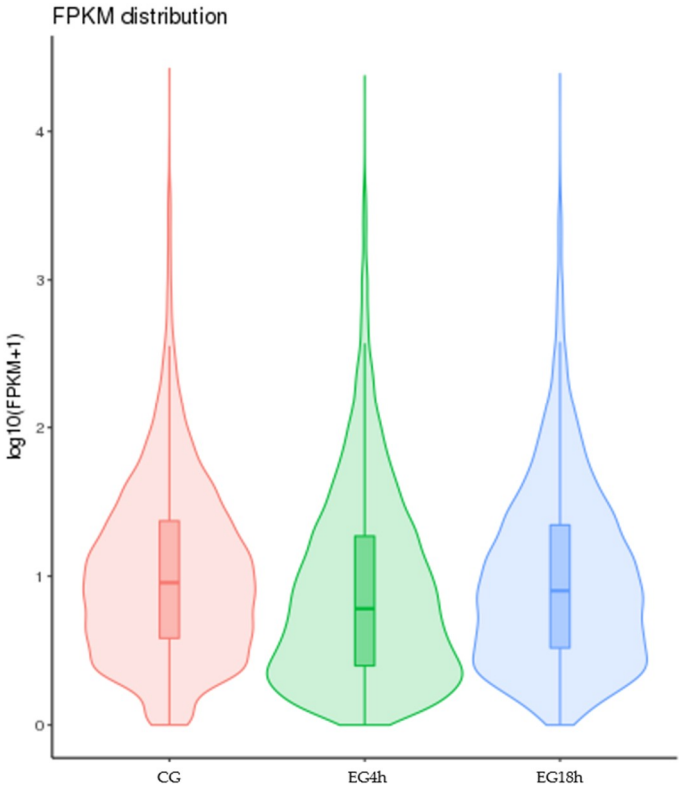


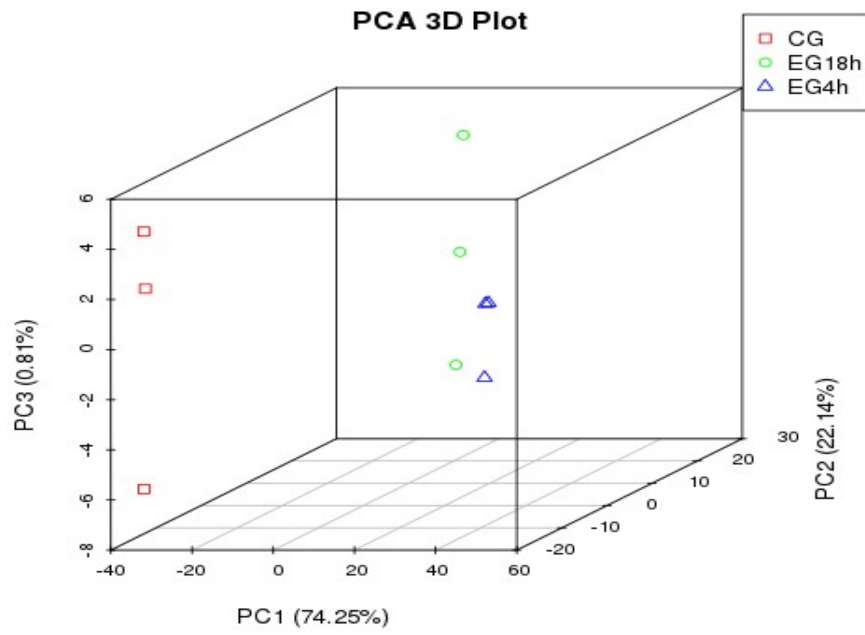
Supplementary Figures



Supplementary Figure S1 | Flow cytometry forward/side scatter profile of cultured cells before (left panel) and after enrichment (right panel). Data are representative of three independent experiments. Typical purity after enrichment was more than 80%.



Supplementary Figure S2 | FPKM density distribution. The $\log_{10}(\text{FPKM}+1)$ is used for the Y axis and the sample name is used for the X axis. Volin plots show the lowest and highest values in the distribution, the median, and the lower quartile and the upper quartile of a given set of data. Each group contains three independent samples.



Supplementary Figure S3 | Principal Component Analysis (PCA) of the transcriptome expressed in CG, EG4h and EG18h. PCA was carried on all genes under investigation to determine the expression trends within the data set.