



Supplementary materials:

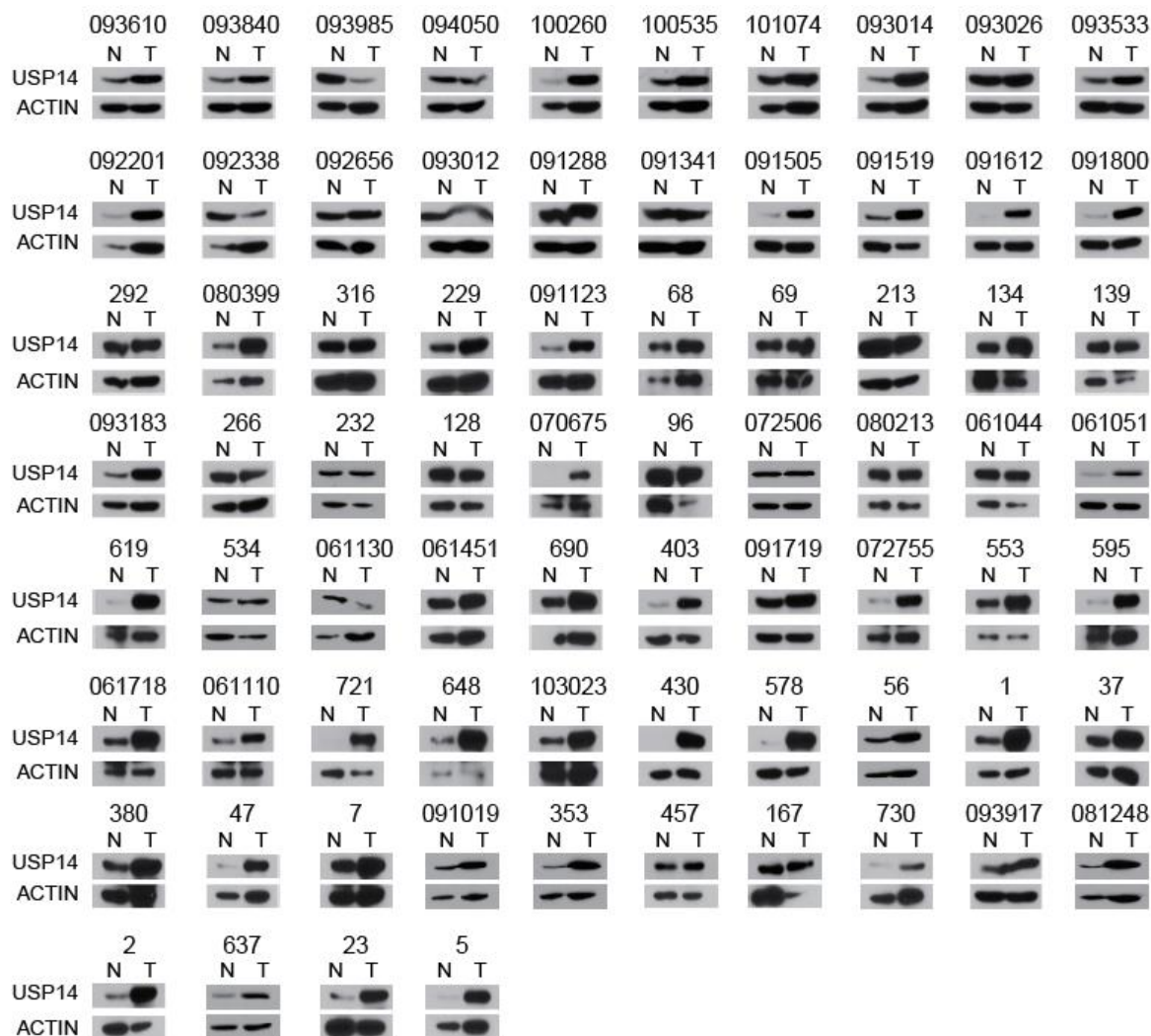


Figure S1. USP14 protein levels in 74 paired lung cancer tissues and non-tumor tissues. (N = normal lung tissue, T = lung cancer tissue).

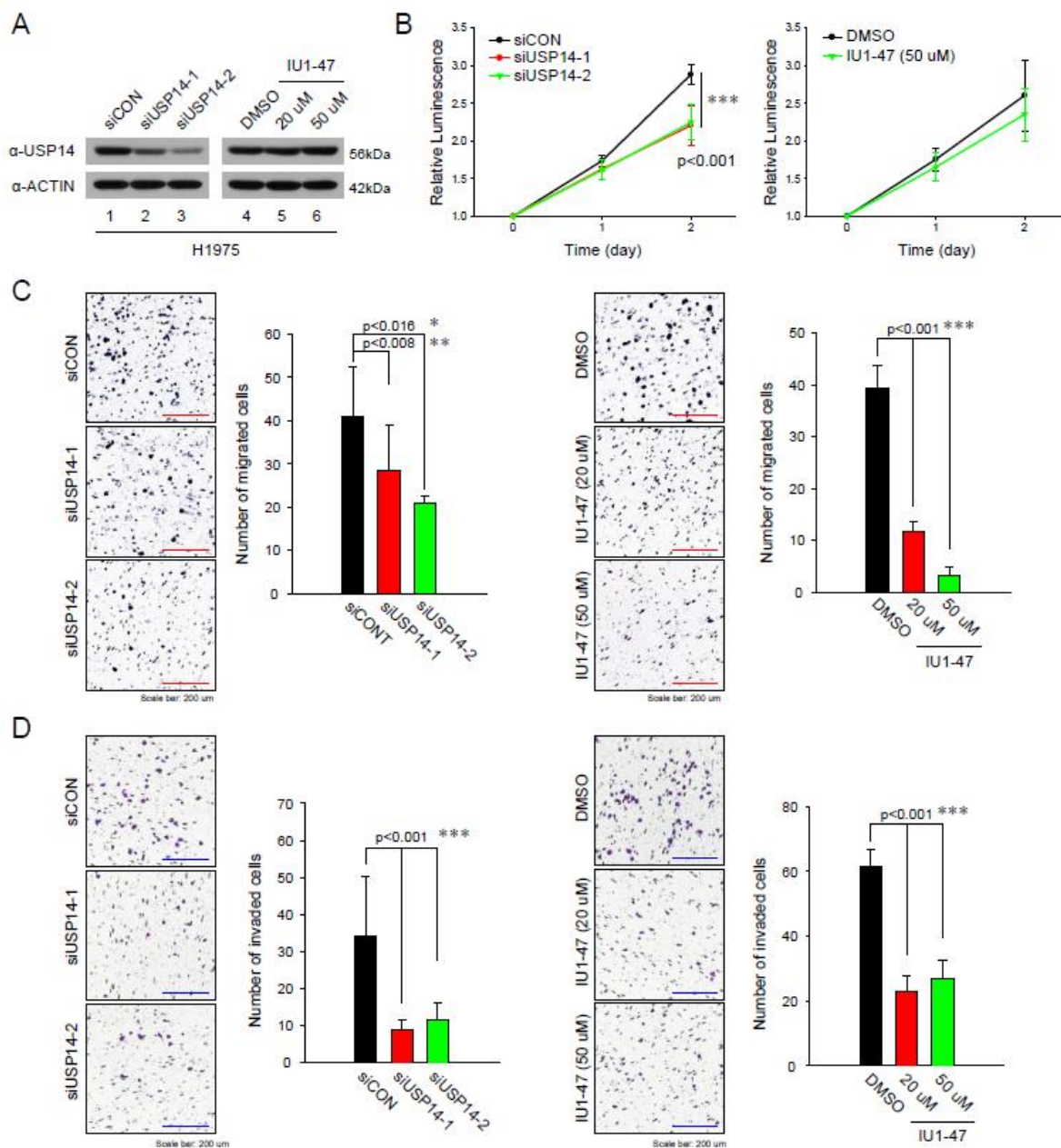


Figure S2. USP14 inhibition using siRNA and IU1-47 in H1975 lung cancer cells. (A) Immunoblot analysis for USP14 using siRNA and IU1-47 in H1975 cells. (B) Effects of USP14 knockdown or inhibition on the cell viability of H1975 ($n = 5$). Effects of USP14 knockdown or inhibition on cell migration (C) or invasion (D). Values are the mean \pm SD of the number of invaded cells ($n = 5$). Scale bar = 200 μ m.

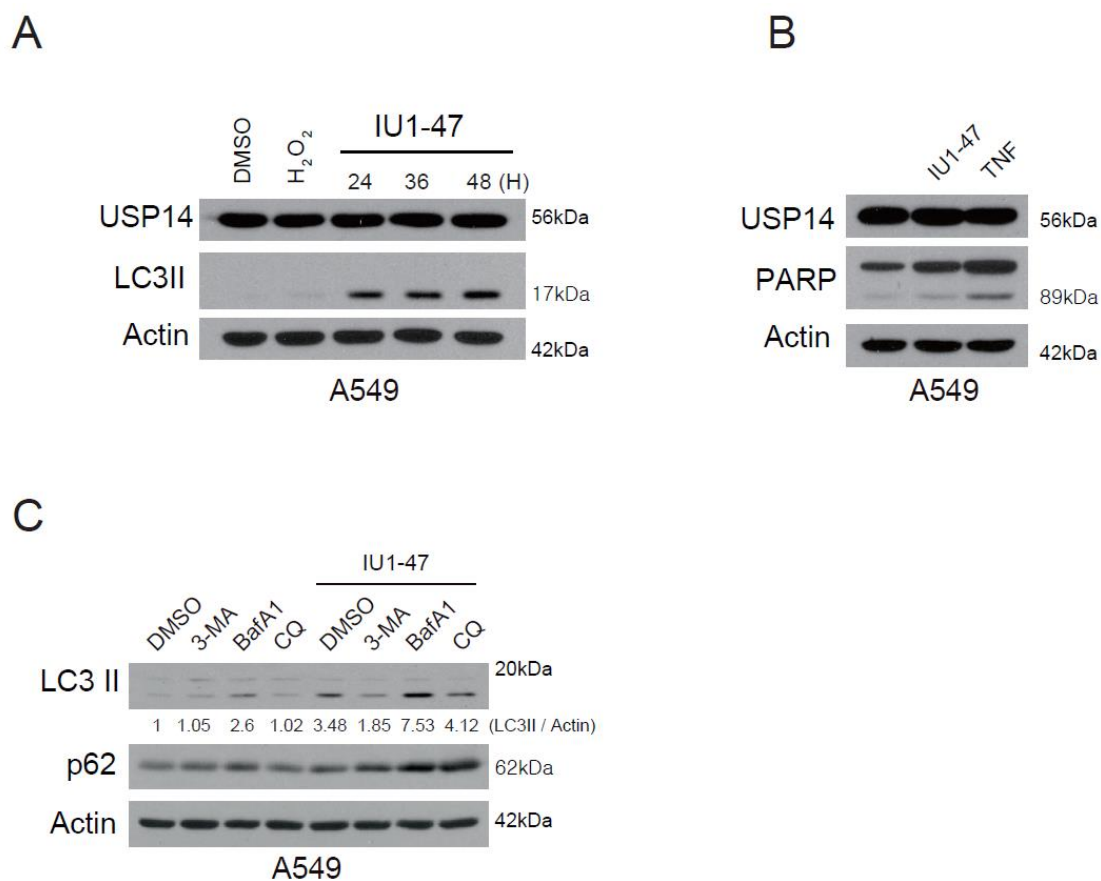


Figure S3. USP14 inhibition induces LC3 autophagy protein. (A–B) A549 cells were treated with TNF, H₂O₂ or USP14 inhibitor (IU1-47) and lysed and immunoblotted with anti-USP14, autophagy proteins (LC3 I, II), apoptotic cell death associated protein (PARP) and β -actin antibodies. (C) A549 cells were treated with DMSO, 3-Methyladenine (3-MA), Bafilomycin A1 (BafA1), chloroquine (CQ) or USP14 inhibitor (IU1-47) and lysed and immunoblotted with anti-autophagy proteins (LC3 I, II), p62 and β -actin antibodies.