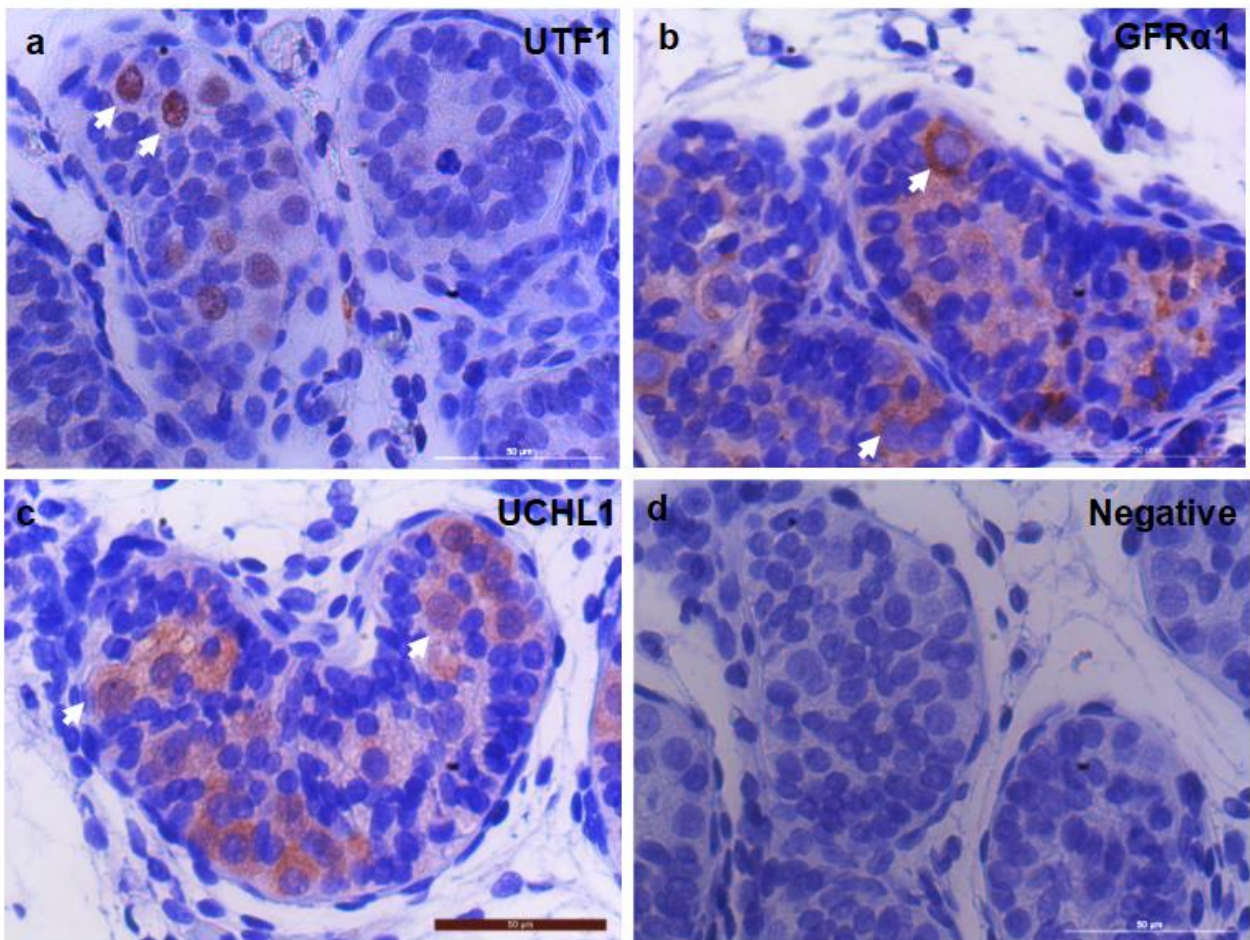


## Supplemental data



Supplemental figure S1 Immunohistochemical staining analysis of undescended testis (0.8 years old). a: undifferentiated embryonic cell transcription factor 1 (UTF1), b: GDNF family receptor alpha-1 (GFR $\alpha$ 1), c: ubiquitin carboxyl-terminal hydrolase isozyme L1 (UCHL1). Arrows show germ cells with positive signals, d: IgG negative control. Scale bars: 50  $\mu$ m.