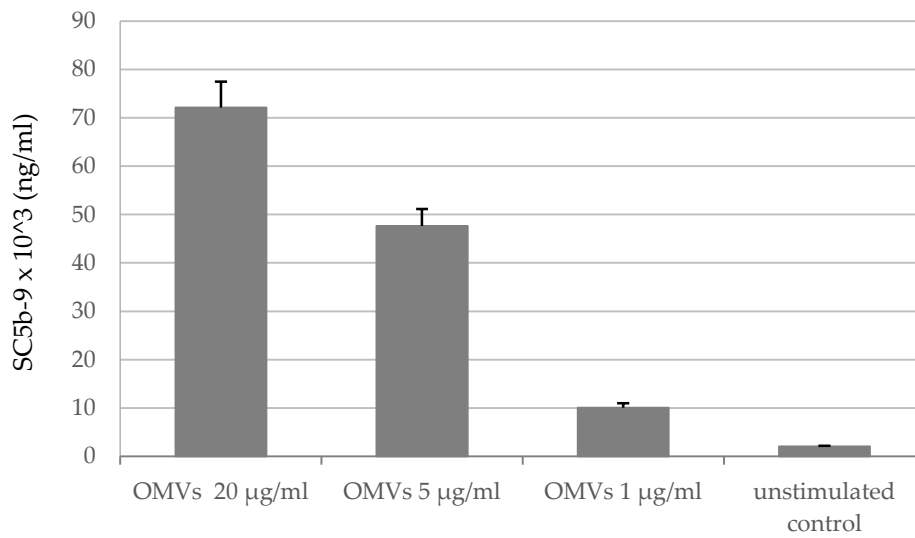


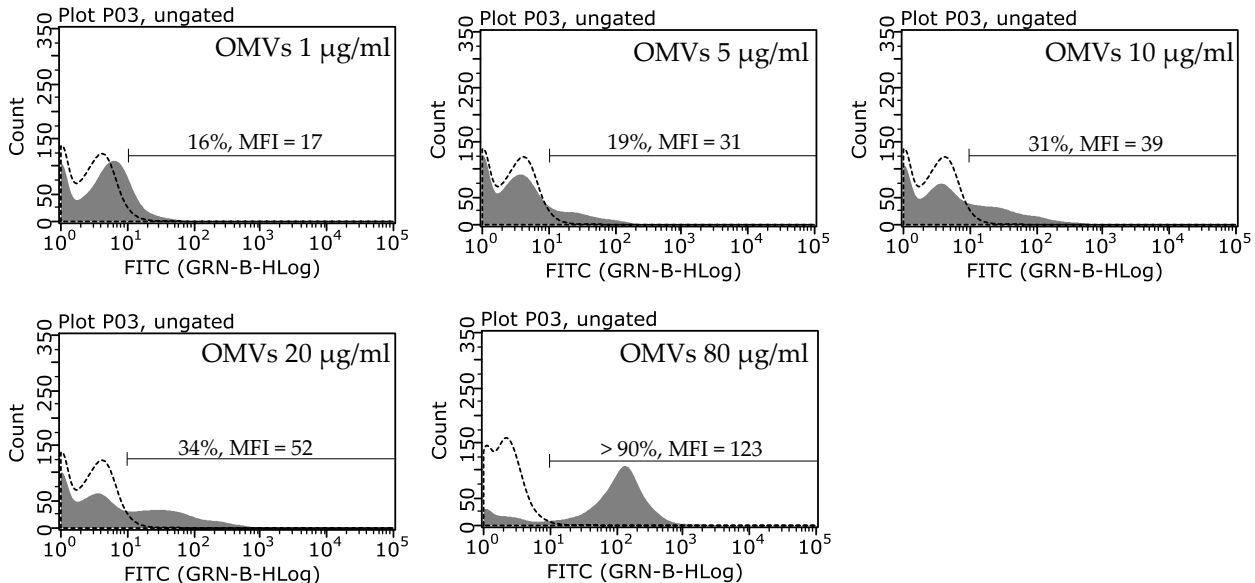
Fig. S1



**Figure S1.** Human serum complement system activation by OMVs. The activation of the soluble non-proteolytic membrane attack complex (SC5b-9) was determined by ELISA. Before ELISA the OMVs (1-20 μg/ml) in veronal-buffer saline containing 0.15 mM Ca<sup>2+</sup> and 0.5 mM Mg<sup>2+</sup>, pH 7.4 were incubated with active human serum from healthy volunteers at a volume ratio of 1:9 at 37°C for 30 min with gentle agitation. Data are expressed as the mean ± SD of three independent experiments performed in duplicates. Statistics was performed by Kruskal-Wallis ANOVA, \**p* < 0.001 compared to unstimulated control.

# Fig. S2

## *M. catarrhalis* 6



**Figure S2.** Flow cytometry analysis of FITC-labelled OMVs Mc6 associated with *M. catarrhalis* 6 in concentration-dependent manner. The fluorescence intensities of OMV-associated bacteria are shown as black histograms whereas control bacteria as dotted histograms. Quantification of bacteria associated with FITC-labelled OMVs is expressed as an events percentage and as mean fluorescent intensity (MFI).