

**Table S1.** Correlation between mRNA Expression and DNA Methylation of *CTNNBIP1* gene in Lung Cancer Patients <sup>a</sup>.

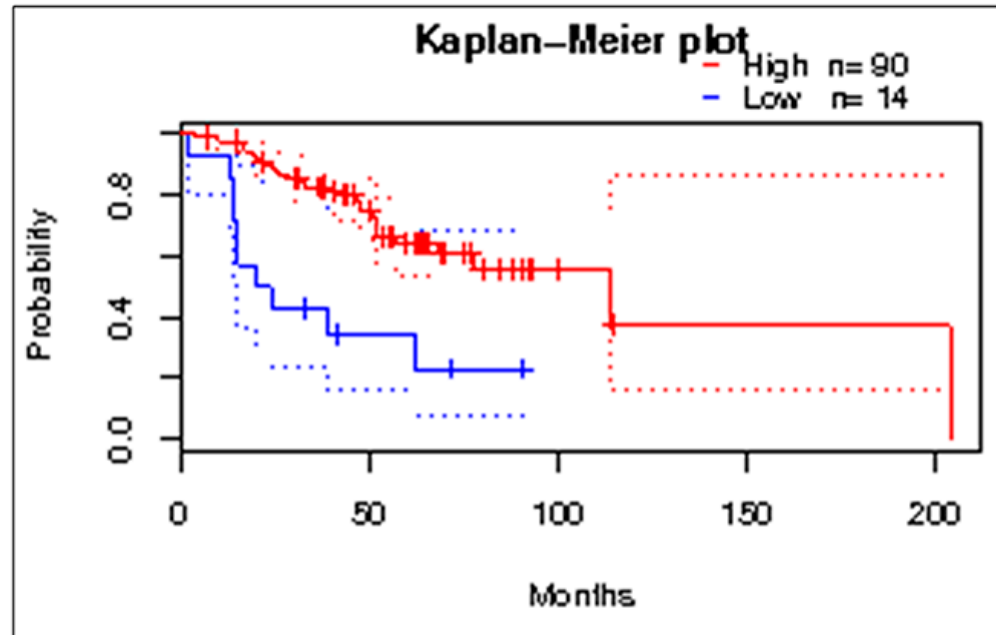
Characteristics	CTNNBIP1 mRNA <sup>b</sup>					
	Total	- (%)	+	<i>p</i> value <sup>d</sup>		
Overall	121	61 (50.4)	60			
CTNNBIP1 methylation probes (region) <sup>c</sup>	cg02833588 (5'UTR)	U	62	16 (25.8)	46	<0.001
		M	59	45 (76.3)	14	
	cg17953816 (5'UTR)	U	67	28 (41.8)	39	0.035
		M	54	33 (61.1)	21	
	cg24086140 (5'UTR)	U	65	23 (35.4)	42	<0.001
		M	56	38 (67.9)	18	

<sup>a</sup> These results were analyzed in data from the lung cancer patients of the publicly available data in GSE66836 and GSE66863 projects by the GEO database. <sup>b</sup> CTNNBIP1 mRNA value < mean indicates “-”. <sup>c</sup> CTNNBIP1 methylation probes value > mean+1SD indicates “M”. M, hypermethylation; U, unmethylation. <sup>d</sup> The *p* value for each analysis is provided by  $\chi^2$  analysis.

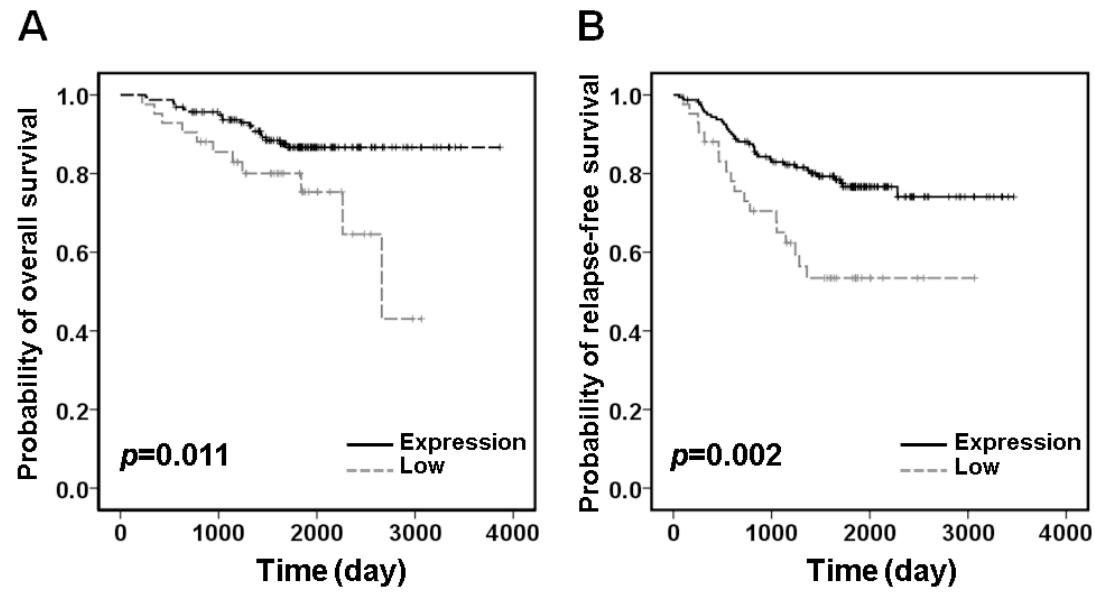
**Table S2.** List of primer sequences used in the present study.

Gene	Primer	5' 3' Sequences	PCR Size (bp)	T <sub>m</sub> (°C)	Cycle Number
<i>CTNNBIP1</i>	Forward	GAGCACCTGTTTGCCTGAAG	321	60	35
	Reverse	GCCCTTCAACAGCATCCAGG			
<i>MMP7</i>	Forward	TACAGTGGGAACAGGCTCAGG	199	62	35
	Reverse	GGCACTCCACATCTGGGCT			
<i>cyclin D1</i>	Forward	ATGTGTGCAGAAGGAGGTCC	199	60	35
	Reverse	CTTAGAGGCCACGAACATGC			
<i>c-MYC</i>	Forward	TGAAAGGCTCTCCTTGCAGC	175	60	35
	Reverse	GCTGGTAGAAGTTCTCCTCC			
<i>GAPDH</i>	Forward	AATCCCATCACCATCTTCCA	588	55	30
	Reverse	CCTGCTTCACCACCTTCTTG			
<i>β-actin</i>	Forward	GGCGGCACCACCATGTACCCT	180	60	35
	Reverse	AGG GGCCGGACTCGTCATACT			
<i>CTNNBIP1</i> -methyl-M	Forward	GTTTAACGACGTAGGAAGATTACGT	129	55	35
	Reverse	ATTTAAAAACGAAAACAACAAAACG			
<i>CTNNBIP1</i> -methyl-U	Forward	AGTTTAATGATGTAGGAAGATTATG	125	55	35

**Dataset: jacob-00182-MSK**  
**Gene: CTNNBIP1**  
**Patients Number: 104**  
**Overall survival  $p$  value: <0.001**



**Figure S1.** The relationship between the expression of CTNNBIP1 and patient prognosis of lung cancer patients in jacob-00182-MSK project.



Dataset: GSE31210  
Gene: CTNNBIP1  
Patients Number: 204

Figure S2. Low CTNNBIP1 expression correlates with poor survival of lung cancer patients in GSE31210 project.